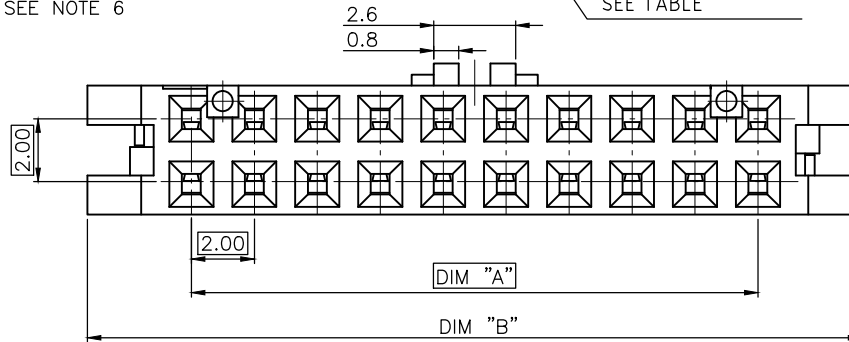
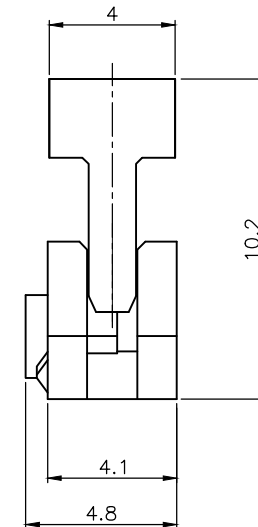
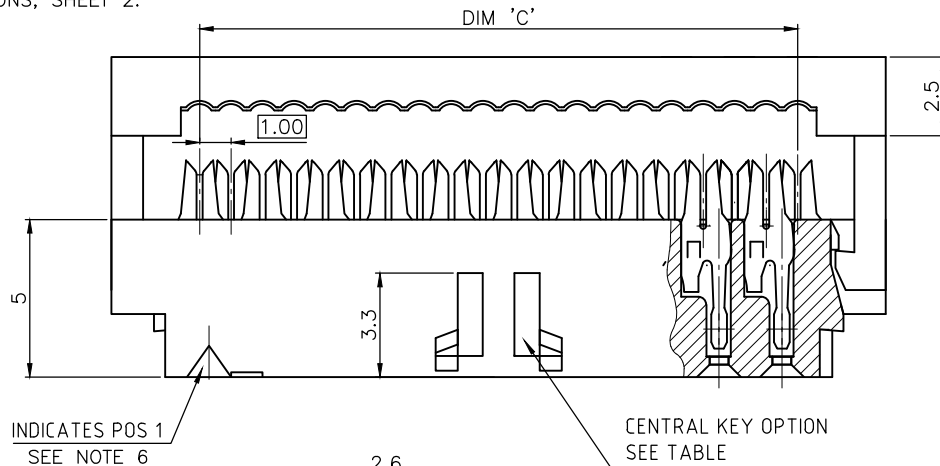


PRODUCT NUMBER

89361-YXXSLF

- LEAD FREE, RoHS COMPLIANT
SEE NOTE 4
- STRAIN RELIEF OPTION, NOTE 5.
- TOTAL NB OF POSITIONS, SHEET 2.
- FEATURES, SHEET 2.



VIEW WITHOUT COVER



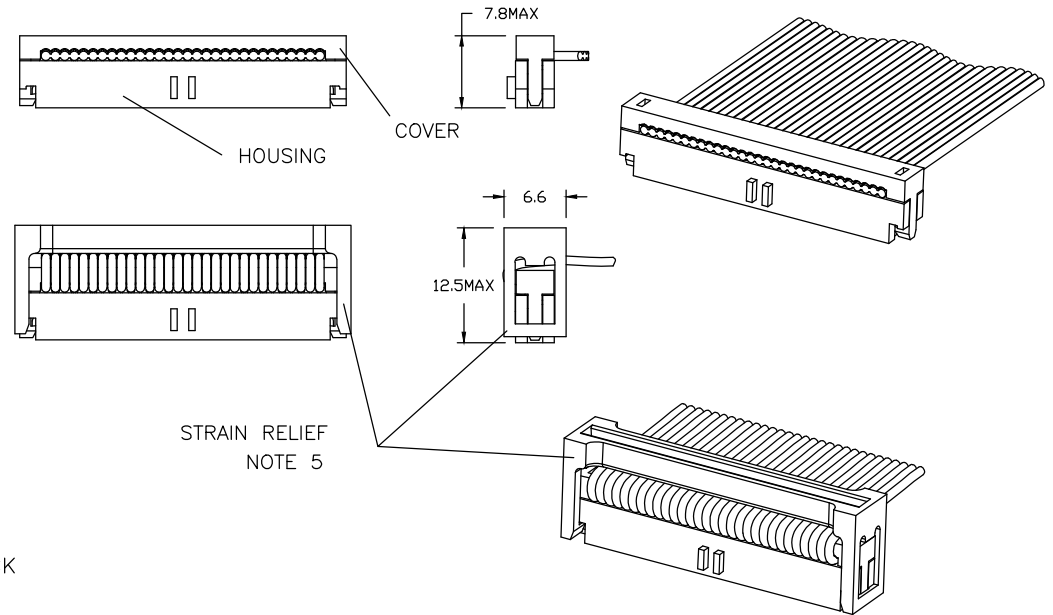
Copyright FCI

mat'l. code SEE NOTE		surface ISO 1302 <input checked="" type="checkbox"/> ISO 406 ISO 1101		projection 	product family MINITEK	
ltr	ecn no	dr	date	tolerances unless otherwise specified		title
K	F06-0211	LMU	06.07.03	angles	.0±.3	2.00mm IDC 0.2µm Au
L	F07-0215	LMU	07.06.12	linear	.00±.13	
M	F08-0218	JCO	08.09.09	0°±x'	.000±.05	scale 1:1
N	F09-0081	JCO	09.08.27	dr	L.MULIN	07.03.20
P	F-21434	BVE	15.07.16	engr	J.COMPAGNON	07.03.20
				chr		
				appd	JM.C	07.03.20
sheet index	revision sheet	P	P			
		1	2			



dwg no 89361 sheet 1 of 2 size A3
type Product Customer Drawing

PRODUCT SIZE	TOTAL NB OF POS	DIM "A"	DIM "B"	DIM "C"	STRAIN RELIEF OPTION
89361-X06LF	2x3	4	10.6	5	YES
-X08LF	2x4	6	12.6	7	YES
-X10LF	2x5	8	14.6	9	YES
-X12LF	2x6	10	16.6	11	YES
-X14LF	2x7	12	18.6	13	YES
-X16LF	2x8	14	20.6	15	YES
-X18LF	2x9	16	22.6	17	YES
-X20LF	2x10	18	24.6	19	YES
-X22LF	2x11	20	26.6	21	NOT TOOLED
-X24LF	2x12	22	28.6	23	YES
-X26LF	2x13	24	30.6	25	YES
-X28LF	2x14	26	32.6	27	NOT TOOLED
-X30LF	2x15	28	34.6	29	YES
-X34LF	2x17	32	38.6	33	YES
-X36LF	2x18	34	40.6	35	NOT TOOLED
-X40LF	2x20	38	44.6	39	YES
-X44LF	2x22	42	48.6	43	YES
-X48LF	2x24	46	52.6	47	YES
-X50LF	2x25	48	54.6	49	YES



NOTES :

- MATERIAL : TERMINAL PHOSPHORE BRONZE
BASE AND COVER : PBT GLASSFILLED UL 94V-0 BLACK
- PLATING : GOLD 0.2µm Au MIN ON CONTACT AREA
NICKEL 1.27µm MIN UNDERPLATING ALL OVER
- RECOMMENDED CABLE SIZE : AWG28, STRANDED
- THIS PRODUCT MEETS EUROPEAN UNION DIRECTIVES AND OTHER COUNTRY REGULATIONS AS PER GS-22-008.
PACKAGING SPECIFICATION AS PER GS-14-920.
- S= STRAIN RELIEF ACCESSORY, SEE TABLE FOR AVAILABILITY,
OMIT LETTER FROM PARTNUMBER IF NOT APPLICABLE.
- SIZE 2 X 3 AND 2 X 4 WILL NOT HAVE POSITION #1 TRIANGLE SHOWING

				AVAILABILITY
89361-7XX			○	FROM 2X3 POS UP TO 2X17
89361-3XX		○		FROM 2x17 POS UP TO 2x25
89361-1XX	○			FROM 2x3 POS UP TO 2x25
PRODUCT CODE	WITHOUT CENTRAL KEY	WITH CENTRAL KEY	WITH CENTRAL KEY AND FRICTION LATCH BUMP	

mat'l. code SEE NOTE		surface ISO 1302 ✓	tolerance ISO 406 ISO 1101	projection 	product family
ltr	ecn no dr date	tolerances unless otherwise specified			title 2.00mm IDC 0.2µm Au
K	F06-0211 LMU 06.07.03	angles	.0±.3		
L	F07-0215 LMU 07.06.12	linear	.00±.13	scale 1:1	dwg no 89361
M	F08-0218 JCO 08.09.09	0°±'	.000±.05		
N	F09-0081 JCO 09.08.27	dr	L.MULIN 07.03.20		type Product Customer Drawing
P	F-21434 BVE 15.07.16	chr	J.COMPAGNON 07.03.20		
		appd	JM.C 07.03.20		
sheet index	revision sheet				

X-ON Electronics

Largest Supplier of Electrical and Electronic Components

Click to view similar products for [Headers & Wire Housings](#) category:

Click to view products by [Amphenol](#) manufacturer:

Other Similar products are found below :

[892-18-020-10-001101](#) [58102-G61-06LF](#) [582553-1](#) [0009485154](#) [009176003701906](#) [0050291907](#) [LY20-4P-DT1-P1E-BR](#) [02.125.8002.8](#)
[609-3404](#) [61062-3](#) [622-0430](#) [622-3653LF](#) [63453-116](#) [636-1030](#) [636-1427](#) [636-3427](#) [636-4007](#) [641938-9](#) [641991-4](#) [644827-2](#) [65817-010LF](#)
[65817-015LF](#) [65863-015LF](#) [66207-023LF](#) [67095-007LF](#) [67601157](#) [68648-049](#) [70.362.1628.0](#) [70-4210](#) [70-4226B](#) [70-4853B](#) [707-5020](#) [707-](#)
[5028](#) [71.350.2428.0](#) [71918-208LF](#) [71961-016LF](#) [733-134](#) [733-162](#) [754199-000](#) [760-3052](#) [787-8014-00](#) [79531-3000](#) [FCN-360C032-B](#) [FCN-](#)
[367T-T012/H](#) [FCN-723D010/2](#) [80.063.4001.1](#) [800-90-001-10-001000](#) [800-90-010-10-002000](#) [801-43-002-10-013000](#) [801-43-006-10-002000](#)