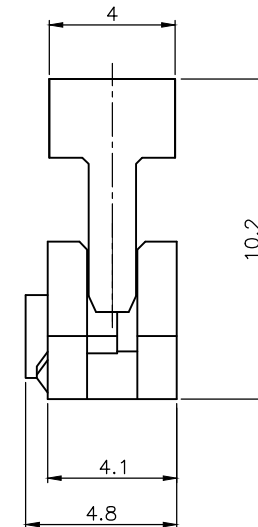
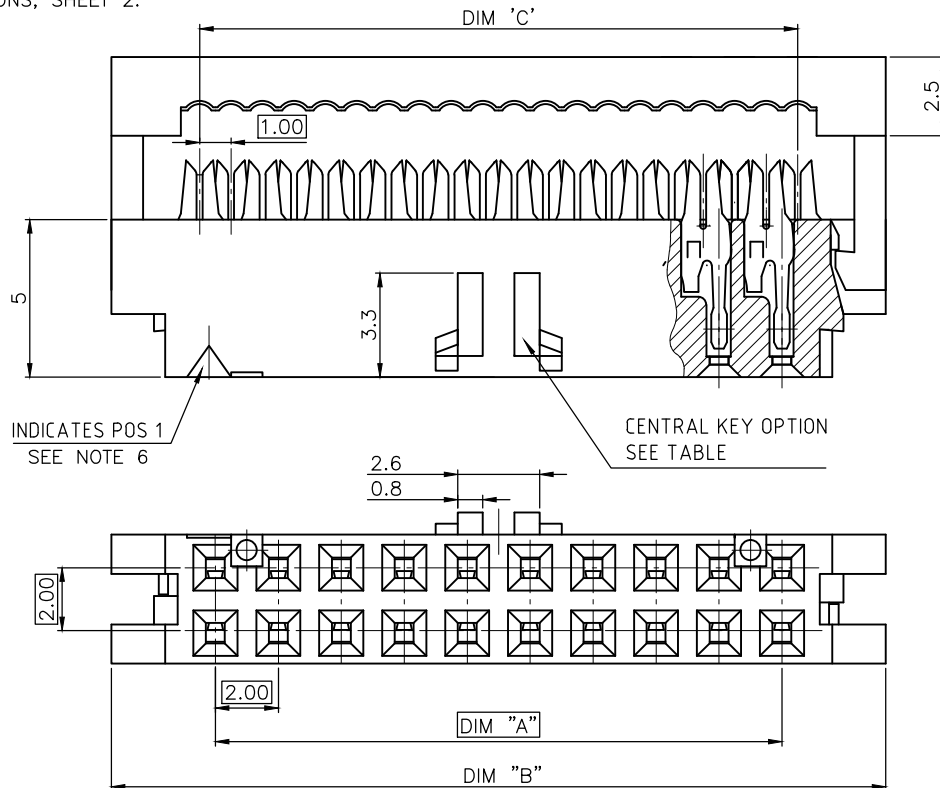


PRODUCT NUMBER

89361-YXXSLF

- LEAD FREE, RoHS COMPLIANT
SEE NOTE 4
- STRAIN RELIEF OPTION, NOTE 5.
- TOTAL NB OF POSITIONS, SHEET 2.
- FEATURES, SHEET 2.



VIEW WITHOUT COVER

| | | | | | | |
|-------------------------|----------------|--|----------|---------------------------------------|---------------------------|------------------------|
| mat'l. code SEE NOTE | | surface ISO 1302 <input checked="" type="checkbox"/> ISO 406 ISO 1101 | | projection | product family MINITEK | |
| ltr | ecn no | dr | date | tolerances unless otherwise specified | | title |
| K | F06-0211 | LMU | 06.07.03 | angles | .0±.3 | 2.00mm IDC 0.2µm Au |
| L | F07-0215 | LMU | 07.06.12 | linear | .00±.13 | |
| M | F08-0218 | JCO | 08.09.09 | 0°±x' | .000±.05 | |
| N | F09-0081 | JCO | 09.08.27 | dr | L.MULIN | 07.03.20 |
| P | F-21434 | BVE | 15.07.16 | enr | J.COMPAGNON | 07.03.20 |
| | | | | chr | | |
| | | | | appd | JM.C | 07.03.20 |
| sheet index | revision sheet | P | P | | | |
| | | 1 | 2 | | | |

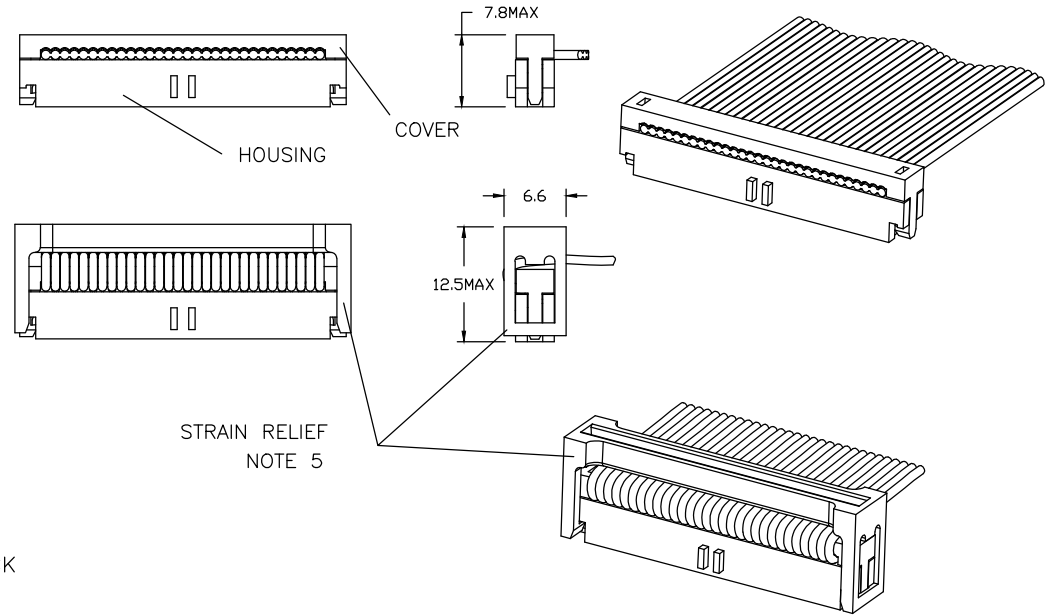


scale 1:1
dwg no 89361 sheet 1 of 2 size A3
type Product Customer Drawing



Copyright FCJ

| PRODUCT SIZE | TOTAL NB OF POS | DIM "A" | DIM "B" | DIM "C" | STRAIN RELIEF OPTION |
|--------------|-----------------|---------|---------|---------|----------------------|
| 89361-X06LF | 2x3 | 4 | 10.6 | 5 | YES |
| -X08LF | 2x4 | 6 | 12.6 | 7 | YES |
| -X10LF | 2x5 | 8 | 14.6 | 9 | YES |
| -X12LF | 2x6 | 10 | 16.6 | 11 | YES |
| -X14LF | 2x7 | 12 | 18.6 | 13 | YES |
| -X16LF | 2x8 | 14 | 20.6 | 15 | YES |
| -X18LF | 2x9 | 16 | 22.6 | 17 | YES |
| -X20LF | 2x10 | 18 | 24.6 | 19 | YES |
| -X22LF | 2x11 | 20 | 26.6 | 21 | NOT TOOLED |
| -X24LF | 2x12 | 22 | 28.6 | 23 | YES |
| -X26LF | 2x13 | 24 | 30.6 | 25 | YES |
| -X28LF | 2x14 | 26 | 32.6 | 27 | NOT TOOLED |
| -X30LF | 2x15 | 28 | 34.6 | 29 | YES |
| -X34LF | 2x17 | 32 | 38.6 | 33 | YES |
| -X36LF | 2x18 | 34 | 40.6 | 35 | NOT TOOLED |
| -X40LF | 2x20 | 38 | 44.6 | 39 | YES |
| -X44LF | 2x22 | 42 | 48.6 | 43 | YES |
| -X48LF | 2x24 | 46 | 52.6 | 47 | YES |
| -X50LF | 2x25 | 48 | 54.6 | 49 | YES |



NOTES :

- MATERIAL : TERMINAL PHOSPHORE BRONZE
BASE AND COVER : PBT GLASSFILLED UL 94V-0 BLACK
- PLATING : GOLD 0.2µm Au MIN ON CONTACT AREA
NICKEL 1.27µm MIN UNDERPLATING ALL OVER
- RECOMMENDED CABLE SIZE : AWG28, STRANDED
- THIS PRODUCT MEETS EUROPEAN UNION DIRECTIVES AND OTHER COUNTRY REGULATIONS AS PER GS-22-008.
PACKAGING SPECIFICATION AS PER GS-14-920.
- S= STRAIN RELIEF ACCESSORY, SEE TABLE FOR AVAILABILITY,
OMIT LETTER FROM PARTNUMBER IF NOT APPLICABLE.
- SIZE 2 X 3 AND 2 X 4 WILL NOT HAVE POSITION #1 TRIANGLE SHOWING

| | | | | AVAILABILITY |
|--------------|---------------------|------------------|--|--------------------------|
| 89361-7XX | | | ○ | FROM 2X3 POS UP TO 2X17 |
| 89361-3XX | | ○ | | FROM 2x17 POS UP TO 2x25 |
| 89361-1XX | ○ | | | FROM 2x3 POS UP TO 2x25 |
| PRODUCT CODE | WITHOUT CENTRAL KEY | WITH CENTRAL KEY | WITH CENTRAL KEY AND FRICTION LATCH BUMP | |

| | | | | | | |
|-------------------------|-----------------------|---------------------------------------|-------------------------------|----------------|---------------------------------|-------------------------------|
| mat'l. code SEE NOTE | | surface ISO 1302 ✓ | tolerance ISO 406 ISO 1101 | projection | product family | |
| ltr | ecn no dr date | tolerances unless otherwise specified | | | title 2.00mm IDC 0.2µm Au | |
| K | F06-0211 LMU 06.07.03 | angles | .0±.3 | | | |
| L | F07-0215 LMU 07.06.12 | linear | .00±.13 | scale 1:1 | dwg no 89361 | |
| M | F08-0218 JCO 08.09.09 | 0°±' | .000±.05 | | | sheet 2 of 2 size |
| N | F09-0081 JCO 09.08.27 | dr | L.MULIN 07.03.20 | | A3 | |
| P | F-21434 BVE 15.07.16 | chr | J.COMPAGNON 07.03.20 | | | type Product Customer Drawing |
| | | appd | JM.C 07.03.20 | | | |
| sheet index | revision sheet | | | | | |

X-ON Electronics

Largest Supplier of Electrical and Electronic Components

Click to view similar products for [Headers & Wire Housings](#) category:

Click to view products by [Amphenol](#) manufacturer:

Other Similar products are found below :

[892-18-020-10-001101](#) [58102-G61-06LF](#) [582553-1](#) [0009485154](#) [009176003701906](#) [0050291907](#) [LY20-4P-DT1-P1E-BR](#) [02.125.8002.8](#)
[609-3404](#) [61062-3](#) [622-0430](#) [622-3653LF](#) [63453-116](#) [636-1030](#) [636-1427](#) [636-3427](#) [636-4007](#) [641938-9](#) [641991-4](#) [644827-2](#) [65817-010LF](#)
[65817-015LF](#) [65863-015LF](#) [66207-023LF](#) [67095-007LF](#) [67601157](#) [68648-049](#) [70.362.1628.0](#) [70-4210](#) [70-4226B](#) [70-4853B](#) [707-5020](#) [707-](#)
[5028](#) [71.350.2428.0](#) [71918-208LF](#) [71961-016LF](#) [733-134](#) [733-162](#) [754199-000](#) [760-3052](#) [787-8014-00](#) [79531-3000](#) [FCN-360C032-B](#) [FCN-](#)
[367T-T012/H](#) [FCN-723D010/2](#) [80.063.4001.1](#) [800-90-001-10-001000](#) [800-90-010-10-002000](#) [801-43-002-10-013000](#) [801-43-006-10-002000](#)