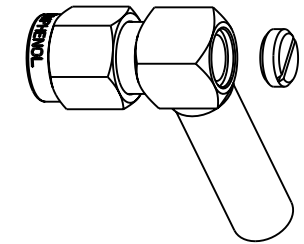
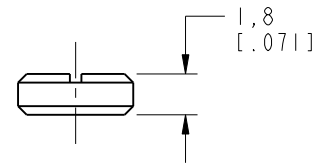


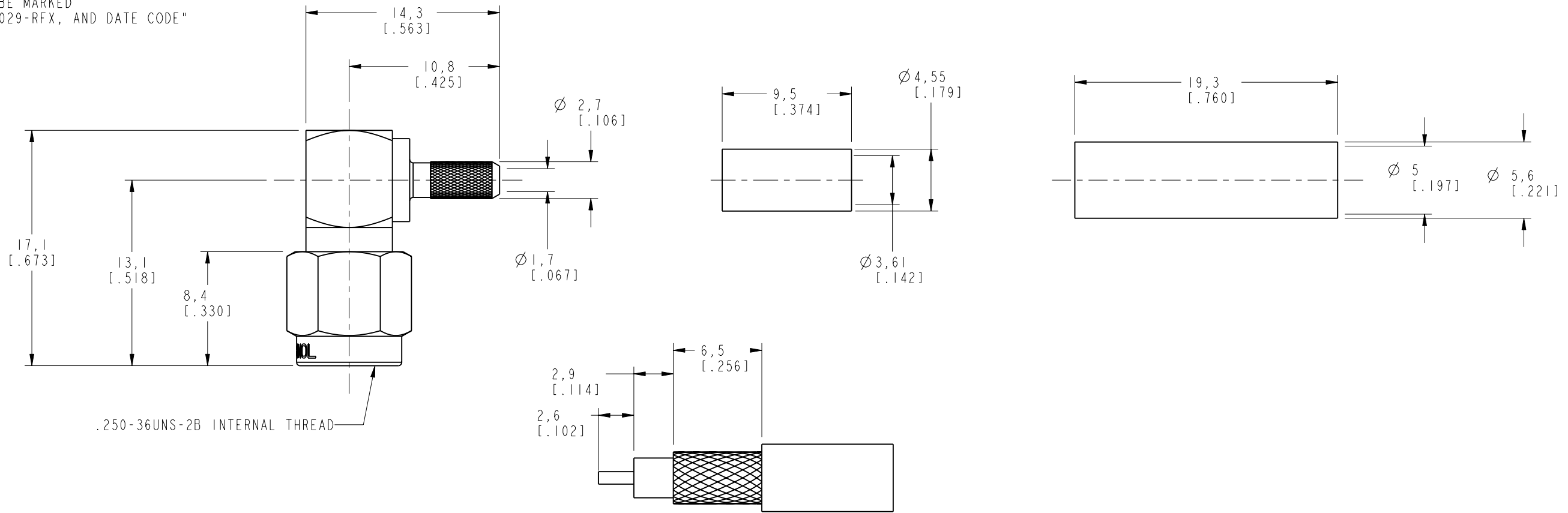
NOTES:

1. MATERIALS OF CONSTRUCTION:  
 SHELL, HOUSING & COVER = BRASS, NICKEL PLATED (.000100 MIN THICK)  
 CONTACT PIN = BRASS, GOLD PLATED (.000050 MIN THICK)  
 RETAINER RING = BeCu, NATURAL  
 FERRULE = COPPER, NICKEL PLATED (.000052 MIN THICK)  
 INSULATOR = TEFLON, MIL-P-19468  
 GASKET = SILICONE RUBBER, COLOR RED  
 HEAT SHRINK TUBING = COLOR BLACK
2. CRIMPED FERRULE = HEX CRIMP SIZE .151  
 CONTACT PIN TO SOLDER.
3. ELECTRICAL:  
 A. IMPEDANCE: 50 OHM  
 B. FREQUENCY RANGE: DC - 12.4 GHz  
 C. VSWR(RETURN LOSS): XXXX (XXXX dB), MAX.  
 D. DIELECTRIC WITHSTANDING VOLTAGE: 750 VRMS, MIN.
4. MECHANICAL:  
 A. DURABILITY: 500 CYCLES MIN.  
 B. TEMPERATURE RANGE: -65° C TO +165° C
5. PACKAGING:  
 A. QUANTITY: SINGLE PACK  
 B. MARKING: BAG TO BE MARKED  
 "AMPHENOL, 901-10029-RFX, AND DATE CODE"

|                   |     |                 |         |       |      |
|-------------------|-----|-----------------|---------|-------|------|
| 901-10029-RFX     |     | REVISIONS       |         |       |      |
| DRAWING NO.       | REV | DESCRIPTION     | DATE    | ECO   | APPR |
| THIRD ANGLE PROJ. | B   | RELEASE TO MFG. | 9/14/01 | 43834 | CPM  |
|                   | C   | SEE SHEET 1     | 8/6/04  | 45101 | CPM  |



SCALE 1.500



.250-36UNS-2B INTERNAL THREAD

RECOMMENDED CABLE STRIPPING DIMENSIONS  
 SCALE 3.000

**CUSTOMER OUTLINE DRAWING**  
 ALL OTHER SHEETS ARE FOR INTERNAL USE ONLY

|   |                        |                          |                 |   |               |  |          |
|---|------------------------|--------------------------|-----------------|---|---------------|--|----------|
| UNLESS OTHERWISE SPECIFIED, DIMENSIONS ARE IN MM (INCHES) AND TOLERANCES ARE:<br>0.5 - 6mm ±0.2mm<br>6 - 30mm ±0.4mm<br>30 - 120mm ±0.6mm   | MATERIAL               | DRAWN<br>C. McGRATH      | DATE<br>8/20/01 | TITLE<br>SMA R/A<br>CRIMP PLUG<br>(FOR RG-316U/D CABLE) |               | Amphenol<br>Amphenol Corporation<br>Communication and Network<br>Products Division<br>Danbury, CT U.S.A. 06810 |          |
|   | REFERENCE              | ENGINEER<br>O. BARTHELME | DATE<br>8/20/01 |   |               |  |          |
| NOTICE - These drawings, specifications, or other data (1) are, and remain the property of Amphenol Corp. (2) must be returned upon request; and (3) are confidential and not to be disclosed to any person other than those to whom they are given by Amphenol Corp. The furnishing of these drawings, specifications, or other data by Amphenol Corp., or to any other person to anyone for any purpose is not to be regarded by implication or otherwise in any manner licensing, granting rights or permitting such holder or any other person to manufacture, use or sell any product, process or design, patented or otherwise, that may in any way be related to or disclosed by said drawings, specifications, or other data. | GEN# 901-9881-RFX_ASSY | APPROVED<br>O. BARTHELME | DATE<br>9/14/01 | CODE ID<br>74868  | DWG SIZE<br>B | DRAWING NO.<br>901-10029-RFX   | REV<br>B |
|   |                        |                          |                 | SCALE: 3.0:1 SHEET 2 OF 2                               |               |  |          |

## X-ON Electronics

Largest Supplier of Electrical and Electronic Components

*Click to view similar products for [RF Connectors / Coaxial Connectors](#) category:*

*Click to view products by [Amphenol](#) manufacturer:*

Other Similar products are found below :

[8915-1511-000](#) [89674-0827](#) [6001-7071-019](#) [6002-7051-003](#) [6002-7551-202](#) [6059674-1](#) [619550-1](#) [630059-000](#) [M39030/3-01N](#) [M3933/25-36N](#) [6500-7071-046](#) [6769](#) [CX050L2AQ](#) [7002-1542-011](#) [7004-1512-000](#) [7009-1511-004](#) [7010-1511-000](#) [7029-1511-060](#) [7101-1541-010](#) [7101-1571-002](#) [7105-1521-002](#) [7145-1521-002](#) [7203-1571-003](#) [7209-1511-011](#) [7210-1511-015](#) [7210-1511-019](#) [73137-5015](#) [73216-2241](#) [7325-1512-000](#) [73404-2300](#) [7405-1521-005](#) [7405-1521-802](#) [7406-1521-005](#) [8527](#) [8547](#) [FS11V](#) [8808-1511-001](#) [9049-9513-000](#) [9074-9513-000](#) [9101-9573-002](#) [910A205F](#) [9130-9573-002](#) [PL11SC-026](#) [PL375-33](#) [PL40-5](#) [PL71-9](#) [PL74C-221](#) [PL75MC-217](#) [PL803-7](#) [980-8666-005](#)