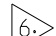
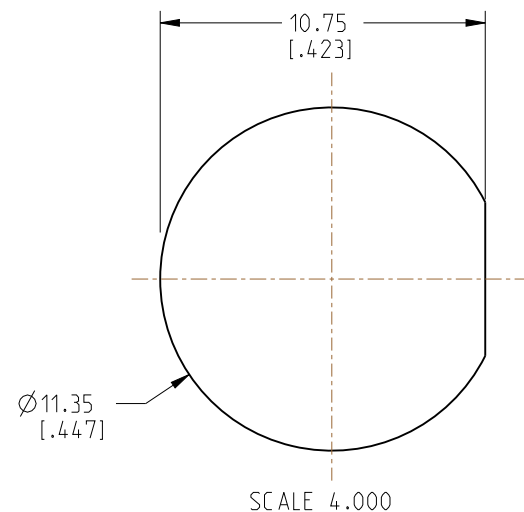


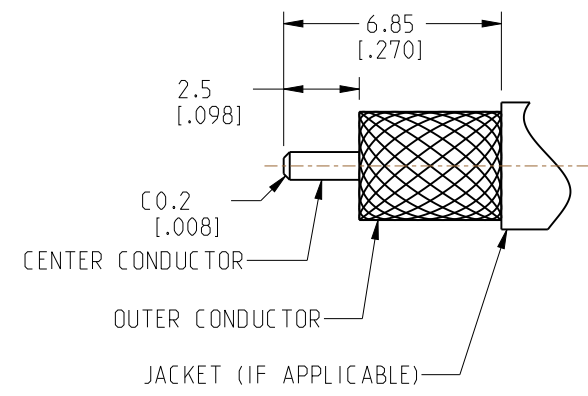
NOTES:

1. MATERIALS AND FINISHES:
  - BODY - BRASS, NICKEL PLATING
  - CONTACT - BERYLLIUM COPPER, GOLD PLATING
  - INSULATOR - PTFE, NATURAL
  - LOCK WASHER & HEX NUT - BRASS, NICKEL PLATING
  - O-RING & GASKET - SILICONE RUBBER, RED
2. ELECTRICAL:
  - A. IMPEDANCE: 50 OHM
  - B. FREQUENCY RANGE: DC-26.5 GHz
  - C. VSWR (RETURN LOSS): 1.15 MAX. DC - 12 GHz  
1.20 MAX. 12 - 18 GHz  
1.30 MAX. 18 - 26.5 GHz
  - D. DIELECTRIC WITHSTANDING VOLTAGE: 1000 VRMS, MIN.
3. MECHANICAL:
  - A. DURABILITY: 500 CYCLES MIN.
  - B. TEMPERATURE RANGE: -65°C TO 165°C
  - C. SEALING: MEETS IP67 REQUIREMENTS IN UNMATED CONDITION
4. PACKAGING:
  - A. QUANTITY: SINGLE PACK
  - B. MARKING: PACKAGING TO BE MARKED "AMPHENOL RF, 901-10814, AND DATE CODE"
  - C. HEX NUT, LOCK WASHER AND GASKET ARE PACKAGED LOOSE
5. CABLE ASSEMBLY INSTRUCTIONS:
  - A. TRIM CABLE AS SHOWN.
  - B. INSERT CABLE CENTER CONDUCTOR INTO CONNECTOR AND SOLDER BODY TO THE OUTER CONDUCTOR.
6.  SHOWS CABLE ENTRY DIMENSIONS.
7. MAX. PANEL THICKNESS=3.6 MM

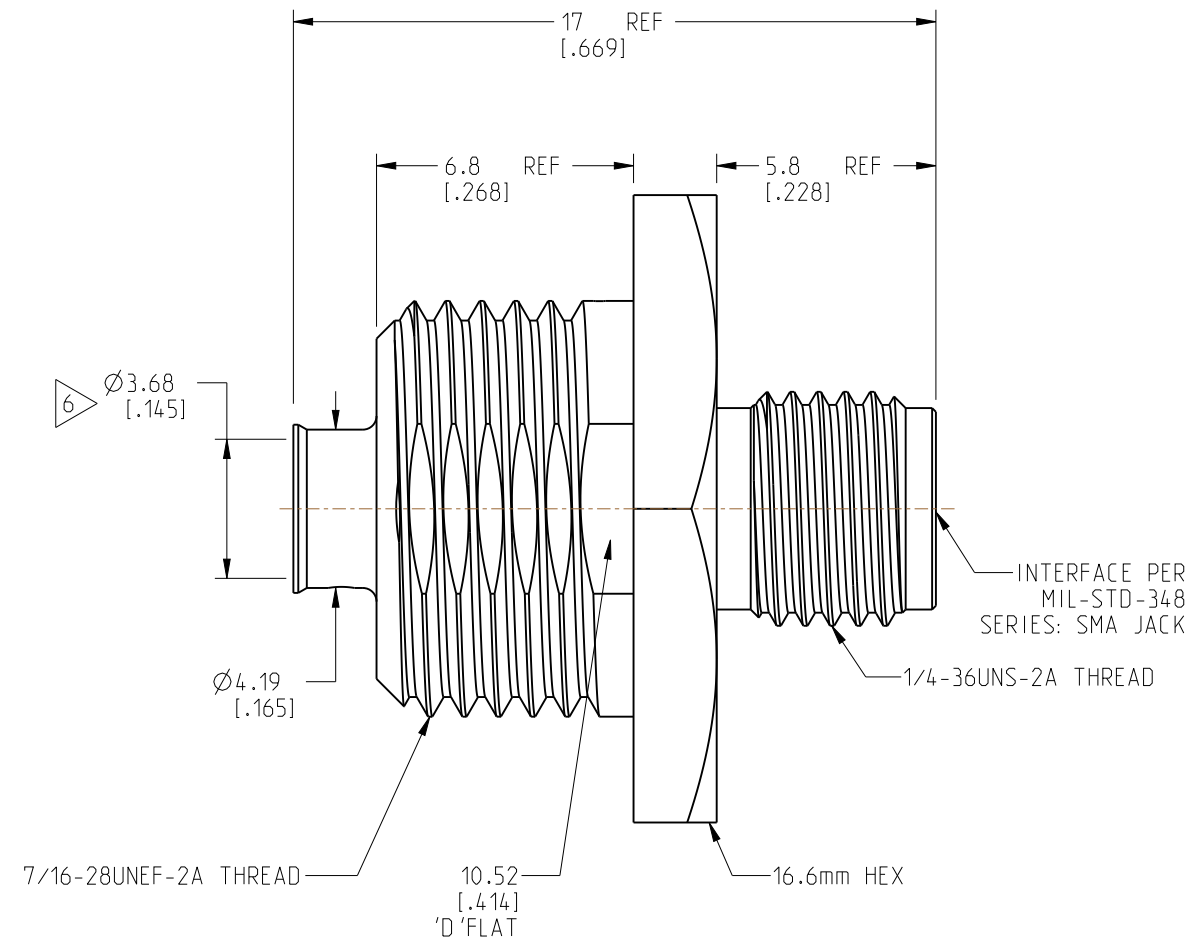
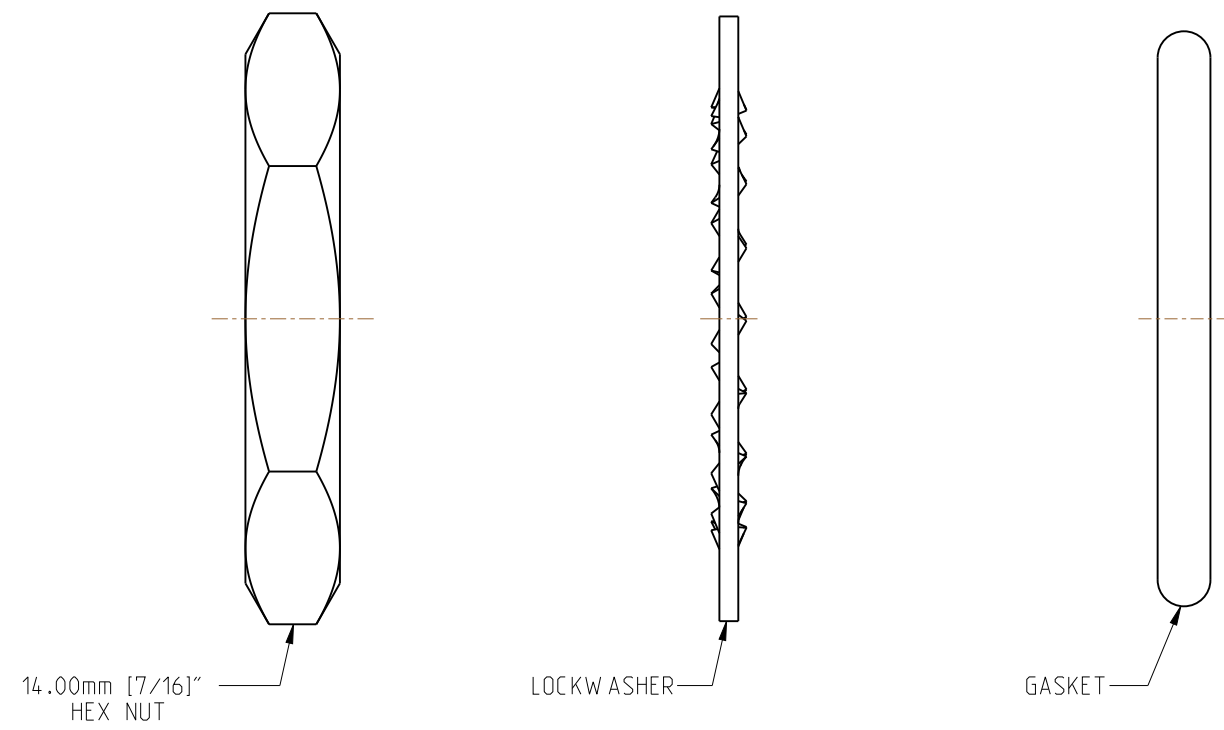
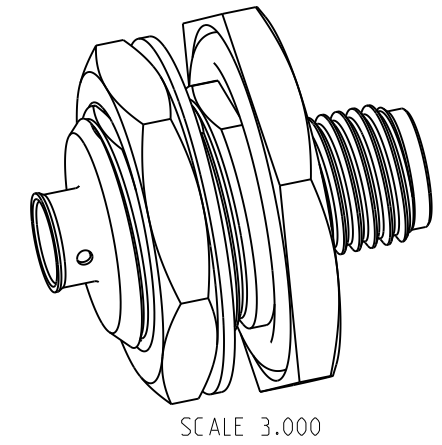
REVISIONS				
REV	DESCRIPTION	DATE	ECN	BY
A	RELEASE TO MFG.	24-NOV-21	16027	SH



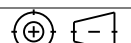
**RECOMMENDED MOUNTING HOLE DIMENSIONS**



**RECOMMENDED CABLE STRIPPING DIMENSIONS**



**CUSTOMER OUTLINE DRAWING**  
 ALL OTHER SHEETS ARE FOR INTERNAL USE ONLY

NOTICE: These drawings, specifications, or other data (1) are, and remain the property of Amphenol corp. (2) must be returned upon request; and (3) are confidential and not to be disclosed to any person other than those to whom they are given by Amphenol Corp. The furnishing of these drawings, specifications, or other data by Amphenol Corp., or to any other person to anyone for any purpose is not to be regarded by implication or otherwise in any manner licensing, granting rights to permitting such holder or any other person to manufacture, use or sell any product, process or design, patented or otherwise, that may in any way be related to or disclosed by said drawings, specifications, or other data.		UNLESS OTHERWISE SPECIFIED DIMENSIONS ARE METRIC (INCHES) AND TOLERANCES ARE: <0.5mm = ±0.05mm [ $\pm$ 0.002] 0.5 - 6mm = ±0.1mm [ $\pm$ 0.020 - 0.236 = ±0.004] >6.00 - 30mm = ±0.2mm [ $\pm$ 0.236 - 1.181 = ±0.008] >30.00 - 120mm = ±0.3mm [ $\pm$ 1.181 - 4.725 = ±0.012]		MATERIAL ENGR.1 C.CROTTY ENGR.2 JACK LIANG DATE 29-APR-21		TITLE SMA BHD JACK FRONT MOUNT IP67 FOR RG-402 CABLE SHEET NO. 2 OF 2 SCALE: 5.0:1.0		Amphenol RF DRAWING NO. 901-10814 ITEM NO. 901-10814 PART NO. 901-10814		REV A
THIRD ANGLE PROJ. 		REFERENCE 901-10744		EAR# 10107		ANGLES = ±1°		SIZE B		

## X-ON Electronics

Largest Supplier of Electrical and Electronic Components

*Click to view similar products for [RF Connectors / Coaxial Connectors](#) category:*

*Click to view products by [Amphenol](#) manufacturer:*

Other Similar products are found below :

[8915-1511-000](#) [89674-0827](#) [6001-7071-019](#) [6002-7051-003](#) [6002-7551-202](#) [6059674-1](#) [619550-1](#) [630059-000](#) [M39030/3-01N](#) [6500-7071-046](#) [6769](#) [CX050L2AQ](#) [7002-1541-010](#) [7002-1542-011](#) [7002-1572-002](#) [7003-1542-011](#) [7004-1512-000](#) [7009-1511-004](#) [7010-1511-000](#) [7029-1511-060](#) [7101-1541-010](#) [7101-1571-002](#) [7145-1521-002](#) [7203-1571-003](#) [7209-1511-011](#) [7210-1511-015](#) [7210-1511-019](#) [73137-5015](#) [73216-2241](#) [73404-2300](#) [7405-1521-005](#) [7405-1521-802](#) [8527](#) [8547](#) [FS11V](#) [9049-9513-000](#) [9074-9513-000](#) [9101-9573-002](#) [910A205F](#) [9130-9573-002](#) [PL11SC-026](#) [PL375-33](#) [PL40-5](#) [PL74C-221](#) [PL75MC-217](#) [PL803-7](#) [980-8666-005](#) [1200690078](#) [1-201144-1](#) [R107003010W](#)