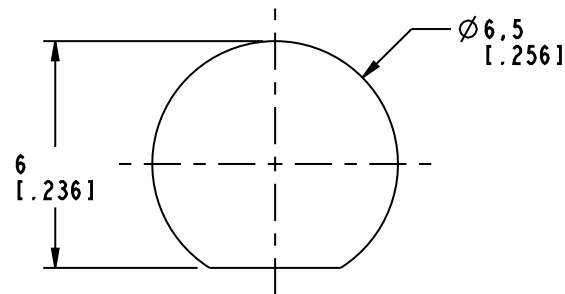
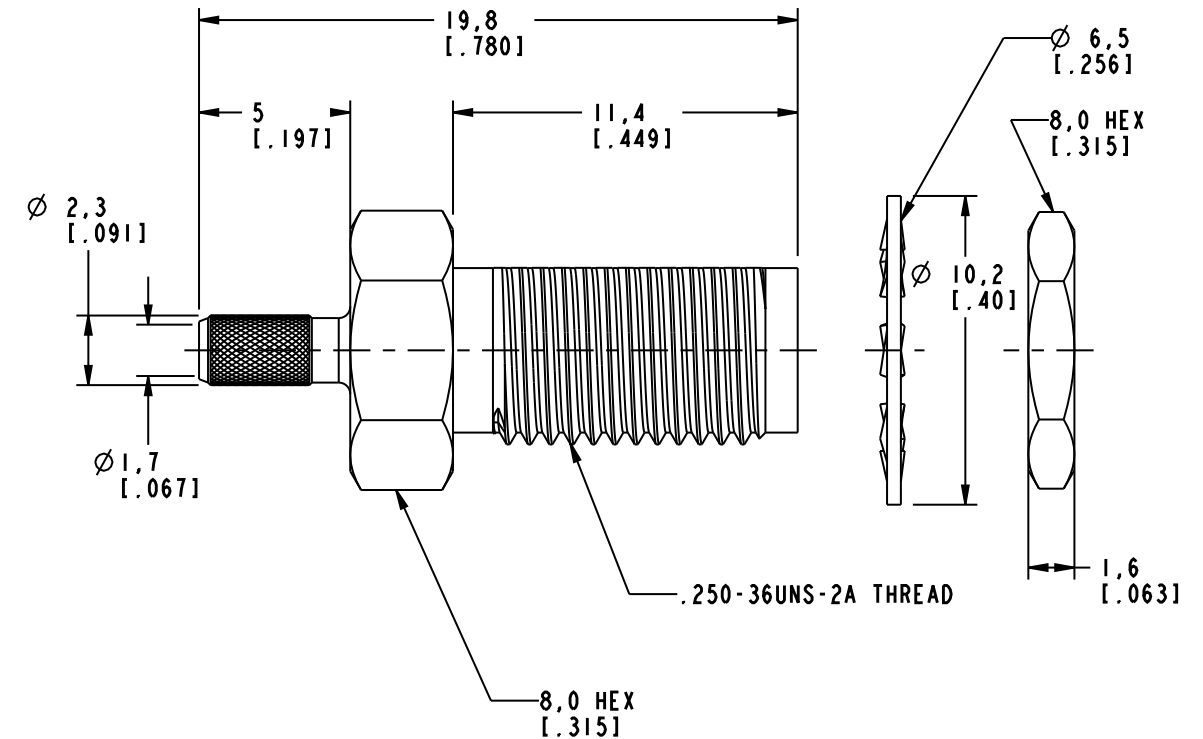
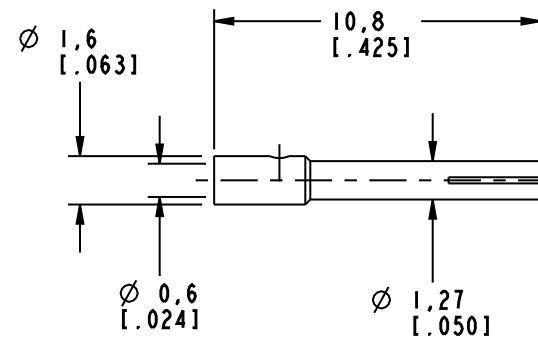
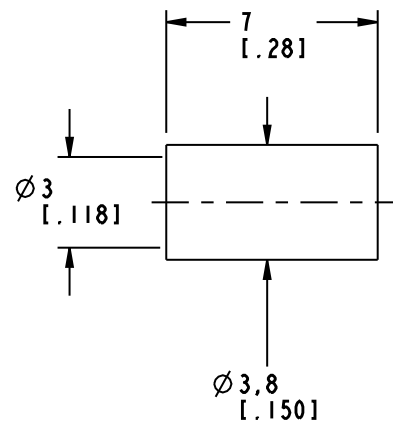
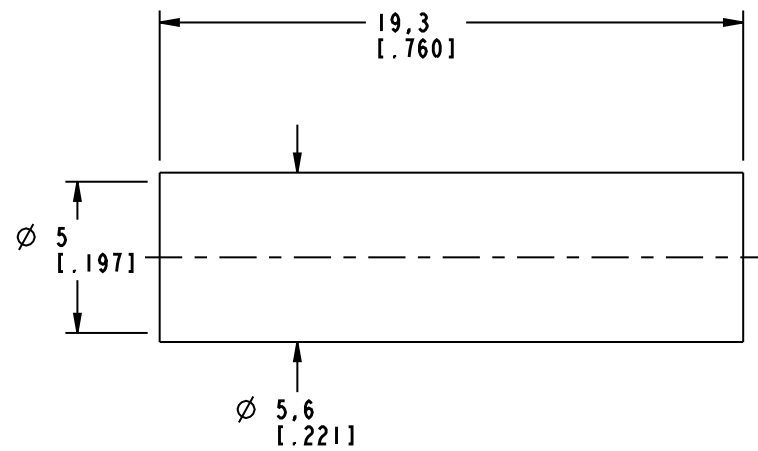
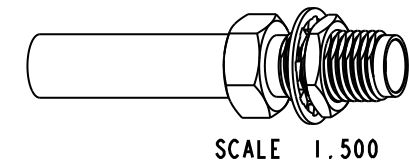


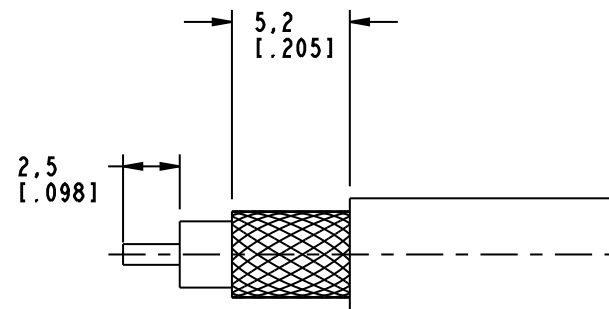
NOTES:

- MATERIALS OF CONSTRUCTION:  
 BODY & HEX NUT = BRASS (ASTM-B16 HO2, C36000), GOLD PLATED (.000003 MIN THICK)  
 CONTACT PIN = BeCu (QQ-C-530), GOLD PLATED (.000050 MIN THICK)  
 LOCKWASHER = BRASS (QQ-B-613), GOLD PLATED (.000003 MIN THICK)  
 FERRULE = COPPER, GOLD PLATED (.000003 MIN THICK)  
 INSULATOR = PTFE, ASTM D 1710 OR EQUIV.  
 HEAT SHRINK TUBING = COLOR BLACK

901-9875		REVISIONS			
DRAWING NO.	REV	DESCRIPTION	DATE	ECO	APPR
THIRD ANGLE PROJ.	A	RELEASE TO MFG.	4/7/95	40352	PB/RV
	C	SEE SHEET 1	10/2/02	44222	CPM



RECOMMENDED MOUNTING HOLE DIMENSIONS  
SCALE 5.000



RECOMMENDED CABLE STRIPPING DIMENSIONS  
SCALE 3.000

**CUSTOMER OUTLINE DRAWING**  
ALL OTHER SHEETS ARE FOR INTERNAL USE ONLY

UNLESS OTHERWISE SPECIFIED, DIMENSIONS ARE IN MM (INCHES) AND TOLERANCES ARE:  
 0.5 - 6mm ±0.2mm  
 6 - 30mm ±0.4mm  
 30 - 120mm ±0.6mm

NOTICE - These drawings, specifications, or other data (1) are, and remain the property of Amphenol Corp. (2) must be returned upon request; and (3) are confidential and not to be disclosed to any person other than those to whom they are given by Amphenol Corp. The furnishing of these drawings, specifications, or other data by Amphenol Corp., or to any other person to anyone for any purpose is not to be regarded by implication or otherwise in any manner licensing, granting rights or permitting such holder or any other person to manufacture, use or sell any product, process or design, patented or otherwise, that may in any way be related to or disclosed by said drawings, specifications, or other data.

MATERIAL  
 REFERENCE  
 GEN# 901-10039-RFX\_ASSY  
 EAR 966280-3 & 111-964413

DRAWN  
C. McGRATH  
 ENGINEER  
O. BARTHELME  
 APPROVED  
O. BARTHELME  
 CAD FILE  
I:\SMA\901-9875

DATE  
10/1/02  
 DATE  
10/1/02  
 DATE  
10/2/02

TITLE  
SMA BULKHEAD  
CRIMP JACK  
(FOR RG-174/U, 188A/U,  
316/U CABLES)

Amphenol  
Amphenol Corporation  
Communication and Network  
Products Division  
Danbury, CT U.S.A. 06810

SCALE: 4.0:1 SHEET 2 OF 2

CODE ID 74868 DWG SIZE B DRAWING NO. 901-9875 REV C

## X-ON Electronics

Largest Supplier of Electrical and Electronic Components

*Click to view similar products for [RF Connectors / Coaxial Connectors](#) category:*

*Click to view products by [Amphenol](#) manufacturer:*

Other Similar products are found below :

[8915-1511-000](#) [89674-0827](#) [6001-7071-019](#) [6002-7051-003](#) [6002-7551-202](#) [6059674-1](#) [619550-1](#) [630059-000](#) [M39030/3-01N](#) [M3933/25-36N](#) [6500-7071-046](#) [6769](#) [CX050L2AQ](#) [7002-1542-011](#) [7004-1512-000](#) [7009-1511-004](#) [7010-1511-000](#) [7029-1511-060](#) [7101-1541-010](#) [7101-1571-002](#) [7105-1521-002](#) [7145-1521-002](#) [7203-1571-003](#) [7209-1511-011](#) [7210-1511-015](#) [7210-1511-019](#) [73137-5015](#) [73216-2241](#) [7325-1512-000](#) [73404-2300](#) [7405-1521-005](#) [7405-1521-802](#) [7406-1521-005](#) [8527](#) [8547](#) [FS11V](#) [8808-1511-001](#) [9049-9513-000](#) [9074-9513-000](#) [9101-9573-002](#) [910A205F](#) [9130-9573-002](#) [PL11SC-026](#) [PL375-33](#) [PL40-5](#) [PL71-9](#) [PL74C-221](#) [PL75MC-217](#) [PL803-7](#) [980-8666-005](#)