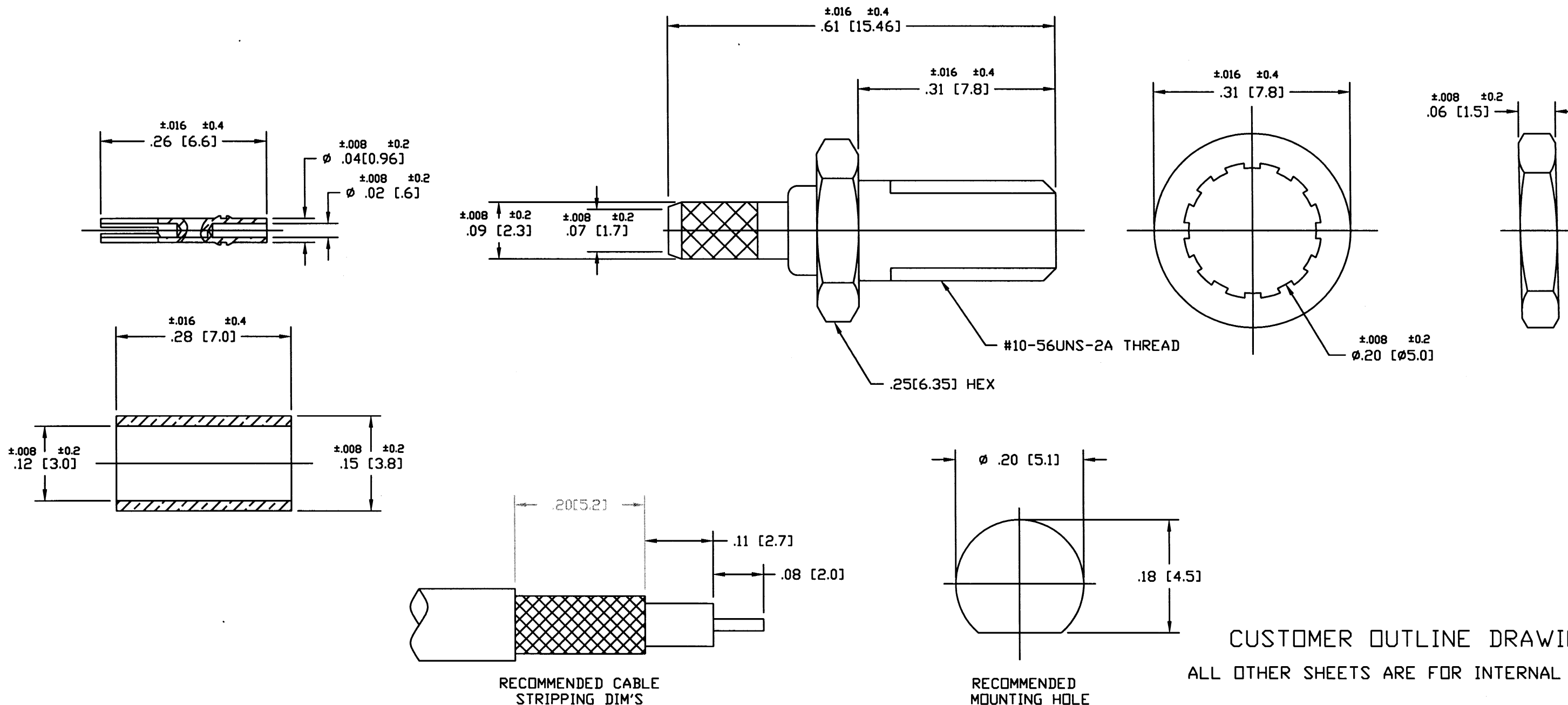


NOTES:

- MATERIALS OF CONSTRUCTION:  
 BODY, HEX NUT & BARREL = BRASS (ASTM-B16 H02), GOLD PLATED (.000003 MIN THICK).  
 CONTACT PIN = BERYLLIUM COPPER, GOLD PLATED (.000030 MIN THICK).  
 LOCK WASHER = BRASS (QQ-B-613), GOLD PLATED (.000003 MIN THICK).  
 FERRULE = COPPER, GOLD PLATED (.000003 MIN THICK).  
 INSULATORS (2) = PTFE ASTM-D-1710 OR EQUIV.
- DO NOT SCALE THIS DRAWING.
- UNLESS OTHERWISE SPECIFIED, ALL DIMENSIONS ARE AFTER PLATING.
- CRIMPED FERRULE = HEX CRIMP SIZE .128

|                   |     |                 |         |       |      |
|-------------------|-----|-----------------|---------|-------|------|
| 919-128J-51SX     |     | REVISIONS       |         |       |      |
| DRAWING NO.       | REV | DESCRIPTION     | DATE    | ECO   | APPR |
| THIRD ANGLE PROJ. | A   | RELEASE TO MFG. | 7/29/99 | 43080 | CPM/ |
|                   | B   | SEE SHEET 1     | 1-23-02 | 43947 | CPM/ |



CUSTOMER OUTLINE DRAWING  
 ALL OTHER SHEETS ARE FOR INTERNAL USE ONLY

|   |                           |                      |  |   |   |                              |            |
|---|---------------------------|----------------------|--|---|---|------------------------------|------------|
| UNLESS OTHERWISE SPECIFIED, DIMENSIONS ARE IN INCHES AND TOLERANCES ARE:<br>2 PLACE DECIMAL 3 PLACE DECIMAL ANGLES<br>$\pm 0.015$ (0,381 mm) $\pm 0.005$ (0,127 mm) $\pm 1^\circ$   | MATERIAL                  | DRAWN<br>C. McGRATH  | DATE<br>7/20/99                                | TITLE   | <b>Amphenol</b><br>Amphenol Corporation<br>RF/Microwave Operations<br>Danbury, Conn. U.S.A. 06810 |                              |            |
|   | REFERENCE<br>EAR 967292-0 | ENGINEER<br>T. AUBIN | DATE<br>7/20/99                                | MCX BULKHEAD CRIMP<br>JACK (FOR RG-174/U,<br>188A/U, 316/U) |   |                              |            |
| NOTICE - These drawings, specifications, or other data (1) are, and remain the property of Amphenol Corp. (2) must be returned upon request; and (3) are confidential and not to be disclosed to any person other than those to whom they are given by Amphenol Corp. The furnishing of these drawings, specifications, or other data by Amphenol Corp., or to any other person to anyone for any purpose is not to be regarded by implication or otherwise in any manner licensing, granting rights or permitting such holder or any other person to manufacture, use or sell any product, process or design, patented or otherwise, that may in any way be related to or disclosed by said drawings, specifications, or other data. | APPROVED<br>T. AUBIN      | DATE<br>7/29/99      | CAD FILE<br>H:\PETE\MCX\919\ASSY\128J\51SX000C | CODE ID<br>74868  | DWG SIZE<br>B   | DRAWING NO.<br>919-128J-51SX | ISSUE<br>B |
|   |                           |                      |  |   | SCALE: 6:1  | SHEET 2 OF 2                 |            |

## X-ON Electronics

Largest Supplier of Electrical and Electronic Components

*Click to view similar products for [RF Connectors / Coaxial Connectors](#) category:*

*Click to view products by [Amphenol](#) manufacturer:*

Other Similar products are found below :

[8915-1511-000](#) [89674-0827](#) [6001-7071-019](#) [6002-7051-003](#) [6002-7551-202](#) [6059674-1](#) [619550-1](#) [630059-000](#) [M39030/3-01N](#) [6500-7071-046](#) [6769](#) [CX050L2AQ](#) [7002-1542-011](#) [7004-1512-000](#) [7009-1511-004](#) [7010-1511-000](#) [7029-1511-060](#) [7101-1541-010](#) [7101-1571-002](#) [7105-1521-002](#) [7145-1521-002](#) [7203-1571-003](#) [7209-1511-011](#) [7210-1511-015](#) [7210-1511-019](#) [73137-5015](#) [73216-2241](#) [73404-2300](#) [7405-1521-005](#) [7405-1521-802](#) [7406-1521-005](#) [8527](#) [8547](#) [FS11V](#) [8808-1511-001](#) [9049-9513-000](#) [9074-9513-000](#) [9101-9573-002](#) [910A205F](#) [9130-9573-002](#) [PL11SC-026](#) [PL375-33](#) [PL40-5](#) [PL71-9](#) [PL74C-221](#) [PL75MC-217](#) [PL803-7](#) [980-8666-005](#) [1200690078](#) [1-201144-1](#)