

PRODUCT NUMBER

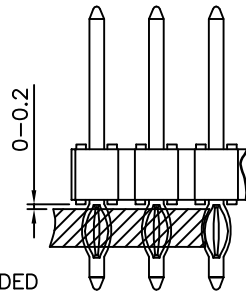
93690-YXX-XXLF

PLATING, SEE TABLE

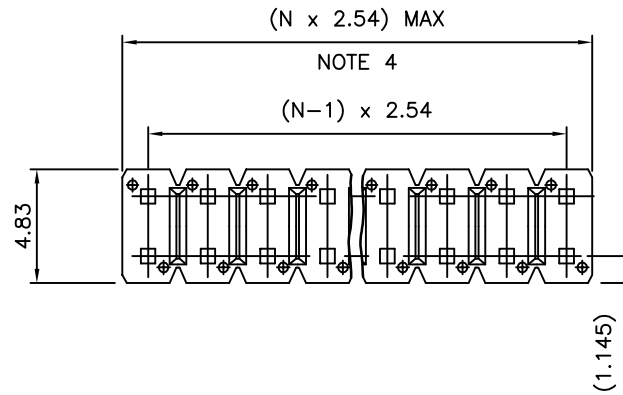
LEAD FREE  
SEE NOTE 6 & 7

TOTAL NB OF POS  
04 TO 72

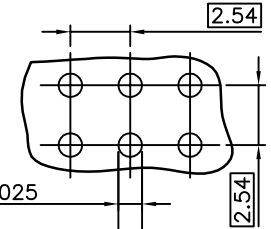
PIN STYLE	DIM "A" REF	DIM "B" ±0.3	DIM "L" ±0.15
01	7.50	4.50	14.78
02	10.14	4.50	17.40
03	5.68	4.50	12.83
04	14.80	4.75	22.15
05	8.30	4.50	15.44
06	6.80	3.60	12.90
07	6.70	3.40	12.62
08	5.20	3.40	11.10
09	8.30	3.60	14.40
10	9.20	3.35	15.09



RECOMMENDED POSITION ON THE PCB

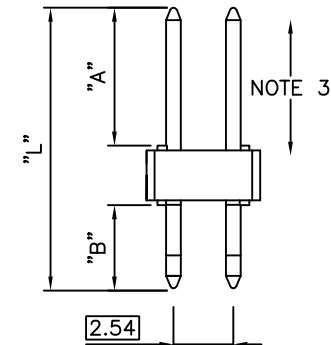
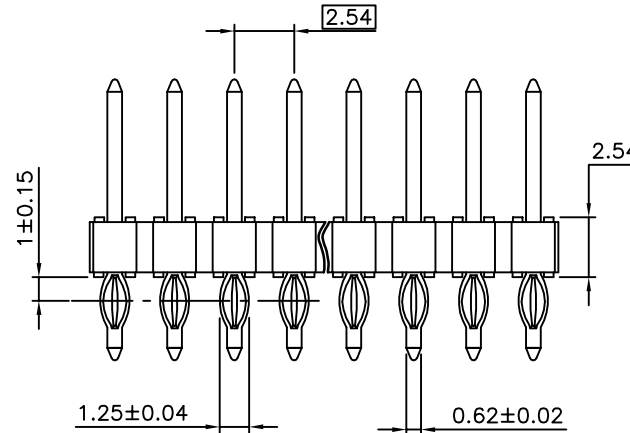


DRILLED HOLE  $\phi 1.15 \pm 0.025$   
Cu 25 $\mu$ m-65 $\mu$ m  
Sn 8 $\mu$ m-18 $\mu$ m  
FINISHED PLATED HOLE  $\phi 1^{+0.1}_{-0.05}$



NOTES:

- HOUSING MAT'L : HIGH TEMPERATURE THERMOPLASTIC. UL94V-0 COLOR: BLACK
- PIN MATERIAL : COPPER ALLOY
- 9N MIN RETENTION IN EITHER DIRECTION
- TO DETERMINE DIMENSIONS :  
N = NUMBER OF POSITIONS PER ROW  
EXAMPLE : 8 POS PER ROW, N x 2.54 = 20.32mm
- PACKAGING POLYBAGS OR BLIBOX
- LEAD FREE CONNECTOR
- "LF" MEANS THAT THE PRODUCT IS RoHS COMPLIANT THEN MEETS EUROPEAN UNION DIRECTIVES AND OTHER COUNTRY REGULATION AS DESCRIBED IN GS-47-0004



93690-9XX-XXLF	0.2 $\mu$ m GOLD OVER 1.27 $\mu$ m Ni MIN	
93690-7XX-XXLF	GOLD FLASH OVER 1.27 $\mu$ m Ni MIN	1.0 $\mu$ m TIN OVER 1.27 $\mu$ m Ni MIN
93690-5XX-XXLF	0.25 $\mu$ m GOLD/GXT OVER 1.27 $\mu$ m Ni MIN	1.0 $\mu$ m TIN OVER 1.27 $\mu$ m Ni MIN
93690-4XX-XXLF	3.05 $\mu$ m TIN OVER 1.27 $\mu$ m Ni MIN	
93690-1XX-XXLF	0.76 $\mu$ m GOLD/GXT OVER 1.27 $\mu$ m Ni MIN	1.0 $\mu$ m TIN OVER 1.27 $\mu$ m Ni MIN
PLATING	CONTACT AREA	PRESS FIT TAIL AREA

mat'l. code		surface	tolerance	projection	product family
SEE NOTE		ISO 1302	ISO 406 ISO 1101		BSTIK
ltr	ecn no	dr	date	tolerances unless otherwise specified	
R	B-18988	LMU	14.10.06	.x ±0.30	title
				.xx ±0.15	HDR PRESS FIT
				.xxx ±0.05	DOUBLE ROW
K	F08-0148	RTR	08.03.31	mm	scale 5:1
L	F09-0043	JCO	09.05.07		dwg no
M	F10-0229	LMU	10.10.04		sheet 1 of 1
N	B16804	JCO	14.01.21		size
P	B-17404	JCO	14.04.07		A3
					type
					CUSTOMER Drawing
sheet index	revision				
	sheet				

## X-ON Electronics

Largest Supplier of Electrical and Electronic Components

*Click to view similar products for [Headers & Wire Housings](#) category:*

*Click to view products by [Amphenol](#) manufacturer:*

Other Similar products are found below :

[892-18-020-10-001101](#) [58102-G61-06LF](#) [582553-1](#) [0009485154](#) [009176003701906](#) [0050291907](#) [LY20-4P-DT1-P1E-BR](#) [02.125.8002.8](#)  
[609-3404](#) [61062-3](#) [622-0430](#) [622-3653LF](#) [63453-116](#) [636-1030](#) [636-1427](#) [636-3427](#) [636-4007](#) [641938-9](#) [641991-4](#) [644827-2](#) [65817-010LF](#)  
[65817-015LF](#) [65863-015LF](#) [66207-023LF](#) [67095-007LF](#) [67601157](#) [68648-049](#) [70.362.1628.0](#) [70-4210](#) [70-4226B](#) [70-4853B](#) [707-5020](#) [707-](#)  
[5028](#) [71.350.2428.0](#) [71918-208LF](#) [71961-016LF](#) [733-134](#) [733-162](#) [754199-000](#) [760-3052](#) [787-8014-00](#) [79531-3000](#) [FCN-360C032-B](#) [FCN-](#)  
[367T-T012/H](#) [FCN-723D010/2](#) [80.063.4001.1](#) [800-90-001-10-001000](#) [800-90-010-10-002000](#) [801-43-002-10-013000](#) [801-43-006-10-002000](#)