

PRODUCT NUMBER
93696-YYXLF

ROHS COMPATIBLE, SEE NOTE 6
NUMBER OF POSITIONS PER ROW: 03 TO 50.
PLATING CODE
3 = 0.76µm GOLD ON CONTACT AREA.
2µm MIN MATTE TIN ON TAIL.
4µm MIN MATTE TIN FULL PLATED
1.27µm NI MIN UNDERPLATING

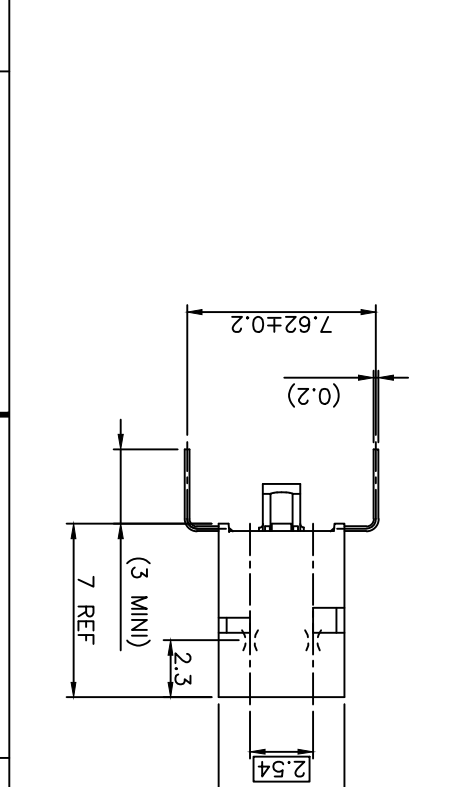
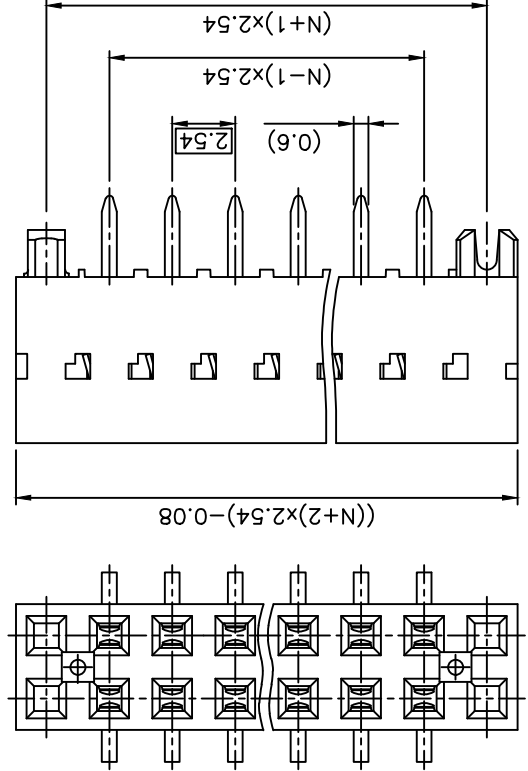
NOTES:
1 - HOUSING MAT'L: THERMOPLASTIC GLASS FILLED
FLAME RETARDANT PER UL 94 V-0 COLOR: GREY.
2 - TERMINAL MATERIAL: PHOSPHOR BRONZE.
3 - 3 UP TO 50 POSITIONS PRODUCT PACKED IN TUBE.
4 - TO DETERMINE DIMENSIONS:
N = NUMBER OF POSITIONS PER ROW
EXAMPLE: 8 POS: ((N+2)x2.54)-0.08=25.32 mm.

5 - Ø2.65 MINI FOR ASSEMBLY WITHOUT INSERTION EFFORT.
6 - ROHS COMPATIBLE PRODUCT SPECIFICATIONS

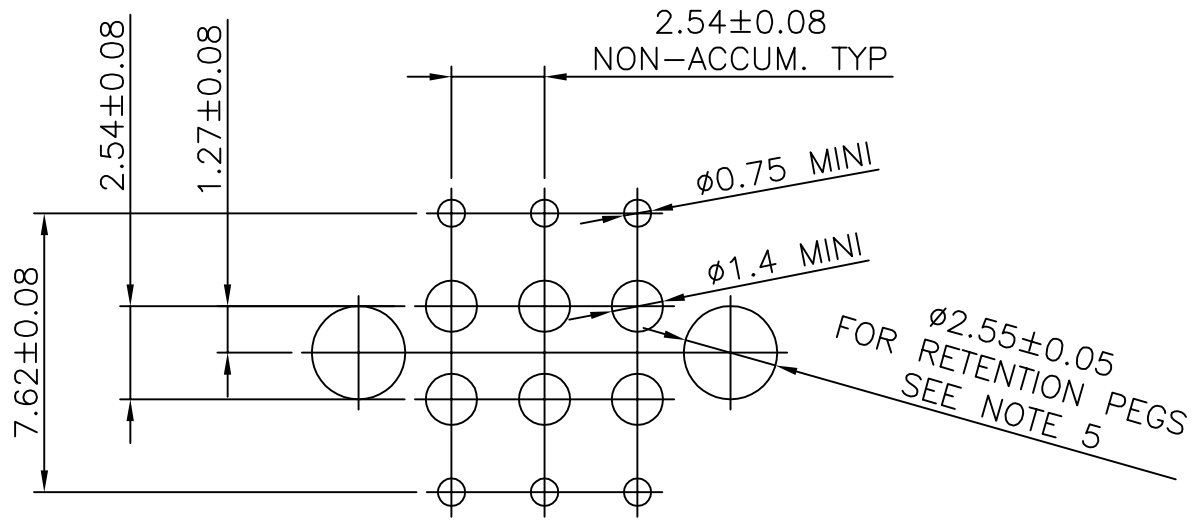
d - PLATING:
- "LF" MEANS THE PRODUCT IS LEAD-FREE,
2µm MINIMUM MATTE TIN OVER 1.27µm
MINIMUM NICKEL UNDERPLATE.

b - MANUFACTURING PROCESS COMPATIBILITY
- THE HOUSING WILL WITHSTAND EXPOSURE TO
260°C ±5°C SOLDER BATH TEMPERATURE FOR
5 SECONDS IN A WAVE SOLDER APPLICATION
WITH A 1.6mm MIN THICK CIRCUIT BOARD.

c - LABELING:
- MEETS PACKAGING SPECS AS PER GS-14-920
d - LEGAL STATEMENT: SEE GS-47-0004



mat'l. code		ISO 1302	ISO 406	ISO 1101	projection	product family	DUBOX
SEE NOTES		tolerances unless otherwise specified	mm	angles	linear	title	BtB RECEIPT.
L	F06-0204	DLE	06.06.28	dr	date	ISO 603	SCALE 5:1
M	F06-0323	DLE	06.11.21	dr	date	mm	
N	B-19124	LMU	14.10.21	dr	date		
H	F10116	GCO	01.01.23	engr	JM.PHAMVAN	95.09.20	
J	F04-0347	DLE	04.11.15	chr	P.NIZZI	95.09.20	
K	F06-0137	DLE	06.02.27	appd	JM.P	95.09.20	
revision	N	B	sheet	index			
sheet		1		2			
type		CUSTOMER		Drawing			
dmg no		93696		A3		sheet 1 of 2 size	



RECOMMENDED HOLE PATTERN



FCIconnect.com

Copyright FCI

mat'l. code SEE NOTES				surface ISO 1302 <input checked="" type="checkbox"/>	tolerance ISO 406 ISO 1101	projection 	product family DUBOX			
ltr	ecn no	dr	date	tolerances unless otherwise specified			title BtB RECEPT. VERT DR TMT			
A	F04-0347	DLE	04.11.15	angles	±0.3					
B	F06-0204	DLE	06.06.28	linear		scale 5:1	dwg no		sheet 2 of -	size
				dr	D LEGRAND	04.11.15			93696 A4	
				enr	P NIZZI	04.11.15				
				chr	D LEGRAND	04.11.15				
				appd	P NZ	04.11.15				
sheet index	revision sheet									

X-ON Electronics

Largest Supplier of Electrical and Electronic Components

Click to view similar products for [Board to Board & Mezzanine Connectors](#) category:

Click to view products by [Amphenol](#) manufacturer:

Other Similar products are found below :

[10135583-642402LF](#) [89885-310LF](#) [589158040000018](#) [6-1393048-0](#) [68683-613](#) [MDF7-12DP-2.54DSA](#) [MDF7-18P-2.54DSA\(01\)](#) [MDF7-20DP-2.54DSA](#) [MDF7-26D-2.54DSA\(55\)](#) [MDF7-3P-2.54DSA\(01\)](#) [MDF7B-3P-2.54DSA\(55\)](#) [MDF7C-11P-2.54DSA\(55\)](#) [MDF7C-18P-2.54DSA\(55\)](#) [MDF7C-5P-2.54DSA\(01\)](#) [MDF7P-5P-2.54DSA\(55\)](#) [75234-0516](#) [FCN-230C068-11](#) [FCN-268F012-G/BD](#) [FCN-268F036-G/BD](#) [FCN-268M012-G/0D](#) [FCN-268M024-G/1D](#) [FCN-360C008-C](#) [FCN-360C040-C](#) [FCN-723J004/1](#) [MIS-048-01-F-D-DP-K](#) [832-10-034-10-001000](#) [93696-325LF](#) [11828-1FA](#) [AXK630345P](#) [18097-0013](#) [ICA-328STT](#) [2007042-2](#) [304400-2](#) [FCN-214Q030-G/0](#) [FCN-215Q040-G/0](#) [FCN-230C068-ESA](#) [FCN-234P048-G/0](#) [FCN-235D050-G/C](#) [FCN-360A3](#) [FCN-360C040-B](#) [210-93-314-41-105000](#) [2-22603-0](#) [379-064-521-202](#) [MDF7-12P-2.54DSA\(01\)](#) [MDF7-16P-2.54DS\(56\)](#) [MDF7-40DP-2.54DSA\(55\)](#) [MDF7-8P-2.54DSA\(55\)](#) [MDF7B-16P-2.54DSA\(55\)](#) [AXG720047](#) [5031084030](#)