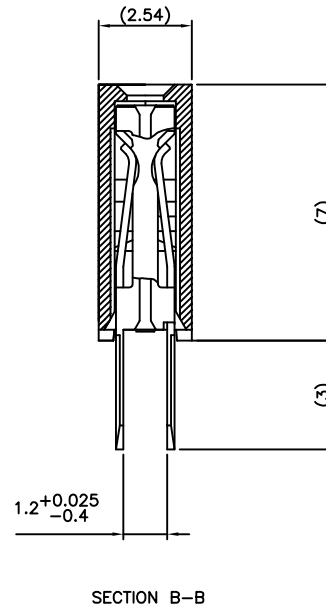
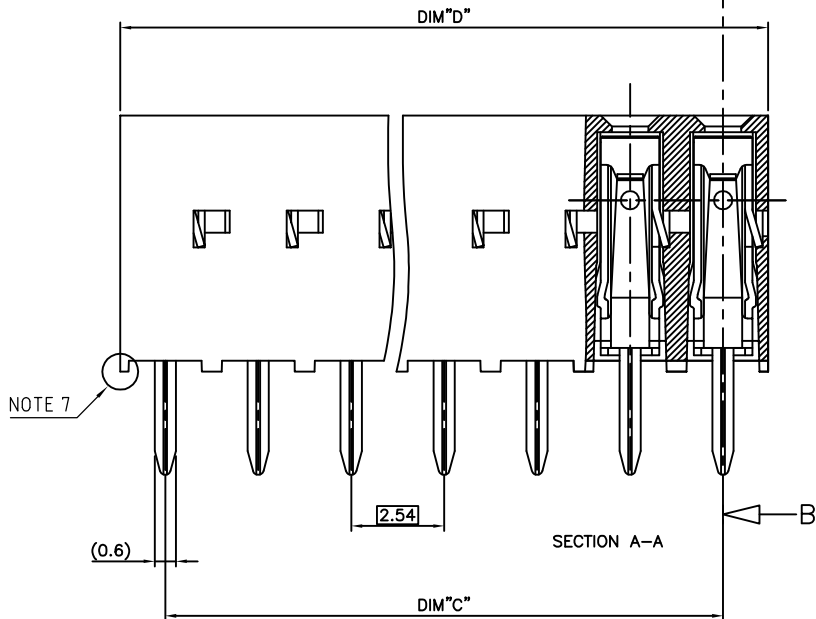
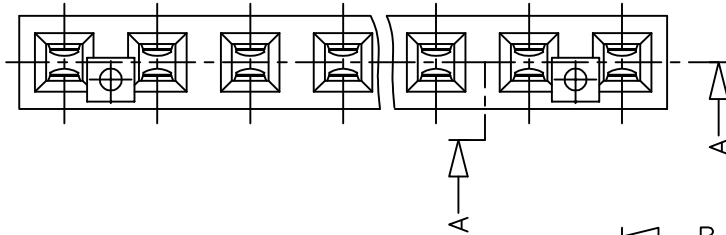


PRODUCT N°	DIM"C"	DIM"D"
95296-YXX(LF)	SEE TABLE SHEET 2/2	

WHEN NEEDED, SUFFIX LETTER "LF" INDICATES THE PRODUCT IS RoHS COMPATIBLE, SEE NOTE 6



NOTES:

- MATERIAL HOUSING: PCT HIGH TEMPERATURE 30% GLASS FILLED, COLOUR GREY. FLAME RETARDANT PER UL-94 CATEGORY VO.
- MATERIAL TERMINAL: PHOSPHOR BRONZE 3/4 HARD.
- RECOMMENDED PC BOARD THICKNESS FOR TROUGH MOUNT APPLICATION: 1.6 mm
- RECOMMENDED PC BOARD THICKNESS FOR STRADDLE MOUNT APPLICATION: 1.2 mm
- 95296-YXXLF

WHEN NEEDED, SUFFIX LETTER "LF" INDICATES THE PRODUCT IS RoHS COMPATIBLE, SEE NOTE 6
NB OF POSITIONS (SEE TABLE SHEET 2/2)
PLATING CODE

6 - RoHS COMPATIBLE PRODUCT SPECIFICATIONS

a - PLATING:

- "LF" MEANS THE PRODUCT IS LEAD-FREE, 2µm MINIMUM MATTE TIN OVER 1.27µm MINIMUM NICKEL UNDERPLATE.

b - MANUFACTURING PROCESS COMPATIBILITY

- THE HOUSING WILL WITHSTAND EXPOSURE TO 260°C ±5°C SOLDER BATH TEMPERATURE FOR 5 SECONDS IN A WAVE SOLDER APPLICATION WITH A 1.6mm MIN THICK CIRCUIT BOARD.

c - LABELING:

- MEETS PACKAGING SPECS AS PER GS-14-920

d - LEGAL STATEMENT: SEE GS-22-008

- END STAND-OFFS FOR 1x2 UP TO 1x5 POS
NO END STAND-OFFS FOR 1x6 UP TO 1x50 POS

95296-5XX	2 µm GOLD	SnPb
95296-3XX	0.76 µm GOLD	SnPb
PLATING CODE	CONTACT AREA	SOLDER TAIL
	PLATING THICKNESS OVER 1.27µm Ni	

95296-5XXLF	2 µm GOLD	Sn
95296-3XXLF	0.76 µm GOLD	Sn
PLATING CODE	CONTACT AREA	SOLDER TAIL
	PLATING THICKNESS OVER 1.27µm Ni	

mat'l. code		surface	tolerance	projection	product family
SEE NOTES		ISO 1902	ISO 406	ISO 101	DX VCC SR
ltr	ecn no	dr	date	tolerances unless otherwise specified	file
A	F70146	JLB	97.02.28	angles	DUAL ENTRY
B	F70425	PNZ	97.05.23	linear	DOUBLE TAIL
C	F03-028	DLE	03.10.08	±2°	scale 10:1
D	F04-034	DLE	04.11.17	dr	P.NIZZI
E	F06-020	DLE	06.06.29	engr	JM.PHAMVAN
F	F07-027	LMU	07.12.06	chr	P.NIZZI
G	F11-004	JCO	12.02.22	app	J.M.P
sheet	revision	G	D		
index	sheet	3	2		
FCJ					dwg no
					95296
					sheet 1 of 2 size
					A2
					type
					CUSTOMER Drawing

PRODUCT NUMBER	NUMBER OF POS.	DIM"C"	DIM"D"
95296-Y02(LF)	1 x 02	2.54/ .100	5.00/ .197
95296-Y03(LF)	1 x 03	5.08/ .200	7.54/ .297
95296-Y04(LF)	1 x 04	7.62/ .300	10.08/ .397
95296-Y05(LF)	1 x 05	10.16/ .400	12.62/ .497
95296-Y06(LF)	1 x 06	12.70/ .500	15.16/ .597
95296-Y07(LF)	1 x 07	15.24/ .600	17.70/ .697
95296-Y08(LF)	1 x 08	17.78/ .700	20.24/ .797
95296-Y09(LF)	1 x 09	20.32/ .800	22.78/ .897
95296-Y10(LF)	1 x 10	22.86/ .900	25.32/ .997
95296-Y11(LF)	1 x 11	25.40/1.000	27.86/1.097
95296-Y12(LF)	1 x 12	27.94/1.100	30.40/1.197
95296-Y13(LF)	1 x 13	30.48/1.200	32.94/1.297
95296-Y14(LF)	1 x 14	33.02/1.300	35.48/1.397
95296-Y15(LF)	1 x 15	35.56/1.400	38.02/1.497
95296-Y16(LF)	1 x 16	38.10/1.500	40.56/1.597
95296-Y17(LF)	1 x 17	40.64/1.600	43.10/1.697
95296-Y18(LF)	1 x 18	43.18/1.700	45.64/1.797
95296-Y19(LF)	1 x 19	45.72/1.800	48.18/1.897
95296-Y20(LF)	1 x 20	48.26/1.900	50.72/1.997
95296-Y21(LF)	1 x 21	50.80/2.000	53.26/2.097
95296-Y22(LF)	1 x 22	53.34/2.100	55.80/2.197
95296-Y23(LF)	1 x 23	55.88/2.200	58.34/2.297
95296-Y24(LF)	1 x 24	58.42/2.300	60.88/2.397
95296-Y25(LF)	1 x 25	60.96/2.400	63.42/2.497
95296-Y26(LF)	1 x 26	63.50/2.500	65.96/2.597
95296-Y27(LF)	1 x 27	66.04/2.600	68.50/2.697
95296-Y28(LF)	1 x 28	68.58/2.700	71.04/2.797
95296-Y29(LF)	1 x 29	71.12/2.800	73.58/2.897
95296-Y30(LF)	1 x 30	73.66/2.900	76.12/2.997

PRODUCT NUMBER	NUMBER OF POS.	DIM"C"	DIM"D"
95296-Y31(LF)	1 x 31	76.20/3.000	78.66/3.097
95296-Y32(LF)	1 x 32	78.74/3.100	81.20/3.197
95296-Y33(LF)	1 x 33	81.28/3.200	83.74/3.297
95296-Y34(LF)	1 x 34	83.82/3.300	86.28/3.397
95296-Y35(LF)	1 x 35	86.36/3.400	88.82/3.497
95296-Y36(LF)	1 x 36	88.90/3.500	91.36/3.597
95296-Y37(LF)	1 x 37	91.44/3.600	93.90/3.697
95296-Y38(LF)	1 x 38	93.98/3.700	96.44/3.797
95296-Y39(LF)	1 x 39	96.52/3.800	98.98/3.897
95296-Y40(LF)	1 x 40	99.06/3.900	101.52/3.997
95296-Y41(LF)	1 x 41	101.60/4.000	104.06/4.097
95296-Y42(LF)	1 x 42	104.14/4.100	106.60/4.197
95296-Y43(LF)	1 x 43	106.68/4.200	109.14/4.297
95296-Y44(LF)	1 x 44	109.22/4.300	111.68/4.397
95296-Y45(LF)	1 x 45	111.76/4.400	114.22/4.497
95296-Y46(LF)	1 x 46	114.30/4.500	116.76/4.597
95296-Y47(LF)	1 x 47	116.84/4.600	119.30/4.697
95296-Y48(LF)	1 x 48	119.38/4.700	121.84/4.797
95296-Y49(LF)	1 x 49	121.92/4.800	124.38/4.897
95296-Y50(LF)	1 x 50	124.46/4.900	126.92/4.997

FCI CONFIDENTIAL



This document is the property of and contains CONFIDENTIAL and PROPRIETARY information of FCI. No part of the information herein may be used in any way or disclosed to others without the written consent of FCI. Copyright © FCI.

mat'l. code		surface		tolerance		projection		product family	
SEE NOTES SHEET 1		ISO 1902		ISO 406 ISO 101				DX VCC SR	
ltr	ecm no	dr	date	tolerances unless otherwise specified		mm		title	
C	P04-0347	DLE	04.11.17	.0±.x				DUAL ENTRY	
D	P06-0214	DLE	06.06.29	angles	linear	.00±.0x		DOUBLE TAIL	
				0'±x'		scale N/A		dwg no	
		dr	P NIZZI	97.02.28				sheet 2 of 2 size	
		engr	JM PHAMVAN	97.02.28				95296 A2	
		chr	P NIZZI	97.02.28				type	
		app	JM.P	97.02.28				CUSTOMER Drawing	
sheet	revision								
index	sheet								

X-ON Electronics

Largest Supplier of Electrical and Electronic Components

Click to view similar products for [Headers & Wire Housings](#) category:

Click to view products by [Amphenol](#) manufacturer:

Other Similar products are found below :

[892-18-020-10-001101](#) [58102-G61-06LF](#) [582553-1](#) [0009485154](#) [009176003701906](#) [0050291907](#) [LY20-4P-DT1-P1E-BR](#) [02.125.8002.8](#)
[609-3404](#) [61062-3](#) [622-0430](#) [622-3653LF](#) [63453-116](#) [636-1030](#) [636-1427](#) [636-3427](#) [636-4007](#) [641938-9](#) [641991-4](#) [644827-2](#) [65817-010LF](#)
[65817-015LF](#) [65863-015LF](#) [66207-023LF](#) [67095-007LF](#) [67601157](#) [68648-049](#) [70.362.1628.0](#) [70-4210](#) [70-4226B](#) [70-4853B](#) [707-5020](#) [707-](#)
[5028](#) [71.350.2428.0](#) [71918-208LF](#) [71961-016LF](#) [733-134](#) [733-162](#) [754199-000](#) [760-3052](#) [787-8014-00](#) [79531-3000](#) [FCN-360C032-B](#) [FCN-](#)
[367T-T012/H](#) [FCN-723D010/2](#) [80.063.4001.1](#) [800-90-001-10-001000](#) [800-90-010-10-002000](#) [801-43-002-10-013000](#) [801-43-006-10-002000](#)