

953 Series ST Connectors

Amphenol's 953 Series fiber optic ST and ST II connectors utilize a bayonet style mating concept to provide a secure, robust coupling mechanism. The enclosed spiral slotted coupling nut allows easy insertion in densely packed patch panels.

The ST connector has been used extensively in telecom, data premise installation, and test lab applications. Special attention has been given to every ST performance parameter, increasing product repeatability and exceeding industry standards. The ST connector is available with a plastic or die cast body with a ceramic or stainless steel ferrule.



Features/Benefits

- The ST connector body and coupling nut are precision molded with a flame retardant polymer for a durable and light weight product
- The STII connector body and coupling nut are precision zinc die cast and nickel plated for superior strength and corrosion resistance
- High precision zirconia ferrules minimize insertion loss and return loss values
- Available in singlemode and multimode versions
- Available with 900 μ m, 2.0mm, or 3.0mm boots
- Stainless steel ferrules also available on both the ST and ST II connectors

Specifications

Insertion Loss: ≤ 0.15 dB typical, singlemode
 ≤ 0.35 dB typical, multimode

Return Loss: Ultra (UPC) ≤ -55 dB*

Durability: < 0.2 dB change, 500mating cycles

Temperature: < 0.3 dB change, -40 to +85°C

Intermateability:

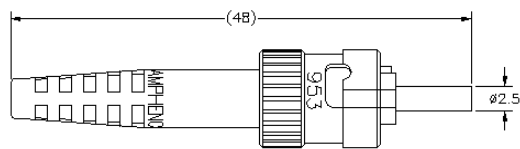
The Amphenol 953 Series ST Connectors are mechanically and optically intermateable with NTT-FC type products and conform to TIA/EIA and IEC specifications.

*Performance is polish dependent

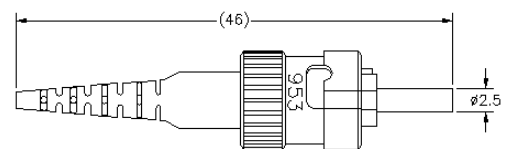
953 Series ST Connector Ordering Information*

| ST II Connectors with Ceramic Ferrules | | Ferrule Hole Size | Body and Nut Material | Recommended Cable Diameter | Boot Color |
|---|---|-------------------|-----------------------|----------------------------|------------|
| Part # | Description | | | | |
| 953-101-5306-P | ST II Connector, Singlemode, 126µm Zirconia Ferrule | 126µm | Die-cast | 3mm or 900µm | Black |
| 953-101-5310-P | ST II Connector, Multimode, 128µm Zirconia Ferrule | 128µm | Die-cast | 3mm or 900µm | Black |
| 953-101-5316-P | ST II Connector, Singlemode, 126µm Zirconia Ferrule | 126µm | Die-cast | 2mm | Black |
| 953-101-5309-P | ST II Connector, Multimode, 128µm Zirconia Ferrule | 128µm | Die-cast | 2mm | Black |
| ST II Connectors with Stainless Steel Ferrules | | | | | |
| Part # | Description | Ferrule Hole Size | Body and Nut Material | Recommended Cable Diameter | Boot Color |
| 953-106-50128-P | ST II Connector, Multimode, 128µm Stainless Steel Ferrule | 128µm | Die-cast | 3mm or 900µm | Black |
| 953-106-50144-P | ST II Connector, Multimode, 144µm Stainless Steel Ferrule | 144µm | Die-cast | 3mm or 900µm | Black |
| 953-106-50231-P | ST II Connector, Multimode, 231µm Stainless Steel Ferrule | 231µm | Die-cast | 3mm or 900µm | Black |
| ST Connectors with Ceramic Ferrules | | | | | |
| Part # | Description | Ferrule Hole Size | Body and Nut Material | Recommended Cable Diameter | Boot Color |
| 953-101-5006-P | ST Connector, Singlemode, 126µm Zirconia Ferrule | 126µm | Plastic | 3mm or 900µm | Black |
| 953-101-5010-P | ST Connector, Multimode, 128µm Zirconia Ferrule | 128µm | Plastic | 3mm or 900µm | Black |
| ST Connectors with Stainless Steel Ferrules | | | | | |
| Part # | Description | Ferrule Hole Size | Body and Nut Material | Recommended Cable Diameter | Boot Color |
| 953-107-50128-P | ST Connector, Multimode, 128µm Stainless Steel Ferrule | 128µm | Plastic | 3mm or 900µm | Black |
| 953-107-50144-P | ST Connector, Multimode, 144µm Stainless Steel Ferrule | 144µm | Plastic | 3mm or 900µm | Black |
| 953-107-50231-P | ST Connector, Multimode, 231µm Stainless Steel Ferrule | 231µm | Plastic | 3mm or 900µm | Black |

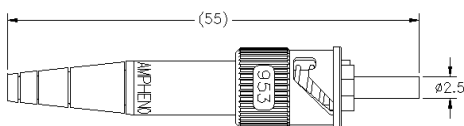
* Please contact Amphenol for other configurations and custom hole sizes for the stainless steel ferrules.



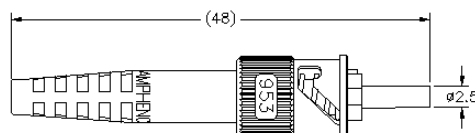
ST Connector with 3.0mm Boot



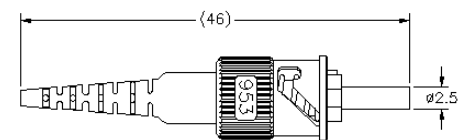
ST Connector with 900µm Boot



ST II Connector with 2.0mm Boot



ST II Connector with 3.0mm Boot

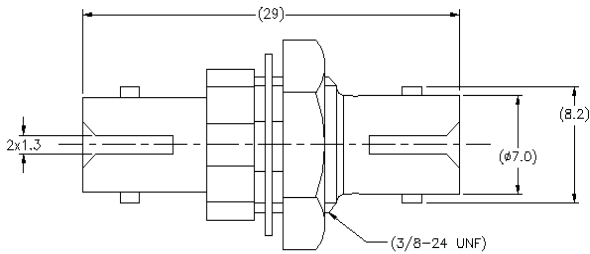


ST II Connector with 900µm Boot

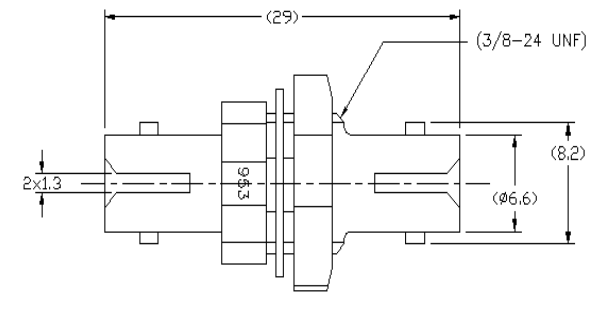
ST Adapters

| ST Adapters | | Alignment Sleeve Material | Flange Type | Body |
|--------------------|--|---------------------------|----------------------|--------------------|
| Part # | Description | | | |
| 953-120-5000 | ST adapter, plastic body, singlemode, D-hole | Zirconia | Feed-through, D-hole | Black Plastic |
| 953-120-5003 | ST adapter, metal body, singlemode, D-hole | Zirconia | Feed-through, D-hole | Metal |
| 953-122-5000 | ST adapter, plastic body, multimode, D-hole | Phosphor Bronze | Feed-through, D-hole | Beige Plastic |
| 953-122-5003 | ST adapter, metal body, multimode, D-hole | Phosphor Bronze | Feed-through, D-hole | Metal |
| ST Hybrid Adapters | | Alignment Sleeve Material | Flange Type | Color |
| Part # | Description | | | |
| 954-953-5000 | SC-ST hybrid simplex adapter, singlemode | Zirconia | Screw mount | Blue/Black Plastic |
| 954-953-5001 | SC-ST hybrid simplex adapter, multimode | Phosphor Bronze | Screw mount | Blue/Black Plastic |
| ST Accessories | | | | |
| Part # | Description | | | |
| 953-1061 | ST dust cap with chain, 0.130" diameter ring | | | |
| 953-1079 | ST dust cap with chain, 0.380" diameter ring | | | |

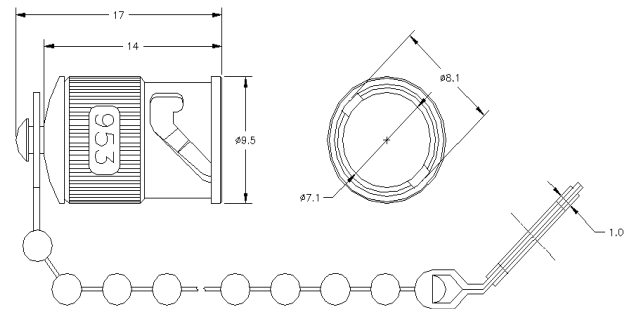
* Please contact Amphenol for other configurations.



ST Plastic Adapter, Feed-through, D-Hole



ST Metal Adapter, Feed-through, D-Hole



ST Dust Cap with Chain (953-1061)

X-ON Electronics

Largest Supplier of Electrical and Electronic Components

Click to view similar products for [Fibre Optic Connectors](#) category:

Click to view products by [Amphenol](#) manufacturer:

Other Similar products are found below :

[0004700001](#) [6100-R](#) [6313](#) [F709722200](#) [F709730000](#) [F718183204](#) [F727403500](#) [F727752800](#) [8119](#) [9440F20-27S-190](#) [944-120-6001](#)
[9441F10SL-3S](#) [9444W28-21S](#) [9444W36-10S](#) [9446W20-16S](#) [953-101-5310-P](#) [954-101-57202B](#) [A0270169](#) [12-9122](#) [12-5702](#) [AX101713](#)
[AX102420](#) [AX103923](#) [AX104024](#) [AX104193](#) [AX104230](#) [AX104562](#) [AX105203-B25](#) [AX105205-S1](#) [EHSC2M](#) [17-300800](#) [181-011-126](#)
[181-011-S](#) [181-057-126](#) [NKSOPBUY](#) [20500002116](#) [2064996-1](#) [20800001065](#) [2170](#) [9132](#) [2612](#) [2620](#) [9291](#) [9440F16-10S](#) [9440F20-18S](#)
[9444W32-73S](#) [9446F16-10S-190](#) [953-106-50231](#) [953-120-5003](#) [955-120-5110](#)