

4

3

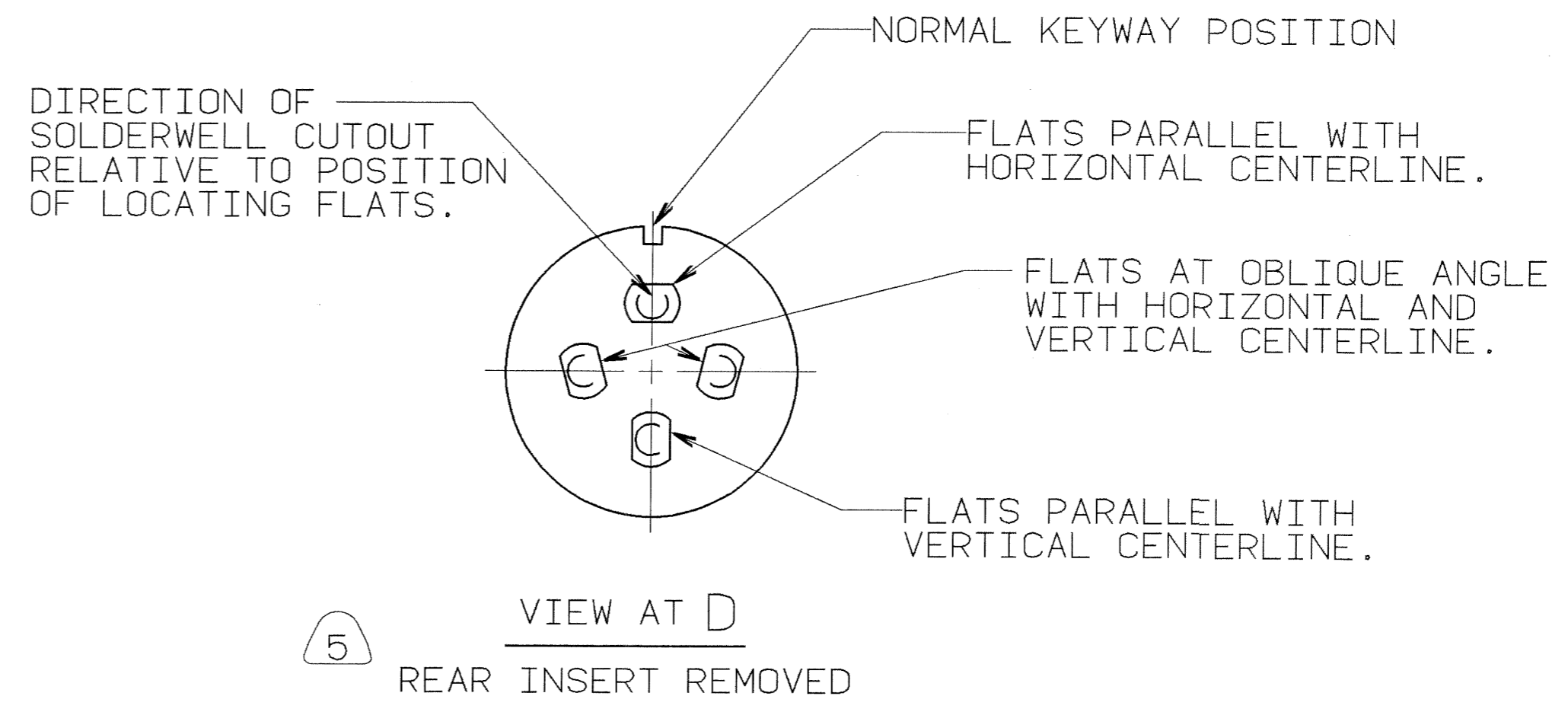
2

1

BCO ASSEMBLY NUMBER	AMPHENOL ASSEMBLY NUMBER	A DIA	B	C	INSERT ARRANGEMENT
		+ .000 - .005	+ .020 - .025	+ .020 - .025	
10-825800-()	97- 8S -()	.283	.310	.865	L-22208-()
10-825801-()	-10S -()	.355			L-22210-()
10-825802-()	-10SL-()	.502			L-22211-()
10-825803-()	-12S -()	.518			L-22212-()
10-825804-()	-12SL-()	.605			L-22202-()
10-825805-()	-12 -()	.518	.525	1.270	L-22213-()
10-825806-()	-14S -()	.583	.310	.865	L-22214-()
10-825807-()	-14 -()	.583	.525	1.270	L-22215-()
10-825808-()	-16S -()	.697	.310	.865	L-22216-()
10-825809-()	-16 -()	.697	.525	1.270	L-22217-()
10-825810-()	-18 -()	.825			L-22218-()
10-825811-()	-20 -()	.970			L-22220-()
10-825812-()	-22 -()	1.073			L-22222-()
10-825813-()	-24 -()	1.205			L-22224-()
10-825814-()	-28 -()	1.428			L-22228-()
10-825815-()	-32 -()	1.687	.587	1.332	L-22232-()
10-825816-()	-36 -()	1.885	.587	1.332	L-22236-()
10-825817-()	-40 -()	2.115	.587	1.332	L-22240-()

10-825818/819 NOT AVAILABLE

REVISIONS				
ZONE	LTR	DESCRIPTION	DATE	APPROVED
	B	(CLII) SEE CHANGE NOTICE ECN:78800-172	07/08/88 CODINGTON	Hesbit P



SEE INDIVIDUAL DRAWINGS

10-825800-IP	10-825806-AGP	10-825813-ABP
10-825801-2P	10-825806-4P	10-825813-20P
10-825802-ADP	10-825808-AAP	10-825813-22P
10-825802-AEP	10-825808-3P	10-825816-ABP
10-825803-AAP	10-825808-4P	10-825816-ABS
10-825803-ABP	10-825808-6P	
10-825803-ADP	10-825809-11P	
10-825803-4P	10-825810-AAS	
10-825803-6P	10-825810-AAP	
10-825804-AAP	10-825810-5P	
10-825805-5P	10-825810-9P	
10-825806-AAP	10-825810-16P	
10-825806-ABP	10-825810-16S	
10-825806-ACP	10-825810-29P	
10-825806-AFP	10-825811-13S	

- FOR INSERT ARRANGEMENT DATA AND ALTERNATE INSERT POSITIONS, L-22202-() THRU L-22240-().
- TO COMPLETE ASSEMBLY NUMBER, ADD APPLICABLE INSERT ARRANGEMENT SUFFIX AND INSERT POSITION LETTER TO BASE NUMBERS LISTED ABOVE.
CONTACT INSERT POSITION
STYLE NORMAL W X Y Z
PIN P G I K M
SOCKET S H J L N
- TO COMPLETE INSERT ARRANGEMENT NUMBER, ADD APPLICABLE INSERT ARRANGEMENT SUFFIX TO BASE NUMBERS LISTED ABOVE.
- ASSEMBLIES CONTAINING CONTACT SIZES 0, 4, 8 & 12 SHALL HAVE CONTACTS ASSEMBLED WITH SOLDERWELL CUTOUTS FACING THE DIRECTION INDICATED RELATIVE TO POSITION OF LOCKING FLATS.

NOTES:
1. INSERTS ARE TO BE HELD TOGETHER WITH TAPE.
THE USE OF THIS DOCUMENT IS UNLIMITED. HOWEVER, DOCUMENTS REFERENCED HEREON MAY CONTAIN LIMITED RIGHTS DATA.

UNLESS OTHERWISE SPECIFIED LINEAR DIMENSIONS ARE IN INCHES.
TOLERANCES: .XXX±.010,
.XX ±.03, .X ±.1,
ANGLES ±2°.
OTHER STANDARDS PER 9-3800 AND DOD-D-1000.
NOTE REF. = (XX)

FIND NO.	QTY REQD.	FSCM NO.	PART NUMBER	DESCRIPTION	NOTE REF.
3			SEE PARTS LIST	CONTACT	
2	1		10-825820/39-()P	PIN INSERT, FRONT	
2	1		10-825820/39-()S		OR SOCKET INSERT, FRONT
1	1		10-825840/59-()P	PIN INSERT, REAR	
1	1		10-825840/59-()S		OR SOCKET INSERT, REAR

SPECIFICATIONS	SIGNATURES	DATES	AMPHENOL CORPORATION BENDIX CONNECTOR OPERATIONS SIDNEY, N.Y.		
MATERIAL SPEC. N/A	PREPARED CODINGTON	9/25/87	INSERT AND CONTACT ASSEMBLY, 97 SERIES		
	CHECKED CARR	10/20/87			
PROCESS SPEC. N/A	APPROVED CARR	10/20/87	SIZE	FSCM NO.	
	APPROVED HAYNER	10/20/87	C	77820	10-825800/819
	1ST PART NO.		SCALE	NONE	WT.
			REF	N/A	SHEET N/A

10-825800/819

X-ON Electronics

Largest Supplier of Electrical and Electronic Components

Click to view similar products for [Circular MIL Spec Tools, Hardware & Accessories](#) *category:*

Click to view products by [Amphenol](#) *manufacturer:*

Other Similar products are found below :

[0113-201-2025](#) [600-079-06](#) [600-146-06](#) [M10-101983-183](#) [M10-454396-008](#) [602GB18808](#) [CS3102A-22-14PW](#) [M2887615-CD](#) [627-009](#)
[M38999/9-19B](#) [630A007NF083A](#) [630B007M051A](#) [630BJ003NF032H](#) [637-149NF04B](#) [M39029/29-215](#) [6408-203V-09273](#) [6426-201-11343](#)
[650FS002NF16](#) [660-008NF14S7-01](#) [660-009M22H8-03](#) [660-013NF19U6-210](#) [660-015M10S6-17](#) [660-015NF10S5-01](#) [660-015NF14R3.5-01](#)
[660-023NF19H6-19](#) [660-024NF11S12-01](#) [660-024NF11S3-01](#) [660-024NF17S4-109](#) [660-050XM17F4-01](#) [660-068NF25R6-30G](#) [660-](#)
[070M23S8-04](#) [660-073MTCH9-20](#) [M83723/61-18W](#) [M83723/61-218R](#) [M83723/61-224W](#) [667-084-23C](#) [667-084-35C](#) [667-224NF16](#) [687-](#)
[697NF-1](#) [M85049/94-10-A](#) [M85049/96-7-A](#) [M855282-10A01A](#) [M85528/2-10B](#) [M855282-18A01A](#) [M85528/2-22A01A](#) [M85528/2-22AA](#)
[710HS460NF2508](#) [780-001-22G12-SK](#) [780-002-19G12-SK](#) [780-002-20G12SK](#)