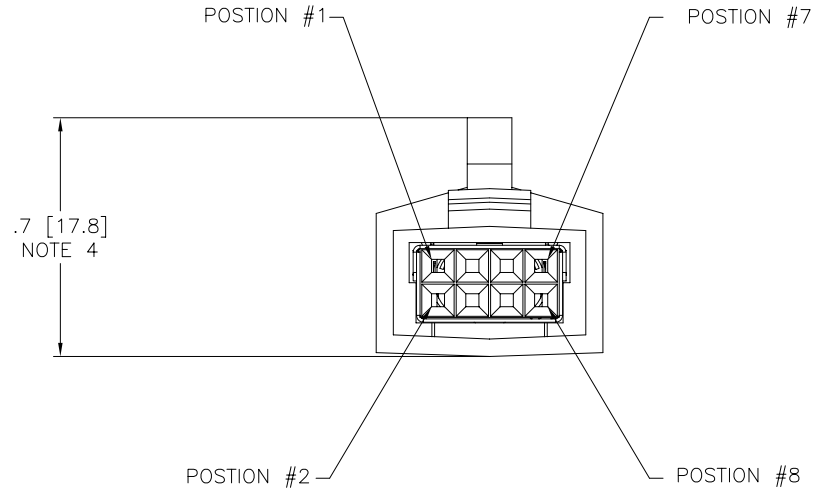
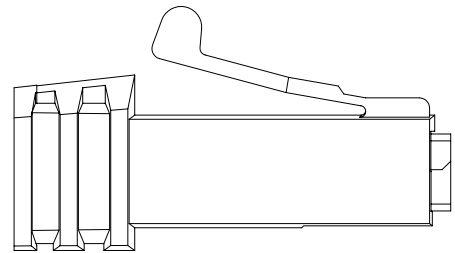
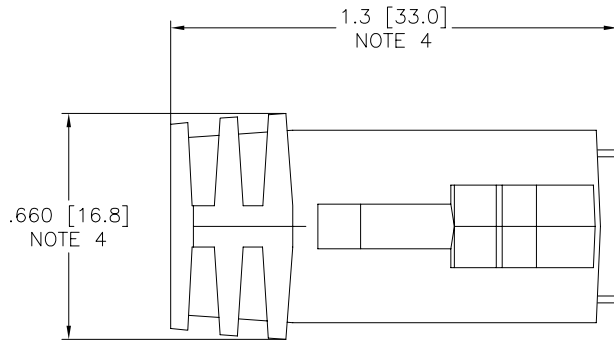


PRODUCT NO.
SEE SHT. 2



FCIconnect.com

Copyright FCI

mat'l. code				surface ISO 1302	tolerance ISO 406 ISO 1101	projection 	product family LATCH-N-LOK	
ltr	ecn no	dr	date	tolerances unless otherwise specified		INCH/MM	title	
A	V90622	CGC	3/4/99	angles	linear		2X4 LNL 360° SHIELDED PLUG CONN. KIT W/O PV'S	
B	V91818	RGD	8/12/99	0°±2'	.XX±.01/.3 .XXX±.005/.13 .XXXX±.0020/.051	scale 2:1	sheet 1 of 3 size	
C	V92065	RGD	11/2/99				98028 A3	
D	V01093	TFG	7/6/00	dr	M.HERNANDEZ	sheet 1 of 3 size		
E	M04-0229	MHT	12/03/04	enr	M. BARRIOS	98028 A3		
F	M06-0365	AGS	9/21/06	chr	M. BARRIOS	type Product Customer Drawing		
sheet index		revision sheet	F 1	F 2	F 3			

form: A3

98028-WXYZLF

Z key position

1	POSITION 1
2	POSITION 2
3	NO KEY

XY color

01	LT. GRAY	---	---	---	obs
02	OFF WHITE				
03	DK. GRAY	---	---	---	obs
04	BLACK				
05	SLATE GRAY	---	---	---	obs
06	D. GRAY	---	---	---	obs
07	SILVER GRAY				
08	PEARL WHITE	---	---	---	obs
09	PEBBLE GRAY				

W cable o.d.

7	.250/6.35
8	.280/7.11

EXAMPLE

98028-7013LF: IS A 2X4 REAR EXIT PLUG IN LIGHT GRAY WITH A CABLE EXIT HOLE SIZE OF .250[6.35] CABLE RANGE, WITH NO KEYING OPTION.



Copyright FCI

mat'l. code		surface ISO 1302 <input checked="" type="checkbox"/>		tolerance ISO 406 ISO 1101		projection 		product family LATCH-N-LOK		
ltr	ecn	no	dr	date	tolerances unless otherwise specified		title		2X4 LNL 360° SHIELDED PLUG CONN. KIT W/O PV'S	
F					angles	linear	.XX±.01/.3	INCH/MM		scale 2:1
					0'±2'		.xxx±.005/.13			
							.xxx±.0020/.051			
			dr	M.HERNANDEZ	12/03/04			FCI		dwg no
			enr	M. BARRIOS	12/03/04					sheet 2 of 3
			chr	M. BARRIOS	12/03/04					size
			app	M. BARRIOS	12/03/04					A3
sheet index		revision sheet								type
										Product Customer Drawing

1

2 3

4

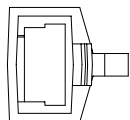
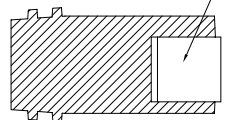
5

6

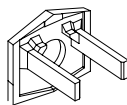
VIEWS OF BOTTOM OF PLUG

KEY POSITION 1

SHIELD CAN



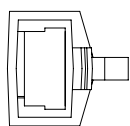
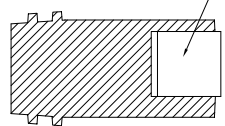
REAR CAP



MATES WITH P/N 74355-XXX1
MATES WITH P/N 87316-XXX1

KEY POSITION 2

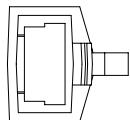
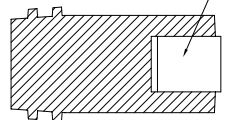
SHIELD CAN



MATES WITH P/N 74355-XXX2
MATES WITH P/N 87316-XXX2

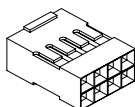
NO KEY

SHIELD CAN

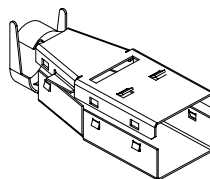


MATES WITH P/N 74355-XXX
MATES WITH P/N 87316-XXX

MINI LATCH HOUSING

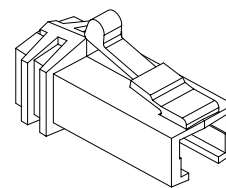


TOP SHIELD



BOTTOM SHIELD

PLUG FRONT



NOTES:

- EACH KIT CONTAINS ONE OF EACH OF THE FOLLOWING COMPONENTS
LATCH -N- LOK PLUG
LATCH -N- LOK END CAP
MINI LATCH HOUSING
360° SHIELD CANS.
- COMPONENTS ARE BULK PACKAGED WITH 100 pcs. OF A COMPONENT PER BAG. PV'S MUST BE ORDERED SEPERATELY.
- MATERIALS USED: PLUGS AND CAPS ARE MOLDED IN POLYCARBONATE. THE MINI LATCH HOUSINGS ARE MOLDED IN NYLON. COLOR IS BLACK. THE SHIELD CAN IS 3/4 HARD BRASS PLATED WITH 2.5um MIN. BRIGHT TIN. 1.0um MIN. NICKEL UNDERPLATE.
- DIMENSIONS ARE APPROXIMATE AND REFLECT PLUG IN UNLATCHED STATE.
- PART NUMBERS WITH LF IN THE END ARE LEAD FREE.
- THIS PRODUCT MEETS EUROPEAN UNION DIRECTIVES AND OTHER COUNTRY REGULATION AS DESCRIBED IN GS-22-008.

mat'l. code		surface ISO 1302 ✓		tolerance ISO 406 ISO 1101		projection ⊕		product family LATCH-N-LOK	
ltr	ecn	no	dr	date		tolerances unless otherwise specified		title	
F						angles	linear	2X4 LNL 360° SHIELDED PLUG CONN. KIT W/O PV'S	
						0°±2'	.XX±.01/.3 .xxx±.005/.13 .xxxx±.0020/.051	INCH/MM scale 2:1	
						dr	M.HERNANDEZ	12/03/04	
						enrg	M. BARRIOS	12/03/04	
						chr	M. BARRIOS	12/03/04	
						appd	M. BARRIOS	12/03/04	
sheet index		revision sheet						FCJ	
								dwg no 98028 sheet 3 of 3 size A3	
								type Product Customer Drawing	

X-ON Electronics

Largest Supplier of Electrical and Electronic Components

Click to view similar products for [Headers & Wire Housings](#) category:

Click to view products by [Amphenol](#) manufacturer:

Other Similar products are found below :

[892-18-020-10-001101](#) [58102-G61-06LF](#) [582553-1](#) [0009485154](#) [009176003701906](#) [0050291907](#) [LY20-4P-DT1-P1E-BR](#) [02.125.8002.8](#)
[609-3404](#) [61062-3](#) [622-0430](#) [622-3653LF](#) [63453-116](#) [636-1030](#) [636-1427](#) [636-3427](#) [636-4007](#) [641938-9](#) [641991-4](#) [644827-2](#) [65817-010LF](#)
[65817-015LF](#) [65863-015LF](#) [66207-023LF](#) [67095-007LF](#) [67601157](#) [68648-049](#) [70.362.1628.0](#) [70-4210](#) [70-4226B](#) [70-4853B](#) [707-5020](#) [707-](#)
[5028](#) [71.350.2428.0](#) [71918-208LF](#) [71961-016LF](#) [733-134](#) [733-162](#) [754199-000](#) [760-3052](#) [787-8014-00](#) [79531-3000](#) [FCN-360C032-B](#) [FCN-](#)
[367T-T012/H](#) [FCN-723D010/2](#) [80.063.4001.1](#) [800-90-001-10-001000](#) [800-90-010-10-002000](#) [801-43-002-10-013000](#) [801-43-006-10-002000](#)