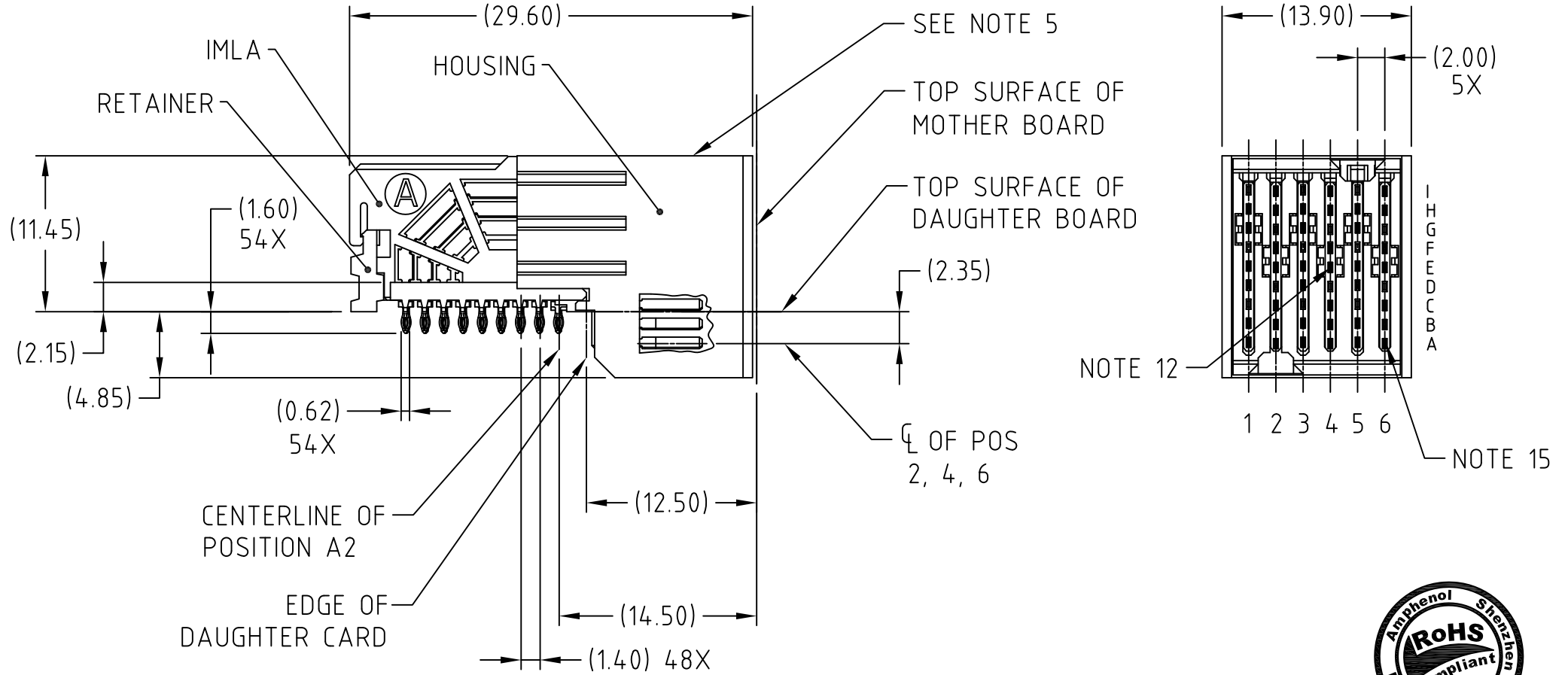


This document is the property of Amphenol Corporation and is delivered on the express condition that it is not to be disclosed, reproduced or used, in whole or in part, for manufacture or sale by anyone other than Amphenol Corporation without its prior consent, & that no right is granted to disclose or to use any information in this document.

CUSTOMER DRAWING

REVISIONS				
SYM	ECN	DESCRIPTION	DATE	APPROVED
1	HK6577	RELEASE FOR CUSTOMER	10/18/11	Charles

ORDERING PN SEE TABLE 1, SHEET 5



SEE TABLE 1, SHEET 5



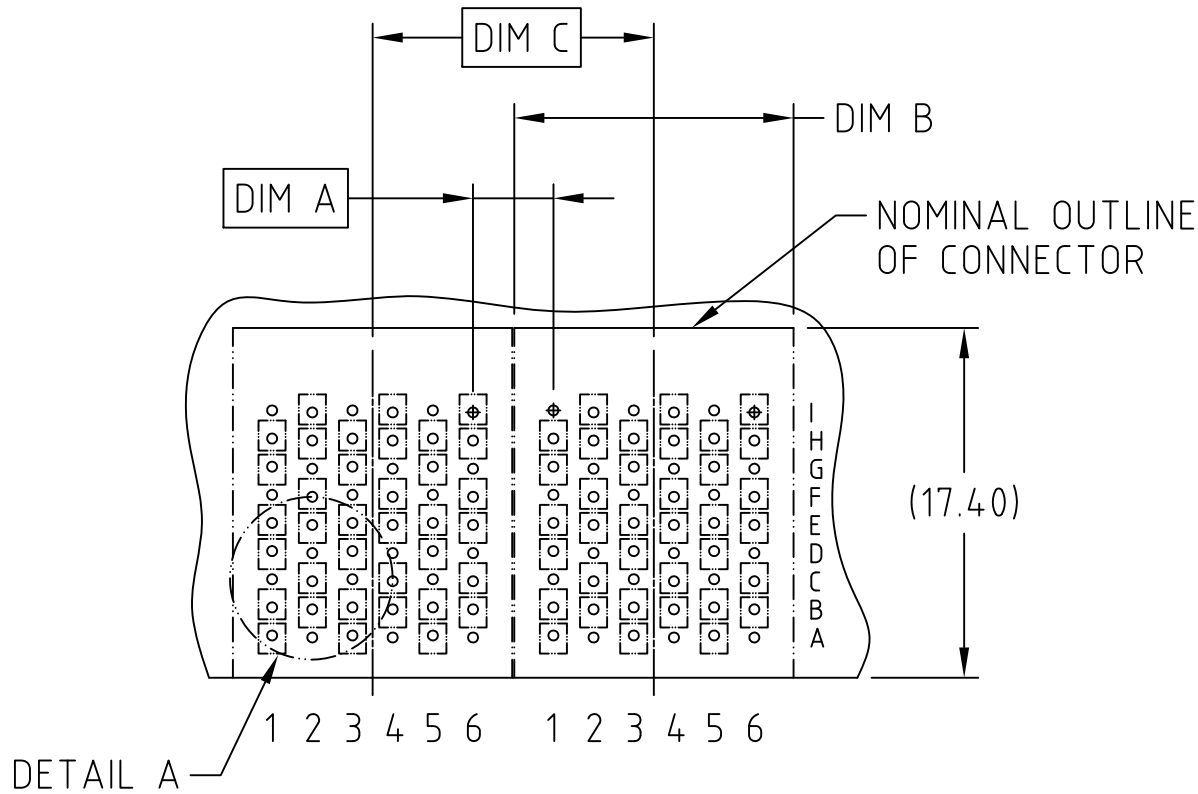
UNLESS OTHERWISE SPECIFIED TOLERANCES U.S. METRIC .X +/- 0.3 .XX +/- 0.2 .XXX +/- FRACTIONS +/- ANGLES +/- 2° FOR MATERIALS AND FINISHES SEE NOTES REMOVE SHARP EDGES DIMENSIONS — U.S. — — INCHES — — METRIC — — (MM) —	APPROVAL DRAWN Johnny 10/18/11 CHECKED Charles 10/18/11 CHECKED	DATE 10/18/11	Amphenol TITLE AirMax VS RA HEADER ASSY PRESS-FIT, 54 PDS, 14MM SIZE DRAWING NO. REV. A3 C AA2300610Y 1 SCALE 1:1 SHEET 1 OF 5
	DRAWING FILE : DRAWING\AMX\C AA2300610Y		
	ANGLE OF PROJECTION 		

This document is the property of Amphenol Corporation and is delivered on the express condition that it is not to be disclosed, reproduced or used, in whole or in part, for manufacture or sale by anyone other than Amphenol Corporation without its prior consent, & that no right is granted to disclose or to use any information in this document.

# CUSTOMER DRAWING

REVISIONS				
SYM	ECN	DESCRIPTION	DATE	APPROVED
		SEE SHEET 1		

DESCRIPTION	DIM A	DIM B	DIM C
2-14MM MODULES PLACED END-TO-END	4.00	13.90 2X	14.00
1-12MM MODULE & 1-14MM MODULE PLACED END-TO-END	3.00	11.90 1X & 13.90 1X	13.00



RECOMMENDED PCB LAYOUT  
FOR DIFFERENTIAL APPLICATIONS  
COMPONENT SIDE  
(TWO ADJACENT FOOTPRINTS SHOWN)  
NOTES 6 & 7



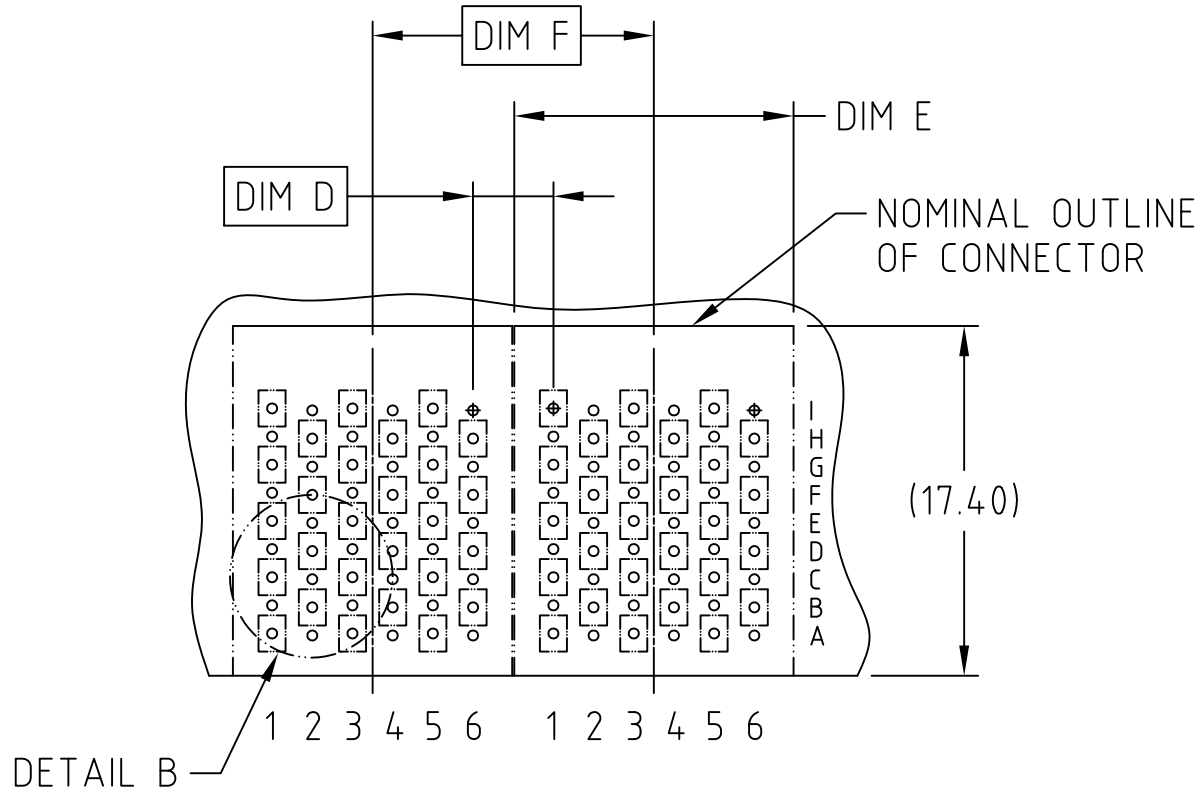
UNLESS OTHERWISE SPECIFIED TOLERANCES	U.S.	METRIC	APPROVAL	DATE	Amphenol
	.X +/-	0.2		DRAWN Johnny	
.XX +/-	0.1	CHECKED Charles	10/18/11		
.XXX +/-	0.05	CHECKED			
FRACTIONS +/-			DRAWING FILE :		TITLE
ANGLES +/-	2°		DRAWING\AMX\C AA2300610Y		AirMax VS RA HEADER ASSY PRESS-FIT, 54 PDS, 14MM
FUR MATERIALS AND FINISHES SEE NOTES			ANGLE OF PROJECTION		SIZE
REMOVE SHARP EDGES					DRAWING NO.
DIMENSIONS				A3	C AA2300610Y
— U.S. —	— INCHES —				1
(METRIC)	(MM)		SCALE	1:1	SHEET 2 OF 5

This document is the property of Amphenol Corporation and is delivered on the express condition that it is not to be disclosed, reproduced or used, in whole or in part, for manufacture or sale by anyone other than Amphenol Corporation without its prior consent, & that no right is granted to disclose or to use any information in this document.

# CUSTOMER DRAWING

REVISIONS				
SYM	ECN	DESCRIPTION	DATE	APPROVED
		SEE SHEET 1		

DESCRIPTION	DIM D	DIM E	DIM F
2-14MM MODULES PLACED END-TO-END	4.00	13.90 2X	14.00
1-12MM MODULE & 1-14MM MODULE PLACED END-TO-END	3.00	11.90 1X & 13.90 1X	13.00



RECOMMENDED PCB LAYOUT  
FOR SINGLE ENDED APPLICATIONS  
COMPONENT SIDE  
(TWO ADJACENT FOOTPRINTS SHOWN)  
NOTES 6 & 7

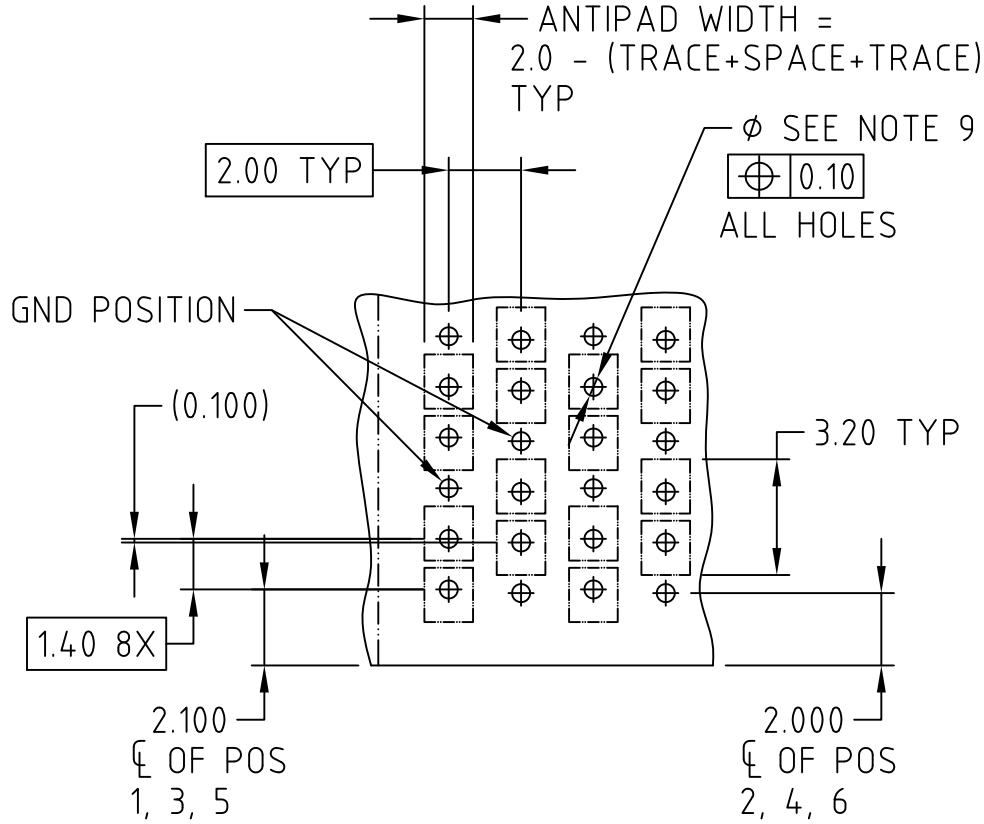
UNLESS OTHERWISE SPECIFIED TOLERANCES	U.S.	METRIC
	.X +/-	0.2
	.XX +/-	0.1
	.XXX +/-	0.05
	FRACTIONS +/-	
	ANGLES +/-	2°
FUR MATERIALS AND FINISHES SEE NOTES	DRAWING FILE : DRAWING\AMX\C AA2300610Y	
REMOVE SHARP EDGES	ANGLE OF PROJECTION	
DIMENSIONS		
— U.S. —	— INCHES —	
(METRIC)	(MM)	

APPROVAL	DATE	Amphenol
DRAWN Johnny	10/18/11	
CHECKED Charles	10/18/11	
CHECKED		
DRAWING FILE :		TITLE
DRAWING\AMX\C AA2300610Y		AirMax VS RA HEADER ASSY PRESS-FIT, 54 PDS, 14MM
SIZE	DRAWING NO.	REV.
A3	C AA2300610Y	1
SCALE	1:1	SHEET 3 OF 5

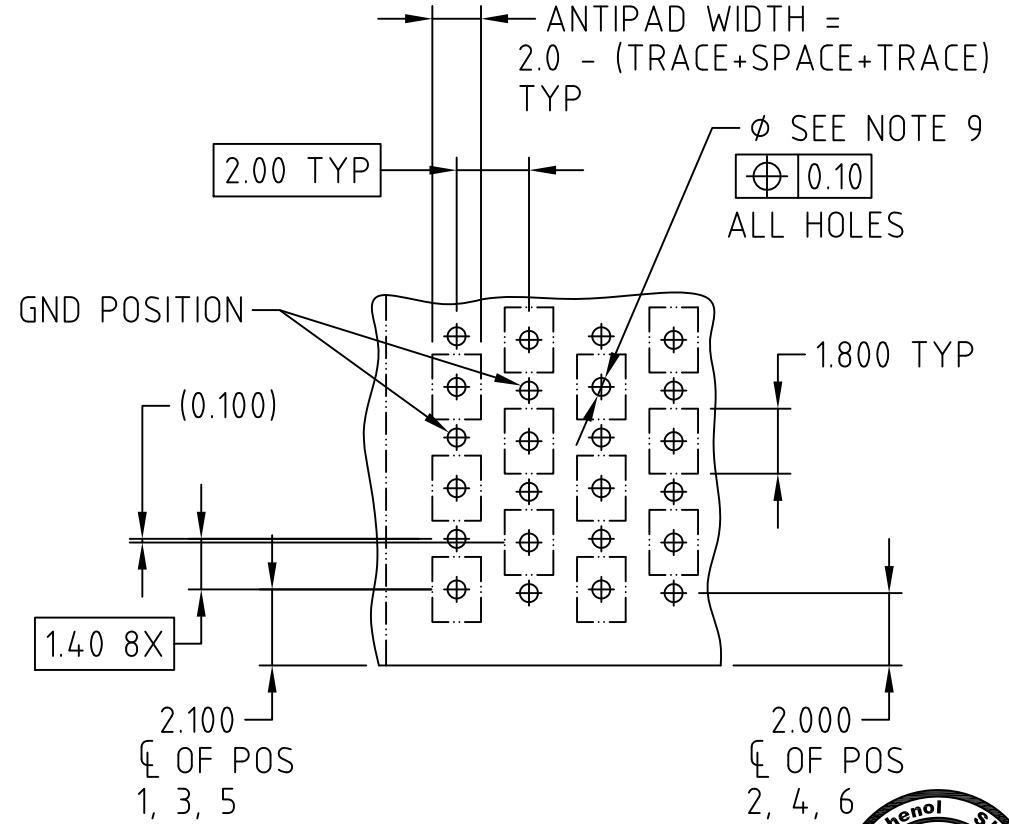
This document is the property of Amphenol Corporation and is delivered on the express condition that it is not to be disclosed, reproduced or used, in whole or in part, for manufacture or sale by anyone other than Amphenol Corporation without its prior consent, & that no right is granted to disclose or to use any information in this document.

CUSTOMER DRAWING

REVISIONS				
SYM	ECN	DESCRIPTION	DATE	APPROVED
		SEE SHEET 1		



DETAIL A  
SCALE 2:1



DETAIL B  
SCALE 2:1



UNLESS OTHERWISE SPECIFIED TOLERANCES	
U.S.	METRIC
.X +/-	0.2
.XX +/-	0.1
.XXX +/-	0.05
FRACTIONS +/-	
ANGLES +/-	2°
FOR MATERIALS AND FINISHES SEE NOTES	
REMOVE SHARP EDGES	
DIMENSIONS	
— U.S. —	— INCHES —
(METRIC)	(MM)

APPROVAL	DATE
DRAWN Johnny	10/18/11
CHECKED Charles	10/18/11
CHECKED	
DRAWING FILE :	
DRAWING\AMK\AA2300610Y	
ANGLE OF PROJECTION	

Amphenol		
TITLE		
AirMax VS RA HEADER ASSY PRESS-FIT, 54 PDS, 14MM		
SIZE	DRAWING NO.	REV.
A3	C AA2300610Y	1
SCALE	1:1	SHEET 4 OF 5

This document is the property of Amphenol Corporation and is delivered on the express condition that it is not to be disclosed, reproduced or used, in whole or in part, for manufacture or sale by anyone other than Amphenol Corporation without its prior consent, & that no right is granted to disclose or to use any information in this document.

# CUSTOMER DRAWING

REVISIONS				
SYM	ECN	DESCRIPTION	DATE	APPROVED
		SEE SHEET 1		

## NOTES:

- CONNECTOR MATERIALS:  
HOUSING AND RETAINER: HIGH TEMP THERMOPLASTIC,NATURAL,UL94V-0  
IMLA PLASTIC: HIGH TEMP THERMOPLASTIC,BLACK UL94V-0  
CONTACT: COPPER ALLOY
- CONTACT PLATING:  
SEPARABLE INTERFACE: PERFORMANCE-BASED PLATING, QUALIFIED TO MEET THE REQUIREMENTS OF AMPHENOL PRODUCT SPECIFICATION S-AMX-001, INCLUDING TELCORDIA GR-1217-CORE(NOVEMBER 1995) CENTRAL OFFICE TEST SEQUENCE.  
PRESS-FIT TAILS: TIN OVER NICKEL (LEAD FREE)
- PRODUCT SPECIFICATION: S-AMX-01
- APPLICATION SPECIFICATION: S-AMX-002.
- PRODUCT MARKING, (PART NUMBER & LOT CODE), ON THIS SURFACE
- REFER TO CUSTOMER DRAWING C AMX-PCB-001 FOR INFORMATION REGARDING PCB LAYOUT OF POWER AND GUIDE MODULES RELATIVE TO SIGNAL MODULES
- POSITIONS F OF ODD NUMBERED COLUMNS AND POSITIONS G OF EVEN NUMBERED COLUMNS CORRESPOND TO EARLY MATE HEADER PINS
- THERE IS NO GROUND BUSSING WITHIN THE CONNECTOR SYSTEM
- REFER TO CUSTOMER DRAWING C AMX-PCB-002 FOR INFORMATION ON PCB HOLE
- THIS PRODUCT MEETS EUROPEAN UNION DIRECTIVES AND OTHER COUNTRY REGULATIONS.
- THE HOUSING SHOULD WITHSTAND EXPOSURE TO 260°C PEAK TEMPERATURE FOR 40 SECONDS IN A CONVECTION, INFRA-RED OR VAPOR PHASE REFLOW OVEN.
- ONLY FOR P/N: AA23006101, MATING PIN E4 HAS 0.5MM LESS NOMINAL WIPE THAN THE SHORTEST SIGNAL PIN.
- PACKAGE SPECIFICATION: PKS-AMX-001
- MATERIAL SHOULD BE FULFILLED AMPHENOL SPEC#SSN 002 AND SPEC#SSN 004;
- ONLY FOR P/N: AA23006102, MATING PIN A6 HAS 0.5MM LESS NOMINAL WIPE THAN THE SHORTEST SIGNAL PIN.

FG P/N	SHORT DETECT CONTACT
AA23006100	NO
AA23006101	YES (SEE NOTE 12)
AA23006102	YES (SEE NOTE 15)

TABLE 1



UNLESS OTHERWISE SPECIFIED TOLERANCES U.S. METRIC .X +/- .XX +/- .XXX +/- FRACTIONS +/- ANGLES +/-	APPROVAL	DATE	Amphenol	
	DRAWN Johnny	10/18/11		
FOR MATERIALS AND FINISHES SEE NOTES	CHECKED Charles	10/18/11	TITLE AirMax VS RA HEADER ASSY PRESS-FIT, 54 PDS, 14MM	
	CHECKED			
REMOVE SHARP EDGES	DRAWING FILE :		SIZE DRAWING NO. REV. A3 C AA2300610Y 1	
DIMENSIONS	DRAWING/AMX/C AA2300610Y			
—US— —INCHES— (METRIC) (MM)	ANGLE OF PROJECTION		SCALE 1:1 SHEET 5 OF 5	

## X-ON Electronics

Largest Supplier of Electrical and Electronic Components

*Click to view similar products for [High Speed/Modular Connectors](#) category:*

*Click to view products by [Amphenol](#) manufacturer:*

Other Similar products are found below :

[650827-1](#) [74040-1346](#) [1410191-1](#) [1410337-1](#) [1410368-3](#) [1410964-2](#) [1410326-3](#) [1410367-3](#) [1410971-4](#) [1467833-1](#) [2000877-1](#) [2000878-1](#)  
[2041314-1](#) [2065387-1](#) [2187307-1](#) [163P](#) [1934290-1](#) [2000875-1](#) [2065917-1](#) [2102736-2](#) [FSR-40](#) [2169868-2](#) [22354-8](#) [437-5040-000](#) [5-](#)  
[1393565-0](#) [039-0246-000](#) [0740618502](#) [0761601016](#) [0784461022](#) [10123159-12ELF](#) [030-2415-003/100 PK](#) [030-7380-004](#) [030-2494-001](#)  
[532939-1](#) [5532901-3](#) [3-1469268-7](#) [74748-102LF](#) [73670-0247](#) [10041743-101LF](#) [10066670-100002LF](#) [1-533915-1](#) [249-4515-000](#) [7-1469373-](#)  
[3](#) [DL2-2J/S](#) [2000713-8](#) [2000713-7](#) [3011-21](#) [757105208](#) [EBTF-4-10-2.0-S-RA-1](#) [430305-001](#)