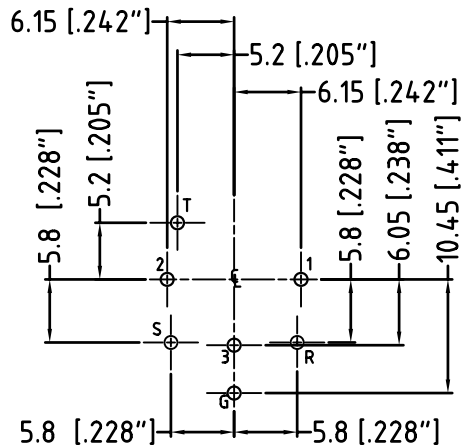
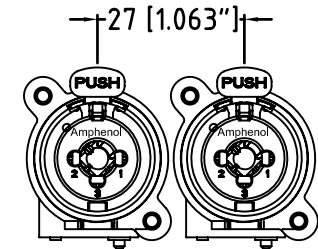
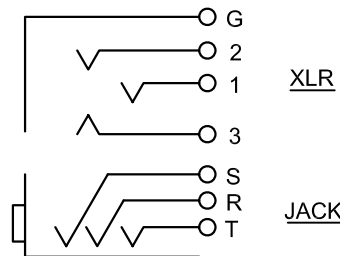


PANEL CUT OUT  
FRONT VIEW



PCB LAYOUT  
(component side)  
TOLERANCE:  $\pm 0.05\text{mm}$  [0.002"]

CONTACTS SCHEMATIC CHART



MIN MOUNTING PITCH  
ACTUAL SIZE

1	Correct Minimum Mounting Pitch dimension from 14mm to 27mm	M.H	19-03-09	8811
REV.	0	FIRST ISSUE	M.H	17-05-07
REV.		CHANGE DETAILS	BY	DATE
REV.		CHG/No		

UNLESS OTHERWISE SPECIFIED TOLERANCE TO BE		THIS DOCUMENT IS THE PROPERTY OF AMPHENOL AUSTRALIA PTY. LTD. NO PART THEREOF MAY BE REPRODUCED AND USED WITHOUT THE PRIOR WRITTEN CONSENT OF THE OWNER			
LINEAR	ANGULAR	CAD FILE: 55010430000111	DRN: M.H	DATE: 17-05-07	TITLE:
X $\pm$ 0.5	X° $\pm$ 1°	MATL: REFER TO COMPONENT	CKD: P.M	DATE: 19-03-09	ACJC6V C-TYPE CUSTOMER DRAWING
X.X $\pm$ 0.1	X°X' $\pm$ 30'	DO NOT SCALE	FINISH: REFER TO COMPONENT	DATE: 19-03-09	
X.XX $\pm$ 0.05	X°X'X'' $\pm$ 15''	DIMENSIONS IN MILLIMETRES		SCALE: 2:1 UDS	PART No: ACJC6V
BREAK ALL SHARP EDGES AND REMOVE ALL BURRS		THIRD ANGLE PROJECTION		SIZE: A3	55010430-000-1
				Amphenol	Amphenol Australia Pty.Ltd, 2 Fireways Blvd, Keysborough, Vic3173
				DRAWING NO.	SHEET
				1 OF 1	

## X-ON Electronics

Largest Supplier of Electrical and Electronic Components

*Click to view similar products for [XLR Connectors](#) category:*

*Click to view products by [Amphenol](#) manufacturer:*

Other Similar products are found below :

[707-0300](#) [8800235](#) [91101181024](#) [PPCB-H](#) [A3F01](#) [A3M01](#) [QGP3F](#) [HA16PRQ-3SE\(71\)](#) [AA3FL](#) [AAA4FWZ](#) [AAA4MWZ](#) [AC3-MIC](#) [AC4-MIC](#) [AC5FPZB](#) [AC6AFDZV](#) [D4FB](#) [DE4MW](#) [DHNFBAG](#) [E3MBAUSW](#) [NA2FP-UW](#) [NA3MP-UW](#) [NC3FBHR1-0](#) [NC3FD-H-0](#) [NC3FK-V](#) [NC3FXY-B](#) [NC3MK-V](#) [NC3MXY](#) [NC5FX-HD-B](#) [NC6MSX-BAG](#) [91210071096](#) [SL05](#) [99.265.0400.0](#) [A3F04](#) [AC3FG](#) [AC4-FCP](#) [AC4FPZ](#) [AQG4F](#) [2504FP](#) [30-498-2](#) [R6MZ](#) [3FD-H-I](#) [3FD-H-I-\(0\)](#) [3FD-H-I-B](#) [3FD-V-I](#) [3FD-V-I-\(0\)](#) [3FD-V-I-B](#) [3MD-H-I-B](#) [3MD-V-I](#) [3MD-V-I-B](#) [TA01](#)