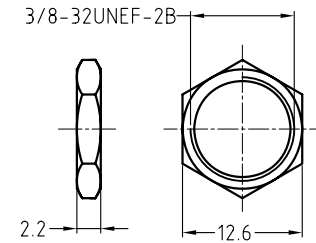
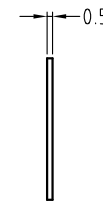
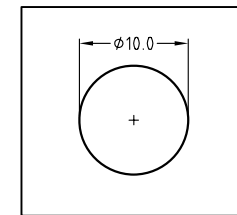


METAL WASHER



METAL NUT



PANEL CUTOUT

PART No.	ACJM-MVS-2	ACJM-MVS-2S	ACJS-MVS-3	ACJS-MVS-3S	ACJS-MVS-5
SCHEMATIC					

UNLESS OTHERWISE SPECIFIED TOLERANCE TO BE	
LINEAR	ANGULAR
X ± 0.5	X° ± 1°
XX ± 0.1	X°X' ± 30'
XXX ± 0.05	X°X'X" ± 15"

THIS DOCUMENT IS THE PROPERTY OF AMPHENOL AUSTRALIA PTY. LTD. NO PART THEREOF MAY BE REPRODUCED AND USED WITHOUT THE PRIOR WRITTEN CONSENT OF THE OWNER

BREAK ALL SHARP EDGES AND REMOVE ALL BURRS

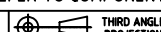
DO NOT SCALE

DIMENSIONS IN MILLIMETRES

CAD FILE: 55010642000111

MATL: REFER TO COMPONENTS

FINISH: REFER TO COMPONENTS



DRN: M.H

CKD: M.N.H

APP'D: P.M

SCALE: 2:1 UOS

DATE: 08-12-09

DATE: 27-05-11

DATE: 27-05-11

PART No:

1

0

REV.

ADD TERMINAL ID TO REFLECT THE SCHEMATIC DIAGRAM

FIRST ISSUE

CHANGE DETAILS

M.H 27-05-11

M.H 08-12-09

BY DATE CHG/No

TITLE:
ACJS/M-MVS
1/4" PHONE JACK
CUSTOMER DWG

Amphenol
Amphenol Australia Pty.Ltd, 2 Fireweys Blvd, Keysborough, Vic3173
DRAWING No. SHEET

SEE CHART

SIZE: A3

55010642-000-5 1 OF 5

X-ON Electronics

Largest Supplier of Electrical and Electronic Components

Click to view similar products for [Phone Connectors](#) category:

Click to view products by [Amphenol](#) manufacturer:

Other Similar products are found below :

[M444B](#) [6J1041A](#) [R4F](#) [E12BPKG](#) [ECP4PKG](#) [161-3502L-E](#) [MT333X](#) [171-0350-EX](#) [171-101A-EX](#) [171-3325-EX](#) [176S](#) [NC3MG-V](#)
[NYS228G](#) [P10834](#) [P2380](#) [P2381X](#) [P2411X](#) [P2412](#) [P2724](#) [JM2PB-AU BULK](#) [9144](#) [S2674](#) [280L](#) [163-156N-2-E](#) [163-158N-2-E](#) [171-3308-](#)
[EX](#) [171-3500-E](#) [2501FT](#) [CMT335](#) [M10662](#) [330Q](#) [RJ5VI-S](#) [40116](#) [TM1R-AU](#) [TM2PBMJ-AU](#) [TM2PJ-AU](#) [TM2PJ-AU BULK](#) [4803.1351](#)
[49201](#) [49205](#) [TS3PBJ-AU](#) [TS3PBMJ-AU](#) [TT32BX](#) [54B](#) [40112](#) [40205](#) [XMT332B](#) [52170017-331](#) [570](#) [NM3](#)