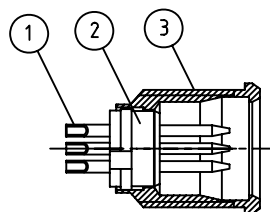


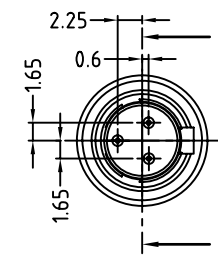
METAL NUT

METAL WASHER

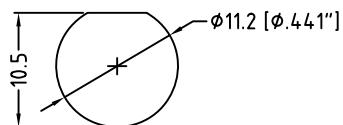
No. CONTACT	PART No.
3 POLE	AG3MCC
4 POLE	AG4MCC
5 POLE	AG5MCC
6 POLE	AG6MCC



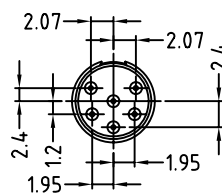
SECTION A-A



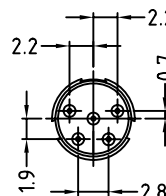
AG3MCC



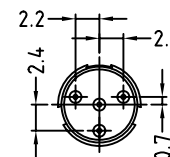
+ Panel cutout CL



AG6MCC



AG5MCC



AG4MCC

CONTACT LAYOUT

5	BRASS-NICKEL PLATED
4	BRASS-NICKEL PLATED
3	BRASS-NICKEL PLATED
2	PPS-BLACK
1	BRASS-GOLD PLATED
ITEM	MATERIAL

UNLESS OTHERWISE SPECIFIED TOLERANCE TO BE

LINEAR	ANGULAR
X ± 0.50	X° ± 1°
X.X ± 0.20	X°X' ± 30'
X.XX ± 0.10	X°X'X" ± 15"

BREAK ALL SHARP EDGES AND REMOVE ALL BURRS

DO NOT SCALE

DIMENSIONS IN MILLIMETRES

THIS DOCUMENT IS THE PROPERTY OF AMPHENOL AUSTRALIA PTY. LTD. NO PART THEREOF MAY BE REPRODUCED AND USED WITHOUT THE PRIOR WRITTEN CONSENT OF THE OWNER

CAD FILE: 55010413000111 DRN: M.H DATE: 24-05-07

MATL: SEE ITEM CKD: M.H DATE: 19-01-09

APP'D: M.H DATE: 19-01-09

THIRD ANGLE PROJECTION SCALE: 2:1 PART No: REFER TO CHART

1	CHANGE PART NUMBER FROM ENGINEERING TO CATALOGUE	M.H	19-01-09	----
0	FIRST ISSUE	M.H	24-05-07	----
REV.	CHANGE DETAILS	BY	DATE	CHG/No
TITLE: MINI XLR MALE RECEPTACLE CUSTOMER DWG				
DRAWING NO. 55010413-000-1		SHEET 2 OF 2		

X-ON Electronics

Largest Supplier of Electrical and Electronic Components

Click to view similar products for [XLR Connectors](#) category:

Click to view products by [Amphenol](#) manufacturer:

Other Similar products are found below :

[707-0300](#) [8800235](#) [91101181024](#) [PPCB-H](#) [A3F01](#) [A3M01](#) [QGP3F](#) [HA16PRQ-3SE\(71\)](#) [AA3FL](#) [AAA4FWZ](#) [AAA4MWZ](#) [AC3-MIC](#) [AC4-MIC](#) [AC5FPZB](#) [AC6AFDZV](#) [D4FB](#) [DE4MW](#) [DHNFBAG](#) [E3MBAUSW](#) [NA2FP-UW](#) [NA3MP-UW](#) [NC3FBHR1-0](#) [NC3FD-H-0](#) [NC3FK-V](#) [NC3FXY-B](#) [NC3MK-V](#) [NC3MXY](#) [NC5FX-HD-B](#) [NC6MSX-BAG](#) [91210071096](#) [SL05](#) [99.265.0400.0](#) [A3F04](#) [AC3FG](#) [AC4-FCP](#) [AC4FPZ](#) [AQG4F](#) [2504FP](#) [30-498-2](#) [R6MZ](#) [3FD-H-I](#) [3FD-H-I-\(0\)](#) [3FD-H-I-B](#) [3FD-V-I](#) [3FD-V-I-\(0\)](#) [3FD-V-I-B](#) [3MD-H-I-B](#) [3MD-V-I](#) [3MD-V-I-B](#) [TA01](#)