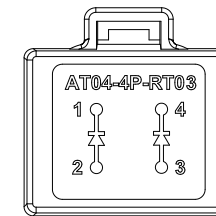
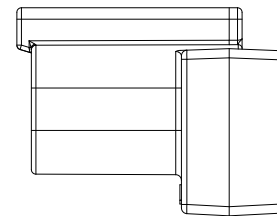
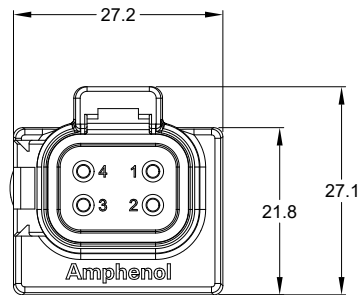
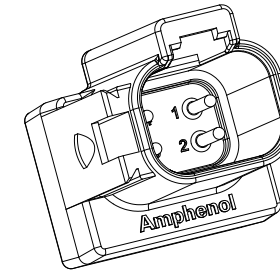
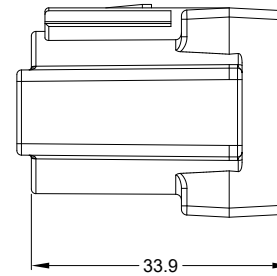


REVISIONS					
REV	ECO	DESCRIPTION	DATE	BY	APPR
A1	-	RELEASE	14MAY19	SULLEN	TOMMY
A2	-	UPDATE MOISTURE RESISTANCE	14MAY21	SULLEN	TOMMY

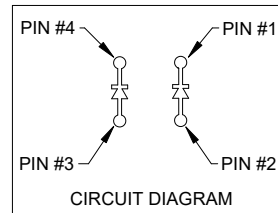


NOTES: UNLESS OTHERWISE SPECIFIED

1. MATERIAL:
 HOUSING: THERMOPLASTIC, GRAY
 CONTACT: COPPER ALLOY
 CONTACT PLATING: NICKEL PLATED

2. MODIFICATIONS: DIODE

3. SPECIFICATIONS:
 3.1 DIODE P/N: MUR460G
 3.2 PEAK REVERSE VOLTAGE: 600.0 V MAX.
 3.3 PEAK FORWARD VOLTAGE: 1.28 V MAX.
 3.4 AVERAGE FORWARD CURRENT: 4.0 A MAX.
 3.5 OPERATING TEMPERATURE: -55°C TO +125°C
 3.6 MOISTURE RESISTANCE:
 IP68(1M OF WATER FOR A PERIOD OF 24 HOURS, MATED CONDITION)
 IP69K(MATED CONDITION)
 3.7 MATING CYCLE DURABILITY: 100 CYCLES
 3.8 RoHS COMPLIANT



4. MATING PART: AT06-4S*
 (* = ALL MODIFICATIONS)

5. ALL DIMENSIONS ARE FOR REFERENCE USE ONLY

AT04-4P-RT03		REF: DT04-4P-RT03			
PART NUMBER		DESCRIPTION		ITEM	
QUANTITY		MATERIALS LIST			
UNLESS OTHERWISE SPECIFIED		SIGNATURES		DATE	
1) All dimensions are in metric(mm).		DRAWN: SULENZHANG		14MAY21	
2) Tolerances are as follows:		CHECKED: ORIONLI		15MAY21	
1 PL DEC ±0.30		ENGINEER:			
2 PL DEC ±0.15		APPROVAL: TOMMY.XIE		17MAY21	
3 PL DEC ±0.08		CUSTOMER:			
3) Note reference =		THIS DRAWING IS SUPPLIED FOR INFORMATION ONLY. DESIGN FEATURES, SPECIFICATIONS AND PERFORMANCE DATA SHOWN HEREON ARE THE PROPERTY OF THE AMPHENOL CORPORATION. NO RIGHTS OF REPRODUCTION ARE IMPLIED. ALL DIMENSIONS ARE SUBJECT TO NORMAL MANUFACTURING VARIATIONS.			
MATERIAL SPECIFICATIONS:		SIZE		TYPE	
PROCESS SPECIFICATIONS:		B C-		DWG NO.	
NEXT ASSY:		SCALE: NONE		REVISION	
				AT04-4P-RT03	
				A2	
				SHEET 1 OF 1	

TITLE: RECEPTACLE 4PIN,TERMINATOR,AT SERIES
 DWG NO: AT04-4P-RT03
 REV: A2
 SH: 1
 OF: 1

X-ON Electronics

Largest Supplier of Electrical and Electronic Components

Click to view similar products for [Automotive Connectors](#) category:

Click to view products by [Amphenol](#) manufacturer:

Other Similar products are found below :

[003-018-000](#) [60403001](#) [60993906-B](#) [M902-2131](#) [M902-2161](#) [72.330.1035.1](#) [73.353.4028.0](#) [F119300-B](#) [F166900](#) [F258300-B](#) [F358300-B](#)
[F407400](#) [F444110](#) [F487000](#) [F509500B-B](#) [827153-1](#) [8N1515-32-24P](#) [9-1326729-8](#) [925474-1](#) [928905-1](#) [964562-4](#) [968782-1](#) [GT17SA-8DS-](#)
[HU](#) [98891-1012](#) [98947-1016](#) [12004475-L](#) [12010290](#) [12010309-B](#) [12015454](#) [12020219-B](#) [12020308](#) [12041318-B](#) [12052225-L](#) [12052466](#)
[12059125](#) [12064869](#) [12004327-B](#) [12010503-B](#) [12015308](#) [12015384](#) [12015909](#) [1-21030-1](#) [12041254](#) [12041318](#) [12047946-B](#) [12047957](#)
[12047957-L](#) [12059473](#) [12066261](#) [12110546](#)