

NOTES: UNLESS OTHERWISE SPECIFIED

1. SEE SHEET 2 FOR KEY ARRANGEMENTS AND COLORS.

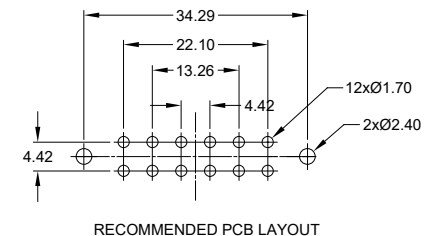
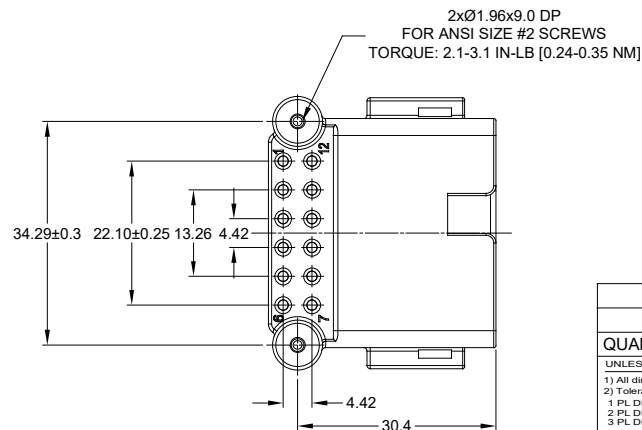
2. MATERIAL:
 HOUSING: THERMOPLASTIC
 CONTACT: COPPER ALLOY
 PLATING: NICKEL UNDERPLATE
 SEE CHART FOR OVERALL FINISH

3. MODIFICATIONS: RIGHT ANGLE PCB MOUNT, SCREW BOSS
 KEYED, HOUSING COLOR

4. SPECIFICATIONS:
 4.1 CURRENT RATING: 13 AMPS
 4.2 OPERATING TEMPERATURE: -55°C TO +125°C
 4.3 DIELECTRIC WITHSTANDING VOLTAGE: LESS THAN 2
 MILLIAMPS CURRENT LEAKAGE @ 1500 VOLTS AC.
 4.4 INSULATION RESISTANCE: 1000 MEGOHMS MIN @ 25°C.
 4.5 MOISTURE RESISTANCE: IP67 (MATED CONDITION)
 4.6 MATING CYCLE DURABILITY: 100 CYCLES
 4.7 RoHS COMPLIANT

5. MATING PART: AT06-12S* PLUG
 (* = MODIFICATIONS AND COLORS)

6. ALL DIMENSIONS ARE FOR REFERENCE USE ONLY.



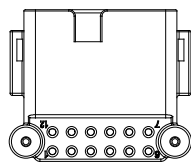
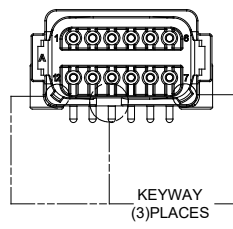
REVISIONS					
REV	ECO	DESCRIPTION	DATE	BY	APPR
A1	-	RELEASE	02JUL2018	JAH	
A2	-	UPDATE DRAWING	25/MAR/19	BROOK	TOMMY
A3	-	MODIFIED DESCRIPTION	12JUL19	BROOK	TOMMY

SEE PART NUMBER CHART		REF: DTF13-12PA, DTF13-12PB, DTF13-12PC, DTF13-12PD, DTF13-12PA-G003		ITEM
PART NUMBER		DESCRIPTION		ITEM
QUANTITY	MATERIALS LIST			
UNLESS OTHERWISE SPECIFIED: 1) All dimensions are in metric (mm). 2) Tolerances are as follows: 1 PL DEC ±0.30 Fractions ±1/64 2 PL DEC ±0.15 Angles ±1° 3 PL DEC ±0.08		SIGNATURES		DATE
		DRAWN: BROOK DING		12/JUL/19
		CHECKED: ORION LI		12/JUL/19
		ENGINEER:		
		APPROVAL: TOMMY XIE		12/JUL/19
MATERIAL SPECIFICATIONS:		CUSTOMER:		
PROCESS SPECIFICATIONS:		THIS DRAWING IS SUPPLIED FOR INFORMATION ONLY. DESIGN FEATURES, SPECIFICATIONS AND PERFORMANCE DATA SHOWN HEREON ARE THE PROPERTY OF THE AMPHENOL CORPORATION. NO RIGHTS OF REPRODUCTION ARE IMPLIED. ALL DIMENSIONS ARE SUBJECT TO NORMAL MANUFACTURING VARIATIONS.		
NEXT ASSY:		SIZE	DWG NO.	REVISION
		B C-	ATF13-12PX-BM1X	A3
		SCALE: NONE	SHEET 1 OF 1	

TITLE: RIGHT ANGLE RECEPT, AT 12 PIN, SCREW BOSS, BOARD LOCK
 DWG NO.: ATF13-12PX-BM1X
 REV: A3
 SH: 1
 OF: 2

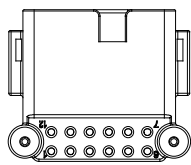
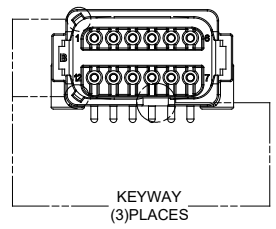
REVISIONS					
REV	ECO	DESCRIPTION	DATE	BY	APPR
A1	-	RELEASE	02JUL2018	JAH	
A2	-	UPDATE DRAWING	25/MAR/19	BROOK	TOMMY
A3	-	MODIFIED DESCRIPTION	12JUL19	BROOK	TOMMY

P/N ATF13-12PA-BM1X
KEY-A CONFIGURATION
STANDARD COLOR: GREY



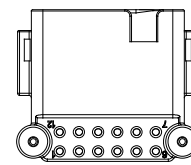
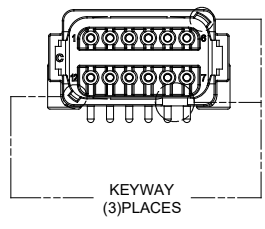
ATF13-12PA-BM1X VARIANTS	
CONTACT PLATING	PART NUMBER
GOLD	ATF13-12PA-BM11
TIN	ATF13-12PA-BM13

P/N ATF13-12PB-BM1X
KEY-B CONFIGURATION
STANDARD COLOR: BLACK



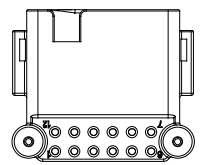
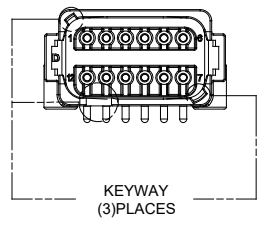
ATF13-12PB-BM1X VARIANTS	
CONTACT PLATING	PART NUMBER
GOLD	ATF13-12PB-BM11
TIN	ATF13-12PB-BM13

P/N ATF13-12PC-BM1X
KEY-C CONFIGURATION
STANDARD COLOR: GREEN



ATF13-12PC-BM1X VARIANTS	
CONTACT PLATING	PART NUMBER
GOLD	ATF13-12PC-BM11
TIN	ATF13-12PC-BM13

P/N ATF13-12PD-BM1X
KEY-D CONFIGURATION
STANDARD COLOR: BROWN



ATF13-12PD-BM1X VARIANTS	
CONTACT PLATING	PART NUMBER
GOLD	ATF13-12PD-BM11
TIN	ATF13-12PD-BM13

SEE PART NUMBER CHART		PART NUMBER		DESCRIPTION		ITEM								
QUANTITY		MATERIALS LIST												
UNLESS OTHERWISE SPECIFIED: 1) All dimensions are in metric (mm). 2) Tolerances are as follows: 1 PL DEC ±0.30 Fractions ±1/64 2 PL DEC ±0.15 Angles ±1° 3 PL DEC ±0.08 3) Note reference =		SIGNATURES		DATE		<p style="text-align: center;">Amphenol</p> <p style="text-align: center;">Sine Systems - www.amphenol-sine.com 44724 Morley Drive Clinton Township, MI 48036</p> <p style="text-align: center;">RIGHT ANGLE RECEPTACLE, AT 12 PIN, SCREW BOSS, BOARDLOCK</p>								
MATERIAL SPECIFICATIONS:		DRAWN: BROOK.DING	12/JUL/19		<table border="1"> <tr> <th>SIZE</th> <th>TYPE</th> <th>DWG NO.</th> <th>REVISION</th> </tr> <tr> <td>B</td> <td>C-</td> <td>ATF13-12PX-BM1X</td> <td>A3</td> </tr> </table>		SIZE	TYPE	DWG NO.	REVISION	B	C-	ATF13-12PX-BM1X	A3
SIZE	TYPE	DWG NO.	REVISION											
B	C-	ATF13-12PX-BM1X	A3											
PROCESS SPECIFICATIONS:		CHECKED: ORION.LI	12/JUL/19		<table border="1"> <tr> <td>SCALE: NONE</td> <td>SHEET 2 OF 2</td> </tr> </table>	SCALE: NONE	SHEET 2 OF 2							
SCALE: NONE	SHEET 2 OF 2													
NEXT ASSY:		ENGINEER:												

TITLE: RIGHT ANGLE RECEPT. AT 12 PIN, SCREW BOSS, BOARDLOCK
DWG NO.: ATF13-12PX-BM1X
REV: A3
SH: 2
OF: 2

X-ON Electronics

Largest Supplier of Electrical and Electronic Components

Click to view similar products for [Automotive Connectors](#) category:

Click to view products by [Amphenol](#) manufacturer:

Other Similar products are found below :

[003-018-000](#) [60403001](#) [60993906-B](#) [M902-2131](#) [M902-2161](#) [72.330.1035.1](#) [73.353.4028.0](#) [F119300-B](#) [F166900](#) [F258300-B](#) [F358300-B](#)
[F407400](#) [F444110](#) [F487000](#) [F509500B-B](#) [827153-1](#) [8N1515-32-24P](#) [9-1326729-8](#) [925474-1](#) [928905-1](#) [964562-4](#) [968782-1](#) [GT17SA-8DS-](#)
[HU](#) [98891-1012](#) [98947-1016](#) [12004475-L](#) [12010290](#) [12010309-B](#) [12015454](#) [12020219-B](#) [12020308](#) [12041318-B](#) [12052225-L](#) [12052466](#)
[12059125](#) [12064869](#) [12004327-B](#) [12010503-B](#) [12015308](#) [12015384](#) [12015909](#) [1-21030-1](#) [12041254](#) [12041318](#) [12047946-B](#) [12047957](#)
[12047957-L](#) [12059473](#) [12066261](#) [12110546](#)