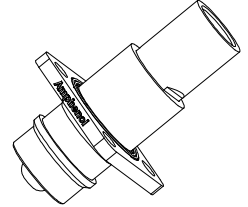
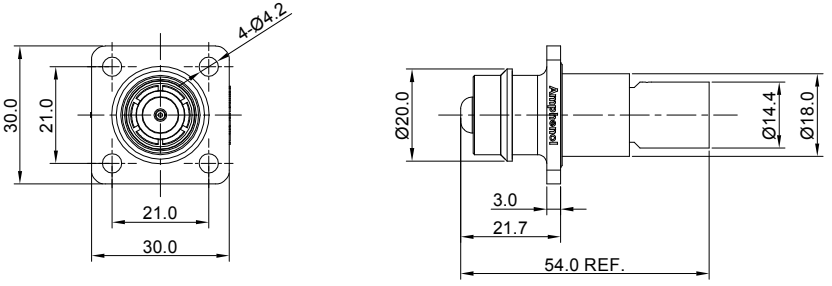


| REVISIONS |     |                 |           |       |       |
|-----------|-----|-----------------|-----------|-------|-------|
| REV       | ECO | DESCRIPTION     | DATE      | BY    | APPR  |
| A1        | -   | FIRST RELEASE   | Jul.31,18 | White | Tommy |
| A2        | -   | UPDATED DRAWING | Sep.27,18 | White | Tommy |
| A3        | -   | UPDATED DRAWING | Dec.11,18 | White | Tommy |



NOTES: UNLESS OTHERWISE SPECIFIED

- MATERIAL:
  - HOUSING: THERMOPLASTIC UL94 V0
  - SEAL: SILICONE RUBBER
  - CONTACT: COPPER ALLOY,SILVER PLATED
- SPECIFICATIONS:
  - CURRENT RATING: 50 mm<sup>2</sup> @180 AMPS  
35 mm<sup>2</sup> @130 AMPS
  - OPERATING VOLTAGE: 1000V AC/DC
  - CONTACT RESISTANCE:0.3mΩ
  - OPERATING TEMPERATURE: -55°C TO +125°C
  - DEGREE OF PROTECTION: IP67 (MATED CONDITION)
  - MATING CYCLE DURABILITY: 50 CYCLES
  - RoHS COMPLIANT
- ALL DIMENSIONS ARE FOR REFERENCE USE ONLY.

| ITEM | P/N                 | WIRE RANGE         | NOTE          |
|------|---------------------|--------------------|---------------|
| 1    | ATHP041P08NN-50     | 50 mm <sup>2</sup> | BLACK(SHELL)  |
| 2    | ATHP041P08NN-35     | 35 mm <sup>2</sup> | BLACK(SHELL)  |
| 3    | ATHP041P08NN-50-ORG | 50 mm <sup>2</sup> | ORANGE(SHELL) |
| 4    | ATHP041P08NN-35-ORG | 35 mm <sup>2</sup> | ORANGE(SHELL) |

| QUANTITY  | PART NUMBER | DESCRIPTION  | ITEM |
|---|-------------|--|------|
| <b>MATERIALS LIST</b>   |             |  |      |
| <b>UNLESS OTHERWISE SPECIFIED</b><br>1) All dimensions are in metric(mm).<br>2) Tolerances are as follows:<br>1 PL DEC ±0.30 Fractions ±1/64<br>2 PL DEC ±0.15<br>3 PL DEC ±0.08<br>3) Note reference = |             | <b>SIGNATURES DATE</b><br>DRAWN: <b>White</b> Dec.11,18<br>CHECKED: <b>Tod</b> Dec.11,18<br>APPROVAL: <b>Tommy</b> Dec.11,18   |      |
| MATERIAL SPECIFICATIONS:<br><br>PROCESS SPECIFICATIONS:<br><br>NEXT ASSY:   |             | <br>Sine Systems - www.amphenol-sine.com<br>44724 Morley Drive<br>Clinton Township, MI 48036<br><br>ATHP,8MM,<br>STRAIGHT RECEPTACLE<br><br>THIS DRAWING IS SUPPLIED FOR INFORMATION ONLY. DESIGN FEATURES, SPECIFICATIONS AND PERFORMANCE DATA SHOWN HEREON ARE THE PROPERTY OF THE AMPHENOL CORPORATION. NO RIGHTS OF REPRODUCTION ARE IMPLIED. ALL DIMENSIONS ARE SUBJECT TO NORMAL MANUFACTURING VARIATIONS. |      |
| SIZE: <b>B</b> TYPE: <b>C-</b>  |             | DWG NO: <b>ATHP041P08NN-xx-x</b> REVISION: <b>A3</b>   |      |
| SCALE: NONE   |             | SHEET 1 OF 1   |      |

TITLE: ATHP 8MM STRAIGHT RECEPTACLE  
 DWG NO.: ATHP041P08NN-xx-x  
 REV: A3  
 SH: 1  
 OF: 1

## X-ON Electronics

Largest Supplier of Electrical and Electronic Components

*Click to view similar products for [Heavy Duty Power Connectors](#) category:*

*Click to view products by [Amphenol](#) manufacturer:*

Other Similar products are found below :

[647757-1](#) [6643411-1](#) [6646058-2](#) [6646137-1](#) [6646138-1](#) [6646479-1](#) [6646608-1](#) [6646786-1](#) [6646940-1](#) [6651091-1](#) [6651525-1](#) [6651529-1](#)  
[6651788-1](#) [696475-1](#) [73000005059](#) [73000005642](#) [765-15-0080A](#) [765-16-0080B](#) [829992-1](#) [902-77-02113](#) [129-1J](#) [AN0024023](#) [E6374G1](#)  
[e6389g2](#) [157-43GW8](#) [MS3117-14AC](#) [1643543-1](#) [1650540-1](#) [1651811-2](#) [1766260-1](#) [1766282-1](#) [1766966-1](#) [1791340000](#) [NLDFT-3-BL-L-](#)  
[S120-M40A](#) [NLDFT-N-W-L-C240-M40B](#) [NLS-2-R-C240-M40B](#) [NLS-N-W-C240-M40B](#) [NPS-3-BL-T6](#) [1986615-1](#) [2-1589900-8](#) [2199314-1](#)  
[KA8102](#) [9300480317](#) [SBS50BRN#6](#) [29131](#) [29652](#) [1646905-1](#) [1648320-1](#) [1648582-1](#) [1650195-2](#)