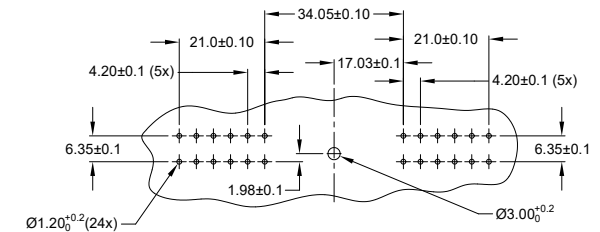
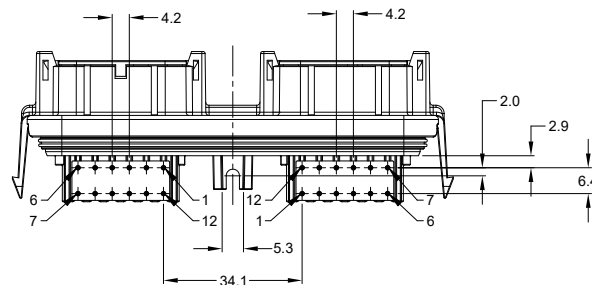
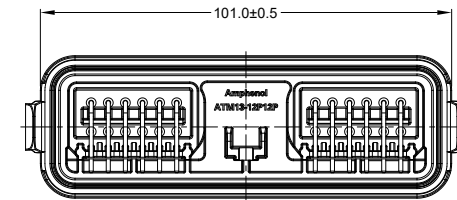
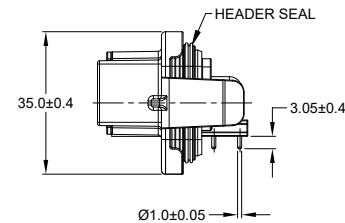
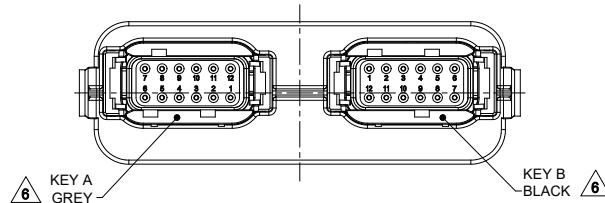
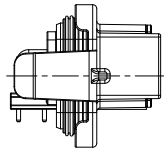
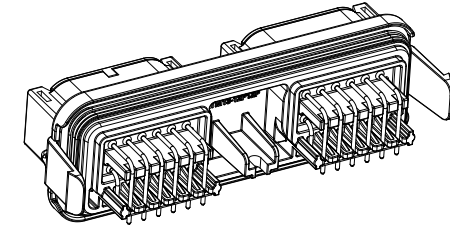
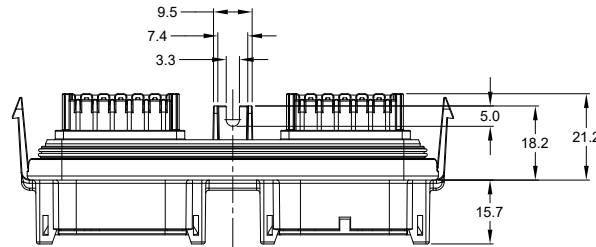


REVISIONS					
REV	ECO	DESCRIPTION	DATE	BY	APPR
A1	-	RELEASE NEW DRAWING	06NOV18	SULLEN	TOMMY
A2	-	UPDATED DRAWING	18FEB19	SULLEN	TOMMY
A3	-	ADD SPACE LIMIT DIMENSION	15JAN20	SULLEN	TOMMY



RECOMMENDED PCB LAYOUT
VIEW FROM COMPONENTS
SIDE OF PCB

NOTES: UNLESS OTHERWISE SPECIFIED

- MATERIAL:
HOUSING: THERMOPLASTIC, BLACK
SEAL: SILICONE RUBBER
CONTACT: COPPER ALLOY
- MODIFICATIONS: RA PCB MOUNT
- SPECIFICATIONS:
3.1 CURRENT RATING: 7.5 AMPS
3.2 OPERATING TEMPERATURE: -55°C TO +125°C
3.3 DIELECTRIC WITHSTANDING VOLTAGE: LESS THAN 2 MILLIAMPS CURRENT LEAKAGE @ 1500 VOLTS AC
3.4 INSULATION RESISTANCE: 1000 MEGOHMS MIN @ 25°C
3.5 MOISTURE RESISTANCE: IP69K (MATED CONDITION)
3.6 MATING CYCLE DURABILITY: 100 CYCLES
3.7 RoHS COMPLIANT
- MATING PART: ATM06-12SX-*
(X = A,B,C,D KEYS ; * = ALL MODIFICATIONS)
- THIS RECEPTACLE IS USED WITH AIPXE-325X4A-XXXX AND AIPXE-325X4B-XXXX ENCLOSURE (XXXX= ALL MODIFICATIONS)

6. SEE SHEET 2 AND 3 FOR OTHER KEY ARRANGEMENTS AND COLORS

7. MAXIMUM COMPONENT HEIGHT DEPENDS ON LOCATION DUE TO PART DRAFT AND RIBS. (SEE SHEET 4)

8. ALL DIMENSIONS ARE FOR REFERENCE USE ONLY

SEE SHEET 2 & 3		DESCRIPTION		ITEM
QUANTITY	PART NUMBER	MATERIALS LIST		
UNLESS OTHERWISE SPECIFIED 1) All dimensions are in metric (mm). 2) Tolerances are as follows: 1 PL DEC ±0.30 2 PL DEC ±0.15 3 PL DEC ±0.08 3) Note reference =		SIGNATURES DATE DRAWN: SULLEN,ZHANG 15JAN20 CHECKED: ORION,LI 16JAN20 ENGINEER: APPROVAL: TOMMY,XIE 17JAN20 CUSTOMER:		Amphenol Sine Systems - www.amphenol-sine.com 44724 Morley Drive Clinton Township, MI 48036
MATERIAL SPECIFICATIONS:		THIS DRAWING IS SUPPLIED FOR INFORMATION ONLY. DESIGN FEATURES, SPECIFICATIONS AND PERFORMANCE DATA SHOWN HEREON ARE THE PROPERTY OF THE AMPHENOL CORPORATION. NO RIGHTS OF REPRODUCTION ARE IMPLIED. ALL DIMENSIONS ARE SUBJECT TO NORMAL MANUFACTURING VARIATIONS.		
PROCESS SPECIFICATIONS:		SIZE TYPE DWG NO. B C- ATM13-12PX-12PX-BMXX A3		REVISION
NEXT ASSY:		SCALE: NONE		SHEET 1 OF 4

TITLE: ARMOR IPX RECEPTACLE ATM13-12PX-12PX-BMXX

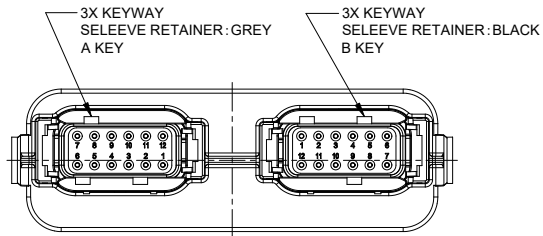
DWG NO: ATM13-12PX-12PX-BMXX

REV: A3

SH: 1

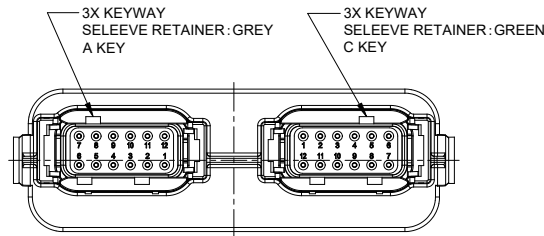
OF: 4

REVISIONS					
REV	ECO	DESCRIPTION	DATE	BY	APPR
A1	-	RELEASE NEW DRAWING	06NOV18	SULLEN	TOMMY
A2	-	UPDATED DRAWING	18FEB19	SULLEN	TOMMY
A3	-	ADD SPACE LIMIT DIMENSION	15JAN20	SULLEN	TOMMY



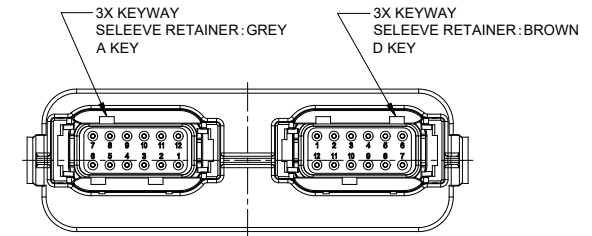
KEY AB

CONTACT PLATING	PART NUMBER	REFERENCE
GOLD	ATM13-12PA-12PB-BM01	DTM13-12PA-12PB-GR01
TIN	ATM13-12PA-12PB-BM03	DTM13-12PA-12PB-R008



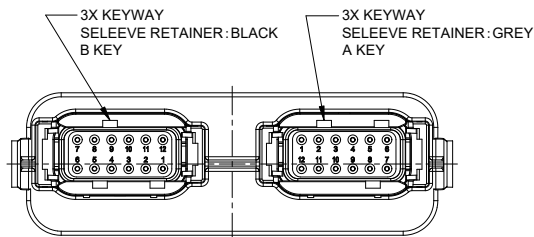
KEY AC

CONTACT PLATING	PART NUMBER	REFERENCE
GOLD	ATM13-12PA-12PC-BM01	DTM13-12PA-12PC-GR01
TIN	ATM13-12PA-12PC-BM03	DTM13-12PA-12PC-R008



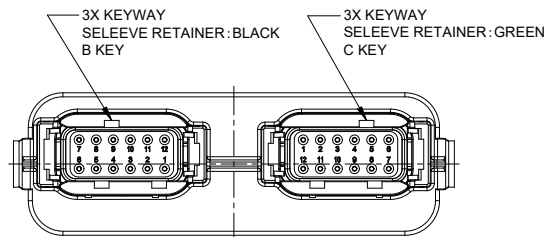
KEY AD

CONTACT PLATING	PART NUMBER	REFERENCE
GOLD	ATM13-12PA-12PD-BM01	DTM13-12PA-12PD-GR01
TIN	ATM13-12PA-12PD-BM03	DTM13-12PA-12PD-R008



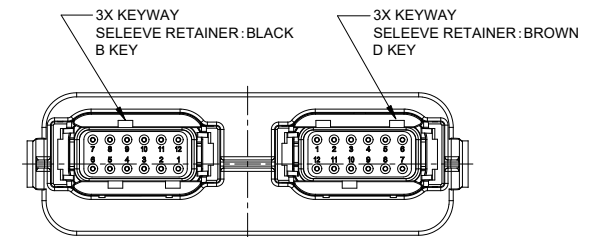
KEY BA

CONTACT PLATING	PART NUMBER	REFERENCE
GOLD	ATM13-12PB-12PA-BM01	DTM13-12PB-12PA-GR01
TIN	ATM13-12PB-12PA-BM03	DTM13-12PB-12PA-R008



KEY BC

CONTACT PLATING	PART NUMBER	REFERENCE
GOLD	ATM13-12PB-12PC-BM01	DTM13-12PB-12PC-GR01
TIN	ATM13-12PB-12PC-BM03	DTM13-12PB-12PC-R008



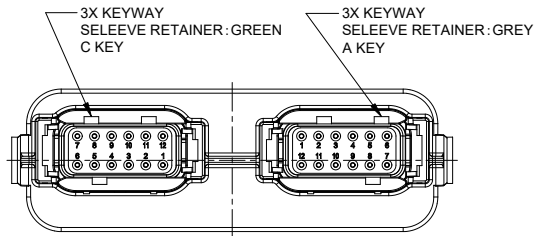
KEY BD

CONTACT PLATING	PART NUMBER	REFERENCE
GOLD	ATM13-12PB-12PD-BM01	DTM13-12PB-12PD-GR01
TIN	ATM13-12PB-12PD-BM03	DTM13-12PB-12PD-R008

ATM13-12PX-12PX-BMXX		DESCRIPTION		ITEM
PART NUMBER		DESCRIPTION		
QUANTITY	MATERIALS LIST			
UNLESS OTHERWISE SPECIFIED 1) All dimensions are in metric(mm). 2) Tolerances are as follows: 1 PL DEC ±0.30 2 PL DEC ±0.15 3 PL DEC ±0.08 Fractions ±1/64 Angles ±1° 3) Note reference =				
SIGNATURES		DATE		
DRAWN: SULENZHANG		15JAN20		
CHECKED: ORIONLI		16JAN20		
ENGINEER:				
APPROVAL: TOMMYXIE		17JAN20		
CUSTOMER:				
MATERIAL SPECIFICATIONS:		THIS DRAWING IS SUPPLIED FOR INFORMATION ONLY. DESIGN FEATURES, SPECIFICATIONS AND PERFORMANCE DATA SHOWN HEREON ARE THE PROPERTY OF THE AMPHENOL CORPORATION. NO RIGHTS OF REPRODUCTION ARE IMPLIED. ALL DIMENSIONS ARE SUBJECT TO NORMAL MANUFACTURING VARIATIONS.		
PROCESS SPECIFICATIONS:				
NEXT ASSY:				
SCALE: NONE		SHEET 2 OF 4		REVISION
B C-		ATM13-12PX-12PX-BMXX		A3

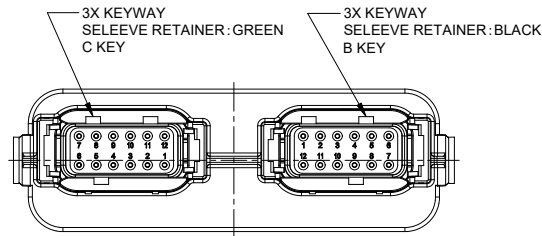
TITLE: ARMOR IPX RECEPTACLE ATM HDR, 2x 12 POSITIONS, SIZE 20 CONTACT
 DWG NO.: ATM13-12PX-12PX-BMXX
 REV: A3
 SH: 2
 OF: 4

REVISIONS					
REV	ECO	DESCRIPTION	DATE	BY	APPR
A1	-	RELEASE NEW DRAWING	06NOV18	SULLEN	TOMMY
A2	-	UPDATED DRAWING	18FEB19	SULLEN	TOMMY
A3	-	ADD SPACE LIMIT DIMENSION	15JAN20	SULLEN	TOMMY



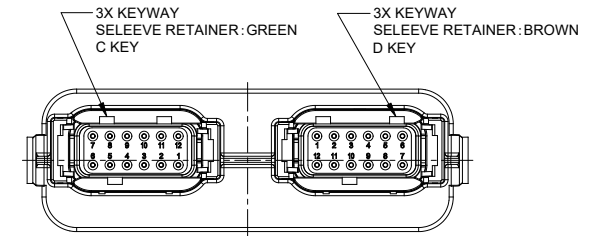
KEY CA

CONTACT PLATING	PART NUMBER	REFERENCE
GOLD	ATM13-12PC-12PA-BM01	DTM13-12PC-12PA-GR01
TIN	ATM13-12PC-12PA-BM03	DTM13-12PC-12PA-R008



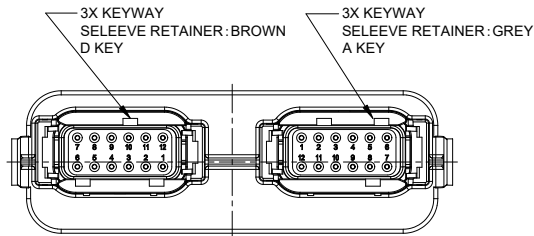
KEY CB

CONTACT PLATING	PART NUMBER	REFERENCE
GOLD	ATM13-12PC-12PB-BM01	DTM13-12PC-12PB-GR01
TIN	ATM13-12PC-12PB-BM03	DTM13-12PC-12PB-R008



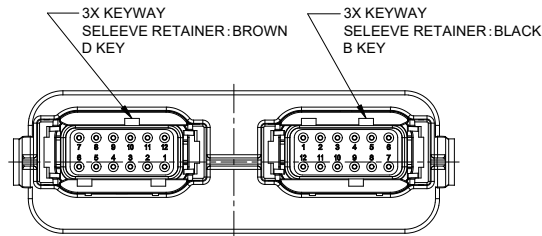
KEY CD

CONTACT PLATING	PART NUMBER	REFERENCE
GOLD	ATM13-12PC-12PD-BM01	DTM13-12PC-12PD-GR01
TIN	ATM13-12PC-12PD-BM03	DTM13-12PC-12PD-R008



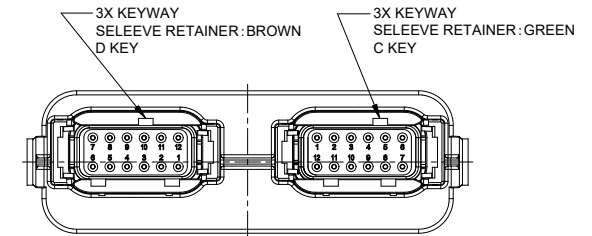
KEY DA

CONTACT PLATING	PART NUMBER	REFERENCE
GOLD	ATM13-12PD-12PA-BM01	DTM13-12PD-12PA-GR01
TIN	ATM13-12PD-12PA-BM03	DTM13-12PD-12PA-R008



KEY DB

CONTACT PLATING	PART NUMBER	REFERENCE
GOLD	ATM13-12PD-12PB-BM01	DTM13-12PD-12PB-GR01
TIN	ATM13-12PD-12PB-BM03	DTM13-12PD-12PB-R008



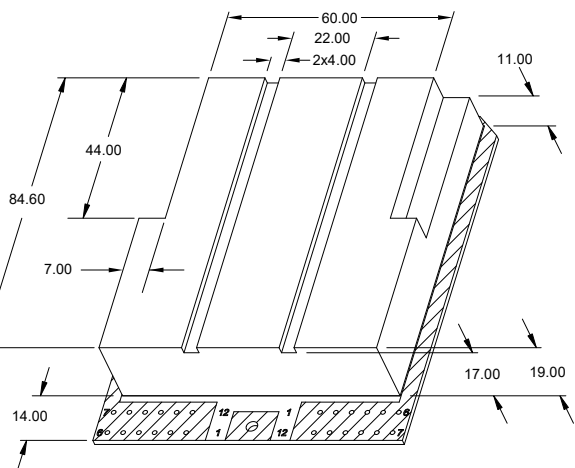
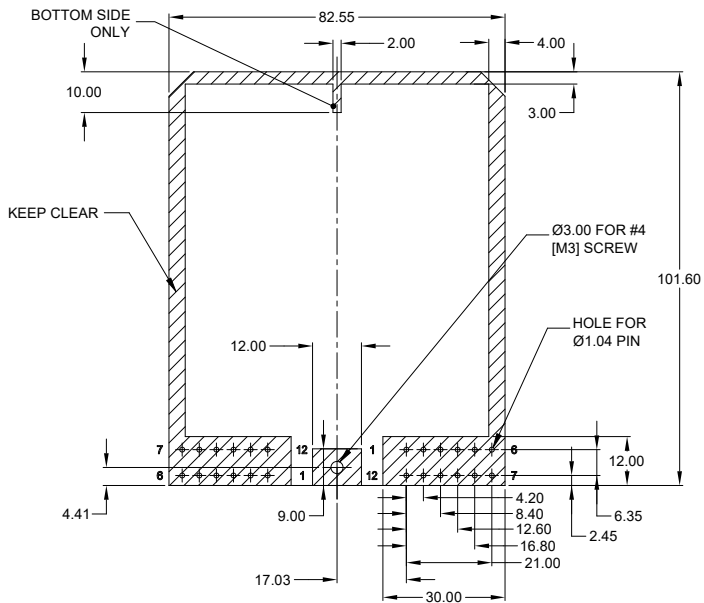
KEY DC

CONTACT PLATING	PART NUMBER	REFERENCE
GOLD	ATM13-12PD-12PC-BM01	DTM13-12PD-12PC-GR01
TIN	ATM13-12PD-12PC-BM03	DTM13-12PD-12PC-R008

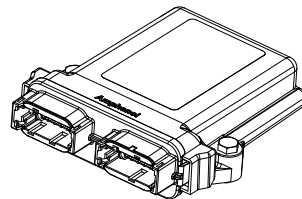
ATM13-12PX-12PX-BMXX		DESCRIPTION		ITEM
PART NUMBER		DESCRIPTION		
QUANTITY	MATERIALS LIST			
UNLESS OTHERWISE SPECIFIED 1) All dimensions are in metric(mm). 2) Tolerances are as follows: 1 PL DEC ±0.30 2 PL DEC ±0.15 3 PL DEC ±0.08 Fractions ±1/64 Angles ±1°		SIGNATURES		DATE
DRAWN: SULLEN,ZHANG		15JAN20		
CHECKED: ORIONLI		16JAN20		
ENGINEER:				
APPROVAL: TOMMY,XIE		17JAN20		
CUSTOMER:				
MATERIAL SPECIFICATIONS:		THIS DRAWING IS SUPPLIED FOR INFORMATION ONLY. DESIGN FEATURES, SPECIFICATIONS AND PERFORMANCE DATA SHOWN HEREON ARE THE PROPERTY OF THE AMPHENOL CORPORATION. NO RIGHTS OF REPRODUCTION ARE IMPLIED. ALL DIMENSIONS ARE SUBJECT TO NORMAL MANUFACTURING VARIATIONS.		
PROCESS SPECIFICATIONS:		SCALE: NONE		
NEXT ASSY:		SCALE: NONE		
		SINE SYSTEMS - www.amphenol-sine.com 44724 Morley Drive Clinton Township, MI 48036		
		ARMOR IPX RECEPTACLE ATM HEADER, 2 x 12 POSITIONS, SIZE 20 CONTACT		
		SIZE TYPE DWG NO. REVISION B C- ATM13-12PX-12PX-BMXX A3		
		SHEET 3 OF 4		

TITLE: ARMOR IPX RECEPTACLE ATM HDR, 2x 12 POSITIONS, SIZE 20 CONTACT
DWG NO.: ATM13-12PX-12PX-BMXX
REV: A3
SH: 3
OF: 4

CIRCUIT BOARD HOLE LOCATIONS
AND KEEP CLEAR AREAS FOR
ATM13-12PX-12PX-BM01
ATM13-12PX-12PX-BM03
ALL DIMENSIONS REFERENCE
TOP VIEW

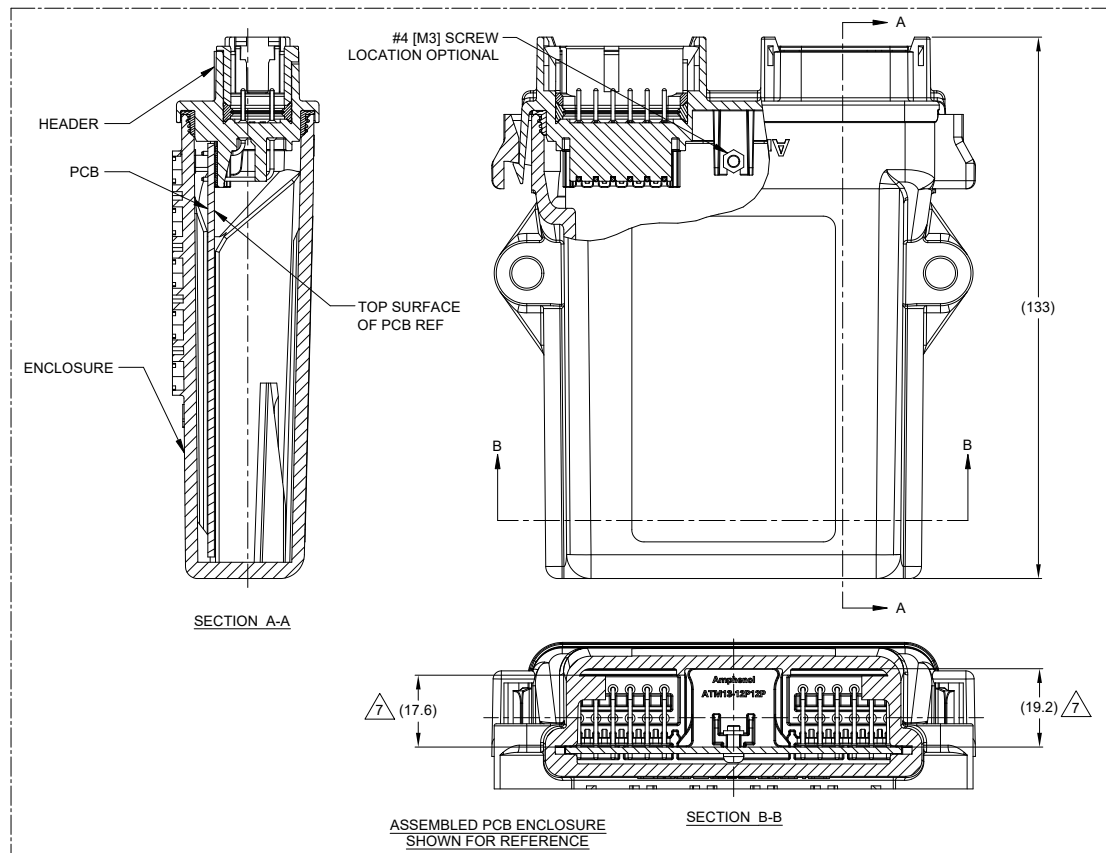


THREE DIMENSIONAL SPACE LIMIT
APPROXIMATE INTERNAL SPACE
FOR COMPONENT SPACE LAYOUT
MAX. COMPONENT HEIGHT UNDER BOARD 2.00 mm.



3D VIEW
AIPXE-325X4A-XXXX AND
AIPXE-325X4B-XXXX ENCLOSURE AND
MOUNTING HARDWARE SHOWN FOR REFERENCE

REVISIONS					
REV	ECO	DESCRIPTION	DATE	BY	APPR
A1	-	RELEASE NEW DRAWING	06NOV18	SULLEN	TOMMY
A2	-	UPDATE DRAWING	18FEB19	SULLEN	TOMMY
A3	-	ADD SPACE LIMIT DIMENSION	15JAN20	SULLEN	TOMMY



SEE SHEET 2 & 3		DESCRIPTION		ITEM
QUANTITY	PART NUMBER	MATERIALS LIST		
UNLESS OTHERWISE SPECIFIED				
1) All dimensions are in metric (mm).				
2) Tolerances are as follows:				
1 PL DEC ±0.30 Fractions ±1/64				
2 PL DEC ±0.15 Angles ±1°				
3) Note reference =				
MATERIAL SPECIFICATIONS:		SIGNATURES DATE		
PROCESS SPECIFICATIONS:		DRAWN: SULENZHANG 15JAN20		
NEXT ASSY:		CHECKED: ORIONLI 16JAN20		
		ENGINEER:		
		APPROVAL: TOMMY.XIE 17JAN20		
		CUSTOMER:		
		THIS DRAWING IS SUPPLIED FOR INFORMATION ONLY. DESIGN FEATURES, SPECIFICATIONS AND PERFORMANCE DATA SHOWN HEREON ARE THE PROPERTY OF THE AMPHENOL CORPORATION. NO RIGHTS OF REPRODUCTION ARE IMPLIED. ALL DIMENSIONS ARE SUBJECT TO NORMAL MANUFACTURING VARIATIONS.		
SCALE:	NONE	SIZE:	B C-	REVISION:
		DWG NO.:	ATM13-12PX-12PX-BMXX	A3
SINE SYSTEMS - www.amphenol-sine.com 44724 Morley Drive Clinton Township, MI 48036				
ARMOR IPX RECEPTACLE ATM HEADER, 2 x 12 POSITIONS, SIZE 20 CONTACT				
SHEET 4 OF 4				

TITLE: ARMOR IPX RECEPTACLE ATM HDR, 2x12 POSITIONS, SIZE 20 CONTACT
DWG NO.: ATM13-12PX-12PX-BMXX
REV: A3
SH: 4
OF: 4

X-ON Electronics

Largest Supplier of Electrical and Electronic Components

Click to view similar products for [Automotive Connectors](#) category:

Click to view products by [Amphenol](#) manufacturer:

Other Similar products are found below :

[003-018-000](#) [60403001](#) [60993906-B](#) [M902-2131](#) [M902-2161](#) [72.330.1035.1](#) [73.353.4028.0](#) [F119300-B](#) [F166900](#) [F258300-B](#) [F358300-B](#)
[F407400](#) [F444110](#) [F487000](#) [F509500B-B](#) [827153-1](#) [8N1515-32-24P](#) [9-1326729-8](#) [925474-1](#) [928905-1](#) [964562-4](#) [968782-1](#) [GT17SA-8DS-](#)
[HU](#) [98891-1012](#) [98947-1016](#) [12004475-L](#) [12010290](#) [12010309-B](#) [12015454](#) [12020219-B](#) [12020308](#) [12041318-B](#) [12052225-L](#) [12052466](#)
[12059125](#) [12064869](#) [12004327-B](#) [12010503-B](#) [12015308](#) [12015384](#) [12015909](#) [1-21030-1](#) [12041254](#) [12041318](#) [12047946-B](#) [12047957](#)
[12047957-L](#) [12059473](#) [12066261](#) [12110546](#)