

**INDUSTRIAL@AMPHENOL**  
TRUSTED GLOBALLY

Amphenol Sine Systems

# AT|Series™ Repair Kit

## Manual and Re-order Information



INTERCONNECTING YOUR WORLD

## **We are Amphenol Sine Systems.**

We are a global leader in providing you with interconnection options and solutions.

We fulfill the needs of Industrial, Factory Automation, Heavy Duty and Custom-design markets.

Amphenol Sine Systems, with its 42 year history, 325+ employees worldwide and 3 global facilities, draws on the extensive worldwide resources of Amphenol Corporation to find solutions for our customers. Our engineers design innovative combinations of industry standard connectors and application specific shielding components to create assembly systems that set the standards for performance, reliability, and cost effectiveness. Our engineering, materials, and manufacturing organizations meet the high standards imposed by ISO 9001 as well as many customer specific quality systems. Our performance has earned us ship to stock and world class performance awards from many major OEMs.



Amphenol Sine Systems is a division of Amphenol Corporation ([www.amphenol.com](http://www.amphenol.com)), one of the largest interconnect solution suppliers in the world. Amphenol Corporation supplies a wide range of product solutions worldwide. Amphenol Corporation, and all its subsidiaries, design, manufacture and market electrical, electronic and fiber-optic connectors, interconnect systems and coaxial and specialty cable. Amphenol has a diversified presence in high growth markets including: Information Technology and Data Communications Equipment, Mobile Devices, Mobile Networks, Broadband Communication, Military and Commercial Aerospace, Industrial and Automotive.

© 2011 Amphenol Sine Systems Corporation. Every effort has been made to ensure that the information contained in this catalog is accurate at the time of publication. Specifications or information stated in this publication are subject to change without notice.

## Re-order Contact Information

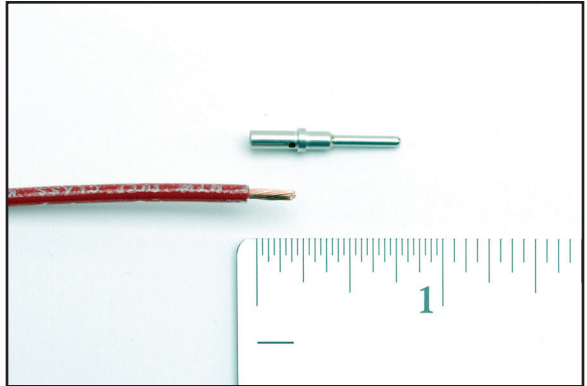
To re-order replacement receptacles, plugs, wedges, contacts, seals, manuals or tools for your AT Series™ Repair Kit, please contact your Sales Representative.

Part Number	Description
<b>AT04-2P</b>	2 Pin Receptacle
<b>AT04-3P</b>	3 Pin Receptacle
<b>AT04-4P</b>	4 Pin Receptacle
<b>AT04-6P</b>	6 Pin Receptacle
<b>AT04-08PA</b>	8 Pin Receptacle
<b>AT04-12PA</b>	12 Pin Receptacle
<b>AT06-2S</b>	2 Pin Plug
<b>AT06-3S</b>	3 Pin Plug
<b>AT06-4S</b>	4 Pin Plug
<b>AT06-6S</b>	6 Pin Plug
<b>AT06-08SA</b>	8 Pin Plug
<b>AT06-12SA</b>	12 Pin Plug
<b>AW2P</b>	2 Pin Receptacle Wedge
<b>AW3P</b>	3 Pin Receptacle Wedge
<b>AW4P</b>	4 Pin Receptacle Wedge
<b>AW6P</b>	6 Pin Receptacle Wedge
<b>AW8P</b>	8 Pin Receptacle Wedge
<b>AW12P</b>	12 Pin Receptacle Wedge
<b>AW2S</b>	2 Pin Plug Wedge
<b>AW3S</b>	3 Pin Plug Wedge
<b>AW4S</b>	4 Pin Plug Wedge
<b>AW6S</b>	6 Pin Plug Wedge
<b>AW8S</b>	8 Pin Plug Wedge
<b>AW12S</b>	12 Pin Plug Wedge
<b>AT62-201-16141</b>	Female Contacts - Machined
<b>AT60-202-16141</b>	Male Contacts - Machined
<b>AT-RT100</b>	Contact/Wedge Removal Tool
<b>AT-RCT100</b>	Contact Crimp Tool
<b>A114017</b>	Blank Plug (Seal) 16Awg
<b>AT-RM100</b>	Repair Manual
<b>AT-RK100</b>	AT Series™ Repair Kit - (Complete Kit)

## Crimping Wires

1.

Strip 1/4" insulation from wire.



2.

Insert contact into Contact Crimp Tool with barrel up.



3.

Insert stripped end of wire into contact.



4.

Squeeze handles of Contact Crimp Tool until proper seating has taken place.



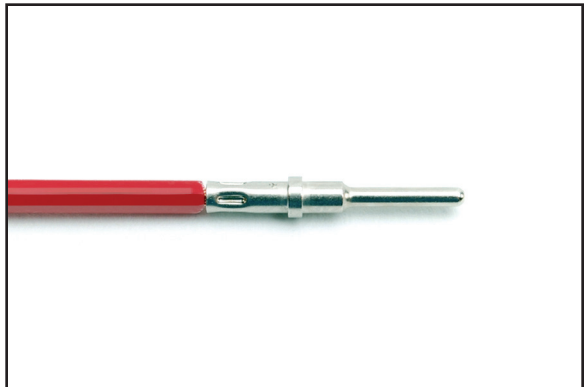
5.

Release handles and remove the crimped contact from the Contact Crimp Tool.



6.

Inspect the contact to ensure all wire strands have been crimped properly.



## Plugs - **Contact and Wedge Insertion**

1.

Grasp crimped contact approx. one inch behind the contact barrel.



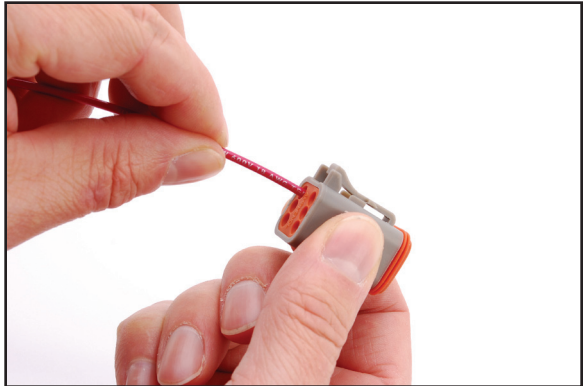
2.

Hold plug with rear grommet facing you.



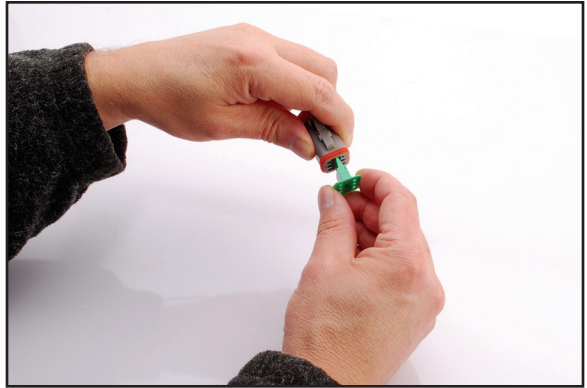
3.

Push contact straight into plug until a 'click' is felt. A slight tug will confirm placement.



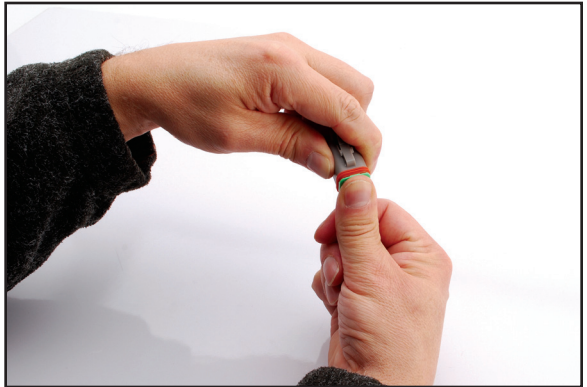
4.

Insert wedge into plug.



5.

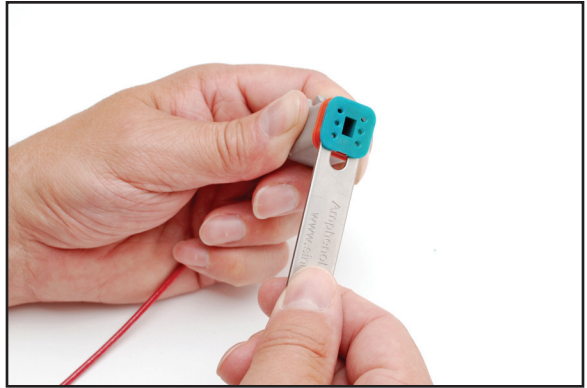
A 'click' will be felt when the wedge is fully installed.



## Plugs - **Contact and Wedge Removal**

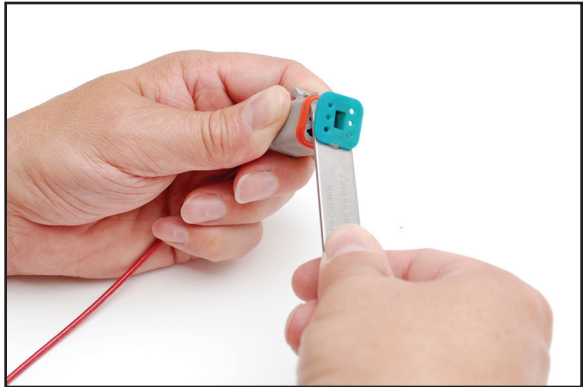
1.

Remove wedge by inserting the Wedge Removal Tool underneath the lip of the wedge.



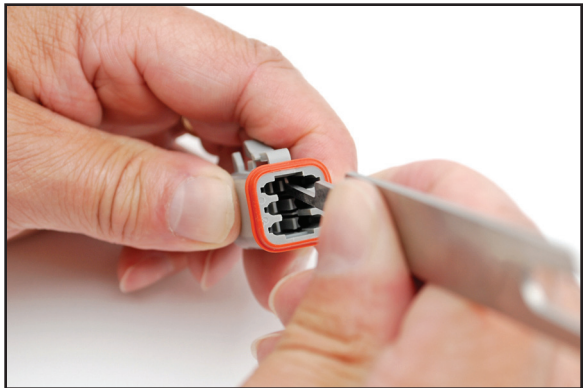
2.

Twist the Wedge Removal Tool until wedge 'pops' out of plug.



3.

Turn over the Wedge Removal Tool to use the Contact Removal Tool to remove the contact inside the plug.





## Receptacles - **Contact and Wedge Insertion**

1.

Grasp crimped contact approx. one inch behind the contact barrel.



2.

Hold receptacle with rear grommet facing you.



3.

Push contact straight into receptacle until a 'click' is felt. A slight tug will confirm placement.



Receptacles - **Contact and Wedge Insertion**, *continued*

4.

Insert wedge into receptacle.



5.

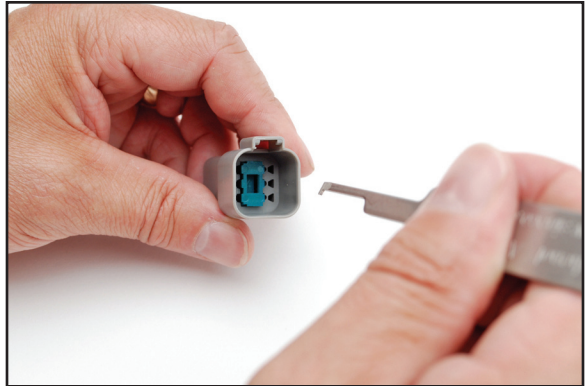
A 'click' will be felt when the wedge is fully installed.



## Receptacles - **Contact and Wedge Removal**

1.

Remove wedge by inserting the Wedge Removal Tool into the opening of the wedge.



2.

Pull the wedge until it 'pops' out of receptacle.

Remove the wedge from receptacle.



3.

Turn over the Wedge Removal Tool to use the Contact Removal Tool to remove the contact inside the receptacle.





---

## Amphenol Sine Systems

**North America Headquarters**  
44724 Morley Drive  
Clinton Township, MI 48036  
Toll Free: 1.800.394.7732  
Fax: 1-586.465.1216  
Email: [sine\\_info@sineco.com](mailto:sine_info@sineco.com)

## X-ON Electronics

Largest Supplier of Electrical and Electronic Components

*Click to view similar products for [Automotive Connectors](#) category:*

*Click to view products by [Amphenol](#) manufacturer:*

Other Similar products are found below :

[003-018-000](#) [60403001](#) [60993906-B](#) [M902-2131](#) [M902-2161](#) [72.330.1035.1](#) [73.353.4028.0](#) [F119300-B](#) [F166900](#) [F258300-B](#) [F358300-B](#)  
[F407400](#) [F444110](#) [F487000](#) [F509500B-B](#) [827153-1](#) [8N1515-32-24P](#) [9-1326729-8](#) [925474-1](#) [928905-1](#) [964562-4](#) [968782-1](#) [GT17SA-8DS-](#)  
[HU](#) [98891-1012](#) [98947-1016](#) [12004475-L](#) [12010290](#) [12010309-B](#) [12015454](#) [12020219-B](#) [12020308](#) [12041318-B](#) [12052225-L](#) [12052466](#)  
[12059125](#) [12064869](#) [12004327-B](#) [12010503-B](#) [12015308](#) [12015384](#) [12015909](#) [1-21030-1](#) [12041254](#) [12041318](#) [12047946-B](#) [12047957](#)  
[12047957-L](#) [12059473](#) [12066261](#) [12110546](#)