

INDUSTRIAL@ AMPHENOL
TRUSTED GLOBALLY

Amphenol Sine Systems

AT|Series™ Repair Kit

Manual and Re-order Information



INTERCONNECTING YOUR WORLD

We are Amphenol Sine Systems.

We are a global leader in providing you with interconnection options and solutions.

We fulfill the needs of Industrial, Factory Automation, Heavy Duty and Custom-design markets.

Amphenol Sine Systems, with its 42 year history, 325+ employees worldwide and 3 global facilities, draws on the extensive worldwide resources of Amphenol Corporation to find solutions for our customers. Our engineers design innovative combinations of industry standard connectors and application specific shielding components to create assembly systems that set the standards for performance, reliability, and cost effectiveness. Our engineering, materials, and manufacturing organizations meet the high standards imposed by ISO 9001 as well as many customer specific quality systems. Our performance has earned us ship to stock and world class performance awards from many major OEMs.



Amphenol Sine Systems is a division of Amphenol Corporation (www.amphenol.com), one of the largest interconnect solution suppliers in the world. Amphenol Corporation supplies a wide range of product solutions worldwide. Amphenol Corporation, and all its subsidiaries, design, manufacture and market electrical, electronic and fiber-optic connectors, interconnect systems and coaxial and specialty cable. Amphenol has a diversified presence in high growth markets including: Information Technology and Data Communications Equipment, Mobile Devices, Mobile Networks, Broadband Communication, Military and Commercial Aerospace, Industrial and Automotive.

© 2011 Amphenol Sine Systems Corporation. Every effort has been made to ensure that the information contained in this catalog is accurate at the time of publication. Specifications or information stated in this publication are subject to change without notice.

Re-order Contact Information

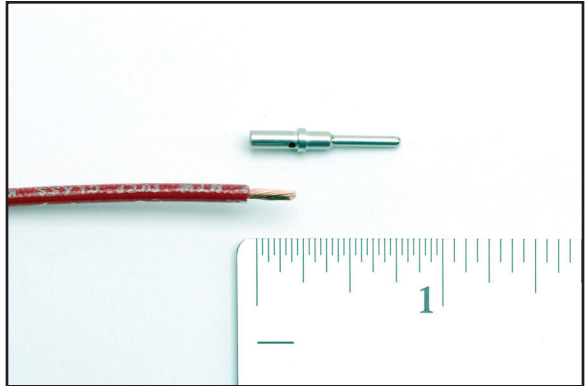
To re-order replacement receptacles, plugs, wedges, contacts, seals, manuals or tools for your AT Series™ Repair Kit, please contact your Sales Representative.

Part Number	Description
AT04-2P	2 Pin Receptacle
AT04-3P	3 Pin Receptacle
AT04-4P	4 Pin Receptacle
AT04-6P	6 Pin Receptacle
AT04-08PA	8 Pin Receptacle
AT04-12PA	12 Pin Receptacle
AT06-2S	2 Pin Plug
AT06-3S	3 Pin Plug
AT06-4S	4 Pin Plug
AT06-6S	6 Pin Plug
AT06-08SA	8 Pin Plug
AT06-12SA	12 Pin Plug
AW2P	2 Pin Receptacle Wedge
AW3P	3 Pin Receptacle Wedge
AW4P	4 Pin Receptacle Wedge
AW6P	6 Pin Receptacle Wedge
AW8P	8 Pin Receptacle Wedge
AW12P	12 Pin Receptacle Wedge
AW2S	2 Pin Plug Wedge
AW3S	3 Pin Plug Wedge
AW4S	4 Pin Plug Wedge
AW6S	6 Pin Plug Wedge
AW8S	8 Pin Plug Wedge
AW12S	12 Pin Plug Wedge
AT62-201-16141	Female Contacts - Machined
AT60-202-16141	Male Contacts - Machined
AT-RT100	Contact/Wedge Removal Tool
AT-RCT100	Contact Crimp Tool
A114017	Blank Plug (Seal) 16Awg
AT-RM100	Repair Manual
AT-RK100	AT Series™ Repair Kit - (Complete Kit)

Crimping Wires

1.

Strip 1/4" insulation from wire.



2.

Insert contact into Contact Crimp Tool with barrel up.



3.

Insert stripped end of wire into contact.



4.

Squeeze handles of Contact Crimp Tool until proper seating has taken place.



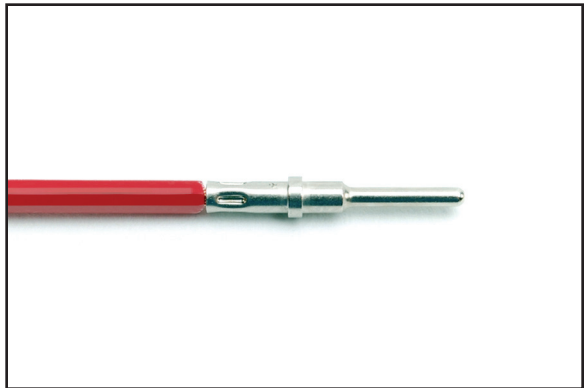
5.

Release handles and remove the crimped contact from the Contact Crimp Tool.



6.

Inspect the contact to ensure all wire strands have been crimped properly.



Plugs - **Contact and Wedge Insertion**

1.

Grasp crimped contact approx. one inch behind the contact barrel.



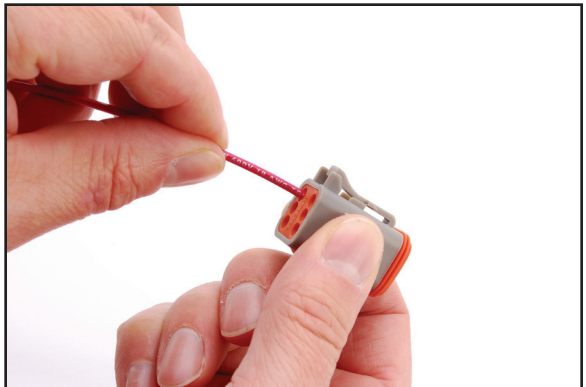
2.

Hold plug with rear grommet facing you.



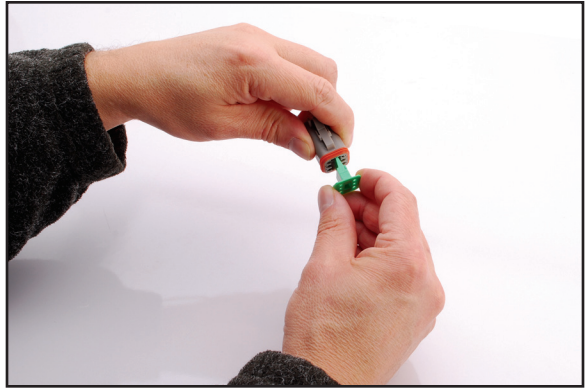
3.

Push contact straight into plug until a 'click' is felt. A slight tug will confirm placement.



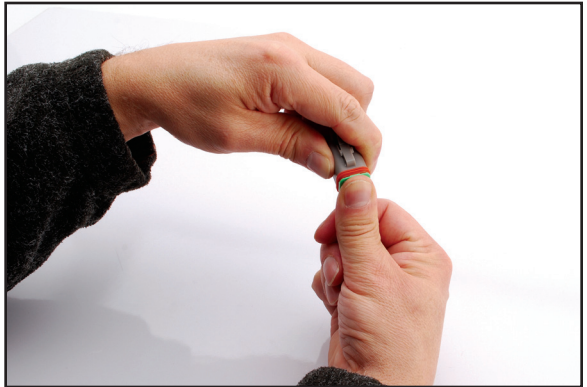
4.

Insert wedge into plug.



5.

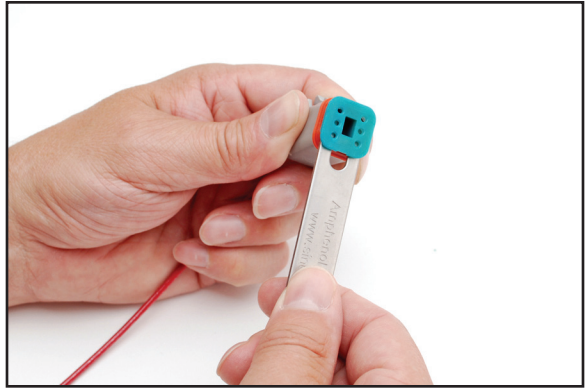
A 'click' will be felt when the wedge is fully installed.



Plugs - **Contact and Wedge Removal**

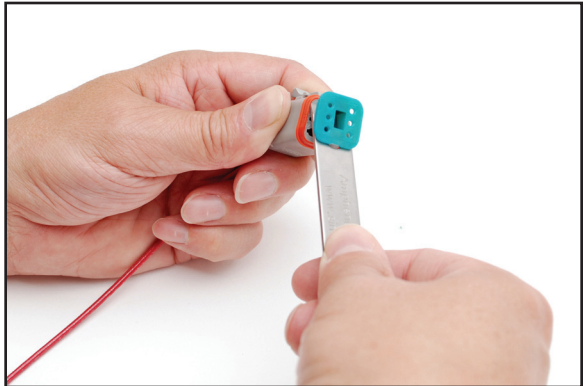
1.

Remove wedge by inserting the Wedge Removal Tool underneath the lip of the wedge.



2.

Twist the Wedge Removal Tool until wedge 'pops' out of plug.



3.

Turn over the Wedge Removal Tool to use the Contact Removal Tool to remove the contact inside the plug.



Receptacles - **Contact and Wedge Insertion**

1.

Grasp crimped contact approx. one inch behind the contact barrel.



2.

Hold receptacle with rear grommet facing you.



3.

Push contact straight into receptacle until a 'click' is felt. A slight tug will confirm placement.



Receptacles - **Contact and Wedge Insertion**, *continued*

4.

Insert wedge into receptacle.



5.

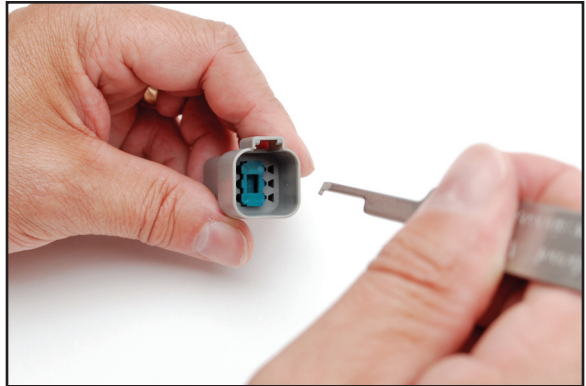
A 'click' will be felt when the wedge is fully installed.



Receptacles - **Contact and Wedge Removal**

1.

Remove wedge by inserting the Wedge Removal Tool into the opening of the wedge.



2.

Pull the wedge until it 'pops' out of receptacle.

Remove the wedge from receptacle.



3.

Turn over the Wedge Removal Tool to use the Contact Removal Tool to remove the contact inside the receptacle.





Amphenol Sine Systems

North America Headquarters
44724 Morley Drive
Clinton Township, MI 48036
Toll Free: 1.800.394.7732
Fax: 1-586.465.1216
Email: sine_info@sineco.com

X-ON Electronics

Largest Supplier of Electrical and Electronic Components

Click to view similar products for [Extraction, Removal & Insertion Tools](#) category:

Click to view products by [Amphenol](#) manufacturer:

Other Similar products are found below :

[M8196914-08](#) [768211-2](#) [809-131](#) [844751-2](#) [8-59558-2](#) [91018-1](#) [12014013](#) [12093647](#) [1-21048-0](#) [R282867020](#) [12093078](#) [12180559](#) [1-21048-6](#) [12121897](#) [DCF.91.405.5LT](#) [1322](#) [13549852](#) [15314260](#) [15313892](#) [15350698](#) [15350707](#) [15430130](#) [1643916-1](#) [1-679532-0](#) [1976593-3](#) [OUTEXT-0321](#) [2-1579008-3](#) [2-1579008-4](#) [229694-7](#) [231106-1](#) [241469](#) [91040-3](#) [91040-7](#) [965004-000](#) [965069-000](#) [1738219-1](#) [ET-JL05-16](#) [FG 0300 146 3000](#) [FIT-6](#) [210S048](#) [2-1579007-9](#) [231879-1](#) [CF-008025-000](#) [312138-3](#) [RJ11FODE](#) [356-162](#) [M8196914-10](#) [4-1579018-0](#) [483249-1](#) [5-1579007-2](#)