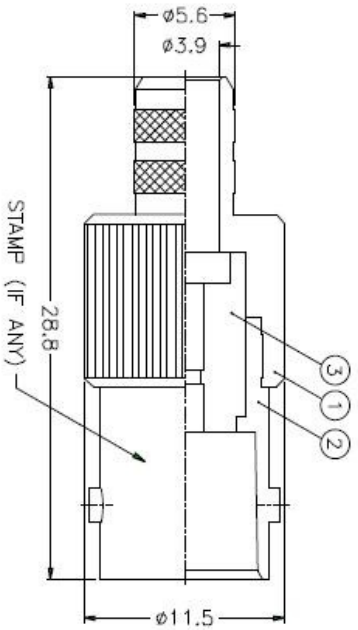
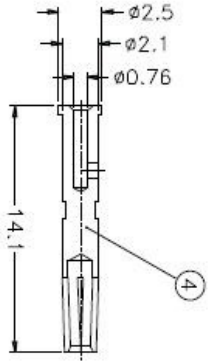
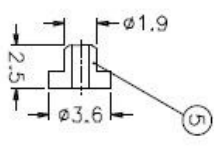
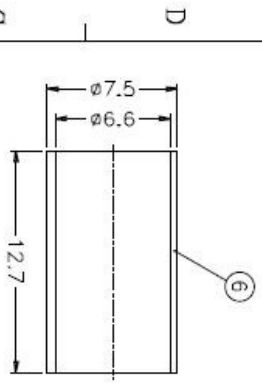
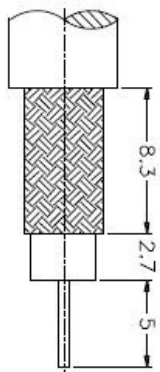


ISS	ZONE	DESCRIPTION \ PER REQUEST \ DATE
1		



NOTES: FINISH (PLATING THICKNESS IN MICRO-INCHES)

1. BRASS PER Q2-B-526
2. NICKEL PL. 100 MIN. THICK OVER COPPER STRIKE
3. PHOSPHOR BRONZE PER Q2-B-750
4. GOLD PL. 3 MIN. THICK OVER NICKEL PL. 100 MIN. THICK
5. PTFE MIL-P-19468
6. JIS H5250, C 2700

1. CRIMPED FERRULE
 HEX CRIMP SIZE .255"
 2. CRIMPED CONTACT PIN
 HEX CRIMP SIZE .058"

NO.	DESCRIPTION	MATERIAL	FINISH	Q'TY	DRAWING NO.	SCALE	3/1	ISSUE	A	FILE NO.
1	HOUSING	NOTE 1	NOTE 2	1	B70000-1-56/59	1000-2000				10-11-01*
2	BODY	NOTE 1	NOTE 2	1	B74000-2	315-1000				10-11-01*
3	INSULATOR	NOTE 5	NATURAL	1	B74000-3T-75	120-315				10-11-01*
4	CONTACT PIN	NOTE 3	NOTE 4	1	B74000-8-25/076	6-30				10-11-01*
5	INSULATOR	DEBRIN	NATURAL	1	B50000-11-36/1	0-8				10-11-01*
6	FERRULE	NOTE 6	NOTE 2	1	FR-75/66X127	0-8				10-11-01*

Amphenol

PART NO. B6121A1-NT3G-3-75
 TITLE BNC CRIMP JACK
 DRAWING NO. KJ-B6121A1-NT3G-62AU-75
 ITEM NO.

DIMENSIONS ARE IN MILLIMETERS
 UNLESS OTHERWISE SPECIFIED
 TOLERANCES:
 0.0-8 ±0.2
 8-30 ±0.4
 30-120 ±0.6
 120-315 ±1
 315-1000 ±1.6
 1000-2000 ±2.4

1 2 3 4 5 6 7 8

X-ON Electronics

Largest Supplier of Electrical and Electronic Components

Click to view similar products for [RF Connectors / Coaxial Connectors](#) category:

Click to view products by [Amphenol](#) manufacturer:

Other Similar products are found below :

[R125315120](#) [8915-1511-000](#) [89674-0827](#) [5916-1103-603](#) [0106-001-000](#) [6-0001-3](#) [6001-7071-019](#) [6002-7051-003](#) [6002-7551-202](#) [6059674-1](#) [619550-1](#) [630059-000](#) [M39012/25-0021](#) [M39012/79-3008](#) [M39030/3-01N](#) [M39030/3-03N](#) [M3933/25-29N](#) [M3933/25-36N](#) [6500-7071-046](#) [6501-1071-002](#) [M83723/72W24576](#) [M83723/72W2457N](#) [6769](#) [CX050L2AQ](#) [7002-1541-010](#) [7002-1572-002](#) [7003-1572-002](#) [7004-1512-000](#) [7009-1511-004](#) [7010-1511-000](#) [7029-1511-060](#) [7101-1541-010](#) [7101-1571-002](#) [7105-1521-002](#) [7145-1521-002](#) [7209-1511-011](#) [7210-1511-012](#) [7210-1511-015](#) [7210-1511-019](#) [7210-1511-040](#) [7225-1512-050](#) [7242-1511-000](#) [73137-5015](#) [73251-0111](#) [73251-0672](#) [73276-1501](#) [73366-0013](#) [73404-2300](#) [73413-6080](#) [734151610](#)