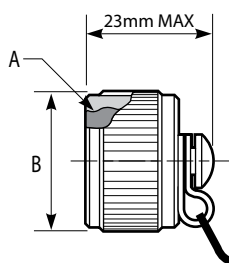
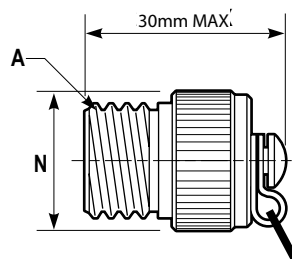


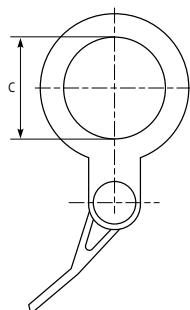
PROTECTION CAPS



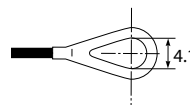
Protection cap for receptacles equipped with metallic chain, nylon cord or stainless steel rope



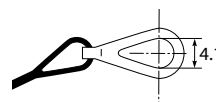
Protection cap for plugs equipped with metallic chain, nylon cord or stainless steel rope



Termination of the chain, rope (RO type) or cord for jam nut receptacle protection caps

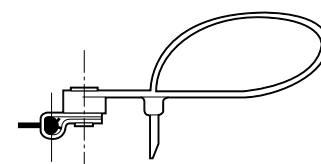


Termination of the cord or rope (R type) for square flange receptacle protection caps



Termination of the chain for square flange receptacle and plug protection caps

Termination of the cord for plugs protection caps



| Cap type | Metallic chain length (mm) | Nylon cord length (mm) | Stainless steel rope length (mm) |
|------------------------|----------------------------|------------------------|----------------------------------|
| BEC/BER for receptacle | 152 | 105 | 127 |
| BF for plug | 127 | 160 | 127 |

| Shell size | | A thread 0.1P-0.3L-TS Class 2B (inches) | B Dia Max (mm) | C Dia Min (mm) | N Dia Max (mm) |
|-----------------------------|----------|--|-------------------------|-------------------------|-------------------------|
| MIL-DTL-38999 Series III | Amphenol | | | | |
| A | 9 | .6250 | 22.23 | 17.86 | 22.73 |
| B | 11 | .7500 | 25.40 | 21.44 | 25.40 |
| C | 13 | .8750 | 28.58 | 25.81 | 29.74 |
| D | 15 | 1.0000 | 31.75 | 28.98 | 32.99 |
| E | 17 | 1.1875 | 36.53 | 32.16 | 36.47 |
| F | 19 | 1.2500 | 38.10 | 35.33 | 39.19 |
| G | 21 | 1.3750 | 41.28 | 38.51 | 42.42 |
| H | 23 | 1.5000 | 44.45 | 41.68 | 45.39 |
| J | 25 | 1.6250 | 47.63 | 44.86 | 48.62 |

ORDERING INFORMATION

| Cap Series | B | EC | N | TV | W | 15 |
|---|---|----|---|----|---|----|
| Protection cap type | | | | | | |
| EC: For square flange receptacle | | | | | | |
| ER: For jam nut receptacle | | | | | | |
| F: For plug | | | | | | |
| Wire type | | | | | | |
| N: Nylon cord | | | | | | |
| Blank for metallic chain | | | | | | |
| R: Jacketed stainless steel rope | | | | | | |
| RO: Jacketed stainless steel rope with washer end (only for plug) | | | | | | |
| Connector type | | | | | | |
| Finish | | | | | | |
| B: Bronze | | | | | | |
| F: Electroless nickel plated, aluminium version | | | | | | |
| W: Olive drab cadmium plated aluminium version | | | | | | |
| Z: Green zinc cobalt plated aluminium | | | | | | |
| ZN: Black zinc Nickel aluminium from Amphenol Europe | | | | | | |
| Corresponding connector shell size: | | | | | | |
| 09/11/13/15/17/19/21/23/25 | | | | | | |



For stainless steel caps, please consult us

X-ON Electronics

Largest Supplier of Electrical and Electronic Components

Click to view similar products for [Circular MIL Spec Tools, Hardware & Accessories](#) *category:*

Click to view products by [Amphenol](#) *manufacturer:*

Other Similar products are found below :

[0113-201-2025](#) [600-079-06](#) [600-146-06](#) [M10-101983-183](#) [M10-454396-008](#) [602GB18808](#) [CS3102A-22-14PW](#) [M2887615-CD](#) [627-009](#)
[M38999/9-19B](#) [630A007NF083A](#) [630B007M051A](#) [630BJ003NF032H](#) [637-149NF04B](#) [M39029/29-215](#) [6408-203V-09273](#) [6426-201-11343](#)
[650FS002NF16](#) [660-008NF14S7-01](#) [660-009M22H8-03](#) [660-013NF19U6-210](#) [660-015M10S6-17](#) [660-015NF10S5-01](#) [660-015NF14R3.5-01](#)
[660-023NF19H6-19](#) [660-024NF11S12-01](#) [660-024NF11S3-01](#) [660-024NF17S4-109](#) [660-050XM17F4-01](#) [660-068NF25R6-30G](#) [660-](#)
[070M23S8-04](#) [660-073MTCH9-20](#) [M83723/61-18W](#) [M83723/61-218R](#) [M83723/61-224W](#) [667-084-23C](#) [667-084-35C](#) [667-224NF16](#) [687-](#)
[697NF-1](#) [M85049/94-10-A](#) [M85049/96-7-A](#) [M855282-10A01A](#) [M85528/2-10B](#) [M855282-18A01A](#) [M85528/2-22A01A](#) [M85528/2-22AA](#)
[710HS460NF2508](#) [780-001-22G12-SK](#) [780-002-19G12-SK](#) [780-002-20G12SK](#)