

# Amphenol®



## Amphe-BTS

Amphenol Industrial Operations introduces a new power connector family, the Amphe-BTS. This innovative connector series is designed for the next generation of base stations.

Amphe-BTS is a circular connector based on the MIL-C-26482 series 2 with clip retention contacts. Features brass shell construction for greater corrosion resistance, provides EMI shielding, is shock & vibration resistant, and uses screw termination contacts making it well suited for field installation.

We offer the Amphe-BTS in our standard 2-way 48V DC power configuration but also manufacture a 48V DC 2-way reverse gender and a 3-way 400VDC/250V AC connector. Standard current for the two pole version is 20A per contact while the three pole version supplies 10A per contact.

Contact Amphenol Industrial Operations for more product details.

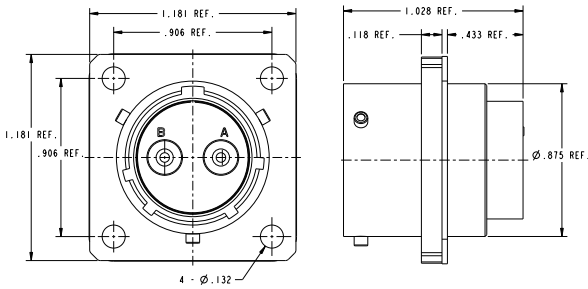
### Features:

- UL / TUV certified
- Brass shell construction with tin/nickel plating
- Bayonet locking
- 20A per contact (two pole); 10A per contact (three pole)
- 360° EMI shielding
- Working temperature of -55°C to + 85°C
- IP67 rated
- Receptacle with crimp contacts
- Plug with screw termination contacts for field installation
- Cable sealing range is 7-18mm OD
- UL94-V0
- ISO 21207 Method B 5 cycles for corrosion test
- IEC61984 and IEC60950-22 or IEC61984 certified

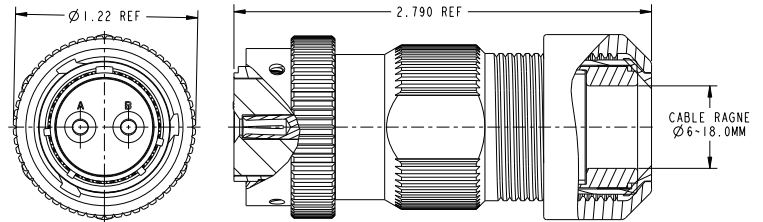
[www.amphenol-industrial.com](http://www.amphenol-industrial.com)



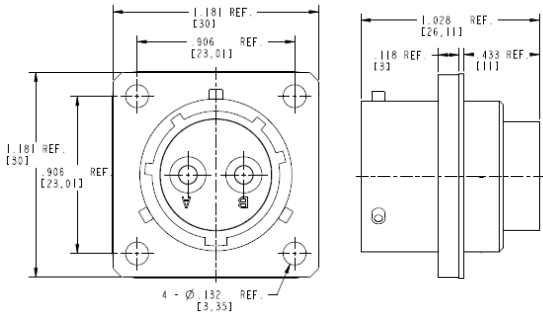
C10-694780-02P  
 2 WAY 48 VDC MALE PANEL RECEPTACLE  
 IEC61984 & IEC60950-22 Certified



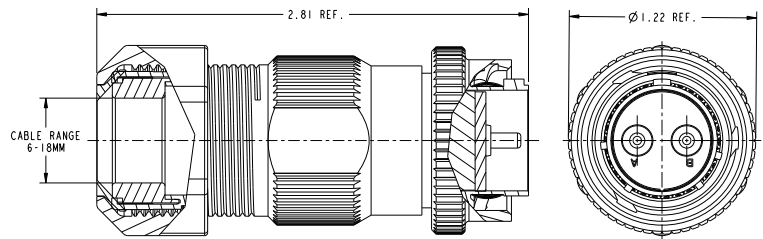
C10-694780-02S  
 2 WAY 48 VDC FEMALE STRAIGHT PLUG  
 IEC61984 & IEC60950-22 Certified



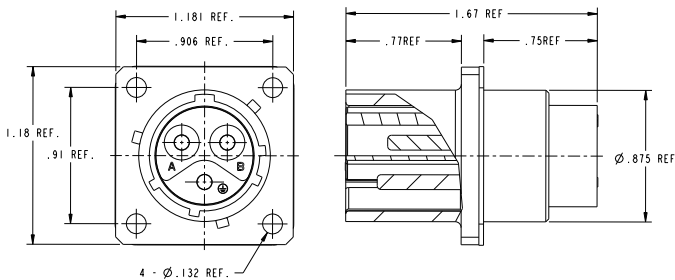
C10-694781-02S  
 2 WAY 48 VDC FEMALE PANEL RECEPTACLE  
 IEC61984 & IEC60950-22 Certified



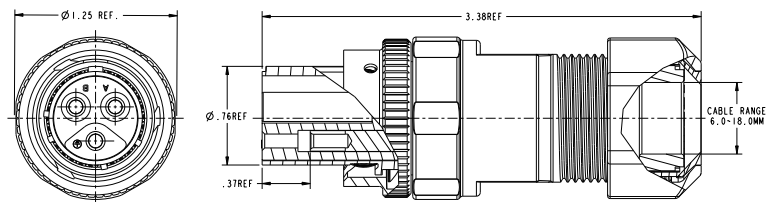
C10-694781-02P  
 2 WAY 48 VDC MALE STRAIGHT PLUG  
 IEC61984 & IEC60950-22 Certified



C10-694782-03P  
 3 WAY 400VDC/250V AC MALE PANEL RECEPTACLE  
 IEC61984 Certified



C10-694782-03S  
 3 WAY 400VDC/250V AC STRAIGHT PLUG  
 IEC61984 Certified



Notice: Specifications are subject to change without notice. Contact your nearest Amphenol Corporation Sales Office for the latest specifications. All statements, information and data given herein are believed to be accurate and reliable but are presented without guarantee, warranty, or responsibility of any kind, expressed or implied. Statements of suggestions concerning possible use of our products are made without representation of warranty that any such use is free of patent infringement and are not recommendations to infringe any patent. The user should assume that all safety measures are indicated or that other measures may not be required. Specifications are typical and may not apply to all connectors.

For further information on your individual application requirements, contact: Amphenol Corporation

North America:  
 Amphenol Industrial Operations  
 180 N. Freeport Drive, Plant 4  
 Nogales, AZ 85621  
 Tel: (520) 285-5130  
 Fax: (520) 285-5134  
 Email: rpedrazzini@amphenol-aio.com

Europe:  
 Amphenol Industrial Operations Europe  
 Via Barbaiana 5  
 1-20020 Lainate (MI) Italy  
 Tel: +39 02 93254.204  
 Fax: +39 02 93254.444  
 Email: info@amphenol-aio.com

Middle East:  
 Amphenol Middle East Enterprises FZE  
 Office C-37 PO Box 21107  
 Ajman Free Zone, UAE  
 Tel: +9716-7422494  
 Fax: +9716-7422941  
 Email: ameeffe@eim.ae

Asia:  
 Amphenol Technology Shenzhen Ltd  
 Block 5 Fuan 2nd Industrial Park  
 Dayang Rd, Fuyong Baoan  
 Baoan, Shenzhen, China 518103  
 Tel: +86 755 2881 8389  
 Fax: +86 755 2991 8310  
 Email: enquiry@amphenol-aio.com

## X-ON Electronics

Largest Supplier of Electrical and Electronic Components

*Click to view similar products for [Circular MIL Spec Connector](#) category:*

*Click to view products by [Amphenol](#) manufacturer:*

Other Similar products are found below :

[0025-262-542](#) [0025-264-3014](#) [58-570121-04S](#) [0134-202-1200](#) [0134-207-1206](#) [0134-207-1800](#) [0134-207-2207](#) [0134-213-0806](#) [0134-213-1007](#) [0134-213-1009](#) [0134-213-1208](#) [0134-213-1800](#) [0134-213-2209](#) [0025-258-000](#) [015-9516-002](#) [60-042722-19P](#) [0114-201-1278](#)  
[602GB06EG24-61SN](#) [0134-201-1207](#) [0134-201-1806](#) [0134-201-2006](#) [0134-201-2007](#) [0134-201-2010](#) [0134-202-1400](#) [0134-207-0809](#) [0134-207-1208](#) [0134-207-2009](#) [0134-213-1006](#) [6104-207-2302](#) [6104-208-1902](#) [6131-202-19149P](#) [6131-204-21149P](#) [6131-207-13149P](#) [6131-208-13149P](#) [6131-209-17149P](#) [6131-210-11149P](#) [6131-211-19149P](#) [6131-216-19149P](#) [6131-220-25149P](#) [6131-259-11149P](#) [6131-259-21149P](#)  
[6131-259-23149P](#) [6131-263-19149P](#) [6131-265-17149P](#) [6131-265-19149P](#) [CS3102A-20-15P](#) [CS3102A-20-15S](#) [CS3102C18-4P-472](#)  
[CS3106A-20-29P](#) [CS3106A-20-74P](#)