

Cable termination junction box

CB series

SPECIFICATIONS

Channels:	
Single channel sensors	2 or 4
CBT triaxial sensors	2
Input connectors:	
Single channel sensors	terminal block, 3 positions per channel
Triaxial sensors	G: terminal block, 5 positions per channel M12: 5 socket connector per sensor
Output connectors:	
Single channel sensors	BNC: 1 jack per channel, electrically isolated
Triaxial sensors	M12: 5 pin connector per channel, electrically isolated
Material	ABS
Dimensions (W x H x D)	4.69 x 3.125 x 2.15 in. (11.91 x 7.94 x 5.46 cm)
Temperature range	-40° to +82°C
Rating	NEMA 4X/IP66

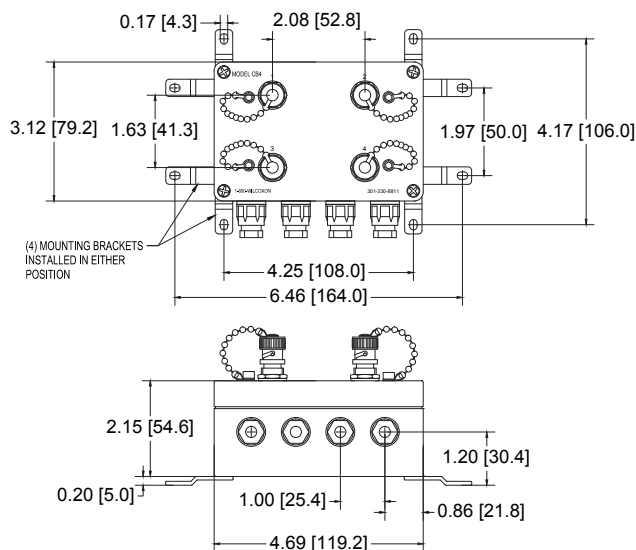


Key features

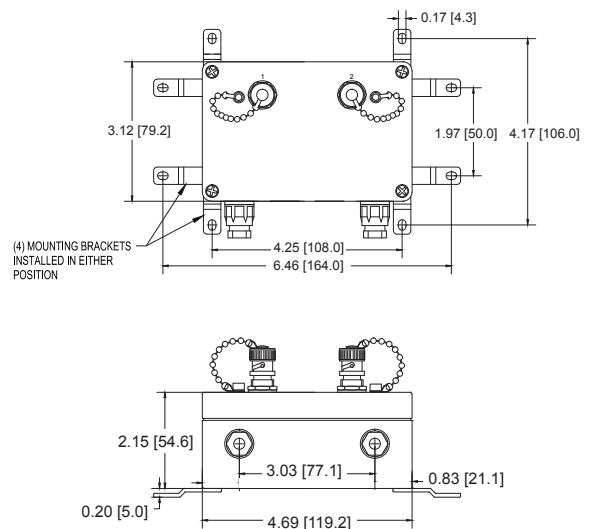
- Low cost monitoring solution
- Models available for use with triaxial sensors (CBT models)
- NEMA 4X rated
- Manufactured in ISO 9001 facility

Mounting accessories supplied: 4x feet; 4x screws; 4x washers; termination plugs (1 per channel); installation instructions

CB4



CB2 series



Models available

Model	Sensor	Channels	Inputs	Outputs
CB2	standard	2	cable grips	BNC connector
CBT2-M12-G	triaxial	2	cable grips	M12 connector
CBT2-M12-M12	triaxial	2	M12 connector	M12 connector
CB4	standard	4	cable grips	BNC connector



Note: Due to continuous process improvement, specifications are subject to change without notice. This document is cleared for public release.

X-ON Electronics

Largest Supplier of Electrical and Electronic Components

Click to view similar products for [Electrical Enclosures](#) category:

Click to view products by [Amphenol](#) manufacturer:

Other Similar products are found below :

[120-401](#) [120-905](#) [120-909](#) [120-403](#) [130-004](#) [MR-25L+](#) [30-8739](#) [PIP-11774SCREW](#) [30-9715](#) [30-9777-BU](#) [105-905](#) [110-901](#) [A16N12BLP](#)
[110-406](#) [110-401](#) [110-403](#) [110-404](#) [120-405](#) [34861601](#) [106-009](#) [106-505](#) [111-005](#) [127-909](#) [106-502](#) [130-503](#) [127-401](#) [127-455](#) [9511150](#)
[9820011](#) [137-455](#) [130-001](#) [105-904](#) [120-404](#) [137-005](#) [130-505](#) [127-406](#) [AB 1,5.0](#) [AB2.0](#) [ABM.0](#) [73345601](#) [F-MP](#) [M-MP](#) [PAT 12040](#)
[9121230](#) [79541301](#) [19001001](#) [19001101](#) [TM 1224](#) [79503401](#) [79506401](#)