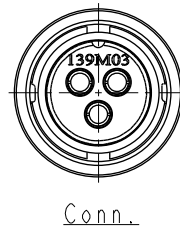
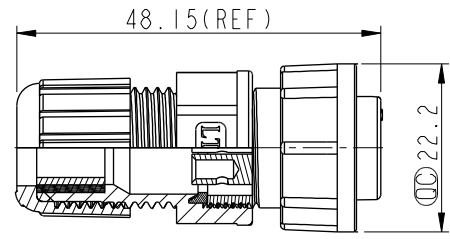
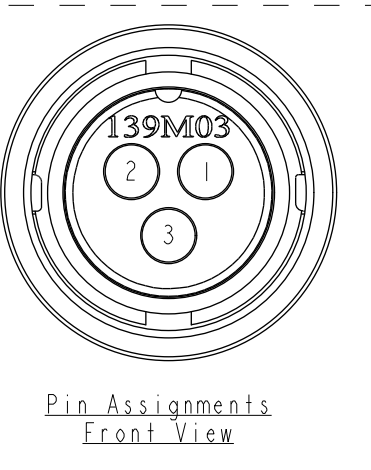
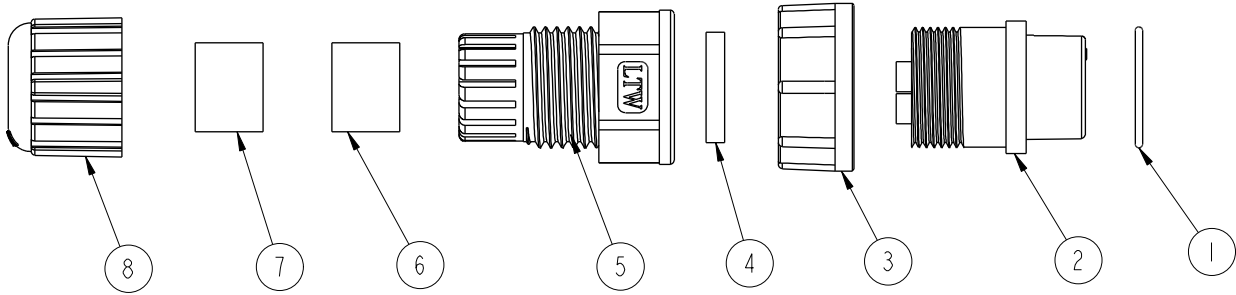


REV.	ECN NO.	DATE	SIGN	DESCRIPTION

ALTW
DCC. DEPT.
CONFIDENTIAL
2012-05-09
ISSUED

ALTW
CONFIDENTIAL
2012-04-09
R&D DEPT.



- Note:
- * \varnothing Important Dimension To Check.
 - * Waterproof Rate: IP67
 - * Connector: Black, Nylon+GF
 - * Female Pin: Copper Alloy, Gold Plated
 - * O-Ring: EPDM
 - * Lock Nut: Nylon+GF, Black
 - * Gasket: EPDM, Bk
 - * Clamp Ring: Nylon, Black
 - * Sealing Nut: Nylon, Black
 - * Seals B1 for Cable OD: \varnothing 7.6mm- \varnothing 9.6mm
 - * Seals B2 for Cable OD: \varnothing 4.0mm- \varnothing 7.6mm
 - * One Set Unassembled in One PE Bag

UNIT:mm		TITLE Middle Assy Lock 3Pin F Conn F Pin			<h1>Amphenol LTW</h1> <p>安費諾亮泰企業股份有限公司</p>	ITEM NO	CC-03BFFA-LL7001	DRAWN BY	SamChang	DATE	2012-04-09		
		SCALE	1:1	SIZE		A4	SHEET	1	OF	1	DWG NO	CC-03BFFA-LL7001	CHECKED BY
TOLERANCE	.X ±0.25	REV.	A	WC-REV.	A.2	CUSTOMER	ALTW	APPROVED BY	Lion	DATE	2012-05-09		
.XX ±0.1													
.XXX ±0.05													
ANGLES ±1°													

THIS DOCUMENT IS SUBJECT TO CHANGE WITHOUT NOTICE. IT IS CONFIDENTIAL AND A PROPERTY OF AMPHENOL LTW. DISCLOSURE TO THIRD PARTY HAS TO BE AUTHORIZED BY AMPHENOL LTW.

X-ON Electronics

Largest Supplier of Electrical and Electronic Components

Click to view similar products for [Standard Circular Connector](#) category:

Click to view products by [Amphenol](#) manufacturer:

Other Similar products are found below :

[5M2530B10P](#) [600259N006](#) [600273N007](#) [6134-336-13149](#) [6134-337-11149](#) [6134-337-2390](#) [6134-341-17149](#) [6280-4SG-516](#) [6280-7SG-3DC](#)
[6290](#) [6291A](#) [66200A-10](#) [680-SMG](#) [681-PMG](#) [CXS3102A14S2P](#) [CXS3102A181S](#) [7251-6SG-300](#) [7271-6SG-300](#) [7282-3PG-300-CH3](#) [75-](#)
[474014-05S](#) [75-474618-01S](#) [75-474618-04S](#) [799539-000](#) [MI8-SE](#) [805-005-07NF11-19PC](#) [805-005-07NF15-7PA](#) [8280-4PG-516](#) [8280-7PG-](#)
[519](#) [8282-5PG-519](#) [836783-1](#) [MP-4102-25P-C](#) [862256-1](#) [864019-2](#) [866857-1](#) [867865-1](#) [PT01SP-14-18P](#) [PT08P-14-5S](#) [PTSF06SE-14-12S](#)
[120-1833-000](#) [QCM019PC2DC012B](#) [1-2069279-1](#) [121583-0217](#) [121667-0020](#) [129591AU](#) [1000B BULK](#) [RD10A16-19-P6CS051/1](#)
[RD10A20-31-P8CS051/1](#) [RD16A14-12-S6CS051/2](#) [1301240290](#) [1301240347](#) [1301860202](#)