

Amphenol CTF-10G-1

Amphenol Aerospace adds CTF-10G-1 to the CTF (Copper to Fiber) Media Converter Product Family. This product line is rugged, flexible, and affordable with many options available.

CTF-10G-1 is an integrated hybrid connector and media converter that couples high speed copper technology with M29504 fiber technology. Now you can transfer high speed data seamlessly from copper to fiber and fiber to copper.

Features & Benefits:

- 1 channel (1 Tx, 1 Rx)
- D38999 Shell Size 11
- 10.3125 Gbps
- XAUI interface
- Built-in Test
- 12 dB worst case between transmit power and receive sensitivity
- Up to 10G Ethernet, 8G Fibre Channel, PCI-Express 3.0, DVI and more

Fiber Interface:

- Uses M29504/5 Fiber Termini

Copper Interface:

- Samtec EQDP Series

Ruggedization:

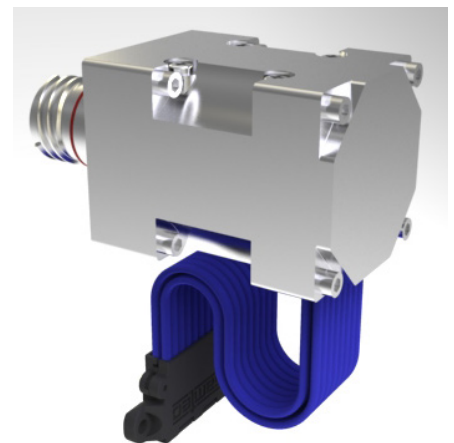
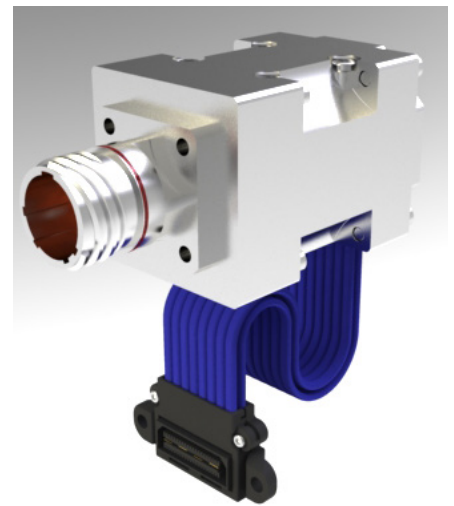
- Industry standard rugged transmitters and receivers -40°C to +85°C
- Qualified for Airborne and Ground Vehicles

Flexibility:

- Options for ARINC-801, MT, PC Tail Copper and more

Contact Jared Sibrava for more information at jsibrava@amphenol-aa.com or call 607-563-5372

Amphenol[®]
Aerospace



X-ON Electronics

Largest Supplier of Electrical and Electronic Components

Click to view similar products for [Media Converters](#) category:

Click to view products by [Amphenol](#) manufacturer:

Other Similar products are found below :

[EIS-PS-US](#) [CF-020010-009](#) [EIS-EXTEND-C-EU](#) [DT5002F](#) [WT32-ETH01](#) [USR-K6](#) [WC-PD13F012A](#) [WC-PD30B050G](#) [CF-020011-2N9](#)
[EKI-1751PI-M-AE](#) [EKI-1751PI-R-AE](#) [EKI-2541M-AE](#) [EKI-2541MI-AE](#) [EKI-2541S-AE](#) [EKI-2541SI-AE](#) [EKI-2741F-BE](#) [EKI-2741FI-BE](#)
[EKI-2741FL-EU-AE](#) [EKI-2741FL-US-AE](#) [EKI-2741LX-AE](#) [CA-628485-D84](#) [CA-628485-D85](#) [CF-020008-000](#) [CF-020008-001](#) [CF-020010-721](#) [CF-020010-97X](#) [CF-020011-1N9](#) [CF-020011-32N](#) [CF-020011-330](#) [CF-901201-097](#) [CTC-55F005-NW](#) [102MCE-SC-15](#) [102MC-SC](#)
[850-15526](#) [855-10932](#) [856-15410](#) [857-11912](#) [IMC-350I-MMST-PS-A](#) [IMC-350I-SE-PS-A](#) [IMC-350-MMST-PS-A](#) [IMC-350I-M8ST-PS-A](#)
[IMC-350I-MM-A](#) [IMC-350I-SE-A](#) [IMC-350I-M8-A](#) [IMC-370-MM-PS-A](#) [IMC-370I-MM-PS-A](#) [IMC-370I-MM-A](#) [IMC-370I-SST-PS-A](#)
[CTM1051KAT](#) [CTM8251KAT](#)