

GigaBlox Rugged

Small 4 Port 10/100/1000 Mbps Ethernet Switch



DESCRIPTION

GigaBlox Rugged is a very small layer 2 unmanaged and managed ethernet switch that fits four 10/100/1000Mbps copper ethernet ports in an ultra-compact 50mm x 55mm form factor. GigaBlox Rugged is designed to be a more rugged and more capable upgrade to our GigaBlox product and is designed for space, weight and price-sensitive (SWaP) industrial, mobile and military applications.

FEATURES

- 4 x 10/100/1000M (10/100/1000BASE-T) non-blocking ethernet ports
- Input voltage range from 5 to 60V
- Reverse protected voltage input
- Transient protected voltage input
- -40°C to 105°C Operation Range (using a heatsink)
- 50 mm x 55 mm board size
- Molex PicoBlade or PicoClasp connectors for power and ports
- Automatic MDI-X crossover
- Unmanaged (out-the-box) functionality
- Port Activity Indicators
- Embedded NOR Flash to support customized firmware upload for managed switch functions



HOW TO ORDER

| | | |
|--------------------|------------|-----------------|
| Part Number | CF-02BBGGR | GigaBlox Rugged |
|--------------------|------------|-----------------|

GENERAL SPECIFICATIONS

| | |
|------------------------------|---------------------------------|
| Voltage Input | 8V to 60V DC (65V absolute max) |
| Voltage Output | N/A |
| Supported Protocols | 10/100/1000BASE-T |
| Packet Buffer | 1.75 MBits |
| Power Consumption | 1W idle, 4W at full data rate |
| Weight | 20 grams |
| Size | 50mm x 55mm x 16.2mm |
| Operating Temperature | -40°C to +110°C |
| Storage Temperature | -55°C to +125°C |

GENERAL OPERATING INSTRUCTIONS

GigaBlox Rugged is designed for use in harsh environments, operating from a nominal supply voltage of 24V, but with the ability to operate from as low as 5V and as high as 60V.

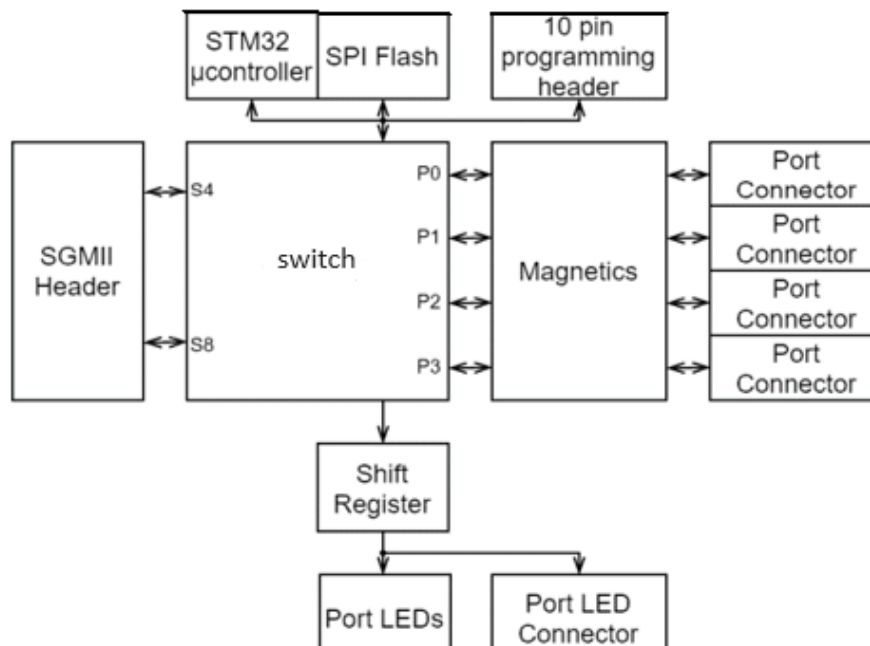
In the simplest case of an unmanaged switch application, GigaBlox Rugged can be operated immediately by following the following steps.

- 1) Apply a voltage between 5V to 60V to the voltage input terminals.
- 2) Connect external devices to the ethernet ports using RJ45 to Picoblade cables.
- 3) GigaBlox Rugged will automatically begin auto negotiation with connected devices and begin receiving and forwarding packets to/from all connected devices.

SAFETY INFORMATION

- This device can operate on voltages near and above 60V. Please read this manual before operating.
- This device is provided “as is”. In-application testing prior to integration is recommended.
- This device is provided as an electronic circuit board, and requires integration into chassis for full ingress protection.
- Do not use this product in wet environments without integrating into a chassis.
- Do not operate this product beyond the rated temperature and voltages.

BLOCK DIAGRAM



INCLUDED EQUIPMENT

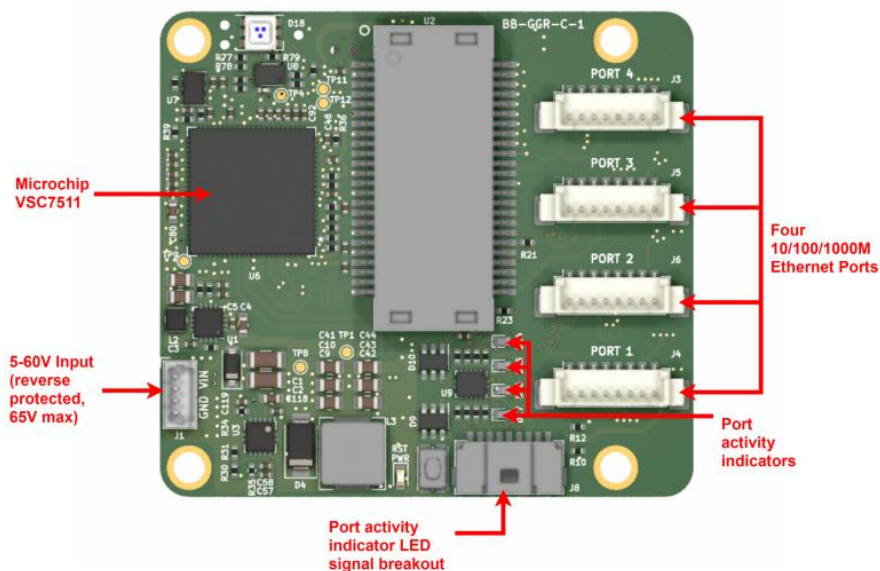
- 1 x GigaBlox Rugged board
- 4 x Molex PicoBlade to RJ45 4-way Shielded Twisted Pair cables (300mm)
- 1 x Molex PicoBlade Power Cable to bare, tinned leads (300mm)
- 1 x 13mm x 13mm x 10mm heat sink

RoHS Certification of Compliance

The BotBlox SwitchBlox Rugged complies with the RoHS (Restriction of Hazardous Substances Directive) Certificate of Compliance.

HARDWARE INTERFACE

Board Map (front)



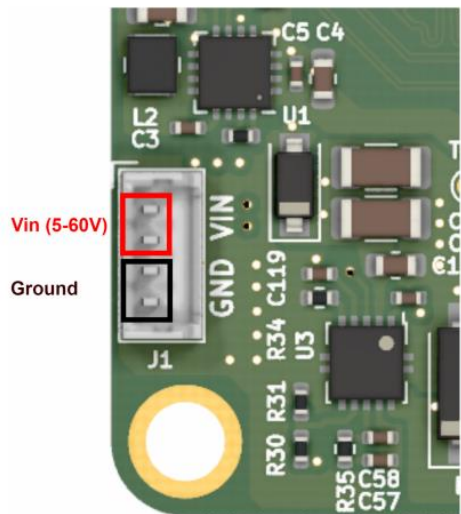
CONNECTORS AND PINOUTS

Voltage Input

The top left connector is the voltage input terminal. A four pin connector is used to allow the input voltage to be easily daisy chained between boards (two wires per power rail).

The voltage input has the following features:

- Voltage input can range from 5 to 60V
- Maximum allowable voltage of 65V
- Transient voltage protection above 66.3V
- Reverse polarity protection

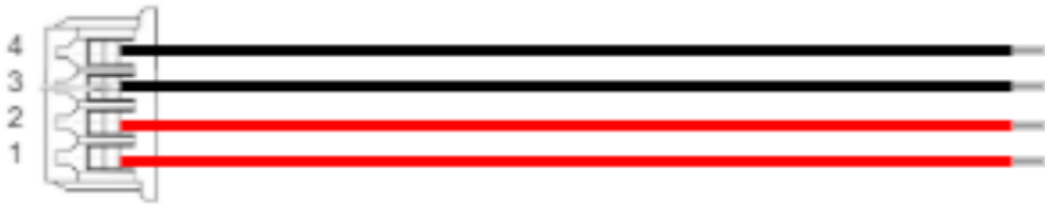


Voltage input header pinout

Connector Part Numbers

| Connector on board | Mating header | Crimp used | Wire used |
|--------------------|---------------|------------|---------------|
| 530470410 | 0510210400 | 500798000 | UL1061, 28AWG |

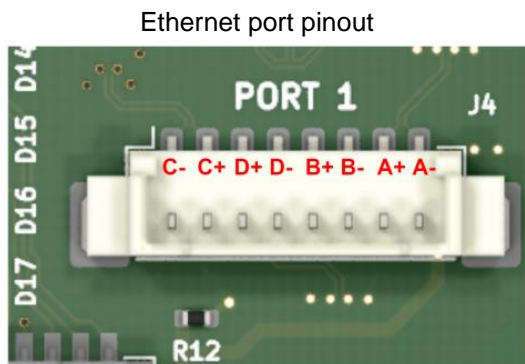
Cable Pinout



Voltage input cable pinout (red = V+, black = GND)

ETHERNET PORTS

There are four ethernet connectors on GigaBlox Rugged. Each connector has eight pins corresponding to the eight signals required for 1000BASE-T which are A-, A+, B-, B+, D-, D+, C+, C- and GND. The pin mapping of all four connectors is identical.

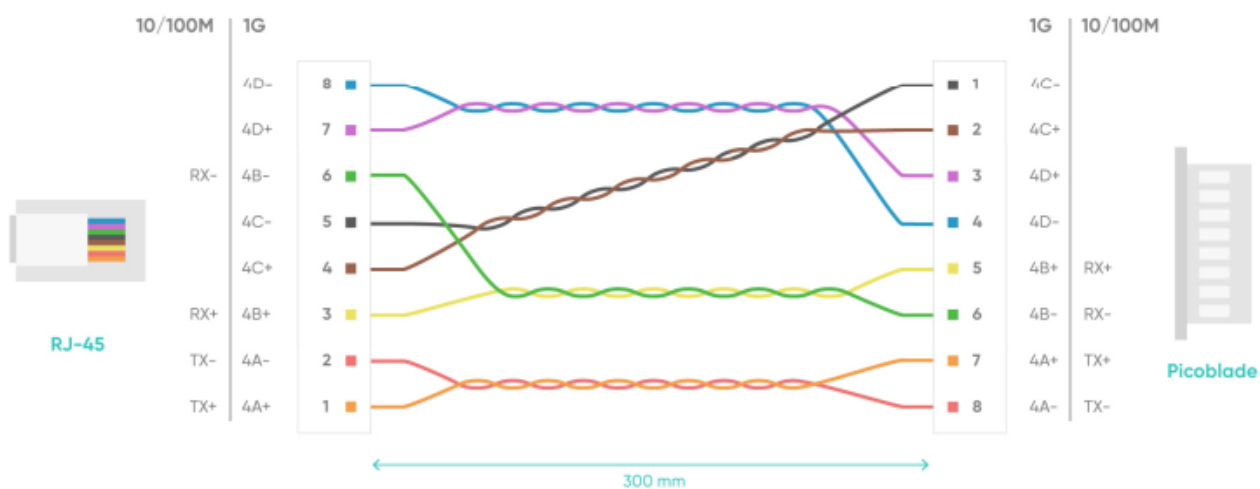


Connector Part Numbers

| Connector on board | Mating header | Crimp used | Wire used |
|--------------------|---------------|------------|---------------|
| 530470810 | 0510210800 | 500798000 | UL1061, 28AWG |

Ethernet Cable Pinout

8p Picoblade to RJ-45 8p 300mm

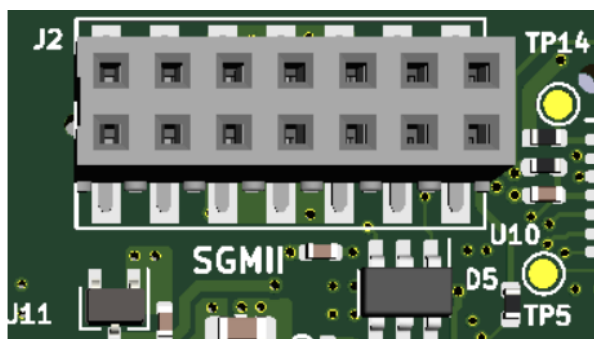


Extension SGMII header

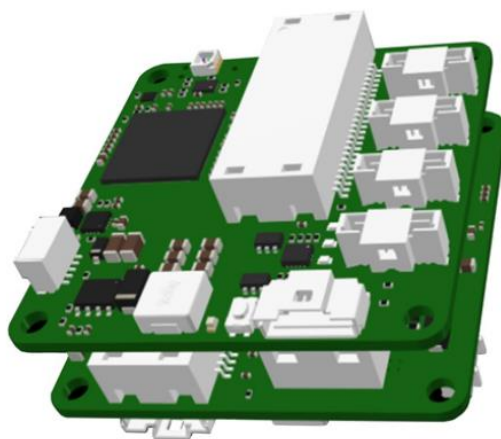
GigaBlox Rugged exposes SGMII on a stackable header, allowing two GigaBlox Rugged to be stacked together to create a 8 port switch (unmanaged and managed). At present this feature is non-functional but is expected to be enabled on future boards with a firmware update.

The stackable header also allows integration into any other board over SGMII. This can be used for network extension or in-band switch management.

To stack two boards, you will need a pin header (MPN:NRPN072PAEN-RC), 11mm hex standoffs (MPN:M1258-2545-SS), and M2.5 machine screws (MPN: 29300).



Extension SGMII header pinout



Stackable board (shown here using Rev A boards, the view is similar for Rev C boards)

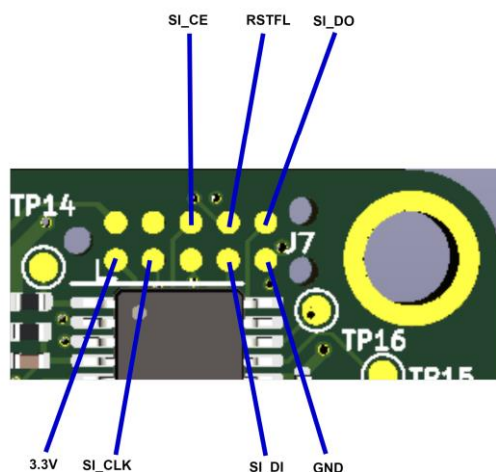
Programming Header

The device has two variants: Internal MCU and External MCU

Internal MCU variant

The switch supports four SPI chip-select pins, but only SI_nCS0 can be used for the internal CPU to boot from Flash. 4 Mbit external Flash is used in this variant, the part number is IS25LQ040B-JULE.

A programming header on the back of the board allows the IS25LQ040B on GigaBlox Rugged to be programmed.



External Flash programming header pinout

This header allows access to the SPI port on the onboard IS25LQ040B Flash, and requires the use of a 10-pin Tag connect TC2050-IDC-NL cable along with an in-circuit programmer such as the PRESTO or FORTE programmer. The table below shows the required connection between GigaBlox Rugged and programmer when programming.

GIGABLOX RUGGED AND PROGRAMMER CONNECTIONS

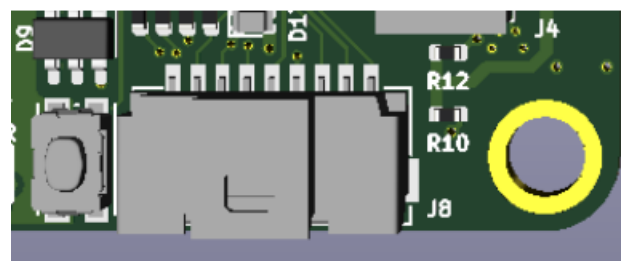
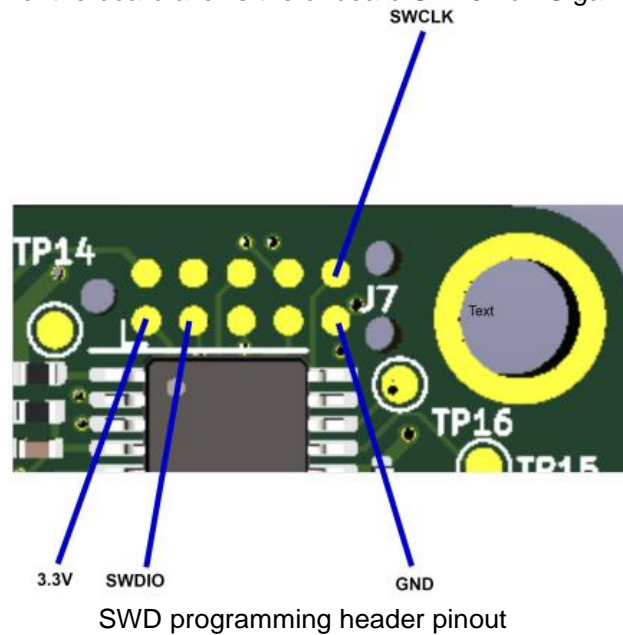
| PRESTO / FORTE | GigaBlox Rugged |
|----------------|-----------------|
| VDD | 3.3V |
| GND | GND |
| CLOCK | SI_CLK |
| MISO | SI_DI |
| DATA | SI_DO |
| GND | SPI_CS |
| VDD | RSFTL |

All GigaBlox Rugged boards of this variant use the F5 version of the Ferret Unmanaged Software from Microchip (VSC6825), which can be found in the link below.

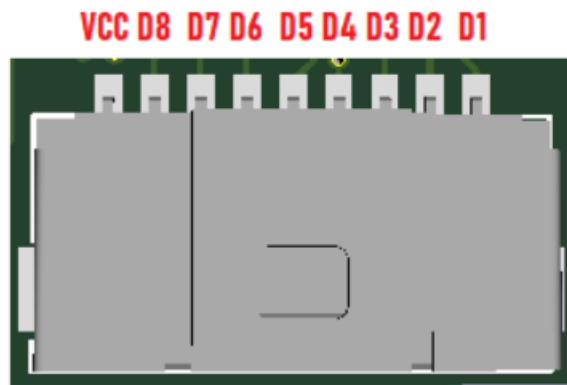
<https://github.com/microchip-ung/ocelot-vsc6825>

External MCU variant

A programming header on the back of the board allows the onboard STM32 on GigaBlox Rugged to be programmed over SWD.



External LED header



External LED header pinout

The anode of all external LEDs should connect to the 3.3V on the External LED header, and the cathode of the external LED should connect to the corresponding “EX_LED” connection on the header.

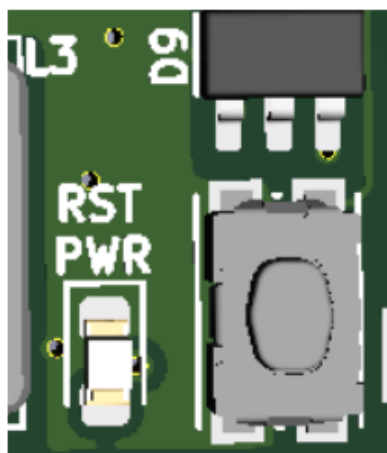
The part used on the board for this header is 2023960907, which mates with 5013300900. The externally connected LED does not require a series current limiting resistor, because a 1Kohm series resistor is already present on GigaBlox Rugged.

Other Interfaces

LEDs

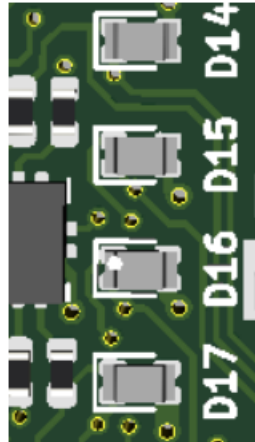
There are five LEDs on GigaBlox Rugged in total. Four of these LEDs are dual color LEDs, meaning there are a total of nine LED signals on this board. Eight of the LED signals can be taken off board.

The 3.3V Power Indicator LED (Green) indicates that voltage is present on the 3.3V line. It should be solid green in normal operation.



Power Indicator LED

Each Port Activity LED is a Red/Green dual color LED and each corresponds to a specific port. They indicate activity on each port and will blink when there is traffic on a port. They should be solid off when a port is not connected to any device, and they should blink under normal operation (orange blinking indicates a 1000 Mbps connection, red blinking indicates a 100Mbps connection). A solid LED indicates either constant traffic, or a fault with the port.



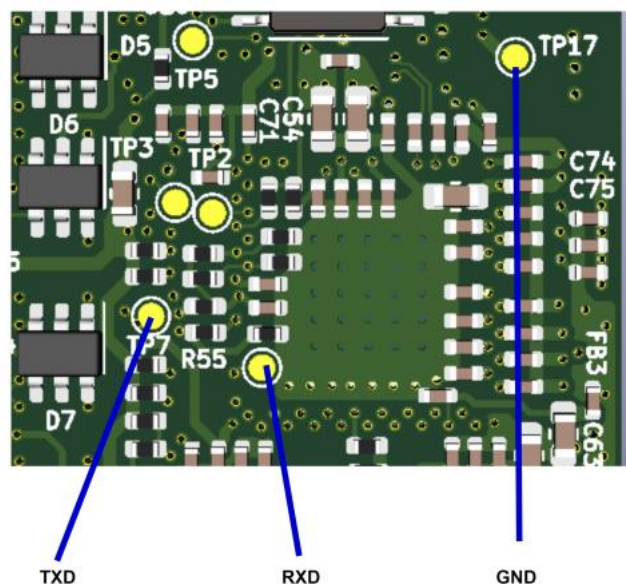
Port Activity Dual Red/Yellow-Green LED

SOFTWARE INTERFACES

UART

The VSC7511 supports two UART interfaces. The first UART is overlaid on GPIO_6 and GPIO_7, and is used by the software as the command line interface for debugging.

Switch Controller UART position



DEVICE CONFIGURATION

Unmanaged Switch

To use GigaBlox in an unmanaged application requires no configuration. Simply connect a voltage to the voltage input and connect downstream devices.

DEVICE CHARACTERISTICS

Operating Conditions

Absolute Maximum Ratings

| | |
|------------------------------|-----------------|
| Voltage Input Maximum | 65V |
| Storage temperature | -55°C - +125°C |
| Operating Temperature | -40°C - + 100°C |

Operating in these ranges will reduce the lifetime of the device.

Notice: Specifications are subject to change without notice. Contact your nearest Amphenol Corporation Sales Office for the latest specifications. All statements, information and data given herein are believed to be accurate and reliable but are presented without guarantee, warranty, or responsibility of any kind, expressed or implied. Statements or suggestions concerning possible use of our products are made without representation or warranty that any such use is free of patent infringement and are not recommendations to infringe any patent. The user should assume that all safety measures are indicated or that other measures may not be required. Specifications are typical and may not apply to all connectors.

AMPHENOL is a registered trademark of Amphenol Corporation.

©2023 Amphenol Corporation REV: PRELIMINARY

Amphenol
MILITARY HIGH SPEED

40-60 Delaware Avenue

Sidney, NY 13838

amphenol-aerospace.com | amphenolmao.com

Jared Sibrava • +1 (607) 643 - 1845 • jsibrava@amphenol-aao.com

amphenol-aerospace.com

X-ON Electronics

Largest Supplier of Electrical and Electronic Components

Click to view similar products for [Ethernet Modules](#) category:

Click to view products by [Amphenol](#) manufacturer:

Other Similar products are found below :

[I350T4V2](#) [GX-OD1612](#) [TDKEZW3](#) [I350T2V2](#) [V23993-USB1029A](#) [I350T2V2BLK](#) [FC6A-PH1](#) [EM-ETH-GATEWAY-IFS](#) [EK1122](#)
[EL1018](#) [EL1809](#) [EL2622](#) [EL2904](#) [EL3052](#) [EL3058](#) [EL3202](#) [EL6021](#) [EL6224](#) [EL6631](#) [EL6900](#) [EL9011](#) [EL9100](#) [KL1002](#) [KL1104](#)
[KL2404](#) [KL2602-0010](#) [KL3202](#) [KL3208-0010](#) [KL4408](#) [KL6821](#) [KL9100](#) [KL9200](#) [X710T2L](#) [RY9012A0000GZ00#002](#) [X710T4LBLK](#)
[BOXER-6614-A1M-1110](#) [ED-593](#) [WC-PD13C033I-1](#) [EL2809-0015](#) [WC-PD30A012C](#) [NS8](#) [NS4](#) [USR-K3](#) [USR-K2](#) [USR-TCP232-E2](#) [WC-](#)
[PD13S120B](#) [WC-PD13C012S](#) [WC-PD07H012C](#) [WC-PD30D240H](#) [WC-PD25C012T](#)