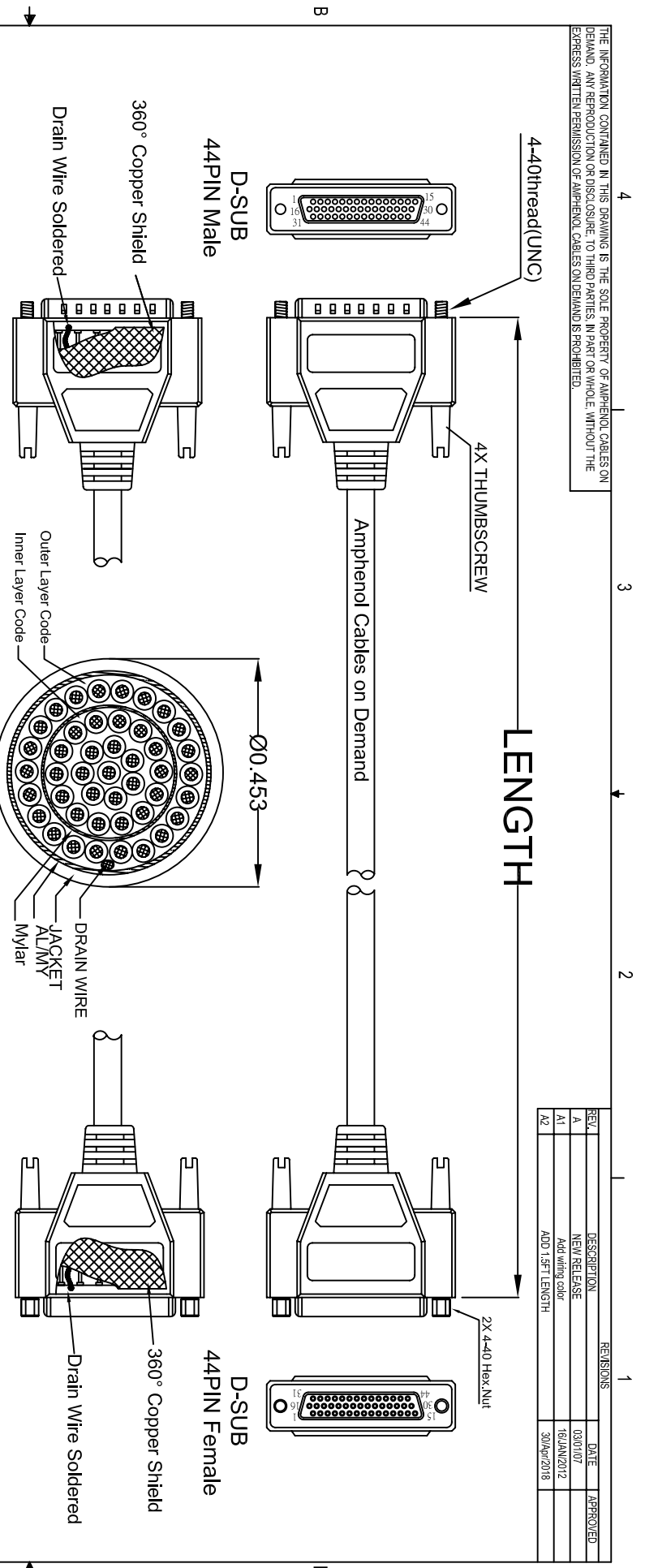


THE INFORMATION CONTAINED IN THIS DRAWING IS THE SOLE PROPERTY OF AMPHENOL CABLES ON DEMAND. ANY REPRODUCTION OR DISCLOSURE TO THIRD PARTIES IN PART OR WHOLE, WITHOUT THE EXPRESS WRITTEN PERMISSION OF AMPHENOL CABLES ON DEMAND IS PROHIBITED.

REV.	DESCRIPTION	REVISIONS	DATE	APPROVED
A	NEW RELEASE		03/01/07	
A1	Add wiring color		16/JAN/2012	
A2	ADD 1.5FT LENGTH		30/APR/2018	



**SEC A-A**

**LENGTH & P/N Table**

LENGTH	P/N	Cable Color
1.5FT ±0.8 inch	CS-DSDHD44MF0-001.5	GREY
2.5FT ±1 inch	CS-DSDHD44MF0-002.5	GREY
5FT ±2 inch	CS-DSDHD44MF0-005	GREY
10FT ±3 inch	CS-DSDHD44MF0-010	GREY
15FT ±3 inch	CS-DSDHD44MF0-015	GREY
25FT ±4 inch	CS-DSDHD44MF0-025	GREY
50FT ±8 inch	CS-DSDHD44MF0-050	GREY

PIN OUT: 1 TO 1			Inner Layer Code			Outer Layer Code		
Male	Female	Color	Male	Female	Color	Male	Female	Color
PIN1	PIN1	Black	PIN23	PIN23	Black	SHIELD	SHIELD	Drain Wire
PIN2	PIN2	Brown	PIN24	PIN24	Brown			
PIN3	PIN3	Red	PIN25	PIN25	Red			
PIN4	PIN4	Orange	PIN26	PIN26	Orange			
PIN5	PIN5	Yellow	PIN27	PIN27	Yellow			
PIN6	PIN6	Green	PIN28	PIN28	Green			
PIN7	PIN7	Blue	PIN29	PIN29	Blue			
PIN8	PIN8	Purple	PIN30	PIN30	Purple			
PIN9	PIN9	Gray	PIN31	PIN31	Gray			
PIN10	PIN10	White	PIN32	PIN32	White			
PIN11	PIN11	Pink	PIN33	PIN33	Pink			
PIN12	PIN12	Light Green	PIN34	PIN34	Light Green			
PIN13	PIN13	Black/White	PIN35	PIN35	Black/White			
PIN14	PIN14	Brown/White	PIN36	PIN36	Brown/White			
PIN15	PIN15	Red/White	PIN37	PIN37	Red/White			
PIN16	PIN16	Orange/White	PIN38	PIN38	Orange/White			
PIN17	PIN17	Green/White	PIN39	PIN39	Green/White			
PIN18	PIN18	Blue/White	PIN40	PIN40	Blue/White			
PIN19	PIN19	Purple/White	PIN41	PIN41	Purple/White			
PIN20	PIN20	Red/Black	PIN42	PIN42	Red/Black			
PIN21	PIN21	Orange/Black	PIN43	PIN43	Orange/Black			
PIN22	PIN22	Yellow/Black	PIN44	PIN44	Yellow/Black			



UNLESS OTHERWISE SPECIFIED DIMENSIONS ARE IN INCHES TOLERANCES ARE:

DECIMALS	±.X	ANGLES	±.X°
.X	±.XX		
.XX	±.XXX		
.XXX	±.XXX		

THIRD ANGLE PROJECTION

DATE	16/JAN/2012	DATE	16/JAN/2012
APPROVALS	LF	CHECKED	BA
DRAWN		RESP ENG	
DATE		DATE	

Amphenol Cables on Demand  
20 VALLEY ST. ENDCOTT, NY 13760

ASM CBL Deluxe High Density  
44PIN D-Sub MF

SIZE: DWG. NO. CS-DSDHD44MF0-XXX  
A

SCALE: SHEET OF

NOTES: UNLESS OTHERWISE SPECIFIED

## X-ON Electronics

Largest Supplier of Electrical and Electronic Components

*Click to view similar products for [D-Sub Cables](#) category:*

*Click to view products by [Amphenol](#) manufacturer:*

Other Similar products are found below :

[1200980218](#) [1200980067](#) [RB09P09P-006](#) [RB09P09P-012](#) [RB15P15P-006](#) [RB25P25P-006](#) [RB25P25P-012](#) [RB37P37P-024](#) [172-0906](#)  
[SHD15P15S-012](#) [SHD15P15S-036](#) [SHD15P15S-060](#) [ACL-10137-2MM](#) [RB09P09P-024](#) [319285-3](#) [RS422-OM2](#) [SHD26P26S-060](#)  
[SHD44P44S-036](#) [73-6210MM-6](#) [C200H-CN320-EU](#) [49725A 060S2](#) [73231-1321](#) [SDB-50AFFM-SL7A02](#) [49760A 060S2](#) [CS-](#)  
[DSDMDB09MM-050](#) [HDB-26AFFM-SL7A02](#) [30-9503P](#) [30-9522P](#) [73-6220MM-6](#) [1200980058](#) [1200980066](#) [1200980078](#) [1200980052](#)  
[1200980093](#) [1200980028](#) [1200980021](#) [1200980127](#) [SDB-09AFFM-SL7A02](#) [SDB-15AMMM-SL7A01](#) [BB-LDVYCBL](#) [83421-9286](#)  
[MLDM2L-21P-6K7-18B](#) [KSFD1](#) [MM-2J2-021-SS1-41WN](#) [HDB-78AMMM-SL7A05](#) [SDB-37AMMM-SL7A03](#) [SDB-15AFFM-SL7A05](#)  
[ACC-500-163-R](#) [172-1910](#) [2900907/21.4](#)