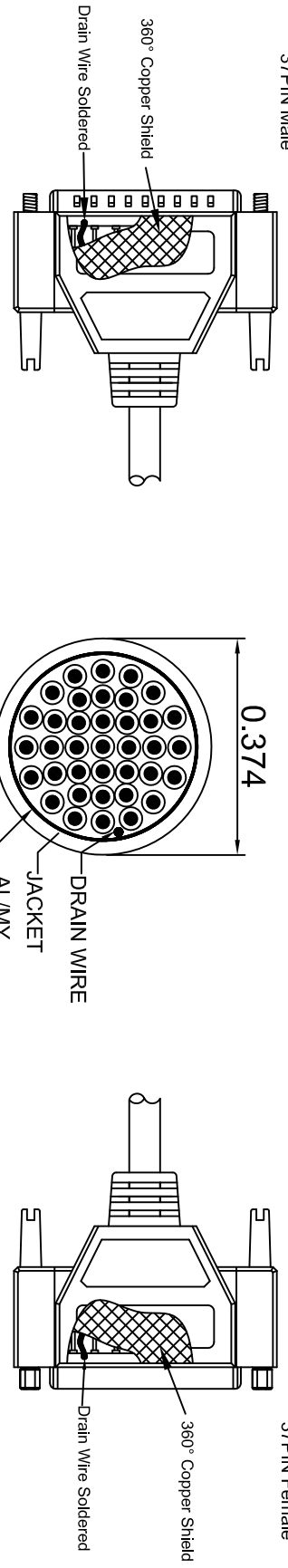
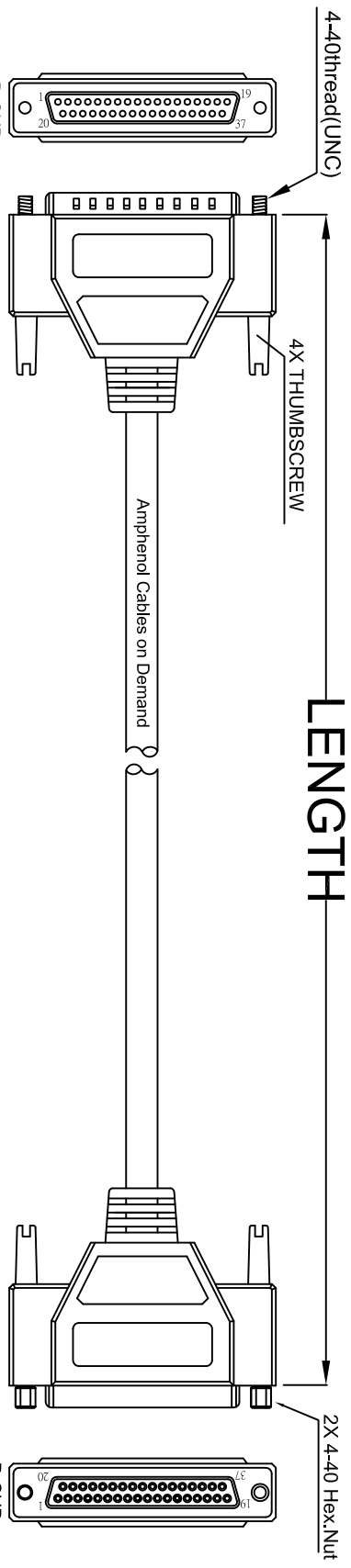


THE INFORMATION CONTAINED IN THIS DRAWING IS THE SOLE PROPERTY OF AMPHENOL CABLES ON DEMAND. ANY REPRODUCTION OR DISCLOSURE TO THIRD PARTIES IN PART OR WHOLE, WITHOUT THE EXPRESS WRITTEN PERMISSION OF AMPHENOL CABLES ON DEMAND IS PROHIBITED.

REV.	DESCRIPTION	DATE	APPROVED
A	NEW RELEASE	18/JAN/2007	
A1	Add wiring color	16/JAN/2012	

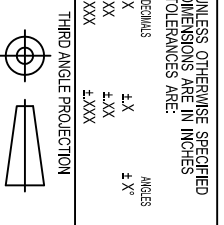


SECC A-A

LENGTH	P/N	Cable Color
2.5FT ±1 inch	CS-DSDMDB37MF-002.5	GREY
5FT ±2 inch	CS-DSDMDB37MF-005	GREY
10FT ±3 inch	CS-DSDMDB37MF-010	GREY
15FT ±3 inch	CS-DSDMDB37MF-015	GREY
25FT ±4 inch	CS-DSDMDB37MF-025	GREY
50FT ±8 inch	CS-DSDMDB37MF-050	GREY

Male	Female	Color	Male	Female	Color
PIN1	PIN1	Black	PIN20	PIN20	Red/Black
PIN2	PIN2	Brown	PIN21	PIN21	Orange/Black
PIN3	PIN3	Red	PIN22	PIN22	Yellow/Black
PIN4	PIN4	Orange	PIN23	PIN23	Green/Black
PIN5	PIN5	Yellow	PIN24	PIN24	Gray/Black
PIN6	PIN6	Green	PIN25	PIN25	Gray/Black
PIN7	PIN7	Blue	PIN26	PIN26	Pink/Red
PIN8	PIN8	Purple	PIN27	PIN27	Pink/Blue
PIN9	PIN9	Gray	PIN28	PIN28	Pink/Red
PIN10	PIN10	White	PIN29	PIN29	Light Blue
PIN11	PIN11	Pink	PIN30	PIN30	Light Blue/Red
PIN12	PIN12	Light Green	PIN31	PIN31	Light Blue/Black
PIN13	PIN13	Black/White	PIN32	PIN32	Light Blue/Blue
PIN14	PIN14	Brown/White	PIN33	PIN33	Light Blue/Red
PIN15	PIN15	Red/White	PIN34	PIN34	Grey/Red
PIN16	PIN16	Orange/White	PIN35	PIN35	Grey/Green
PIN17	PIN17	Green/White	PIN36	PIN36	Purple/Black
PIN18	PIN18	Blue/White	PIN37	PIN37	Blue/Black
PIN19	PIN19	Purple/White	SHIELD	SHIELD	Drain Wire

NOTES: UNLESS OTHERWISE SPECIFIED



UNLESS OTHERWISE SPECIFIED DIMENSIONS ARE IN INCHES TOLERANCES ARE:

DECIMALS	ANGLES
.X	±X
.XX	±XX
.XXX	±XXX

EARN. NO.		DATE		SIZE	DWG. NO.	SCALE	SHEET	OF	REV.
APPROVALS	DATE	APPROVALS	DATE						
DRAWN	16/JAN/2012	LF	16/JAN/2012	A	CS-DSDMDB37MF-XXXX				A1
CHECKED		BA	16/JAN/2012						
RESP ENG									
MFG ENG									

Amphenol Cables on Demand  
20 VALLEY ST. ENDDICOTT, NY 13780

ASM CBL Deluxe 37PIN D-Sub MF

## X-ON Electronics

Largest Supplier of Electrical and Electronic Components

*Click to view similar products for [D-Sub Cables](#) category:*

*Click to view products by [Amphenol](#) manufacturer:*

Other Similar products are found below :

[1200980218](#) [1200980067](#) [RB09P09P-006](#) [RB09P09P-012](#) [RB15P15P-006](#) [RB25P25P-006](#) [RB25P25P-012](#) [RB37P37P-024](#) [172-0906](#)  
[SHD15P15S-012](#) [SHD15P15S-036](#) [SHD15P15S-060](#) [ACL-10137-2MM](#) [RB09P09P-024](#) [319285-3](#) [RS422-OM2](#) [SHD26P26S-060](#)  
[SHD44P44S-036](#) [73-6210MM-6](#) [C200H-CN320-EU](#) [49725A 060S2](#) [73231-1321](#) [SDB-50AFFM-SL7A02](#) [49760A 060S2](#) [CS-](#)  
[DSDMDB09MM-050](#) [HDB-26AFFM-SL7A02](#) [30-9503P](#) [30-9522P](#) [73-6220MM-6](#) [1200980058](#) [1200980066](#) [1200980078](#) [1200980052](#)  
[1200980093](#) [1200980028](#) [1200980021](#) [1200980127](#) [SDB-09AFFM-SL7A02](#) [SDB-15AMMM-SL7A01](#) [BB-LDVYCBL](#) [83421-9286](#)  
[MLDM2L-21P-6K7-18B](#) [KSFD1](#) [MM-2J2-021-SS1-41WN](#) [HDB-78AMMM-SL7A05](#) [SDB-37AMMM-SL7A03](#) [SDB-15AFFM-SL7A05](#)  
[ACC-500-163-R](#) [172-1910](#) [2900907/21.4](#)