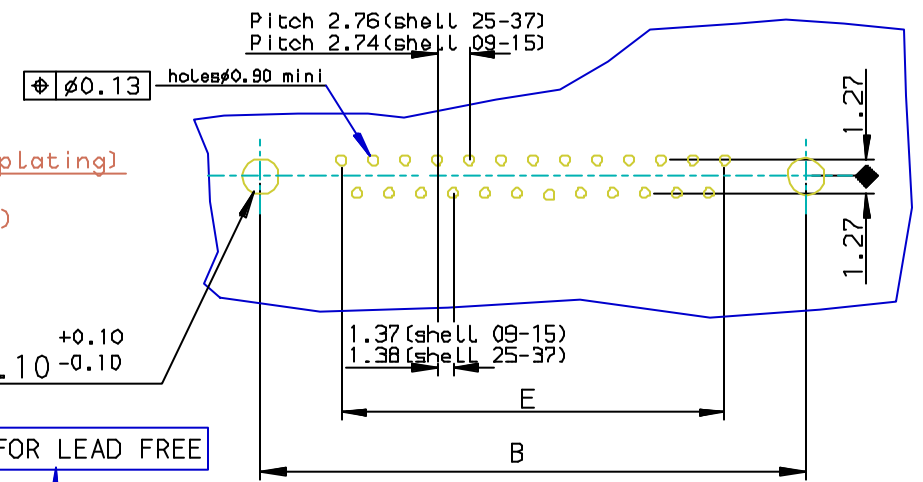


PC card drilling dimensions (after plating)  
(thickness 2.40 ± 0.20mm)



LF FOR LEAD FREE

**REQUIREMENTS**

Technical characteristics:

Shell: steel tin/Zinc Cr3 plated  
 Insulators: self-extinguishing thermoplastic ,ULclass94V0  
 Contacts size 20: brass, gold on mating end, bright tin on termination end over nickel on entire contact  
 Cycles :500 mini for plating 6  
 :200 mini for plating 4

Screwlock: brass, tin/Zinc Cr3 plated

Metal plate for electrical continuity: brass, tin/Zinc Cr3 plated

Electrical characteristics:

max.current rating: 5A  
 Test voltage: 1000V  
 Rated voltage: 300V  
 Contact resistance: <15mΩ  
 Shell resistance: <5mΩ  
 Insulation resistance: >5000MΩ

Climatic characteristics:

Operating temperature range: -55°C +125°C

Dimensions:

in accordance with MIL-C-24308

| SHELL | A±0.38 | B±0.12 | C±0.10 | D±0.25 | G±0.25 | PART NUMBER    |
|-------|--------|--------|--------|--------|--------|----------------|
| 09    | 30.81  | 24.99  | 16.96  | 16.79  | 5.90   | D09P13B*UX00** |
| 15    | 39.14  | 33.32  | 25.18  | 25.12  | 5.90   | D15P13B*UX00** |
| 25    | 53.03  | 47.04  | 39.12  | 38.84  | 5.70   | D25P13B*UX00** |
| 37    | 69.32  | 63.50  | 55.68  | 55.30  | 5.70   | D37P13B*UX00** |

Plating: 4 --> Flash AU  
 Plating: 6 --> 0.76µ AU

FOR ROHS DETAILS REFER DWG.NO: C01-8646-0000  
 European Views



Copyright FCI.

| rev | ecn no   | dr | date       |
|-----|----------|----|------------|
| D   | 105-0124 | JS | 2005/07/27 |
| E   | 106-0074 | SK | 2006/06/08 |
| -   | -        | -  | -          |
| -   | -        | -  | -          |
| -   | -        | -  | -          |
| -   | -        | -  | -          |

|                                       |             |   |                                   |                  |
|---------------------------------------|-------------|---|-----------------------------------|------------------|
| www.fciconnect.com                    |             | surface<br>ISO 1302 ✓   | tolerance std<br>ISO 406 ISO 1101 | projection<br>mm |
| TOLERANCES UNLESS OTHERWISE SPECIFIED |             |   |                                   |                  |
| Dr                                    | JOHN SLEEBA | 1994/06/30  | ANGULAR                           | 0.X ± 0.1        |
| Eng                                   | GEORGE VJ   | 1994/06/30  | LINEAR                            | 0.XX ± 0.1       |
| Chr                                   | GEORGE VJ   | 2005/07/27  | 0.XX' ± 2'                        | 0.XXX ± 0.1      |
| Appr                                  | KVSD        | 2005/07/27  | Product family                    | D-SUB            |
| FCI                                   |             | title<br>WITH SCREWLOCK & METAL PLATE.<br>WITH SCREWLOCK & METAL PLATE. |                                   | size<br>A3       |
| catalog no<br>DELTA-D                 |             | spec no<br>C01-8646-0261  |                                   | Scale<br>1:1     |
|                                       |             | CUSTOMER  |                                   | Rev.<br>E        |
|                                       |             | sheet 1 of 1  |                                   |                  |

REV F - 2006-04-17

## X-ON Electronics

Largest Supplier of Electrical and Electronic Components

*Click to view similar products for [D-Sub Standard Connectors](#) category:*

*Click to view products by [Amphenol](#) manufacturer:*

Other Similar products are found below :

[56F706-005-LI](#) [56F711-015](#) [LV242999-142T12](#) [015-0341-000](#) [015-0372-005](#) [015-0372-008](#) [015-8755-001](#) [020419-0104](#) [012-0467-000](#)  
[012-9507-034](#) [012-9507-114](#) [020745-0008](#) [609-25P](#) [CT2-18-11PCAU](#) [CT6-10SL-3SC](#) [CT6-10SL-4SC](#) [CT6-14S-2SC](#) [CT6E14SA7SC](#)  
[CT6N10SL-4SSA34](#) [M83513/01-FC](#) [M83723/76W24619 L/C](#) [M85049/48-3-2F](#) [6STD09PCM99B70X](#) [6STD09SCM99B30X](#)  
[6STD09SCT99S40X](#) [6STD15PCT99S40X](#) [6STD15SCT99S40X](#) [6STF09PCM05B70X](#) [7-135760-9](#) [MC11E-10-6SN](#) [747552-3](#) [MD1-21PS](#)  
[MDM-15SCBRM7-F222](#) [MDM96517-699](#) [MDM96521-744](#) [MDVB1-21SL1](#) [MIK0-1-7SH003](#) [MIKQ6-7SH076](#) [MIKQ7-7PH077](#) [MIKQ7-](#)  
[7PH11](#) [MIKQ7-7PH32](#) [MJSV-28SL61](#) [MKJ4A1F14-55S](#) [8-135760-3](#) [8STD09PCM99B30X](#) [PG-KV/PV-16-GROM-SEALING](#) [GDA15P](#)  
[GDAY15PB](#) [980-0000-170](#) [980-0000-171](#)