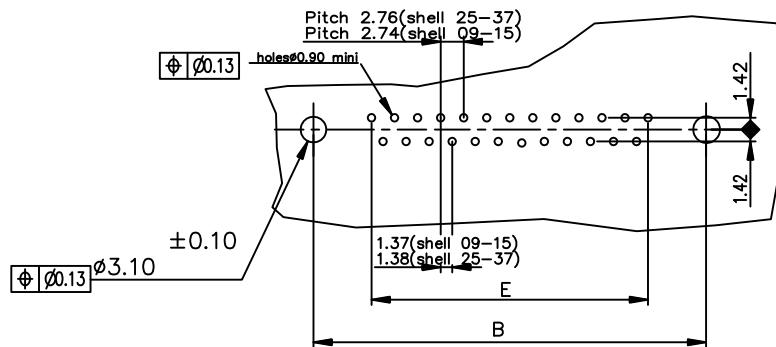


PC card drilling dimensions(after plating)
(thickness 2.40±0.20mm)



Notes:

1) The nut can protrude above the surface of insulator but maintaining the footprint dimension 6±0.15 mm.

GENERAL CHARACTERISTICS AND ROHS INFORMATIONS:
SEE DRAWING C01-8646-0000

LEAD FREE PART NUMBER

SHELL	A±0.38	B±0.12	C±0.10	D±0.25	E±0.07	PART NUMBER		
09	30.81	24.99	16.96	16.79	10.96	D09P24B4P*00LF	D09P24B5P*00LF	D09P24B6P*00LF
15	39.14	33.32	25.18	25.12	19.18	D15P24B4P*00LF	D15P24B5P*00LF	D15P24B6P*00LF
25	53.03	47.04	39.12	38.84	33.12	D25P24B4P*00LF	D25P24B5P*00LF	D25P24B6P*00LF
37	69.32	63.50	55.68	55.30	49.68	D37P24B4P*00LF	D37P24B5P*00LF	D37P24B6P*00LF
						Gold flash	0.40 µ gold	0.76 µ gold

Threaded ØT M3 = L
Threaded ØT 4.40 = X

mat'l. code		surface		tolerance		projection		product family	
-		ISO 1302 ✓		ISO 406 ISO 1101		⊕		D-SUB	
ltr		ecn no	dr	date		angles		title	
G		ELX-1-21256	AB	2015/07/14		linear		MALE CONNECTOR DELTA-D	
						0°±2'		STRAIGHT - SOLDER TYPE FOR PCB 2.4mm	
						.0±0.1		scale 2:1	
						.00±0.1			
						.000±0.1			
				dr		LELEON		1992/09/14	
				engr		ALIAS BABU		2015/07/14	
				chr		MITHUN PAUL		2015/07/14	
				app		BIJU K PAUL		2015/07/14	
sheet index		revision		G					
		sheet		1					
								FCJ	
								dwg no	
								sheet 1 of 1	
								size	
								A3	
								type	
								Product Customer Drawing	

X-ON Electronics

Largest Supplier of Electrical and Electronic Components

Click to view similar products for [D-Sub Standard Connectors](#) category:

Click to view products by [Amphenol](#) manufacturer:

Other Similar products are found below :

[56F706-005-LI](#) [56F711-015](#) [LV242999-142T12](#) [015-0341-000](#) [015-0372-005](#) [015-0372-008](#) [015-8755-001](#) [020419-0104](#) [012-0467-000](#)
[012-9507-034](#) [012-9507-114](#) [020745-0008](#) [609-25P](#) [CT2-18-11PCAU](#) [CT6-10SL-3SC](#) [CT6-10SL-4SC](#) [CT6-14S-2SC](#) [CT6E14SA7SC](#)
[CT6N10SL-4SSA34](#) [M83513/01-FC](#) [M83723/76W24619 L/C](#) [M85049/48-3-2F](#) [6STD09PCM99B70X](#) [6STD09SCM99B30X](#)
[6STD09SCT99S40X](#) [6STD15PCT99S40X](#) [6STD15SCT99S40X](#) [6STF09PCM05B70X](#) [7-135760-9](#) [MC11E-10-6SN](#) [747552-3](#) [MD1-21PS](#)
[MDM-15SCBRM7-F222](#) [MDM96517-699](#) [MDM96521-744](#) [MDVB1-21SL1](#) [MIK0-1-7SH003](#) [MIKQ6-7SH076](#) [MIKQ7-7PH077](#) [MIKQ7-](#)
[7PH11](#) [MIKQ7-7PH32](#) [MJSV-28SL61](#) [MKJ4A1F14-55S](#) [8-135760-3](#) [8STD09PCM99B30X](#) [PG-KV/PV-16-GROM-SEALING](#) [GDA15P](#)
[GDAY15PB](#) [980-0000-170](#) [980-0000-171](#)