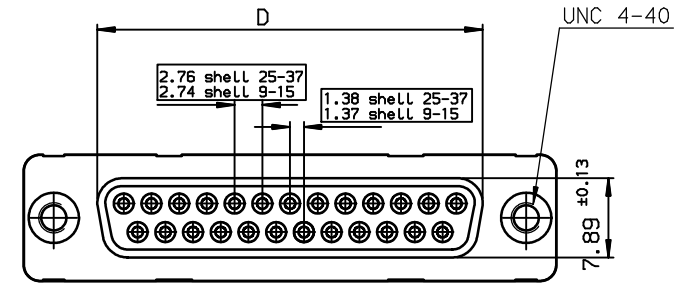
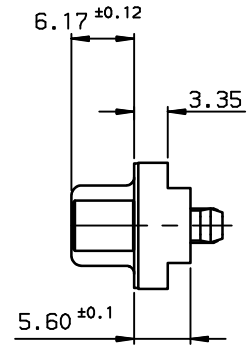
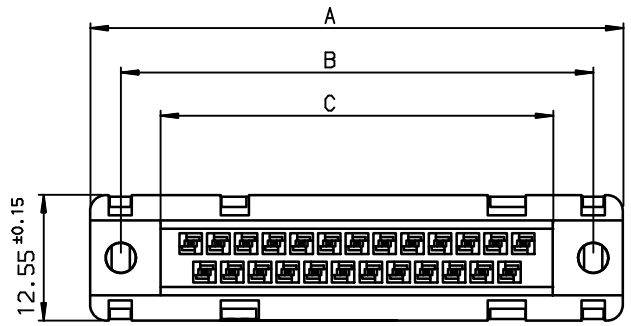


Copyright FCI.
FCI



TIN LEAD PART NUMBER

SHELL	A±0.38	B±0.12	C±0.10	D±0.25	E±0.07	PART NUMBER
09	30.81	24.99	16.96	16.21	10.96	D09S14A*GV00
15	39.14	33.32	25.18	24.54	19.18	D15S14A*GV00
25	53.03	47.04	39.12	38.25	33.12	D25S14A*GV00
37	69.32	63.50	55.68	54.71	49.68	D37S14A*GV00

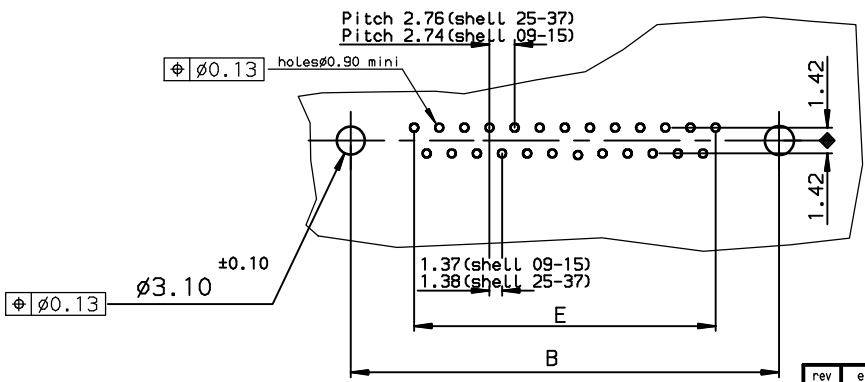
Protection: 4 --> flash AU
6 --> 0.76µ AU

LEAD FREE PART NUMBER

SHELL	A±0.38	B±0.12	C±0.10	D±0.25	E±0.07	PART NUMBER
09	30.81	24.99	16.96	16.21	10.96	D09S14A*GV00LF
15	39.14	33.32	25.18	24.54	19.18	D15S14A*GV00LF
25	53.03	47.04	39.12	38.25	33.12	D25S14A*GV00LF
37	69.32	63.50	55.68	54.71	49.68	D37S14A*GV00LF

Protection: 4 --> flash AU
6 --> 0.76µ AU

PC card drilling dimensions(after plating)
(thickness 1.60±0.20mm)



GENERAL CHARACTERISTICS AND ROHS INFORMATIONS:
SEE DRAWING C01-8646-0000

European Views

www.fciconnect.com		surface ISO 1302 ✓	tolerance std ISO 406 ISO 1101	projection mm
TOLERANCES UNLESS OTHERWISE SPECIFIED				
Dr	PESSON	1992/01/08	ANGULAR	LINEAR
Eng	PESSON	1992/01/08	0.x	±0.1
Chr	LEGARE	1992/01/08	0.xx	±0.1
Appr	LEGARE	1992/01/08	0.xxx	±0.1
Product family			D-SUB	Spec ref -
title FEMALE CONNECTOR, LOW PROF straight solder type for				Rev. F
catalog no				C01-8646-0051
CUSTOMER				sheet 1 of 1

rev	ecn no	dr	date
C	-	-	1996/09/04
D	LS05-001	MPE	2005/03/09
E	LS05-0056	MPE	2005/06/27
F	LS06-0097	LGO	2006/07/29
-	-	-	-
-	-	-	-
-	-	-	-

X-ON Electronics

Largest Supplier of Electrical and Electronic Components

Click to view similar products for [D-Sub Standard Connectors](#) category:

Click to view products by [Amphenol](#) manufacturer:

Other Similar products are found below :

[56F706-005-LI](#) [56F711-015](#) [012-9507-004](#) [LV242999-142T12](#) [015-0341-000](#) [015-0372-005](#) [015-0372-008](#) [015-8755-001](#) [020419-0104](#)
[012-0467-000](#) [012-9507-034](#) [012-9507-114](#) [020745-0008](#) [609-25P](#) [CT2-18-11PCAU](#) [CT6-10SL-3SC](#) [CT6-10SL-4SC](#) [CT6-14S-2SC](#)
[CT6E14SA7SC](#) [CT6N10SL-4SSA34](#) [M83513/01-FC](#) [M83723/76W24619 L/C](#) [M85049/48-3-2F](#) [6STD09PCM99B70X](#) [6STD09SCM99B30X](#)
[6STD09SCT99S40X](#) [6STD15PCT99S40X](#) [6STD15SCT99S40X](#) [6STF09PCM05B70X](#) [7-135760-9](#) [MC11E-10-6SN](#) [747552-3](#) [MD1-21PS](#)
[MDM-15SCBRM7-F222](#) [MDM96517-699](#) [MDM96521-744](#) [MDVB1-21SL1](#) [MIK0-1-7SH003](#) [MIKQ6-7SH076](#) [MIKQ7-7PH077](#) [MIKQ7-](#)
[7PH11](#) [MIKQ7-7PH32](#) [MJSV-28SL61](#) [MKJ4A1F14-55S](#) [8-135760-3](#) [8STD09PCM99B30X](#) [PG-KV/PV-16-GROM-SEALING](#) [GDA15P](#)
[GDAY15PB](#) [980-0000-170](#)