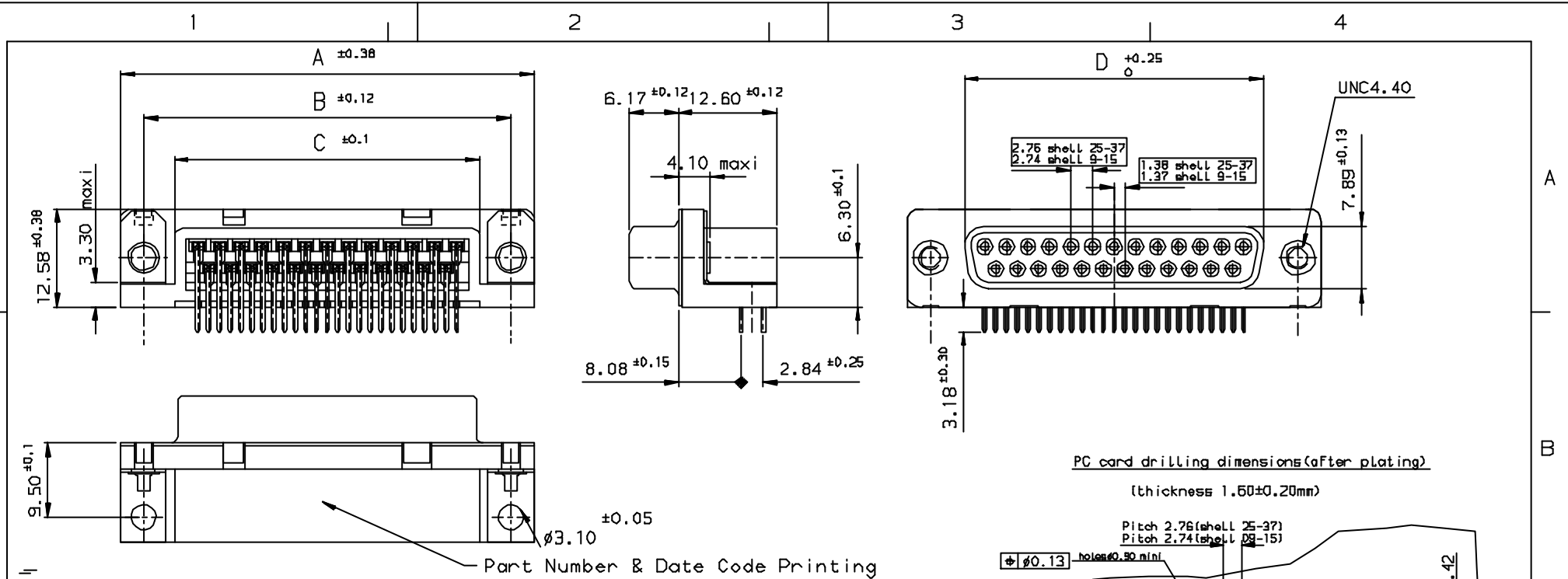


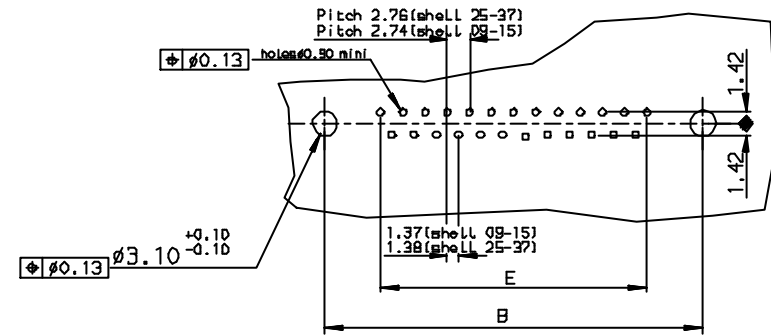
Tous droits strictement réservés. Reproduction ou communication a des tiers interdites sans autorisation écrite de la Direction des Conception. Propriété de FCI. Droits de reproduction FCI.

FCI

All rights strictly reserved. Reproduction or issues in third parties in any form without the written authorization from the preparation. Property of FCI. Copyright FCI.



PC card drilling dimensions (after plating)
(thickness 1.60±0.20mm)



		PART NUMBER							
SHELL	A±0.38	B±0.12	C±0.10	D±0.25	E±0.07	Plating:0.76µ AU	Plating:Flash AU		
09	30.81	24.99	16.95	16.21	10.96	D09S33E6UX00**	D09S33E4UXD0**		
15	39.14	33.32	25.18	24.54	19.18	D15S33E6UX00**	D15S33E4UXD0**		
25	53.03	47.04	39.12	38.25	33.12	D25S33E6UX00**	D25S33E4UXD0**		
37	69.32	63.50	55.68	54.71	49.68	D37S33E6UX00**	D37S33E4UXD0**		

LF FOR LEAD FREE

REQUIREMENTS

Technical characteristics:

Shell: steel tin plated
 Insulators: self-extinguishing black polyster, ULClass94V0
 Contacts size 20: phosphor bronze, gold 0.76µ on mating end, bright tin on termination end over nickel on entire contact
 Cycles > 500 .

Metal plate for electrical continuity: brass, tin plated
 Nuts: brass, tin plated

Electrical characteristics:

max. current rating: 5A
 Test voltage: 1000V
 Rated voltage: 300V
 Contact resistance: ≤15mΩ
 Shell resistance: ≤5mΩ
 Insulation resistance: >5000MΩ

Climatic characteristics:

Operating temperature range: -55°C +125°C

Dimensions:

in accordance with MIL-C-24308

FOR R0HS DETAILS REFER DWG.N0:C01-8646-0000

Utr	Eon no	Dr	date
I	005-0124	JS	27/7/05

		✓		Tolerance LINEAR ±0.1 ANGULAR ±1°	Projection 	MM ↔
Dr JOHN SLEEBA	7/1/03	Product Family	D-SUB	Size	A3	Scale
Eng GEORGE VJ	7/1/03	Spec ref		ECN		
Chr GEORGE VJ	27/7/05	Material				
Appr K Somasundaram	27/7/05					
FCI	Title SOCKET CONNECT.DELTA D right angle with nut & metal plate			Dwg no C01-8646-0148		Rev. c
Catalog no		DELTA-D		CUSTOMER COPY		Sheet 1 of 1

INDEX	DATE	REVISION DESCRIPTION
c	27/7/05	LEAD FREE DETAILS ADDED

X-ON Electronics

Largest Supplier of Electrical and Electronic Components

Click to view similar products for [D-Sub Standard Connectors](#) category:

Click to view products by [Amphenol](#) manufacturer:

Other Similar products are found below :

[56F706-005-LI](#) [56F711-015](#) [LV242999-142T12](#) [015-0341-000](#) [015-0372-005](#) [015-0372-008](#) [015-8755-001](#) [020419-0104](#) [012-0467-000](#)
[012-9507-034](#) [012-9507-114](#) [020745-0008](#) [609-25P](#) [CT2-18-11PCAU](#) [CT6-10SL-3SC](#) [CT6-10SL-4SC](#) [CT6-14S-2SC](#) [CT6E14SA7SC](#)
[CT6N10SL-4SSA34](#) [M83513/01-FC](#) [M83723/76W24619 L/C](#) [M85049/48-3-2F](#) [6STD09PCM99B70X](#) [6STD09SCM99B30X](#)
[6STD09SCT99S40X](#) [6STD15PCT99S40X](#) [6STD15SCT99S40X](#) [6STF09PCM05B70X](#) [7-135760-9](#) [MC11E-10-6SN](#) [747552-3](#) [MD1-21PS](#)
[MDM-15SCBRM7-F222](#) [MDM96517-699](#) [MDM96521-744](#) [MDVB1-21SL1](#) [MIK0-1-7SH003](#) [MIKQ6-7SH076](#) [MIKQ7-7PH077](#) [MIKQ7-](#)
[7PH11](#) [MIKQ7-7PH32](#) [MJSV-28SL61](#) [MKJ4A1F14-55S](#) [8-135760-3](#) [8STD09PCM99B30X](#) [PG-KV/PV-16-GROM-SEALING](#) [GDA15P](#)
[GDAY15PB](#) [980-0000-170](#) [980-0000-171](#)