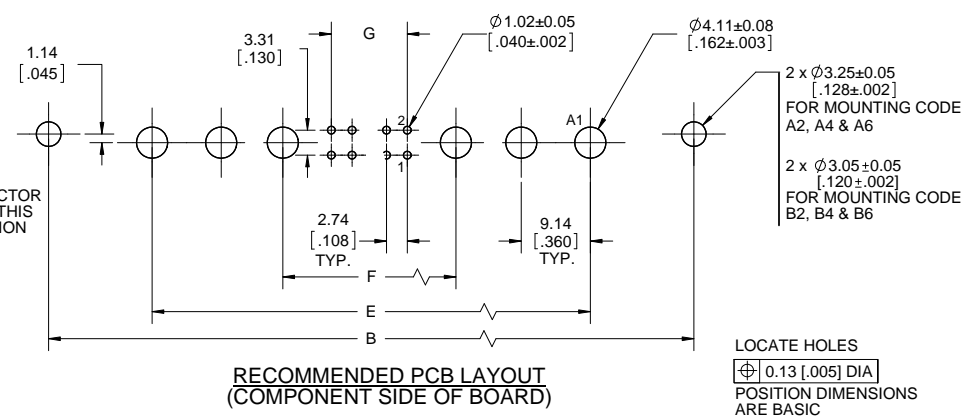
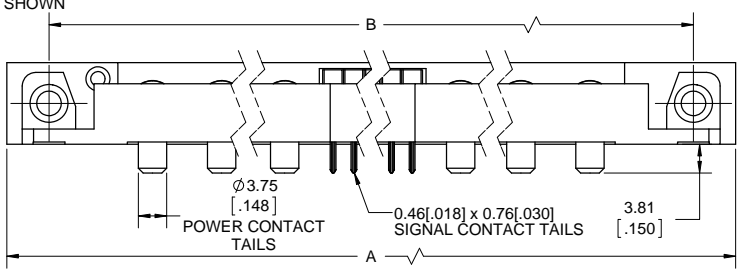
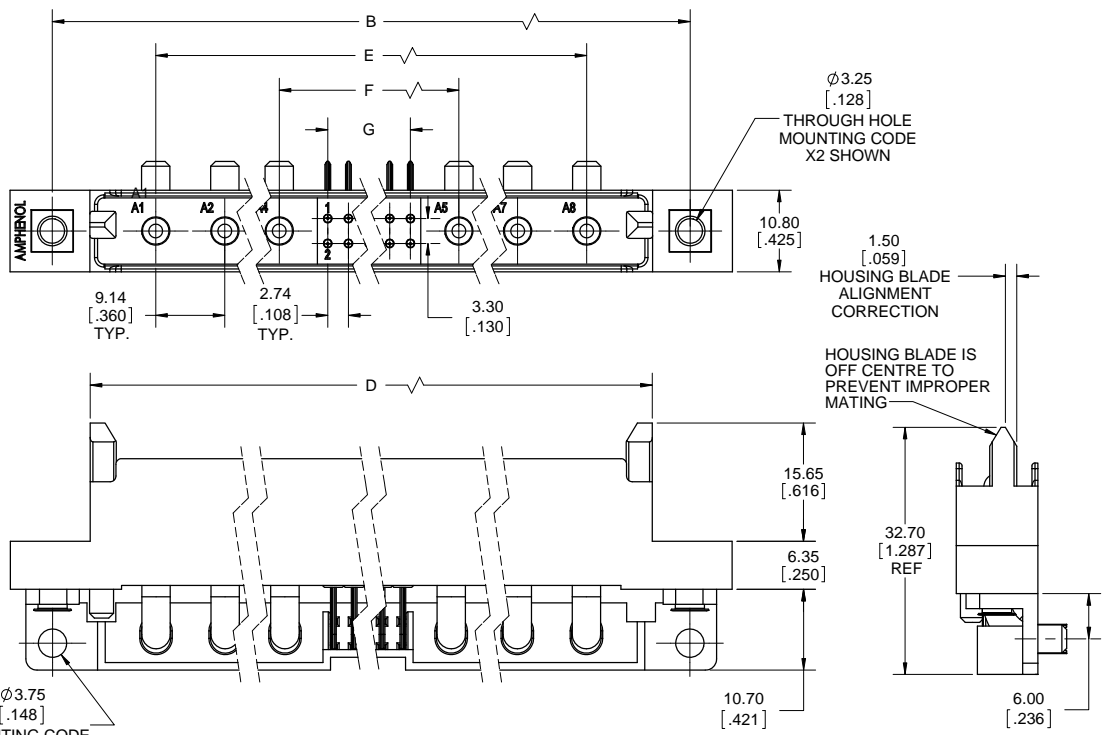


REVISIONS			
REV	DESCRIPTION, ECN, EAR NO.	DATE	APPD
A	FAMILY DRAWING (EAR 13889)	AUG17/11	S.M
B	UPDATE	OCT20/11	S.M
C	PART NUMBER UPDATE	MAR15/11	S.M



PART NUMBER:

DWR - T X XX P - R X 3 X - X X

- SERIES**
DWR
- PRODUCT TYPE**
T = SLIMDRAWER FINISHED CONNECTOR
- NUMBER OF POWER CONTACT POSITIONS**
2, 4, 6 OR 8
- NUMBER OF SIGNAL CONTACT POSITIONS**
00, 04, 06, 08, 10 ... 40
- GENDER**
P = PIN (MALE)
- ORIENTATION**
R = RIGHT ANGLE
- CONTACT OPTIONS**
2 = POWER PIN SIZE CB8 (Ø3.50mm)
3 = POWER PIN SIZE CB10 (Ø3.00mm)
STD SIGNAL
- CONTACT TERMINATION**
3 = PCB TAIL: POWER
3.75mm [.148"] DIA, 3.81mm [.150"] LONG
STD SIGNAL PCB TAIL
- PLATING OPTIONS**
2 = 0.38µm [15µ"] GOLD
3 = 0.76µm [30µ"] GOLD
6 = 5.08µm [200µ"] SILVER POWER,
0.38µm [15µ"] GOLD SIGNAL
- MOUNTING OPTION, RIGHT ANGLE PCB AXIS**
A = BRACKET WITH 3.75mm [.148"] DIA THROUGH HOLE
B = BRACKET WITH BOARDLOCK
- MOUNTING OPTION, MATING AXIS**
2 = 3.25mm [.128"] DIA THROUGH HOLE
4 = #4-40 THREADED HOLE
6 = M3 THREADED HOLE



SPECIAL CONFIGURATIONS
SPECIAL CODE DESIGNATIONS ARE RESERVED FOR SPECIAL CONFIGURATIONS. CONTACT AUTHORIZED AMPHENOL REPRESENTATIVE FOR DETAILS.

NOTES:

- MATERIALS: ALL MATERIALS ARE RoHS COMPLIANT PER EU DIRECTIVE 2002/95/EC AND AMENDMENTS
- HOUSING: HIGH TEMPERATURE RESISTANT NYLON, UL FLAMMABILITY RATING 94V-0, COLOUR BLACK
- SIGNAL CONTACTS: PHOSPHOR BRONZE PLATED WITH GOLD OVER 1.27µm (50µ") NICKEL ON THE MATING AREA AND 2.54µm (100µ") MATTE TIN OVER NICKEL ON THE TAILS
- POWER CONTACTS: COPPER ALLOY PLATED WITH GOLD OR SILVER OVER 1.27µm (50µ") MIN NICKEL
- WHEN MATED WITH SOCKET CONNECTOR DWR-TXXXS-VXXX-XX, THE ORDER OF MECHANICAL AND ELECTRICAL ENGAGEMENT IS A) HOUSING BLADES, B) HOUSING SHROUD, C) POWER CONTACTS AND D) SIGNAL CONTACTS.
- ELECTRICAL CHARACTERISTICS
- CURRENT RATING: UP TO 55A POWER, 5A SIGNAL
- DIELECTRIC WITHSTANDING VOLTAGE: 2500V DC
- INSULATION RESISTANCE: 5000 MEGAOHMS
- OPERATING TEMPERATURE: -55C TO +105C

UNLESS SPECIFIED OTHERWISE	DRAWN	S.CAELERS	AUG17/11
PRIMARY UNITS MILLIMETERS	CHECKED	S.MUGAN	AUG17/11
SECONDARY INCHES	M.E. APPD		
REFERENCE IN PARENTHESSES	Q.A. APPD		
GENERAL TOLERANCES	DWG APPR.		
1 DECIMAL PLACE	ENG. REL. NO.		
2 DECIMAL PLACES	REF.		
3 DECIMAL PLACES	THIRD ANGLE PROJECTION		
ANGULAR DEGREES	DO NOT SCALE DRAWING		

Amphenol Canada Corp.

DWR SERIES SLIM DRAWER PIN CONNECTOR, PIN & SIGNAL CONTACTS, RIGHT ANGLE PCB TAILS (Ø3.75mm [.148"] x 3.81mm [.150"] LONG), RoHS COMPLIANT

DWG. NO. **P-DWR-TXXXP-RX3X-XX** REV **C**

CODE ID NO. 03554 | DWG SIZE: C | SCALE: 2:1 | SHEET 1 OF 2

X-ON Electronics

Largest Supplier of Electrical and Electronic Components

Click to view similar products for [Power to the Board](#) category:

Click to view products by [Amphenol](#) manufacturer:

Other Similar products are found below :

[6450171-4](#) [6450552-7](#) [6600323-8](#) [6643429-1](#) [6646040-2](#) [6651939-1](#) [6766604-1](#) [120959-1](#) [1393557-2](#) [1393532-2](#) [1393532-3](#) [1393532-4](#)
[1393557-1](#) [1600812-5](#) [1-6450861-2](#) [1744132-7](#) [1761122-1](#) [1766250-1](#) [1892109-1](#) [2-6450860-5](#) [2-6450870-0](#) [1-6450161-4](#) [1-6450850-6](#) [1-](#)
[6450869-6](#) [1645526-2](#) [1-6600130-0](#) [2005243-2](#) [TE34-12-16P-F0](#) [5-6450830-6](#) [5646956-4](#) [4-6450830-9](#) [4-6600333-3](#) [10125416-4050LF](#)
[6600320-3](#) [3-6450860-5](#) [1888123-2](#) [6450166-1](#) [6643978-1](#) [6766605-1](#) [N11444](#) [6651938-1](#) [6450810-7](#) [46437-1112](#) [1-1589677-8](#) [5646956-5](#)
[6450813-2](#) [6450129-4](#) [1645523-1](#) [PSS-06-01-T-S](#) [0465621864](#)