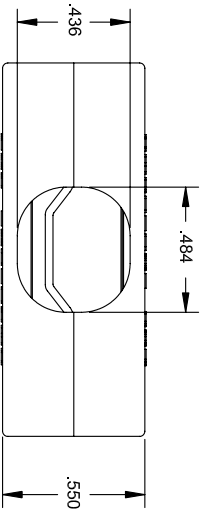
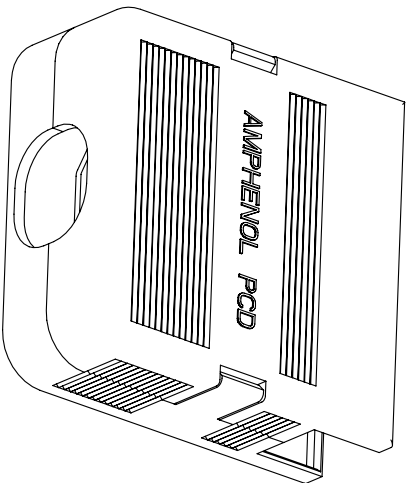
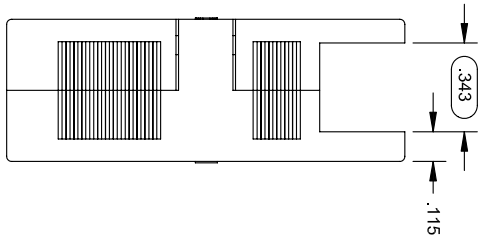
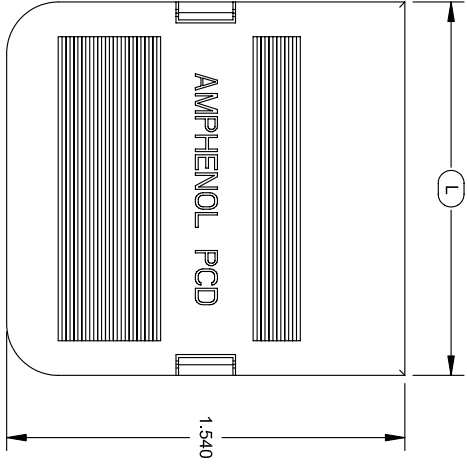
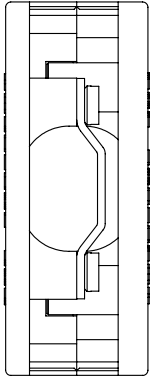


REV	ECN	APPD
1		



NOTES:
 MATERIALS: HOUSING: PA UL 94 V-0 CLAMP.
 100% TIN-PLATED STEEL (1020 SERIES)
 SCREW: PHOS BRONZE, NICKEL PLATED.

P/N.	POS	DIM L (±0.004/IN)
ELXS041X0	4	0.616
ELXS051X0	5	0.754
ELXS061X0	6	0.892
ELXS071X0	7	1.030
ELXS081X0	8	1.168
ELXS091X0	9	1.306
ELXS101X0	10	1.444
ELXS111X0	11	1.582
ELXS121X0	12	1.720
ELXS131X0	13	1.858
ELXS141X0	14	1.996
ELXS151X0	15	2.134
ELXS161X0	16	2.272
ELXS171X0	17	2.410
X	COLOR	ELXS181X0 18 2.548
0	BLACK	ELXS191X0 19 2.686
G	GREEN	ELXS201X0 20 2.824

Amphenol Pcd

ENGR Ricky Zhang
 CHKD Mar-02-10

TITLE
ASSEMBLY
 CONNECTOR COVER .138CL
 WIRE PROTECTION/STRAIN RELIEF

DIMENSIONS
 ANSI Y14.5M
 UNITS: INCHES
 P/WE FILE

TOLERANCES
 XX ±0.01
 .XXX ±0.005
 ANGLES ±0.5°



PROJECTION
 THIS DOCUMENT CONTAINS
 PROPRIETARY INFORMATION WHICH
 IS THE CONFIDENTIAL PROPERTY
 OF AMPHENOL PCD INC., BEVERLY, MA

ORIGINAL
 NOT FOR
 CUSTOMER
 DISTRIBUTION

SIZE B DWG NO. ELXS04100_C REV 1
 CODE: 58982 SCALE: 2:1 SHEET 1 OF 1

X-ON Electronics

Largest Supplier of Electrical and Electronic Components

Click to view similar products for [Terminal Block Tools & Accessories](#) category:

Click to view products by [Amphenol](#) manufacturer:

Other Similar products are found below :

[00171430102](#) [00171420102](#) [600HL](#) [600RJ-07](#) [600RJ-11](#) [600RJ-14](#) [600RJS-10](#) [600RJS-12](#) [600RJS-21](#) [601RJ-09](#) [602SP](#) [602Z](#) [604J](#)
[CSTSPC1-2](#) [7B941-7](#) [88943-2100](#) [QC102](#) [1437403-6](#) [1437403-9](#) [1437403-8](#) [1453128-1](#) [147832-1](#) [EC0037-000](#) [MT2/H--](#) [MT6/H-N](#)
[MT6/V-GRND](#) [MT8/H-51-60](#) [BC2-12](#) [BCC-1-8/10](#) [EP2.5/4UN/BG](#) [1707755](#) [1735590](#) [1755480](#) [1789281](#) [1840227](#) [1840230](#) [2-1437402-1](#)
[JA2-03](#) [JB1-03/J](#) [JB2-04](#) [JB2-05](#) [JB2-07](#) [JB2-09/J](#) [PARALLELJUMPERLINK](#) [JS601](#) [2204082](#) [2302463](#) [2305949](#) [8TK2-24](#) [8WA1853](#)