

1

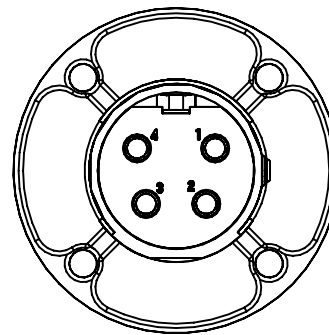
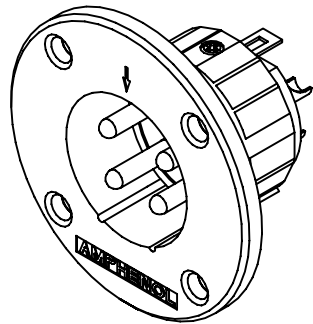
2

3

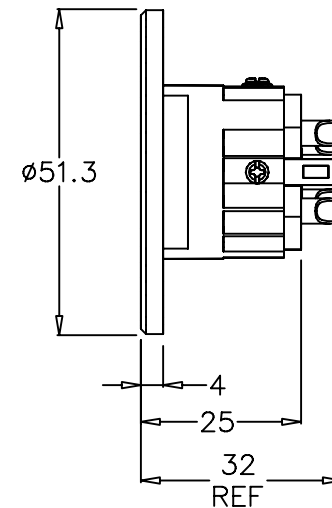
4

5

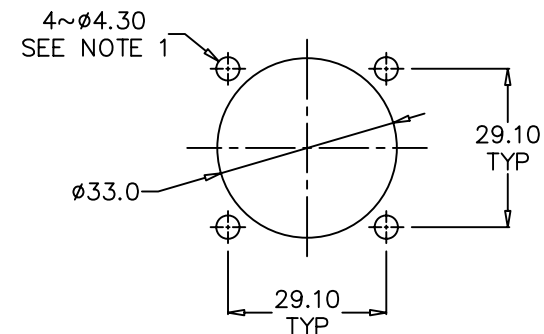
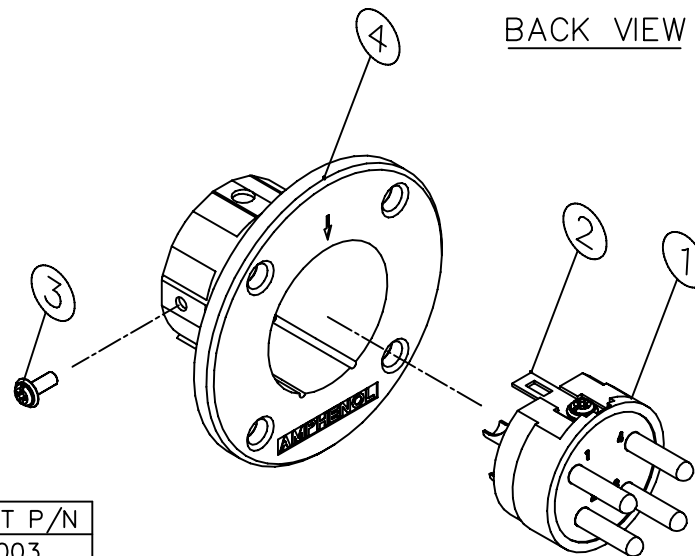
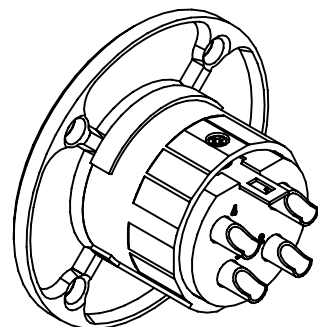
6



BACK VIEW



TOP VIEW



PANEL CUT OUT

EP-* - 14 TYPE	EP/AP INSERT P/N
EP - 3 - 14	156-4402-003
EP - 4 - 14	156-4402-004
EP - 5 - 14	156-4402-005
EP - 6 - 14	156-4402-006
EP - 8 - 14	156-4402-008

NOTE: 1. THE DIAMETER OF THE 4 MOUNTING HOLES ON THE PANEL CUT OUT DEPENDS ON THE SIZE OF THE SCREW TO BE USED  
2. FOR EXAMPLE: FOR AN EP-4-14 USE ASSY No. 128037-0004

2	OMIT PART NUMBER EP - 2 - 14 PRODUCT OBSOLETE	M.N.H.	19-11-08	8784
1	UPDATE TO AMPHENOL TITLE BLOCK & LOGO REDRAW, ADD BOM & PANEL CUT OUT	M.N.H.	12-04-01	7784
0	FIRST ISSUE	D.v.E.	15-04-94	----
REV.	CHANGE DETAILS	BY	DATE	CHG/No

ITEM	PART No.	DWG No.	DESCRIPTION	QTY	UNLESS OTHERWISE SPECIFIED TOLERANCE TO BE	THIS DOCUMENT IS THE PROPERTY OF AMPHENOL AUSTRALIA PTY. LTD. NO PART THEREOF MAY BE REPRODUCED AND USED WITHOUT THE PRIOR WRITTEN CONSENT OF THE OWNER	CAD FILE: 00806102	DRN: C.J.W.	DATE: 15-04-94	TITLE: EP-* - 14 CUSTOMER DRAWING	Amphenol	Amphenol Australia Pty Ltd, 2 Fireweys Blvd, Keysborough, Vic 3173	DRAWING NO. 126037-000*	SHEET 1 OF 1
4	248-4099-0**	248-4099-0**	EP-* - 14 SHELL	1	LINEAR: X ± 0.50 X.X ± 0.25 X.XX ± 0.10	ANGULAR: X' ± 1° X'X' ± 30' X'X'X' ± 15'								
3	990-4500-000	990-4500-000	2-32 PAN WASHER FACE SCREW	2	DO NOT SCALE									
2	357-4400-000	357-4400-000	EP RETAINER	1	BREAK ALL SHARP EDGES AND REMOVE ALL BURRS									
1	SEE TABLE	SEE TABLE	EP/AP PIN INSULATOR ASSEMBLY	1	FINISH: REFER TO COMPONENT									
DIMENSIONS IN MILLIMETRES					THIRD ANGLE PROJECTION					SCALE: 2:1 UOS				
					PART No: SEE TABLE					SIZE: A3				

1

2

3

4

5

6

## X-ON Electronics

Largest Supplier of Electrical and Electronic Components

*Click to view similar products for [Loudspeaker Connectors](#) category:*

*Click to view products by [Amphenol](#) manufacturer:*

Other Similar products are found below :

[HFRP-01](#) [LRX](#) [FE6935](#) [EP-3-14](#) [EP-4-12](#) [SC-M2-20](#) [CC-212](#) [CC-226](#) [FM1250](#) [FM1255](#) [FM1285](#) [NL4FRX](#) [NL4MMX](#) [NL4MPR](#)  
[NL4MP-ST](#) [NL8FC](#) [NLT4FP-BAG](#) [NLT8MP](#) [NLT8MP-BAG](#) [SP-4-MDV](#) [EP-8-11P](#) [EP-6-13P](#) [HPCC4FT](#) [NL4FX-5](#) [NL4MD-H](#) [NL4MD-](#)  
[V-2](#) [NL4MP-UC](#) [NLJ2MD-H](#) [NLT4MP](#) [SCNLT](#) [CP303010](#) [CP303010X](#) [HFRP-01B](#) [SP-2-FSG](#) [SP-2-FNSG](#) [AP-4-21](#) [AP-5-22](#) [AP-6-14](#)  
[AP-8-11](#) [AP-8-13](#) [SC-M2-04](#) [SC-NB10-1.0](#) [SC-NB20-1.0](#) [SC-NB30-1.0](#) [SC-NI10-0.6](#) [SC-NI10-1.8](#) [SC-NI4-0.75](#) [SC-NI6-0.6](#) [SC-NI6-2.7](#)  
[SC-SA15-0.6](#)