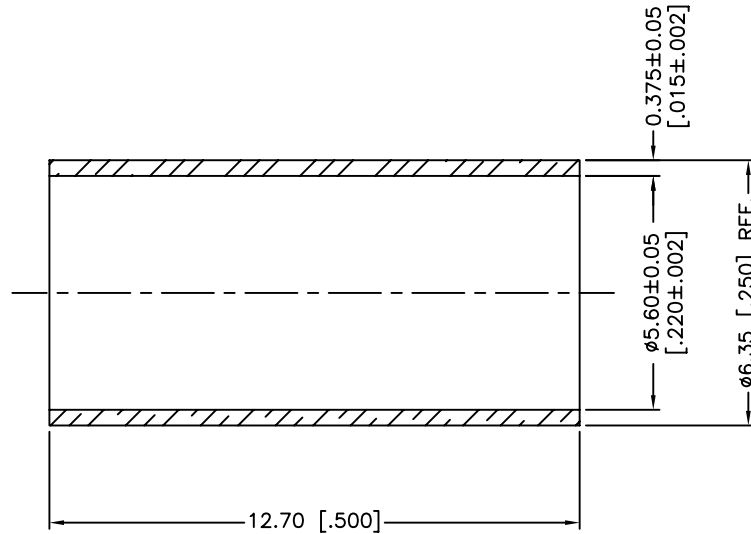


| REV. | DATE     | ECR NO. | DESCRIPTION           |
|------|----------|---------|-----------------------|
| NC   | 06/28/00 | XXXXXX  | INITIAL RELEASE       |
| A    | 01/20/14 | 2686    | UPDATE DRAWING FORMAT |



NOTE: ROCKWELL HARDNESS OF 65 MAX. ON 15-T SCALE  
(HEAT TREAT FOR 45 MIN. AT 1100°F BEFORE PLATING)

UNLESS OTHERWISE SPECIFIED DIMENSIONS ARE IN MILLIMETERS. DIMENSIONS IN [ ] ARE IN INCHES AND FOR CUSTOMER REFERENCE ONLY.  
UNLESS OTHERWISE SPECIFIED  
TOLERANCES FOR MILLIMETERS ARE:  
<0.5 ± 0.05mm  
0.5 - 6mm ± 0.10mm  
6 - 30mm ± 0.20mm  
30 - 120mm ± 0.30mm  
ANGLES ± 1°  
UNLESS OTHERWISE SPECIFIED  
TOLERANCES FOR INCHES ARE:  
<.020 ± 0.002"  
.020 - .236 ± 0.004"  
.236 - 1.180 ± 0.007"  
1.180 - 4.724 ± 0.012"  
ANGLES ± 1°  
DO NOT SCALE DRAWING

| APPROVALS |                            | DATE     |
|-----------|----------------------------|----------|
| DRAWN     | M.ZHANG                    | 01/20/14 |
| CHECKED   |                            |          |
| ISSUED    |                            |          |
| SHEET     | 1 OF 1                     |          |
| CAD FILE  | C:/CONNEX/FERRULE-223 .DWG |          |

# Amphenol Connex

|                              |      |      |       |
|------------------------------|------|------|-------|
| PART DESCRIPTION             |      |      |       |
| FERRULE (FOR RG-223/U CABLE) |      |      |       |
| PART NO.                     |      |      |       |
| FERRULE-223                  |      |      |       |
| DWG. NO.                     | REV. | SIZE | SCALE |
| FERRULE-223 .DWG             | A    | A    | NA    |

| 1           | FERRULE  | BRASS  | NICKEL | 1 |
|-------------|----------|--------|--------|---|
| DESCRIPTION | MATERIAL | FINISH | QTY    |   |

## X-ON Electronics

Largest Supplier of Electrical and Electronic Components

*Click to view similar products for [RF Connector Accessories](#) category:*

*Click to view products by [Amphenol](#) manufacturer:*

Other Similar products are found below :

[89674-0712](#) [F702RX24](#) [FERRULE-174](#) [R125802000](#) [R141802000](#) [R141805000](#) [R141842000](#) [R161844000](#) [R161862000](#) [R161862000W](#)  
[R280752000](#) [R280907000](#) [R694261906](#) [RFI21-13](#) [RFI375-12-D3](#) [RFI75-13-D2](#) [RFI75-3](#) [RFI75-4-D2](#) [RFI97-13](#) [AX102906](#) [AX102907](#)  
[18097-0013](#) [HP-375](#) [HP-500](#) [2098-0294-00](#) [2098-3251-94](#) [KA-81-05](#) [89674-0805](#) [RUBBER-CAP-BNC](#) [F1](#) [FERRULE-223](#) [202102-11](#)  
[213337-1](#) [220222-2](#) [24092671A](#) [24092678A](#) [R161841000](#) [R280468000](#) [R280510000](#) [R282862060](#) [RFI155-1](#) [RFI25-12-D3](#) [RFI25-5](#)  
[RFI25-5-D3](#) [RFI75-12-D2](#) [RFI75-2-D2](#) [RFI75-4-D3](#) [RFI77-6](#) [RFI97-14](#) [360HS001M2508M6](#)