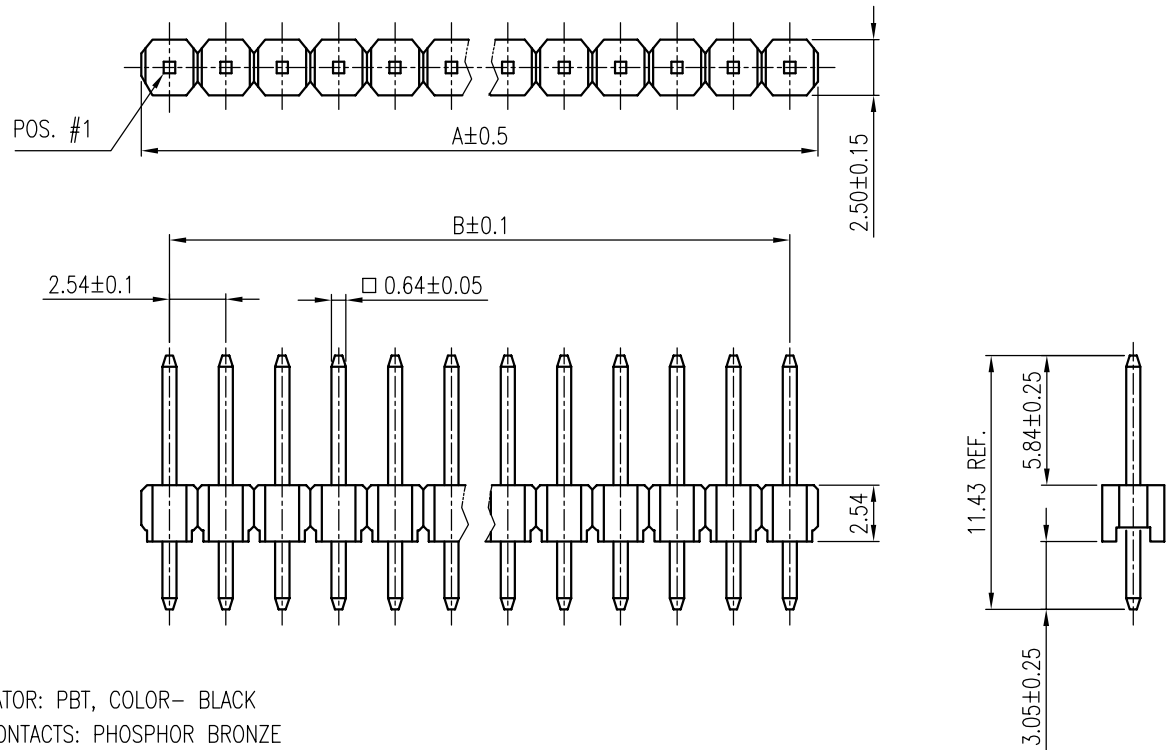


This document is the property of Amphenol Corporation and is delivered on the express condition that it is not to be disclosed, reproduced or used, in whole or in part, for manufacture or sale by anyone other than Amphenol Corporation without its prior consent, and that no right is granted to disclose or to use any information in this document.

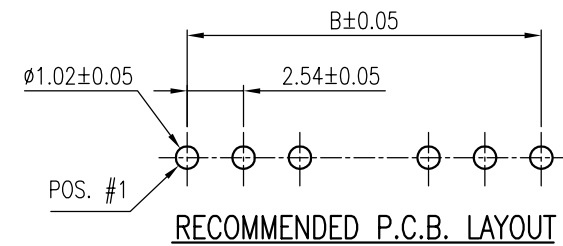
CUSTOMER DRAWING

REVISIONS				
SYM	ECN No.	DESCRIPTION	DATE	APPROVED
A		RELEASE FOR RoHS	08/22/2005	Henry Ko

G800 268 XXX EU	1 x 40 = 40	101.60	99.06
G800 269 XXX EU	1 x 39 = 39	99.06	96.52
G800 270 XXX EU	1 x 38 = 38	96.52	93.98
G800 271 XXX EU	1 x 37 = 37	93.98	91.44
G800 272 XXX EU	1 x 36 = 36	91.44	88.90
G800 273 XXX EU	1 x 35 = 35	88.90	86.36
G800 274 XXX EU	1 x 34 = 34	86.36	83.82
G800 275 XXX EU	1 x 33 = 33	83.82	81.28
G800 276 XXX EU	1 x 32 = 32	81.28	78.74
G800 277 XXX EU	1 x 31 = 31	78.74	76.20
G800 278 XXX EU	1 x 30 = 30	76.20	73.66
G800 279 XXX EU	1 x 29 = 29	73.66	71.12
G800 280 XXX EU	1 x 28 = 28	71.12	68.58
G800 281 XXX EU	1 x 27 = 27	68.58	66.04
G800 282 XXX EU	1 x 26 = 26	66.04	63.50
G800 283 XXX EU	1 x 25 = 25	63.50	60.96
G800 284 XXX EU	1 x 24 = 24	60.96	58.42
G800 285 XXX EU	1 x 23 = 23	58.42	55.88
G800 286 XXX EU	1 x 22 = 22	55.88	53.34
G800 287 XXX EU	1 x 21 = 21	53.34	50.80
G800 288 XXX EU	1 x 20 = 20	50.80	48.26
G800 289 XXX EU	1 x 19 = 19	48.26	45.72
G800 290 XXX EU	1 x 18 = 18	45.72	43.18
G800 291 XXX EU	1 x 17 = 17	43.18	40.64
G800 292 XXX EU	1 x 16 = 16	40.64	38.10
G800 293 XXX EU	1 x 15 = 15	38.10	35.56
G800 294 XXX EU	1 x 14 = 14	35.56	33.02
G800 295 XXX EU	1 x 13 = 13	33.02	30.48
G800 296 XXX EU	1 x 12 = 12	30.48	27.94
G800 297 XXX EU	1 x 11 = 11	27.94	25.40
G800 298 XXX EU	1 x 10 = 10	25.40	22.86
G800 299 XXX EU	1 x 9 = 9	22.86	20.32
G800 300 XXX EU	1 x 8 = 8	20.32	17.78
G800 301 XXX EU	1 x 7 = 7	17.78	15.24
G800 302 XXX EU	1 x 6 = 6	15.24	12.70
G800 303 XXX EU	1 x 5 = 5	12.70	10.16
G800 304 XXX EU	1 x 4 = 4	10.16	7.62
G800 305 XXX EU	1 x 3 = 3	7.62	5.08
G800 306 XXX EU	1 x 2 = 2	5.08	2.54
G800 307 XXX EU	1 x 1 = 1	2.54	---
PART NUMBER	NO. OF POS.	A	B



- NOTES:**
- INSULATOR: PBT, COLOR- BLACK
 - PIN CONTACTS: PHOSPHOR BRONZE
 - "XXX"- SELECTIVE PIN CONTACT PLATING
 - "005"- 15μ" GOLD
 - "010"- 30μ" GOLD
 - "018"- FULL GOLD FLASH
 - "025"- 5μ" GOLD
 - THIS PRODUCT DOESN'T CONTAIN ENVIRONMENTAL HAZARDOUS MATERIALS PER DIRECTIVE 2002/95/EC FOR RoHS
 - THE PRODUCT MUST BE FOR DIP PROCESS ONLY



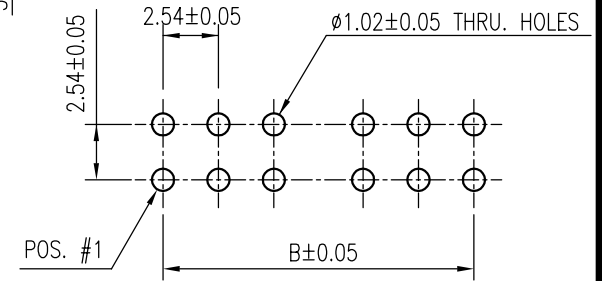
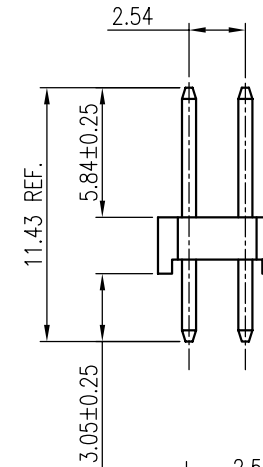
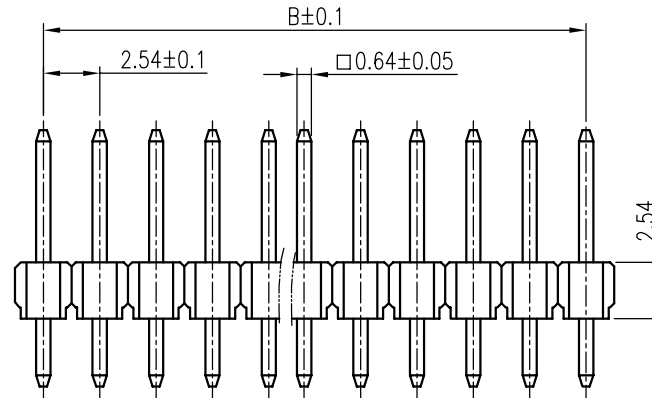
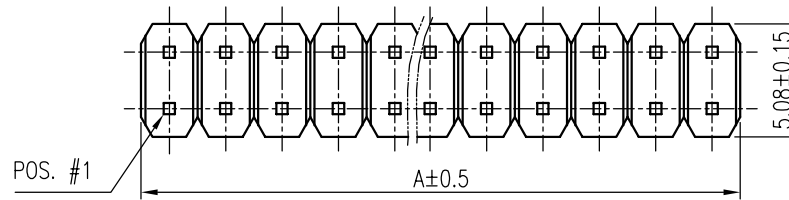
TOLERANCE m/m	APPROVALS	DATE	TITLE		Amphenol®	
x. ±0.30	DRAWN		G800 SERIES SINGLE ROW HEADER 2.54MM PITCH STRAIGHT PCB MOUNT		Amphenol Corporation Amphenol Taiwan Corporation	
x.x ±0.25	CHECKED					
x.xx ±0.15	APPROVED					
x.xxx ±0.08			SCALE	N.A.	SHEET	1 OF 2
ANGULAR ±2°			SIZE	PART NO.	DRAWING NO.	REV.
UNLESS OTHERWISE SPECIFIED		UNIT	A4	G800 XXX XXX EU	HEAD-G800XXXXXXEU_1-13	A

This document is the property of Amphenol Corporation and is delivered on the express condition that it is not to be disclosed, reproduced or used, in whole or in part, for manufacture or sale by anyone other than Amphenol Corporation without its prior consent, and that no right is granted to disclose or to use any information in this document.

CUSTOMER DRAWING

REVISIONS

SYM	ECN No.	DESCRIPTION	DATE	APPROVED
A		RELEASE FOR RoHS	08/22/2005	Henry Ko



RECOMMENDED P.C.B. LAYOUT

- NOTES:
1. INSULATOR: PBT, COLOR- BLACK
 2. PIN CONTACTS: PHOSPHOR BRONZE
 3. "XXX"- SELECTIVE PIN CONTACT PLATING
 - a. "005"- 15μ" GOLD
 - b. "010"- 30μ" GOLD
 - c. "018"- FULL GOLD FLASH
 - d. "025"- 5μ" GOLD
 4. THIS PRODUCT DOESN'T CONTAIN ENVIRONMENTAL HAZARDOUS MATERIALS PER DIRECTIVE 2002/95/EC FOR RoHS
 5. THE PRODUCT MUST BE FOR DIP PROCESS ONLY

G800 556 XXX EU	2 x 40 = 80	101.6	99.06
G800 557 XXX EU	2 x 39 = 78	99.06	96.52
G800 558 XXX EU	2 x 38 = 76	96.52	93.98
G800 559 XXX EU	2 x 37 = 74	93.98	91.44
G800 560 XXX EU	2 x 36 = 72	91.44	88.90
G800 561 XXX EU	2 x 35 = 70	88.90	86.36
G800 562 XXX EU	2 x 34 = 68	86.36	83.82
G800 563 XXX EU	2 x 33 = 66	83.82	81.28
G800 564 XXX EU	2 x 32 = 64	81.28	78.74
G800 565 XXX EU	2 x 31 = 62	78.74	76.20
G800 566 XXX EU	2 x 30 = 60	76.20	73.66
G800 567 XXX EU	2 x 29 = 58	73.66	71.12
G800 568 XXX EU	2 x 28 = 56	71.12	68.58
G800 569 XXX EU	2 x 27 = 54	68.58	66.04
G800 570 XXX EU	2 x 26 = 52	66.04	63.50
G800 571 XXX EU	2 x 25 = 50	63.50	60.96
G800 572 XXX EU	2 x 24 = 48	60.96	58.42
G800 573 XXX EU	2 x 23 = 46	58.42	55.88
G800 574 XXX EU	2 x 22 = 44	55.88	53.34
G800 575 XXX EU	2 x 21 = 42	53.34	50.80
G800 576 XXX EU	2 x 20 = 40	50.80	48.26
G800 577 XXX EU	2 x 19 = 38	48.26	45.72
G800 578 XXX EU	2 x 18 = 36	45.72	43.18
G800 579 XXX EU	2 x 17 = 34	43.18	40.64
G800 580 XXX EU	2 x 16 = 32	40.64	38.10
G800 581 XXX EU	2 x 15 = 30	38.10	35.56
G800 582 XXX EU	2 x 14 = 28	35.56	33.02
G800 583 XXX EU	2 x 13 = 26	33.02	30.48
G800 584 XXX EU	2 x 12 = 24	30.48	27.94
G800 585 XXX EU	2 x 11 = 22	27.94	25.40
G800 586 XXX EU	2 x 10 = 20	25.40	22.86
G800 587 XXX EU	2 x 9 = 18	22.86	20.32
G800 588 XXX EU	2 x 8 = 16	20.32	17.78
G800 589 XXX EU	2 x 7 = 14	17.78	15.24
G800 590 XXX EU	2 x 6 = 12	15.24	12.70
G800 591 XXX EU	2 x 5 = 10	12.70	10.16
G800 592 XXX EU	2 x 4 = 8	10.16	7.62
G800 593 XXX EU	2 x 3 = 6	7.62	5.08
G800 594 XXX EU	2 x 2 = 4	5.08	2.54
PART NUMBER	NO. OF POS.	A	B

TOLERANCE m/m	APPROVALS	DATE	TITLE	
x. ±0.30	DRAWN		G800 SERIES DOUBLE ROW HEADER 2.54MM PITCH STRAIGHT PCB MOUNT	
x.x ±0.25	CHECKED			
x.xx ±0.15	APPROVED			
x.xxx ±0.08			SIZE	PART NO.
ANGULAR ±2°			UNIT	DRAWING NO.
UNLESS OTHERWISE SPECIFIED		MM	A4	G800 XXX XXX EU
				HEAD-G800XXXXXXEU_2-13
				SCALE N.A. SHEET 2 OF 2
				REV. A

Amphenol®
Amphenol Corporation
Amphenol Taiwan Corporation

X-ON Electronics

Largest Supplier of Electrical and Electronic Components

Click to view similar products for [I/O Connectors](#) category:

Click to view products by [Amphenol](#) manufacturer:

Other Similar products are found below :

[571763P](#) [58098-0628](#) [61-168618-12P](#) [D38999/20FJ29SB L/C](#) [72.250.1628.2](#) [72.250.2428.2](#) [74720-0505](#) [747680210](#) [76.350.0729.0](#) [76871-1403](#) [FCN-244F080-G/1](#) [FCN-260A9920](#) [FCN-268D024-G/2F#10X-R10](#) [MP-5T180MUNNA-005](#) [MP-5XRJ45UNNB-003](#) [PCS-E50FA](#) [PCS-XE26LKA](#) [PCS-XE26MA+](#) [PCS-XES68MS+](#) [G38A71314B](#) [91-569719-35R](#) [9776-18-6](#) [DX40-50P\(55\)](#) [1571250010](#) [157-22500-3](#) [MS3471L14-19P L/C](#) [171224-6031](#) [1888020-8](#) [91-569786-35H](#) [91-569786-35M](#) [91-644626-35P](#) [172501-4002](#) [172501-6002](#) [FCN-260C008-A/L0](#) [FCN-260C024-AL0](#) [FCN-261Z008](#) [FCN-268D008-G/1K](#) [2000314-1](#) [200331-1](#) [2007498-2](#) [PCR-E28LMDAG1+](#) [PCR-E36FC+](#) [PCS-E28FS+](#) [PCS-XE26SLFD+](#) [PCS-XE26SLFDT+](#) [G38A71214B](#) [HDRA-E68W1LFDTC-SL+](#) [HDR-E14MSG1+](#) [R88A-CNK81S](#) [CRT1-ATT02](#)