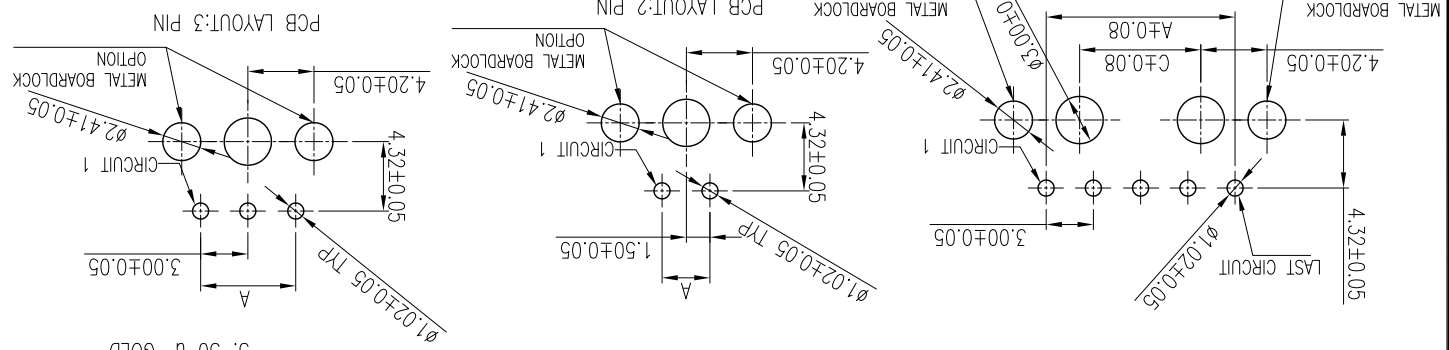
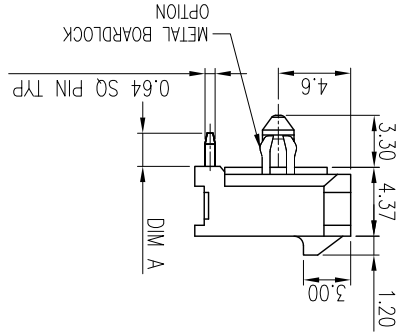
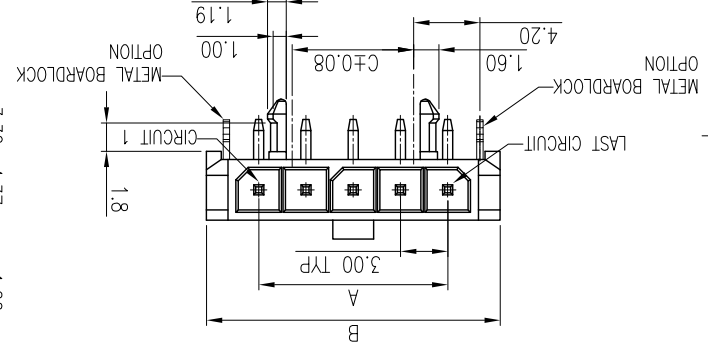
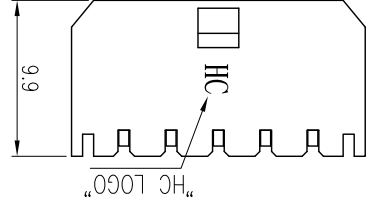


This document is the property of Amphenol Corporation and is delivered on the express condition that it not be disclosed, reproduced or used, in whole or in part, for manufacture or sale by anyone other than Amphenol Corporation without its prior consent, and that no right is granted to disclose or to use any information in this document. The marking on this product doesn't contain environmental hazardous materials per Material Specification 55-00259 for Sony GP compliant or per directive 2011/65/EU for RoHS compliant.



POS.	B	A	C
12	39.65	33.0	28.70
11	36.65	30.0	25.70
10	33.65	27.0	22.70
9	30.65	24.0	19.70
8	27.65	21.0	16.70
7	24.65	18.0	13.70
6	21.65	15.0	10.70
5	18.65	12.0	7.70
4	15.65	9.0	4.70
3	12.65	6.0	NA
2	9.65	3.0	NA
02			

PART NO. G88MPBXX02XXEU  
 DIM A / PACKING OPTIONS/METAL BOARDLOCK  
 C1: 2.10mm/TRAY/ W/O METAL BOARDLOCK  
 C: 3.20mm/TRAY/ W/O METAL BOARDLOCK  
 C3: 2.10mm/TRAY/ W/METAL BOARDLOCK  
 C4: 3.20mm/TRAY/ W/METAL BOARDLOCK  
 1R: 2.10mm/T&R/ W/O METAL BOARDLOCK  
 2R: 3.20mm/T&R/ W/O METAL BOARDLOCK  
 3R: 2.10mm/T&R/ W/METAL BOARDLOCK  
 4R: 3.20mm/T&R/ W/METAL BOARDLOCK  
 CONTACT FINISH  
 0: MATTE TIN (OVERALL)  
 1: FLASH GOLD (OVERALL)  
 2: 15 u" GOLD  
 3: 30 u" GOLD  
 50 u" THICKNESS MIN  
 UNDER PLATING NICKEL  
 METAL BOARDLOCK  
 MATTE TIN PLATING 100 u" THICKNESS MIN.;  
 UNDER PLATING: NICKEL PLATING 50 u" THICKNESS MIN. OVERALL.  
 SOLDERING AREA: MATTE TIN PLATING 100 u" THICKNESS MIN.;  
 UNDER PLATING: NICKEL PLATING 50 u" THICKNESS MIN. OVERALL.  
 CONTACT AREA: SELECTIVE PLATING;  
 TERMINAL:  
 FINISH:  
 METAL BOARDLOCK: COPPER ALLOY.  
 HOUSING: HIGH PERFORMANCE COPPER ALLOY.  
 1. MATERIAL:  
 HOUSING: HIGH TEMPERATURE THERMAL PLASTIC, LCP, UL94V-0, COLOR: BLACK.

NOTES:  
 1. MATERIAL:  
 HOUSING: HIGH TEMPERATURE THERMAL PLASTIC, LCP, UL94V-0, COLOR: BLACK.  
 TERMINAL: HIGH PERFORMANCE COPPER ALLOY.  
 METAL BOARDLOCK: COPPER ALLOY.  
 2. FINISH:  
 CONTACT AREA: SELECTIVE PLATING;  
 TERMINAL:  
 FINISH:  
 METAL BOARDLOCK: COPPER ALLOY.  
 SOLDERING AREA: MATTE TIN PLATING 100 u" THICKNESS MIN.;  
 UNDER PLATING: NICKEL PLATING 50 u" THICKNESS MIN. OVERALL.  
 METAL BOARDLOCK:  
 MATTE TIN PLATING 100 u" THICKNESS MIN.;  
 UNDER PLATING: NICKEL PLATING 50 u" THICKNESS MIN. OVERALL.  
 3. PACKING IS PER AMTA PACKING SPECIFICATION PK5-0001.  
 4. THIS PRODUCT DOESN'T CONTAIN ENVIRONMENTAL HAZARDOUS PER DIRECTIVE 2011/65/EU FOR ROHS COMPLIANT.  
 5. PRODUCT SPECIFICATION REFER TO : PS-7528  
 6. TO ENSURE CURRENT RATING CAPABILITY, PLEASE ADOPT TOTAL SOLUTION.  
 (G88MPH CABLE HOUSING SERIES WITH G88MPC CABLE TERMINAL SERIES)

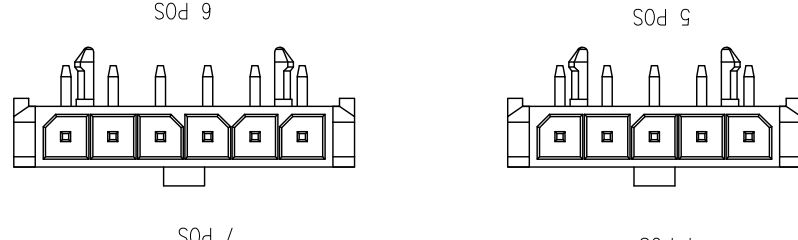
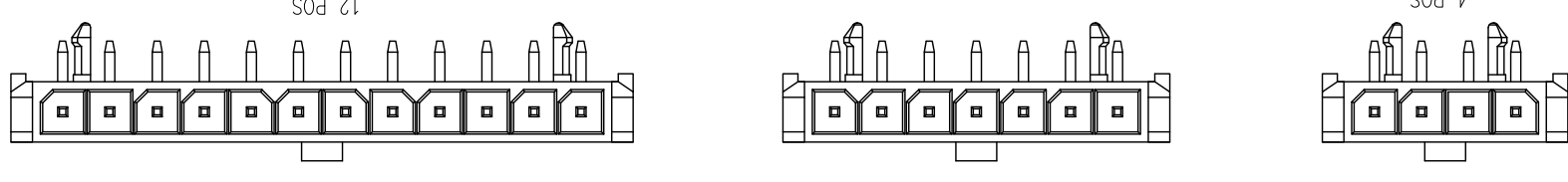
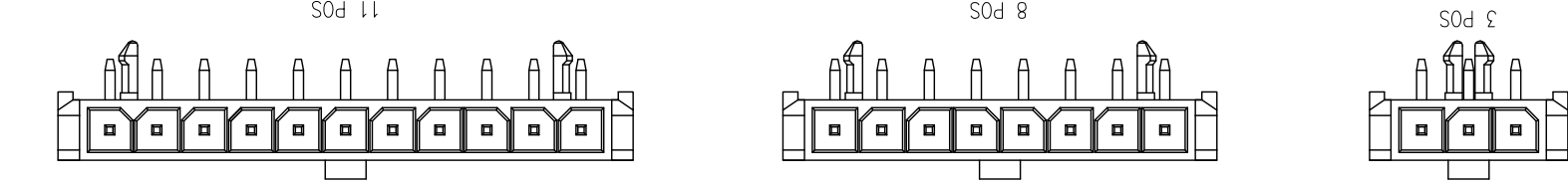
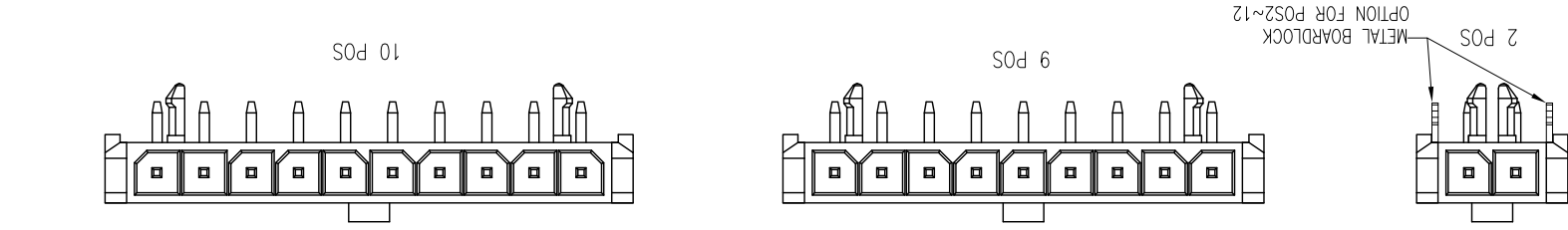
REV	DATE	DESCRIPTION	APPROVED
A	05/21/2014	RELEASE TO PRODUCTION	Aron Lin
B	02/02/2015	COMBINE DRAWING FOR PACKAGE AND TAIL OPTIONS.	Aron Lin
C	05/13/2016	ADDED METAL BOARDLOCK OPTION	Roger Tsai

REV	DWG No.	SHEET	SCALE	UNIT	PROJECT CODE	DATE	APPROVALS	TOLERANCE
8	G88MPBXX02XXEU	1 OF 5	NA	mm	PHD	05/13/2016	APPROVED: Roger Tsai CHECKED: Roger Tsai DRAWN: Aqua Chou	UNLESS OTHERWISE SPECIFIED: ANGULAR ±1 X.XX ±0.30 X.XX ±0.20 X.XXX ±0.10
7	G88MPBXX02XXEU	A3	mm		CUST DWG	05/13/2016	APPROVED: Roger Tsai	
6	G88MPBXX02XXEU	A3	mm		PHD	05/13/2016	APPROVED: Roger Tsai	
5	G88MPBXX02XXEU	A3	mm		PHD	05/13/2016	APPROVED: Roger Tsai	
4	G88MPBXX02XXEU	A3	mm		PHD	05/13/2016	APPROVED: Roger Tsai	
3	G88MPBXX02XXEU	A3	mm		PHD	05/13/2016	APPROVED: Roger Tsai	
2	G88MPBXX02XXEU	A3	mm		PHD	05/13/2016	APPROVED: Roger Tsai	
1	G88MPBXX02XXEU	A3	mm		PHD	05/13/2016	APPROVED: Roger Tsai	

Amphenol  
 Amphenol Corporation  
 Amphenol Taiwan Corporation  
 S/R R/A DIP TYPE  
 POWER PLUS 3.0 PITCH  
 G88MP SERIES MICRO

This document is the property of Amphenol Corporation and is delivered on the express condition that it is not to be disclosed, reproduced or used, in whole or in part, for manufacture or sale by anyone other than Amphenol Corporation without its prior consent, and that no right is granted to disclose or to use any information in this document. The marking on this product doesn't contain environmental hazardous materials per Material Specification 5S-00259 for Sony GP compliant or per directive 2011/65/EU for RoHS compliant.

SYM	ECN No.	DESCRIPTION	DATE	APPROVED
A	NE-14096	RELEASE TO PRODUCTION	05/21/2014	Aron Lin
B	NE-15016	COMBINE DRAWING FOR PACKAGE AND TAIL OPTIONS.	02/02/2015	Aron Lin
C	NE-16117	ADDED METAL BOARDLOCK OPTION	05/13/2016	Roger Tsai



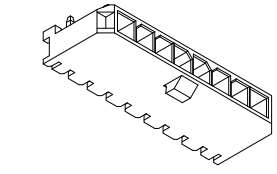
TOLERANCE		APPROVALS	DATE	TITLE	G88MP SERIES MICRO POWER PLUS 3.0 PITCH S/R R/A DIP TYPE		Amphenol Corporation Amphenol Taiwan Corporation	
UNLESS OTHERWISE SPECIFIED		APPROVED	05/13/2016	PROJECT CODE	PHD	SCALE	UNIT	SIZE
ANGULAR ±1°		CHECKED	05/13/2016	PROJECT CODE	PHD	NA	mm	A3
X.XX ±0.10		DRAWN	05/13/2016	CUST DWG	CUST DWG	NA	mm	A3
X.X ±0.30		APPROVED	05/13/2016	DWG TYPE	CUST DWG	NA	mm	A3
X.XX ±0.20		APPROVED	05/13/2016	DWG TYPE	CUST DWG	NA	mm	A3
X.XX ±0.10		APPROVED	05/13/2016	DWG TYPE	CUST DWG	NA	mm	A3
X.X ±0.30		APPROVED	05/13/2016	DWG TYPE	CUST DWG	NA	mm	A3
X.XX ±0.20		APPROVED	05/13/2016	DWG TYPE	CUST DWG	NA	mm	A3
X.XX ±0.10		APPROVED	05/13/2016	DWG TYPE	CUST DWG	NA	mm	A3
ANGULAR ±1°		APPROVED	05/13/2016	DWG TYPE	CUST DWG	NA	mm	A3

REV. C	DWG No. G88MPBXX0X2XXEU
REV. C	PART No. G88MPBXX0X2XXEU

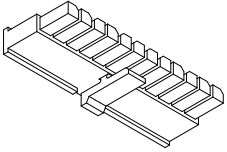
This document is the property of Amphenol Corporation and is delivered on the express condition that it is not to be disclosed, reproduced or used, in whole or in part, for manufacture or sale by anyone other than Amphenol Corporation without its prior consent, and that no right is granted to disclose or to use any information in this document.  
 The marking on this product doesn't contain environmental hazardous materials per Material Specification 55-00259 for Sony GP compliant or per directive 2011/65/EU for RoHS compliant.

SYM	ECN No.	DESCRIPTION	DATE	APPROVED
A	NE-14096	RELEASE TO PRODUCTION	05/21/2014	Arron Lin
B	NE-15016	COMBINE DRAWING FOR PACKAGE AND TAIL OPTIONS.	02/02/2015	Arron Lin
C	NE-16117	ADDED METAL BOARDLOCK OPTION	05/13/2016	Roger Tsai

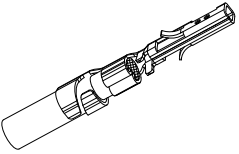
REVISIONS



AMPHENOL BOARD-MOUNT



AMPHENOL CABLE HOUSING

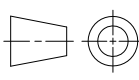


AMPHENOL CABLE TERMINAL

NOTE: TO ENSURE CURRENT RATING CAPABILITY, (G88MPH CABLE HOUSING SERIES WITH G88MPC CABLE TERMINAL SERIES)

POS.	BOARD-MOUNT P/N	CABLE HOUSING P/N	CABLE TERMINAL P/N	AWG NO.	AWG#16~18	AWG#20~30	AWG#16~18	AWG#20~30
02	G88MPB020X2XXEU	G88MPH0221CEU	G88MPCX332CEU	0: TIN 100" ; 1: FLASH GOLD	2: 15" GOLD ; 3: 30" GOLD	0: TIN 100" ; 1: FLASH GOLD	2: 15" GOLD ; 3: 30" GOLD	0: TIN 100" ; 1: FLASH GOLD
03	G88MPB030X2XXEU	G88MPH0321CEU	G88MPCX332CEU	0: TIN 100" ; 1: FLASH GOLD	2: 15" GOLD ; 3: 30" GOLD	0: TIN 100" ; 1: FLASH GOLD	2: 15" GOLD ; 3: 30" GOLD	0: TIN 100" ; 1: FLASH GOLD
04	G88MPB040X2XXEU	G88MPH0421CEU	G88MPCX332CEU	0: TIN 100" ; 1: FLASH GOLD	2: 15" GOLD ; 3: 30" GOLD	0: TIN 100" ; 1: FLASH GOLD	2: 15" GOLD ; 3: 30" GOLD	0: TIN 100" ; 1: FLASH GOLD
05	G88MPB050X2XXEU	G88MPH0521CEU	G88MPCX332CEU	0: TIN 100" ; 1: FLASH GOLD	2: 15" GOLD ; 3: 30" GOLD	0: TIN 100" ; 1: FLASH GOLD	2: 15" GOLD ; 3: 30" GOLD	0: TIN 100" ; 1: FLASH GOLD
06	G88MPB060X2XXEU	G88MPH0621CEU	G88MPCX332CEU	0: TIN 100" ; 1: FLASH GOLD	2: 15" GOLD ; 3: 30" GOLD	0: TIN 100" ; 1: FLASH GOLD	2: 15" GOLD ; 3: 30" GOLD	0: TIN 100" ; 1: FLASH GOLD
07	G88MPB070X2XXEU	G88MPH0721EU	G88MPCX332CEU	0: TIN 100" ; 1: FLASH GOLD	2: 15" GOLD ; 3: 30" GOLD	0: TIN 100" ; 1: FLASH GOLD	2: 15" GOLD ; 3: 30" GOLD	0: TIN 100" ; 1: FLASH GOLD
08	G88MPB080X2XXEU	G88MPH0821CEU	G88MPCX332CEU	0: TIN 100" ; 1: FLASH GOLD	2: 15" GOLD ; 3: 30" GOLD	0: TIN 100" ; 1: FLASH GOLD	2: 15" GOLD ; 3: 30" GOLD	0: TIN 100" ; 1: FLASH GOLD
09	G88MPB090X2XXEU	G88MPH0921CEU	G88MPCX332CEU	0: TIN 100" ; 1: FLASH GOLD	2: 15" GOLD ; 3: 30" GOLD	0: TIN 100" ; 1: FLASH GOLD	2: 15" GOLD ; 3: 30" GOLD	0: TIN 100" ; 1: FLASH GOLD
10	G88MPB100X2XXEU	G88MPH1021CEU	G88MPCX332CEU	0: TIN 100" ; 1: FLASH GOLD	2: 15" GOLD ; 3: 30" GOLD	0: TIN 100" ; 1: FLASH GOLD	2: 15" GOLD ; 3: 30" GOLD	0: TIN 100" ; 1: FLASH GOLD
11	G88MPB110X2XXEU	G88MPH1121CEU	G88MPCX332CEU	0: TIN 100" ; 1: FLASH GOLD	2: 15" GOLD ; 3: 30" GOLD	0: TIN 100" ; 1: FLASH GOLD	2: 15" GOLD ; 3: 30" GOLD	0: TIN 100" ; 1: FLASH GOLD
12	G88MPB120X2XXEU	G88MPH1221CEU	G88MPCX332CEU	0: TIN 100" ; 1: FLASH GOLD	2: 15" GOLD ; 3: 30" GOLD	0: TIN 100" ; 1: FLASH GOLD	2: 15" GOLD ; 3: 30" GOLD	0: TIN 100" ; 1: FLASH GOLD

TOLERANCE		APPROVALS	DATE	TITLE
UNLESS OTHERWISE SPECIFIED	ANGULAR ±1° X.XX X.XX X.X ±0.30 ±0.20 ±0.10	DRAWN	05/13/2016	G88MP SERIES MICRO
		CHECKED	05/13/2016	POWER PLUS 3.0 PITCH
		APPROVED	05/13/2016	S/R R/A DIP TYPE
CUST DWG		PHD	PROJECT CODE	SCALE
DWG TYPE		APPROVED	05/13/2016	NA
ROGER TSAI		CHECKED	05/13/2016	UNIT
ROGER TSAI		DRAWN	05/13/2016	mm
SHEET		SIZE	A3	3 OF 5
DWG No.		G88MPBXX0X2XXEU		
PART No.		G88MPBXX0X2XXEU		
REV. C		Amphenol Corporation		
		Amphenol Taiwan Corporation		



8

7

6

5

4

3

2

1

F

E

D

C

B

A

F

E

D

C

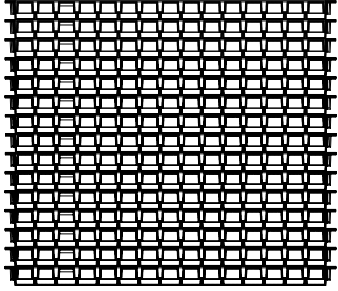
B

A

This document is the property of Amphenol Corporation and is delivered on the express condition that it is not to be disclosed, reproduced or used, in whole or in part, for manufacture or sale by anyone other than Amphenol Corporation without its prior consent, and that no right is granted to disclose or to use any information in this document.  
 The marking on this product doesn't contain environmental hazardous materials per Material Specification 5S-00259 for Sony GP compliant or per directive 2011/65/EU for RoHS compliant.

SYM	ECN No.	DESCRIPTION	DATE	APPROVED
A	NE-14096	RELEASE TO PRODUCTION	05/21/2014	Arron Lin
B	NE-15016	COMBINE DRAWING FOR PACKAGE AND TAIL OPTIONS.	02/02/2015	Arron Lin
C	NE-16117	ADDED METAL BOARDLOCK OPTION	05/13/2016	Roger Tsoi

REVISIONS



TRAY TOP COVER

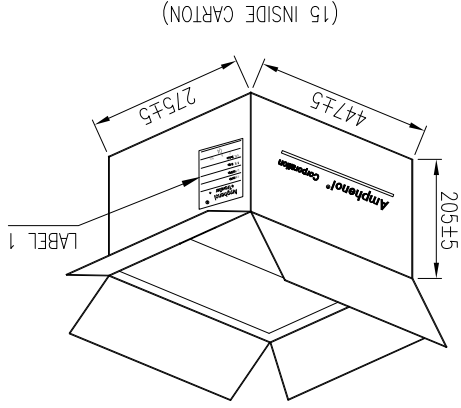


428(L)\*265(W)\*10.2(H)



TRAY BOTTOM COVER

427(L)\*263(W)\*7.4(H)



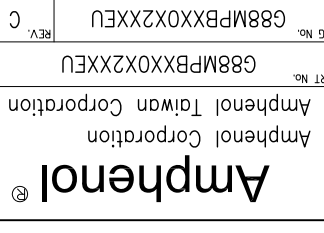
(15 INSIDE CARTON)

POS	PCS/TRAY	PCS/CARTON
02	574	8610
03	434	6510
04	350	5250
05	294	4410
06	252	3780
07	224	3360
08	196	2940
09	182	2730
10	154	2310
11	140	2100
12	140	2100

TOLERANCE	APPROVALS	DATE	TITLE
X. X.X X.XX X.XXX ±1.	DRAWN Aqua Chou CHECKED Roger Tsoi APPROVED Roger Tsoi	05/13/2016 05/13/2016 05/13/2016	G88MP SERIES MICRO POWER PLUS 3.0 PITCH S/R R/A DIP TYPE
UNLESS OTHERWISE SPECIFIED	CUST DWG	PHD	
DWG TYPE	DWG TYPE	PROJECT CODE	SCALE
REV. C	G88MPBXX0X2XXEU	4 OF 5	NA

DWG No.	SHEET	SIZE	UNIT
G88MPBXX0X2XXEU	4 OF 5	A3	mm

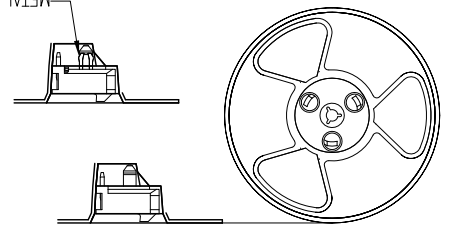
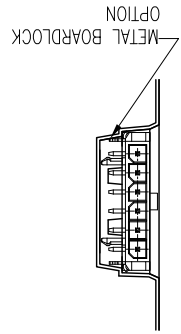
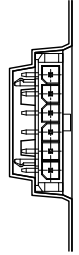
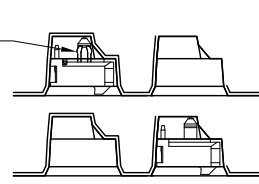
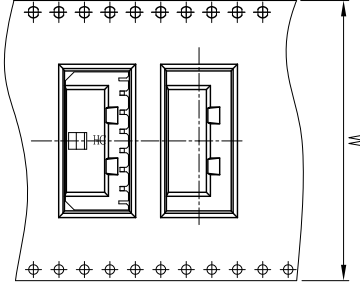
Part No.	Amphenol Corporation
G88MPBXX0X2XXEU	Amphenol Taiwan Corporation



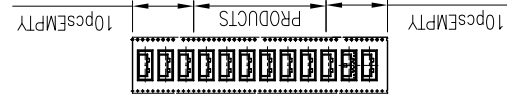
Amphenol®  
Amphenol Corporation

This document is the property of Amphenol Corporation and is delivered on the express condition that it is not to be disclosed, reproduced or used, in whole or in part, for manufacture or sale by anyone other than Amphenol Corporation without its prior consent, and that no right is granted to disclose or to use any information in this document.  
 The marking on this product doesn't contain environmental hazardous materials per Material Specification 5S-00259 for Sony GP compliant or per directive 2011/65/EU for RoHS compliant.

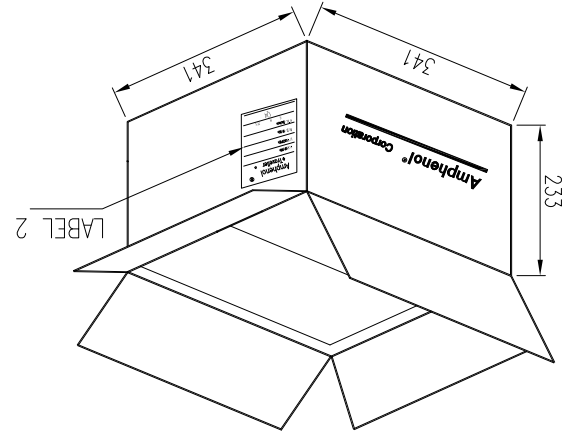
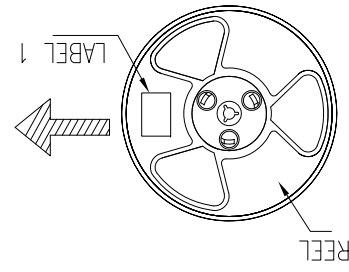
REVISIONS			
SYM	ECN No.	DESCRIPTION	DATE
A	NE-14096	RELEASE TO PRODUCTION	05/21/2014
B	NE-15016	COMBINE DRAWING FOR PACKAGE AND TAIL OPTIONS.	02/02/2015
C	NE-16117	ADDED METAL BOARDLOCK OPTION	05/13/2016



PULL OUT DIRECTION



Amphenol Taiwan Corporation	
G.W : XX KG	RoHS
DATE : XX / XX / XXXX	
MM / DD / YYYY	
P/O : XXX-XXXXXX-XXX	
QTY : XX	
P/N :	



POS	W	Pcs/REEL	Pcs/CARTON
02	24	400	2800
03	24	400	2800
04	32	400	2000
05	32	400	2000
06	44	400	1600
07	44	400	1600
08	44	400	1600
09	56	400	1200
10	56	400	1200
11	56	400	1200
12	56	400	1200

UNLESS OTHERWISE SPECIFIED	DWG TYPE	CUST DWG	PHD	SCALE	NA	SHEET	5 OF 5	DWG No.	G88MPBXX02XXEU	REV.	C
TOLERANCE	DRAWN	APPROVALS	DATE	UNIT	mm	SIZE	A3	PART No.	G88MPBXX02XXEU	F	
X X.X X.XX X.XXX	±1	APPROVED	05/13/2016	G88MP SERIES MICRO							
±0.30		CHECKED	05/13/2016	S/R R/A DIP TYPE							
±0.20			05/13/2016	POWER PLUS 3.0 PITCH							
±0.10				Amphenol Taiwan Corporation							
				Amphenol Corporation							

## X-ON Electronics

Largest Supplier of Electrical and Electronic Components

*Click to view similar products for [Power to the Board](#) category:*

*Click to view products by [Amphenol](#) manufacturer:*

Other Similar products are found below :

[10131318-08512GRLF](#) [6450171-4](#) [6450552-7](#) [6600323-8](#) [6643429-1](#) [6646040-2](#) [6651939-1](#) [6766604-1](#) [120959-1](#) [1393557-2](#) [1393532-2](#)  
[1393532-3](#) [1393532-4](#) [1393557-1](#) [1600812-5](#) [1-6450861-2](#) [1645595-1](#) [1743490-1](#) [1744132-7](#) [1761122-1](#) [1766169-1](#) [1766250-1](#) [18362](#)  
[1892109-1](#) [1-967627-6](#) [2226808-1](#) [2-6450860-5](#) [2-6450860-6](#) [2-6450870-0](#) [93003-0502](#) [953552-1](#) [1-6450161-4](#) [1-6450850-6](#) [1645526-2](#) [1-](#)  
[6600130-0](#) [1743419-1](#) [1766150-1](#) [2005243-2](#) [211110-1](#) [2-6600130-2](#) [TE34-12-16P-F0](#) [51700-10201602AALF](#) [5-6450830-6](#) [5646956-4](#)  
[36662-0005](#) [40585-3000](#) [4-6450830-9](#) [4-6600333-3](#) [51142-0214](#) [10125416-4050LF](#)