

Mini Cool Edge IO Connector

NEXT-GENERATION HIGH SPEED INTERCONNECT SOLUTION – UP TO 56G PAM4/PCIe® Gen 4/ PCIe® Gen 5

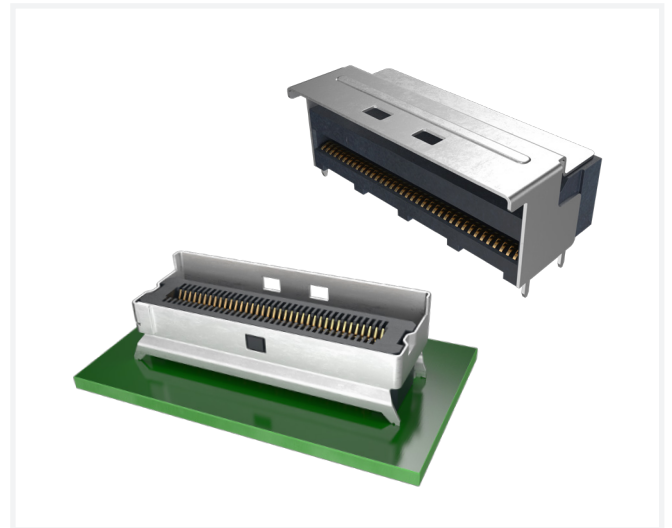
Amphenol ICC introduces the next-generation OverPass™ solution – Mini Cool Edge IO. The 0.60mm pitch connector come with a slim form factor design, capable of transmitting high-speed signal up to 56G PAM4/PCIe® Gen 4/PCIe® Gen 5, and allowing much greater signal path lengths while maintaining SI performance when compared to conventional pcb routing methods.

Mini Cool Edge IO not only provides a SI performance ready signal transmission but also a new way of system design that is cost-effective, highly modular, scalable, and extremely easy to repair.

- High speed – 56Gb/s PAM4 /PCIe® Gen 4/PCIe® Gen 5 capability
- Supports both cable and card edge connection

FEATURES

- 0.60mm pitch, vertical and right angle configurations
- Up to 56Gb/s PAM4, PCIe® Gen 4, PCIe® Gen 5, over 1.0 meter transmission distance
- Supports both cable and card edge applications with one identical connector
- Optional for 92Ω (G42 series), 85Ω (G97 series) and 95Ω (G98 series) impedance and various pin number options – meeting PCIe®/NVMe/SAS/SFP(+)/QSFP specifications



TARGET MARKETS



BENEFITS

- Slim form factor for compact data center system designs
- Extends transmission range far more over the conventional PCB routes
- Provides flexibility in system design to meet highly modular, scalable and easy-to-repair requirements
- Saves system material cost, engineering and certification expenses with high succession of system design

▶ Mini Cool Edge IO Connector

TECHNICAL INFORMATION

MATERIAL

- Contact Base Metal: Copper alloy
- Contact Area Finish: Gold over nickel
- Solder Area Finish: Tin over nickel
- Housing & Spacer: High temperature thermoplastic (UL 94V-0)
- Shorting Bar: Conductive pastic
- Cage: Stainless steel, nickel plating overall

ELECTRICAL PERFORMANCE

- Contact Resistance: 30mΩ max. initial; 15mΩ max. change after test
- Dielectric Withstanding Voltage: 300V DC

MECHANICAL PERFORMANCE

- Durability: 250 mating cycles
- Mating Force: 0.6N/pin max.
- Unmating Force: 0.06N/pin min.

APPROVALS & CERTIFICATION

- UL

ENVIRONMENTAL

- Humidity: EIA-364-31, Method III, Subject unmated specimens to 24 cycles between 25°C/ 80%RH and 65°C/ 50% RH
- Temperature Life: EIA-364-17, Method A Test Condition 2, Test Time Condition C, Subject mated specimens to 105°C for 168 hours
- Thermal Shock: EIA-364-32, Method A Test condition 1, -55°C to 85°C (10 cycles)

SPECIFICATIONS

- Amphenol Product Specification:
 - G42 series-PS-7681
 - G97 series-PS-7755
 - G98 series-PS-7793

PACKAGING

- Carrier Tape

TARGET MARKETS/APPLICATIONS



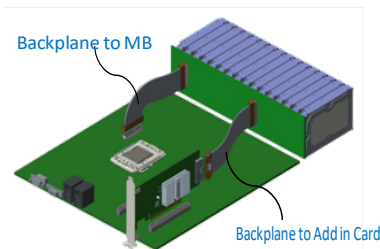
Baseband
Commercial Systems
Networking
Radio Units



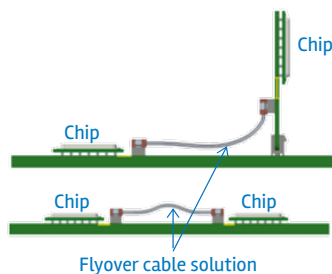
High-end Computing System
Server and Storage Systems

Amphenol OverPass™ Applications

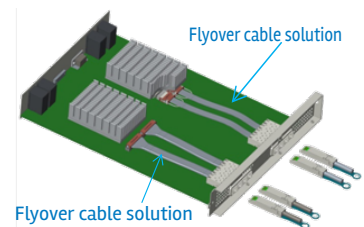
Miplane to MB Flyover



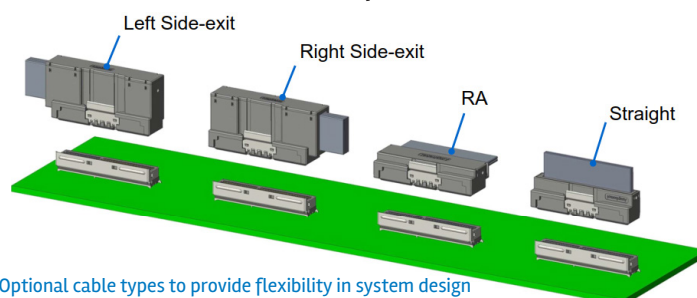
Chip to Chip Flyover



Chip to External IO Flyover

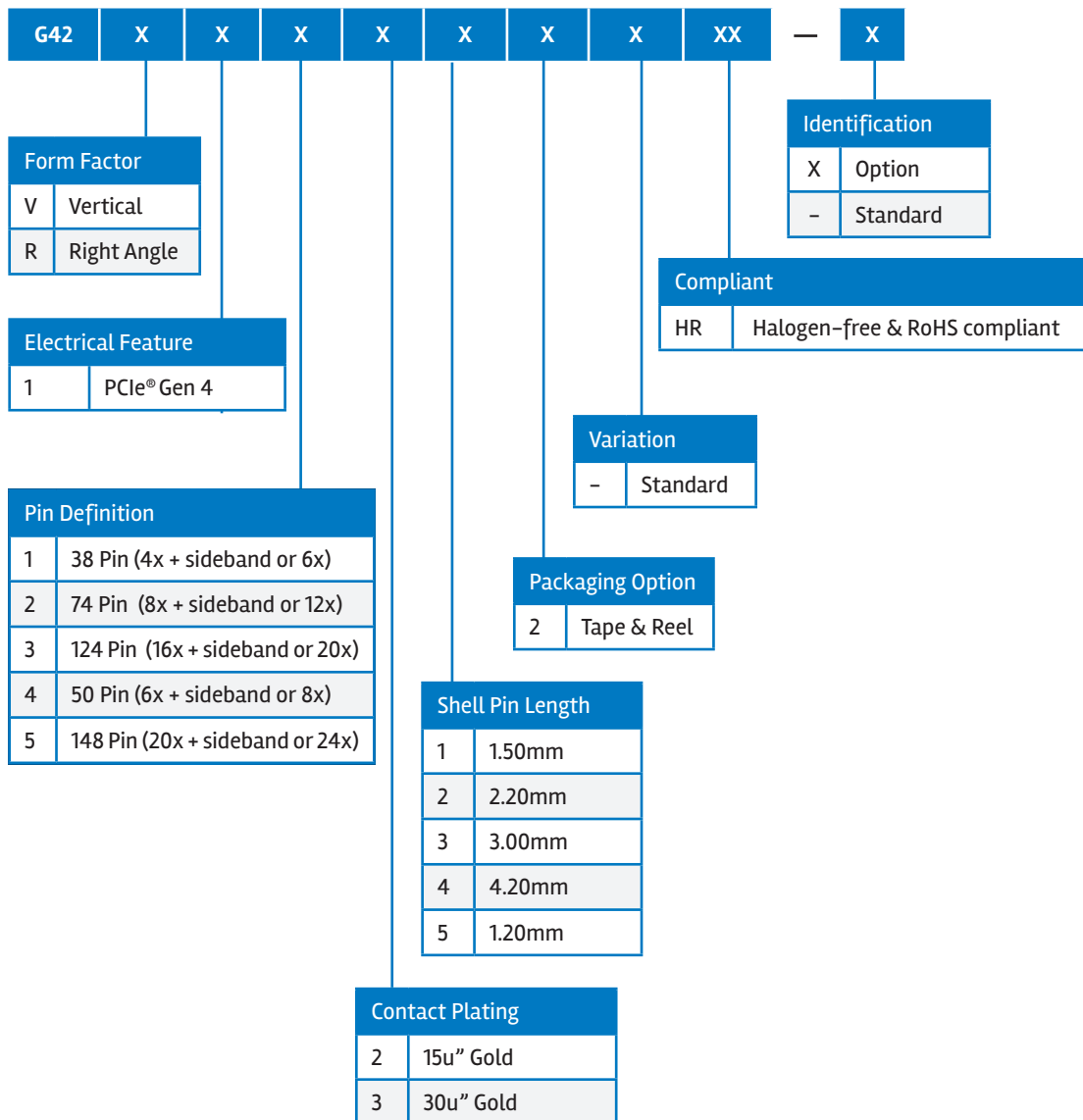


Cable Options

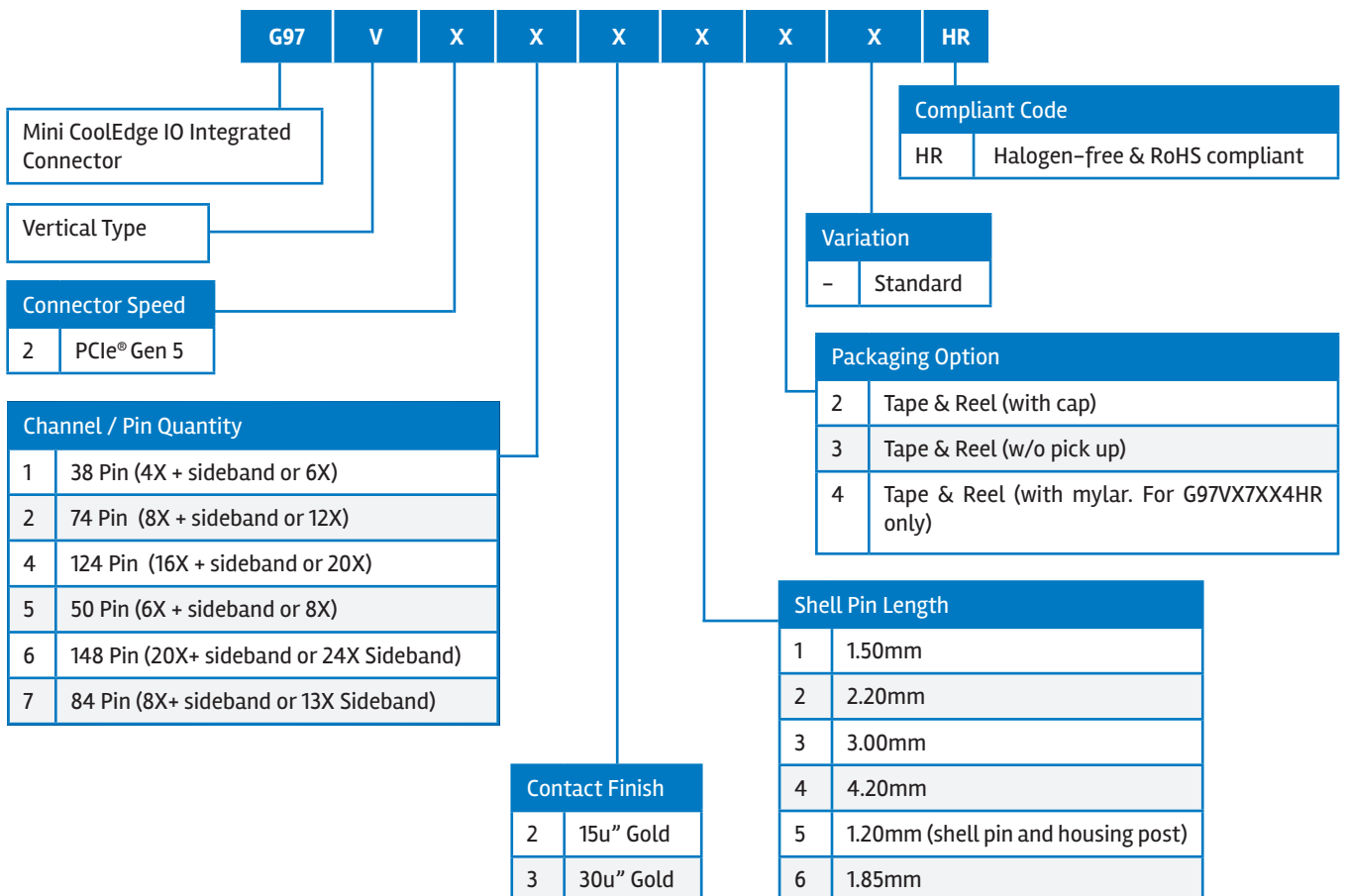
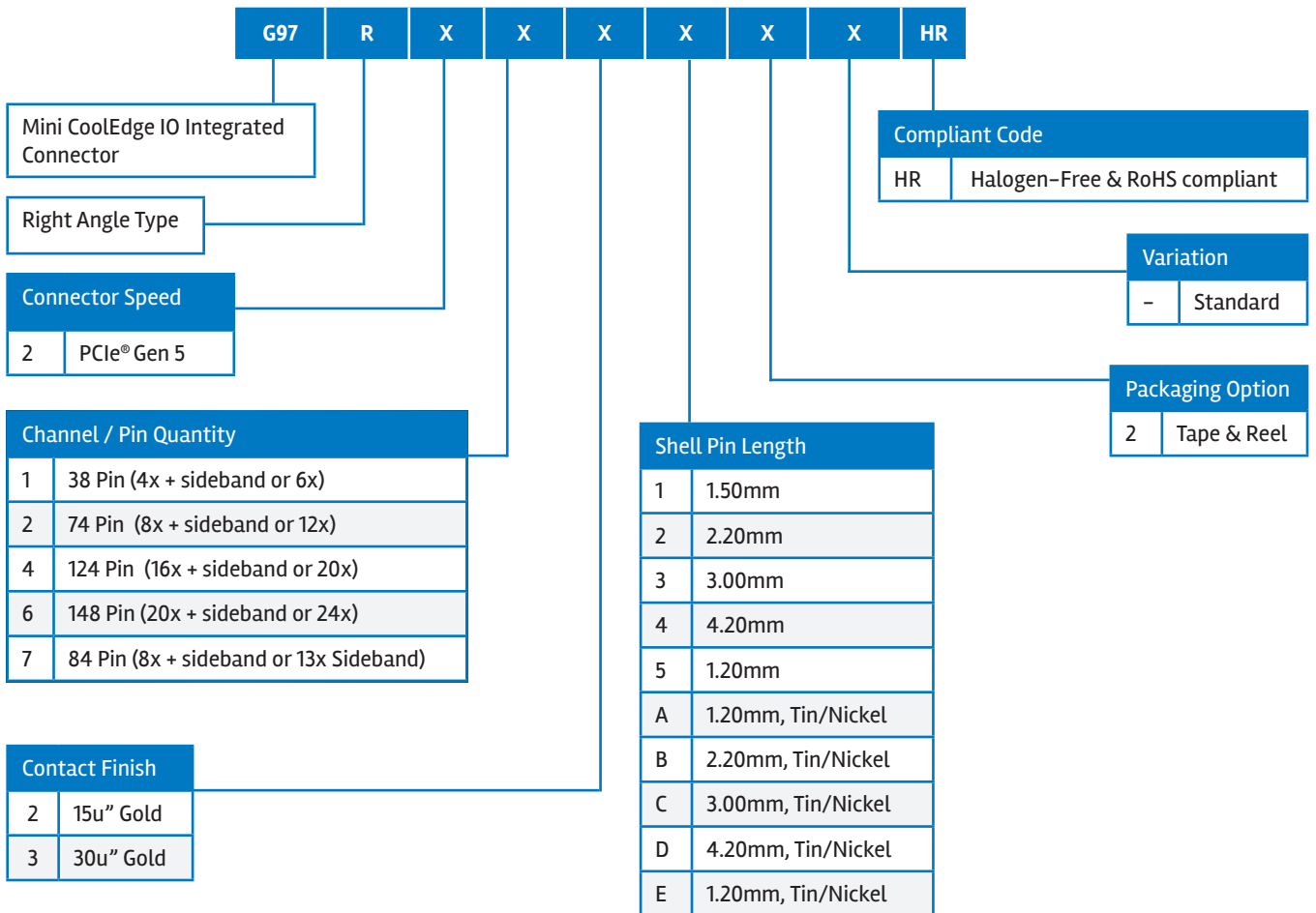


Optional cable types to provide flexibility in system design

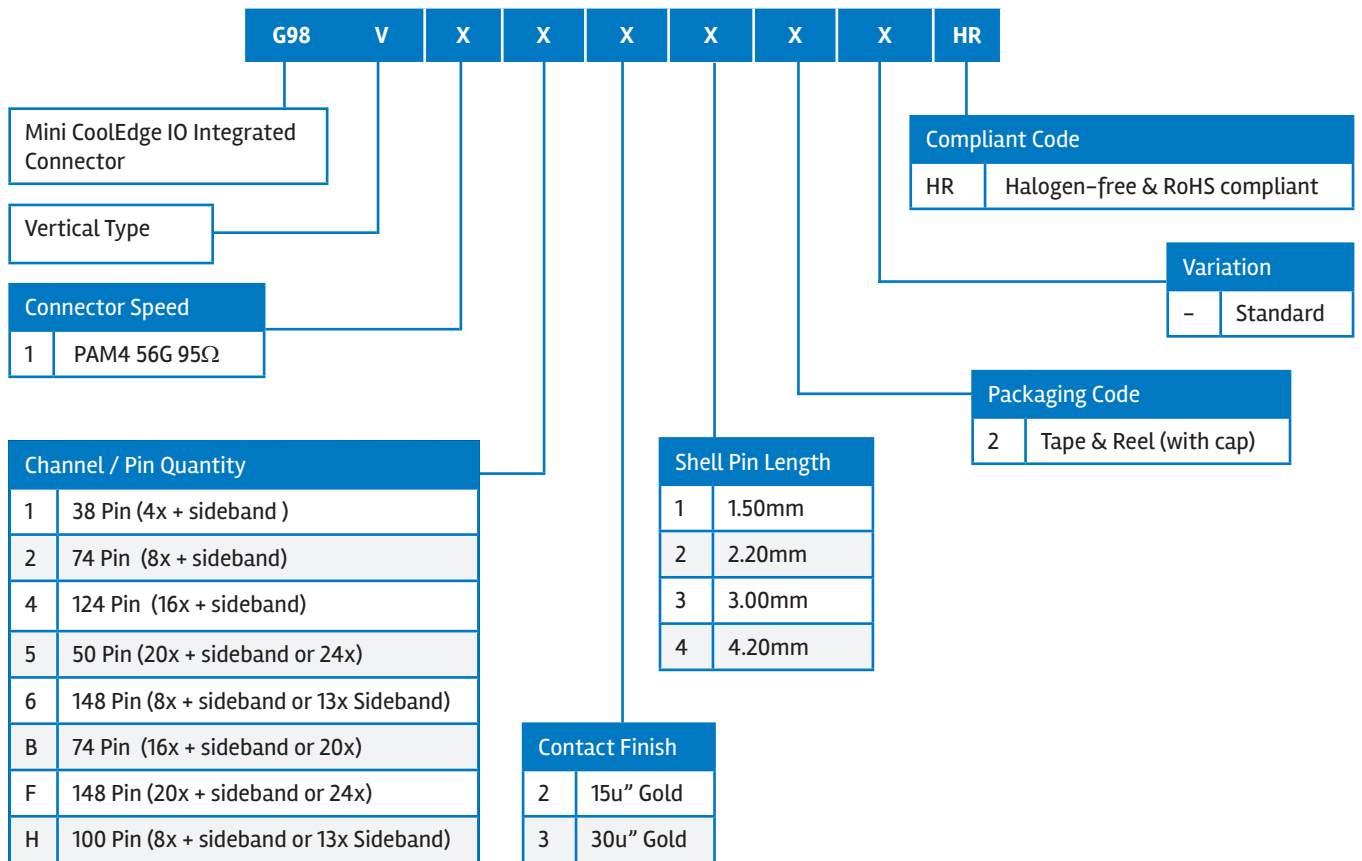
PART NUMBER SELECTOR



▶ Mini Cool Edge IO Connector



▶ Mini Cool Edge IO Connector



CM10MCI0082IEA4

X-ON Electronics

Largest Supplier of Electrical and Electronic Components

Click to view similar products for [PCI Express/PCI Connectors](#) category:

Click to view products by [Amphenol](#) manufacturer:

Other Similar products are found below :

[PCIEEXT16HOT](#) [UEX220-6U](#) [10025026-10003PLF](#) [10125756-980000LF](#) [GPCP442628110HR](#) [GPCP245400111HR](#) [10082378-10000TLF](#)
[MDT580M03001](#) [MPE-D-52-R-SMT-9.2-TR](#) [2041216-1](#) [MDT580M01001](#) [10141523-111T0LF](#) [10146070-112Y0LF](#) [10150657-052R0LF](#)
[1759513-1](#) [10082378-10213TLF](#) [10123920-A20LF](#) [10124928-001LF](#) [10125101-A15RLF](#) [10125101-A30RLF](#) [10125756-642010LF](#)
[10125756-A42010LF](#) [1612257-7](#) [1-1612257-2](#) [10125756-A40010LF](#) [10151114-001TLF](#) [SM3ZS067U215AMR1500](#) [10146070-113X0LF](#)
[MDT320M01004](#) [MDT580M01003](#) [10146070-123X0LF](#) [MDT420STD001](#) [10146070-113B0LF](#) [10146069112X0LF](#) [1-1734774-2](#) [63010](#)
[74540-0201](#) [74540-0501](#) [7-1734774-7](#) [3-1761465-1](#) [10039755-10111TLF](#) [10039755-10112TLF](#) [10018783-10211TLF](#) [10018784-10212TLF](#)
[1761465-2](#) [87715-9202](#) [87715-9208](#) [1871058-1](#) [5-1761465-4](#) [10018783-10200MLF](#)