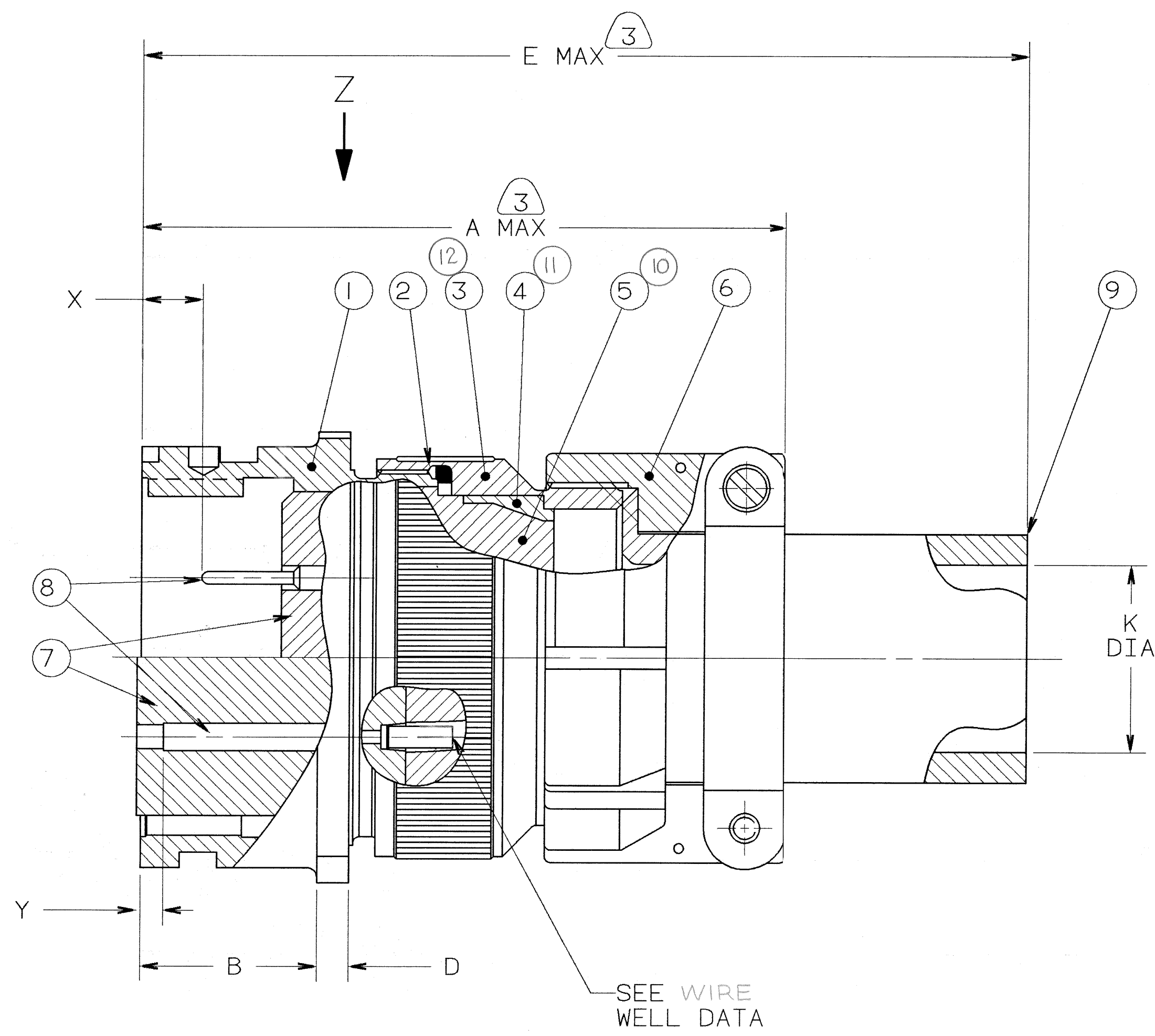
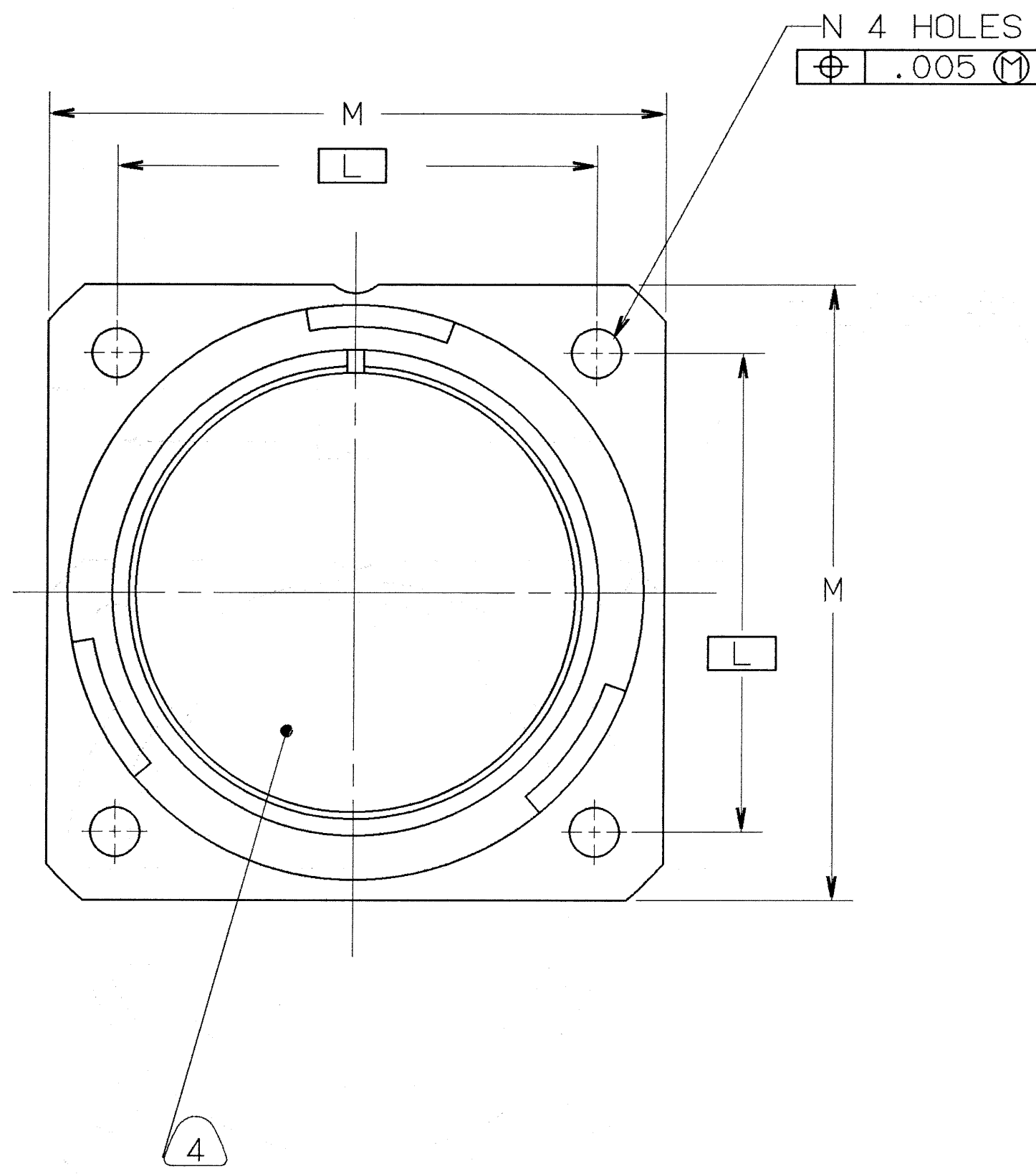


| CONTACT SIZE | SHELL SIZE | X | Y ±.040 |
|--------------|-----------------|--------------------------------|------------|
| 16 SHORT | 10SL, 14S, 16S | .087±.039 | .079 |
| 16 LONG | 14, 16, THRU 40 | .260 ⁺ .052 .041 | .102 |
| 12 | 14, 16, THRU 40 | .118 ⁺ .039 .056 | .102 |
| 4,8,0 | 14, 16, THRU 40 | .091±.039 | .102 |

| REVISIONS | | | | |
|-----------|-----|--------------------------------------|----------------------|----------|
| ZONE | LTR | DESCRIPTION | DATE | APPROVED |
| | A | INITIAL RELEASE NUM: 70091-140 | | |
| | B | (CL II) SEE ECN 27941 | 7-27-93 P. J. ... | |
| | C | (CL II) SEE CHG NOTICE ECN: 28357 | 6-9-94 Prescott | |



| FIND NO. | QTY RECD. | FSCM NO. | PART NUMBER | DESCRIPTION | NOTE REF. |
|----------|-------------|----------|---------------|-------------|-----------|
| 12 | 1 | | 10-581821-XX3 | ADAPTER | 3,14 |
| 11 | 1 | | 10-581819-XX1 | SLEEVE | 14 |
| 10 | 1 | | SEE COLUMN | GROMMET | 13,14 |
| 9 | 1 | | SEE COLUMN | SLEEVE | |
| 8 | SEE NOTE 10 | | | CONTACT | 3 |
| 7 | 1 | | 10-748XX-XXX | INSERT | |
| 6 | 1 | | SEE COLUMN | CLAMP ASSY | |
| 5 | 1 | | 10-607XX-XX | GROMMET | 15 |
| 4 | 1 | | 10-564869-XX | SLEEVE | 15 |
| 3 | 1 | | 10-564867-XX3 | ADAPTER | 15,3 |
| 2 | 1 | | 10-101379-XX1 | GASKET | 8 |
| 1 | 1 | | SEE COLUMN | SHELL | |

SEE SHEET 2
NOTES:

THE USE OF THIS DOCUMENT IS UNLIMITED. HOWEVER, DOCUMENTS REFERENCED HEREON MAY CONTAIN LIMITED RIGHTS DATA.

COMPANY ID: 2
 CODED/MS/CUST: Y
 INTERNAL: N
 LOTNO: N
 DATE CODE: 9-3895
 SEE PRINT: N

UNLESS OTHERWISE SPECIFIED
 LINEAR DIMENSIONS ARE IN INCHES.
 TOLERANCES: .XXX±.010,
 .XX ±.03, .X ±.1, ANGLES ±2°.
 OTHER STANDARDS PER 9-3800
 AND DOD-D-1000. NOTE REF= XX

| SPECIFICATIONS | | SIGNATURES | | DATES | |
|----------------|------------|--------------|---------------|---------|--|
| MATERIAL SPEC. | N/A | PREPARED | MCCELLIGOTT | 4/24/91 | |
| PROCESS SPEC. | SEE NOTE 5 | CHECKED | J. J. Miller | 4-22-91 | |
| | | APPROVED | [Signature] | 4-22-91 | |
| | | APPROVED | [Signature] | 5-3-91 | |
| | | 1ST PART NO. | 71-581453-215 | | |

| PARTS LIST | | | | | |
|---|----------|------|-----|---------------|--------------|
| AMPHENOL CORPORATION BENDIX CONNECTOR OPERATIONS SIDNEY, N.Y. | | | | | |
| CONNECTOR, ELECTRICAL RECEPTACLE, FRONT PANEL MOUNT, REVERSE BAYONET COUPLING, TYPE GTC030F-()-() | | | | | |
| SIZE | FSCM NO. | REV. | | | |
| D | 77820 | C | | | |
| SCALE | NONE | WT. | REF | 71-581580/599 | SHEET 1 OF 2 |

COMPUTER GENERATED DRAWING

00000001

TAB.

71-581440/459

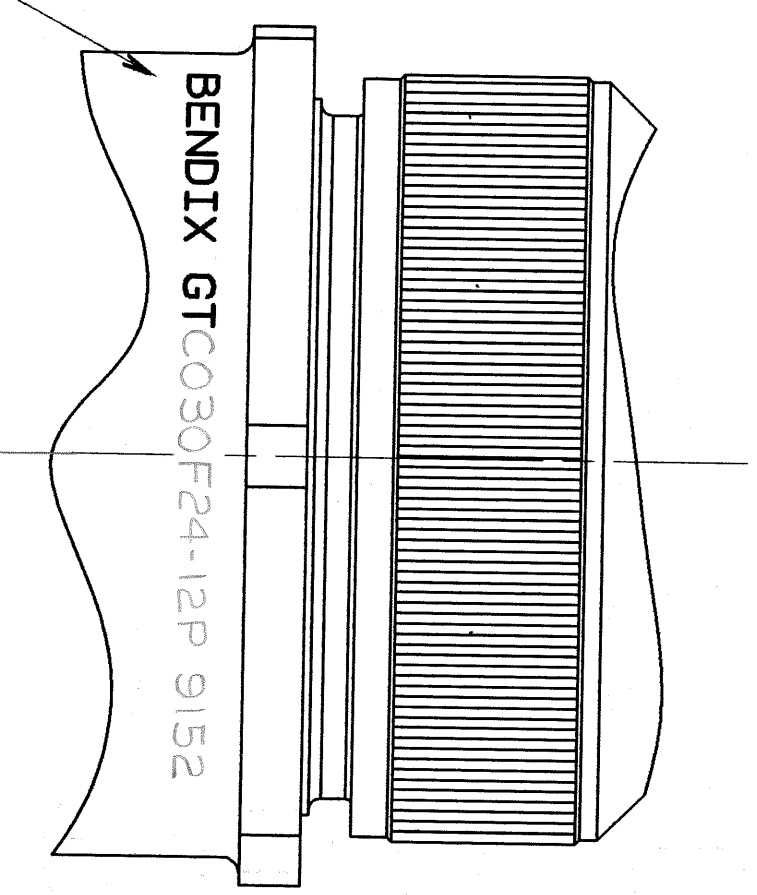
| ASSEMBLY NUMBER | SHELL SIZE | GT NUMBER | GROMMET PART NUMBER | SHELL | CLAMP ASSY | SLEEVE | 4 | | 3 | | | 2 | | 1 |
|-----------------|------------|----------------|---------------------|---------------|--------------|--------------|-------|---------------------|------------|-------|-------|------------|----------------------------|------|
| | | | | | | | A MAX | B +.016 -.000 | D ±.008 | E MAX | K MIN | M ±.012 | N DIA +.004 -.000 | |
| 71-581440-() | 8S | NOT AVAILABLE | | | | | | | | | | | | |
| 71-581441-() | 10S | NOT AVAILABLE | | | | | | | | | | | | |
| 71-581442-() | 10SL | GTC030F10SL-C) | 10-581825-() | 10-580713-113 | 10-824810- 4 | 10-824802- 4 | 2.520 | .717 | .110 | 4.878 | .218 | .717 | 1.000 | .126 |
| 71-581443-() | 12S | NOT AVAILABLE | | | | | | | | | | | | |
| 71-581444-() | 12 | NOT AVAILABLE | | | | | | | | | | | | |
| 71-581445-() | 14S | GTC030F14S-C) | 10-581827-() | 10-580713-143 | 10-824810- 7 | 10-824802- 6 | 2.598 | .717 | .126 | 4.878 | .310 | .906 | 1.181 | .126 |
| 71-581446-() | 14 | NOT AVAILABLE | | | | | | | | | | | | |
| 71-581447-() | 16S | GTC030F16S-C) | 10-581829-() | 10-580713-163 | 10-824810- 8 | 10-824802- 8 | 2.914 | .717 | .126 | 4.878 | .435 | .969 | 1.280 | .126 |
| 71-581448-() | 16 | GTC030F16-C) | 10-581830-() | 10-580713-173 | 10-824810- 8 | 10-824802- 8 | 2.854 | .846 | .126 | 5.019 | .435 | .969 | 1.280 | .126 |
| 71-581449-() | 18 | GTC030F18-C) | 10-581831-() | 10-580713-183 | 10-824810-10 | 10-824802-10 | 3.190 | .907 | | | | | | |
| 71-581450-() | 20 | GTC030F20-C) | 10-581832-() | 10-580713-203 | 10-824810-12 | 10-824802-12 | 3.190 | .907 | .157 | 5.080 | .560 | 1.063 | 1.378 | .126 |
| 71-581451-() | 22 | GTC030F22-C) | 10-581833-() | 10-580713-223 | 10-824810-12 | 10-824802-12 | 3.190 | .907 | | 5.080 | .623 | 1.157 | 1.496 | .126 |
| 71-581452-() | 24 | GTC030F24-C) | | | | | | | | 5.080 | .623 | 1.252 | 1.614 | .126 |
| 71-581453-() | 28 | GTC030F28-C) | 10-581834-() | 10-580713-243 | 10-824810-16 | 10-824802-16 | 3.442 | .907 | | 5.017 | .748 | 1.374 | 1.752 | .146 |
| 71-581454-() | 32 | GTC030F32-C) | 10-581835-() | 10-580713-283 | 10-824810-16 | 10-824802-16 | 3.482 | .947 | | 5.057 | .748 | 1.563 | 2.000 | .146 |
| 71-581455-() | 36 | GTC030F36-C) | 10-581837-() | 10-580713-323 | 10-824810-20 | 10-824802-20 | 3.419 | .947 | | 4.994 | .935 | 1.752 | 2.244 | .169 |
| 71-581456-() | 40 | GTC030F40-C) | NOT AVAILABLE | 10-580713-363 | 10-824810-24 | 10-824802-24 | 4.206 | .947 | | 5.388 | 1.248 | 1.937 | 2.500 | .169 |
| 71-581457/459 | | NOT AVAILABLE | | | | | | | | | | | | |

TO COMPLETE, ADD APPLICABLE INSERT ARRANGEMENT SUFFIX PER 9-2437

SEE NOTE 13

| WIRE WELL DATA | | | | | |
|----------------|----------------|--------------------|--------------------|--------------------|--------------------|
| CONTACT SIZE | 0 | 4 | 8 | 12 | 16 |
| WELL DIA | .453±.005 | .281+.005 -.004 | .179+.004 -.002 | .098+.004 -.001 | .063+.004 -.001 |
| WELL DEPTH | +.031 -.000 | .592 | .500 | .500 | .250 |

BLACK INK STAMP PER 9-3856-5 "BENDIX", GT NUMBER (SEE COLUMN) & DATE CODE (9-3895). CHARACTERS TO BE .094-.125 HIGH. AND LOCATED APPROX AS SHOWN
EXAMPLE:
BENDIX GTC030F24-12P 9152



VIEW AT Z

1. UNITS MEET THE APPLICABLE REQUIREMENTS OF MIL-C-5015.
2. FOR CONTACT SIZE, SPACING & SERVICE RATING, SEE MIL-STD-1651 OR L-11908-()/L-11948-().
3. DRAWING ILLUSTRATES FINAL ASSEMBLY. FOR STORAGE & SHIPPING, ADAPTER, CLAMP AND SLEEVE MUST BE LOOSELY COUPLED.
4. INSERTS ARE NOT REMOVABLE.
5. PROCESS SPEC:
ASSY 9-9238
TEST 9-3106-18
9-3856-5, 9-3895, 9-2437, 9-1936
6. SEE WORK ORDER FOR PERMISSIBLE ADDITIONAL OR ALTERNATE STAMPING.
7. FOR MATING CONNECTOR ASSEMBLIES, SEE 71-580450/469 & OTHERS.
8. APPLY A LIGHT FILM OF LUBRICANT 9-1936 TO GASKET.
9. SEE SEPARATE PARTS LIST FOR COMPONENT PART NUMBERS AND QUANTITIES.
10. PACKAGE PER PRODUCTION PROCESS SHEET.
11. FOR FINAL INSTALLATION, CONTACTS MUST BE ASSEMBLED INTO ALL INSERT HOLES. ALL UNUSED GROMMET HOLES MUST BE FILLED WITH THE APPROPRIATE SIZE SEALING PLUG.
12. CONTACTS ARE SHIPPED UNASSEMBLED.
13. TO COMPLETE INDICATED GROMMET PART NO. ADD APPLICABLE ARRANGEMENT SUFFIX.
14. INDICATED ITEMS, (F/N'S 10, 11 & 12) ARE APPLICABLE TO CONNECTORS CONTAINING CONTACT ARRANGEMENTS WITH SIZE 4 & 8 SIZE CONTACTS.
15. INDICATED ITEMS, (F/N'S 3, 4 & 5) ARE APPLICABLE TO CONNECTORS CONTAINING CONTACT ARRANGEMENTS OTHER THAN THOSE SPECIFIED IN NOTE 14.

NOTES:

THE USE OF THIS DOCUMENT IS UNLIMITED. HOWEVER, DOCUMENTS REFERENCED HEREON MAY CONTAIN LIMITED RIGHTS DATA.

X-ON Electronics

Largest Supplier of Electrical and Electronic Components

Click to view similar products for [Circular MIL Spec Connector](#) category:

Click to view products by [Amphenol](#) manufacturer:

Other Similar products are found below :

[89075GULPR](#) [0025-262-542](#) [0025-264-3014](#) [58-570121-04S](#) [0134-213-1208](#) [0134-213-2209](#) [0025-258-000](#) [60-042022-07P](#) [60-042022-19P](#)
[60-042022-23P](#) [60-042217-10P](#) [0114-201-1278](#) [012-0467-000](#) [602GB06EG24-61SN](#) [0134-201-1207](#) [0134-213-1006](#) [6104-207-2302](#) [6104-](#)
[208-1902](#) [61-168211-04P](#) [61-168617-10P](#) [6131-202-19149P](#) [6131-204-21149P](#) [6131-208-13149P](#) [6131-209-17149P](#) [6131-210-11149P](#) [6131-](#)
[211-19149P](#) [6131-216-19149P](#) [6131-259-21149P](#) [6131-259-23149P](#) [6131-265-17149P](#) [6131-265-19149P](#) [CS3100A18-1P-472](#) [CS3100A-36-](#)
[77P](#) [CS3101A-16-55P](#) [CS3102A-10SL-55P](#) [CS3102A-14S-58P](#) [CS3102A-32-17P](#) [CS3102A32-25S](#) [CS3102C18-4P-472](#)
[CS3106A10SL3S004](#) [CS3106A-18-73S](#) [CS3108A-14S-52S](#) [CS3108A-28-51S](#) [6162-233-1277](#) [6162-324-1231](#) [M243082296Z](#)
[M2884010AC1S1](#) [CT0-24-10SC](#) [CT0M20-7PCAU](#) [M28840/17AC1G3](#)