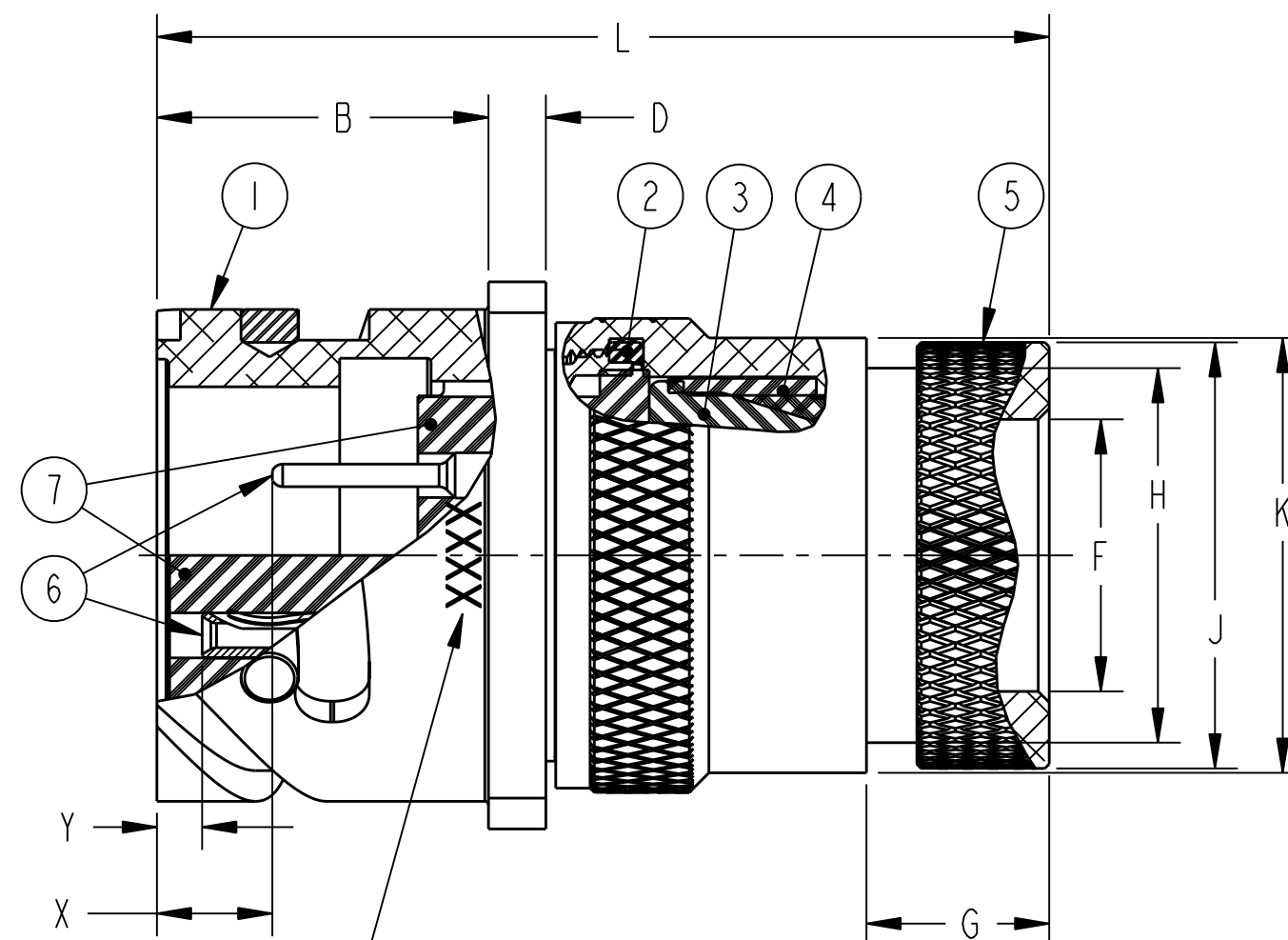
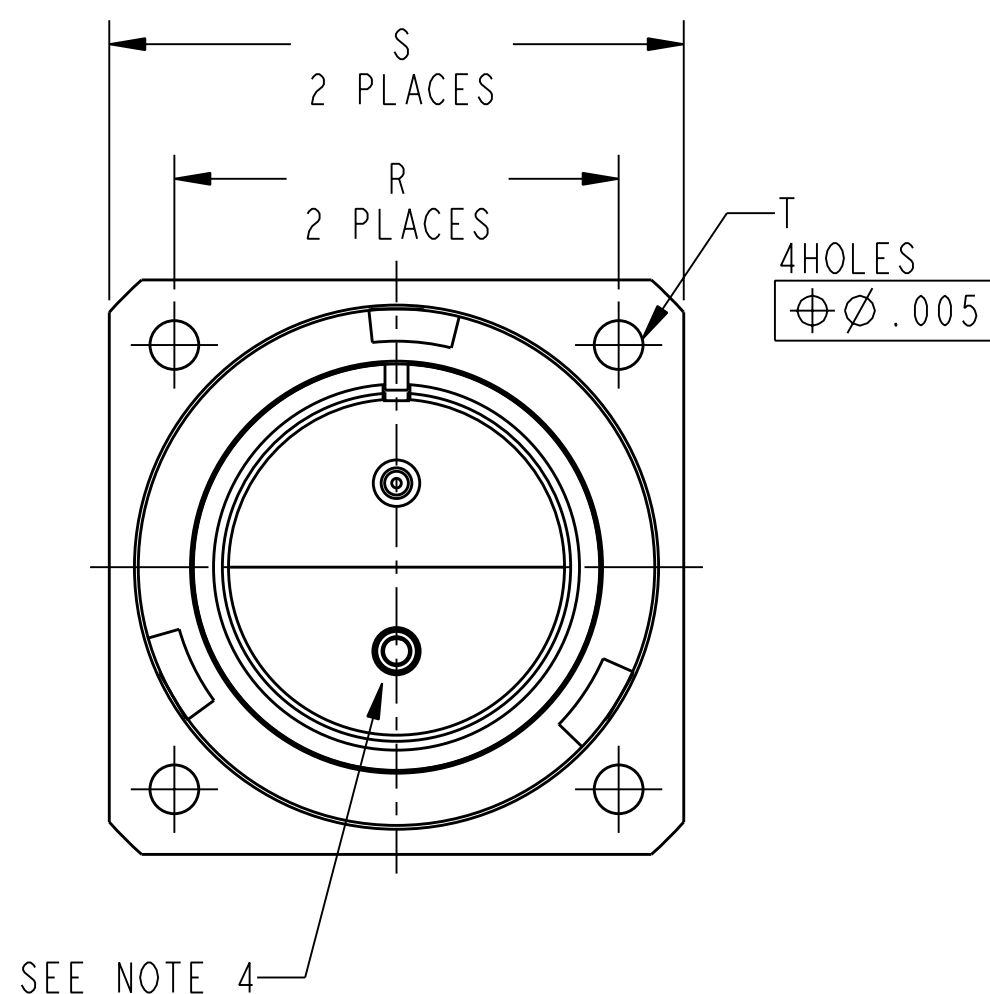
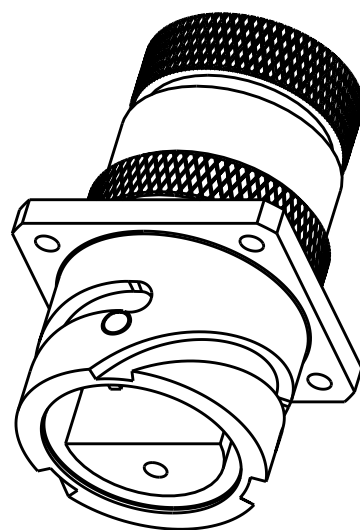


REV. A		SHEET 1 OF 2		DOCUMENT NO. 71-586060/079	
REVISIONS					
LTR	DESCRIPTION		DATE		
A	INITIAL RELEASE				

INTERFACE REQUIREMENTS			
CONTACT SIZE	SHELL SIZE	X	Y ±.040
16 SHORT	10SL, 14S, 16S	.087±.039	.079
16 LONG	16 THRU 40	.260 <sup>+.052</sup> -.041	.102
12	16 THRU 40	.118 <sup>+.039</sup> -.056	.102
0, 4, 8	16 THRU 40	.091±.039	.102



BLACK INK STAMP "AMPHENOL", GT NUMBER, SEE COLUMN, AND DATE CODE, (9-3895), APPROX .125 HIGH, IN APPROX LOCATION SHOWN PER 9-3856-5.  
EXAMPLE:  
AMPHENOL GTC030G20-33P 0452

POS	QTY	PART NUMBER	DESCRIPTION	NOTE
7	1	10-748XX-( )	INSERT	
6		SEE NOTE 8	CONTACT	
5	1	10-564846-XX3	ADAPTER	
4	1	10-564869-XX	SLEEVE, COMPRESSION	
3	1	10-607XX-( )	GROMMET	
2	1	10-101379-XX1	GASKET	
1	1	SEE COLUMN	SHELL	

UNLESS OTHERWISE SPECIFIED	SPECIFICATIONS
LINEAR DIMENSIONS ARE IN INCHES TOLERANCES: .XXXX = ±.0005 ANGLES= ±2° .XXX = ±.010 .XX = ±.03 .X = ±.1	MATERIAL SPEC. N/A
DIM. & TOL. PER ASME Y14.5M; DRM PER MIL-DTL-31000; OTHER Amphenol Sds. PER 9-3800	PROCESS SPEC. SEE NOTE 5
LEGENDS: = FLAG NOTE CALL OUT REFERENCE ONLY	

APPROVALS		DATE
PREPARED BY A. Prescott		12-Aug-04
ENGINEER IN CHARGE R. Barnes		
DESIGN MANAGER D. Gallusser		
DESIGN ACTIVITY GROUP C & I		
THIRD ANGLE PROJECTION		

PARTS LIST			
<b>AMPHENOL CORPORATION</b> 40-60 DELAWARE AVENUE SIDNEY, N.Y. 13858			
<b>CONNECTOR, ELECTRICAL RECEPTACLE, TYPE GTC030G-( ), OLIVE DRAB CADMIUM PLATED</b>			
SIZE <b>C</b>	CAGE CODE <b>77820</b>	DOCUMENT NO. <b>71-586060/079</b>	REV. <b>A</b>
SCALE: 2.0		REF: 71-621380/399	SHEET 1 OF 2

SEE SHEET 2

NOTES:

THE USE OF THIS DOCUMENT IS UNLIMITED. HOWEVER, DOCUMENTS REFERENCED HEREON MAY CONTAIN LIMITED RIGHTS DATA.

RELEASED / Aug . 18 2004, 11:49 AM

PRO/ENGINEER INFORMATION	
N/A	Pro/e Model Used:
N/A	GTC030G.ASSEM
NEXT ASSEMBLY	Drawing Name:
	71-586060.079

71-586060/079

SHEET 1 OF 2

REV. A

C

B

A

FORMAT: C-U-L-R-REV-B

D

C

REV. A

SHEET 1 OF 2

71-586060/079

A

U

4

3

2

ASSEMBLY NUMBER	SIZE	GT NUMBER	SHELL	B ±.008	D ±.008	F DIA MIN	G ±.020	H DIA MAX	J DIA ±.008	K DIA ±.008	L MAX	R	S ±.012	T DIA ±.002
71-586060-()	8S	NOT AVAILABLE												
71-586061-()	10S	NOT AVAILABLE												
71-586062-()	10SL	GTC030G10SL-()	10-580713-113	.725	.110	.303	.461	.524	.610	.669	1.969	.717	1.000	.128
71-586063-()	12S	NOT AVAILABLE												
71-586064-()	12	NOT AVAILABLE												
71-586065-()	14S	GTC030G14S-()	10-580713-143	.725	.126	.417	.461	.669	.752	.791	1.969	.906	1.181	.128
71-586066-()	14	NOT AVAILABLE												
71-586067-()	16S	GTC030G16S-()	10-580713-163	.725	.126	.531	.461	.862	.941	.923	1.969	.969	1.280	.128
71-586068-()	16	GTC030G16-()	10-580713-173	.854	.126	.531	.453	.862	.941	.923	2.362	.969	1.280	.128
71-586069-()	18	GTC030G18-()	10-580713-183	.915	.157	.637	.453	.862	.941	1.043	2.362	1.063	1.378	.128
71-586070-()	20	GTC030G20-()	10-580713-203	.915	.157	.736	.500	1.031	1.165	1.189	2.559	1.157	1.496	.128
71-586071-()	22	GTC030G22-()	10-580713-223	.915	.157	.877	.500	1.031	1.165	1.323	2.559	1.252	1.614	.128
71-586072-()	24	GTC030G24-()	10-580713-243	.915	.157	.969	.500	1.358	1.488	1.421	2.559	1.374	1.752	.148
71-586073-()	28	GTC030G28-()	10-580713-283	.955	.157	1.094	.500	1.358	1.488	1.630	2.559	1.563	2.000	.148
71-586074-()	32	GTC030G32-()	10-580713-323	.955	.157	1.392	.598	1.717	1.882	1.913	2.756	1.752	2.244	.171
71-586075-()	36	GTC030G36-()	10-580713-363	.955	.157	1.539	.598	1.717	1.882	2.157	3.150	1.937	2.500	.171
71-586076-()	40	GTC030G40-()	10-580713-403	.955	.157	1.898	.610	2.071	2.276	2.402	3.150	2.185	2.752	.171
71-586077/79		NOT AVAILABLE												

TO COMPLETE, ADD APPLIACLE INSERT ARRANGEMENT SUFFIX PER 9-2437.

- 7. FOR MATING CONNECTOR ASSEMBLES, SEE 71-580450/469 AND OTHERS.
- 6. SEE WORK ORDER FOR PERMISSIBLE ADDITIONAL OR ALTERNATE STAMPING.
- 5. PROCESS SPEC:  
 ASSY 9-9238  
 TEST 9-3106-18  
 9-3856-5, 9-3895, 9-2437, 9-1936
- 4. INSERTS ARE NOT REMOVABLE.
- 3. DRAWING ILLUSTRATES FINAL ASSEMBLY.
- 2. FOR CONTACT SIZE, SPACING AND SERVICE RATING, SEE MIL-STD-1651 OR L-11908/48-().
- 1. UNIT MEETS THE APPLICABLE REQUIREMENTS OF MIL-C-5015.

- 10. APPLY A LIGHT FILM OF LUBE 9-1936 TO GASKET.
- 9. PACKAGE PER PRODUCTION PROCESS SHEET.
- 8. SEE SEPARATE PARTS LIST FOR COMPONENT PART NUMBERS AND QUANTITIES.

NOTES:  
 THE USE OF THIS DOCUMENT IS UNLIMITED. HOWEVER, DOCUMENTS REFERENCED HEREON MAY CONTAIN LIMITED RIGHTS DATA.

RELEASED / Aug . 18 2004, 11:49 AM

SIZE <b>C</b>	CAGE CODE <b>77820</b>	DOCUMENT NO. <b>71-586060/079</b>	REV. <b>A</b>
SCALE: 2.0		REF. 71-621380/399	SHEET 2 OF 2

3

2

1

71-586060/079 SHEET 2 OF 2 REV. A

71-586060/079 SHEET 2 OF 2 REV. A

## X-ON Electronics

Largest Supplier of Electrical and Electronic Components

*Click to view similar products for [Circular MIL Spec Connector](#) category:*

*Click to view products by [Amphenol](#) manufacturer:*

Other Similar products are found below :

[89075GULPR](#) [0025-262-542](#) [0025-264-3014](#) [58-570121-04S](#) [0134-213-1208](#) [0134-213-2209](#) [0025-258-000](#) [60-042022-07P](#) [60-042022-19P](#)  
[60-042022-23P](#) [60-042217-10P](#) [0114-201-1278](#) [012-0467-000](#) [602GB06EG24-61SN](#) [0134-201-1207](#) [0134-213-1006](#) [6104-207-2302](#) [6104-](#)  
[208-1902](#) [61-168211-04P](#) [61-168617-10P](#) [6131-202-19149P](#) [6131-204-21149P](#) [6131-208-13149P](#) [6131-209-17149P](#) [6131-210-11149P](#) [6131-](#)  
[211-19149P](#) [6131-216-19149P](#) [6131-259-21149P](#) [6131-259-23149P](#) [6131-265-17149P](#) [6131-265-19149P](#) [CS3100A18-1P-472](#) [CS3100A-36-](#)  
[77P](#) [CS3101A-16-55P](#) [CS3102A-10SL-55P](#) [CS3102A-14S-58P](#) [CS3102A-32-17P](#) [CS3102A32-25S](#) [CS3102C18-4P-472](#)  
[CS3106A10SL3S004](#) [CS3106A-18-73S](#) [CS3108A-14S-52S](#) [CS3108A-28-51S](#) [6162-233-1277](#) [6162-324-1231](#) [M243082296Z](#)  
[M2884010AC1S1](#) [CT0-24-10SC](#) [CT0M20-7PCAU](#) [M28840/17AC1G3](#)