

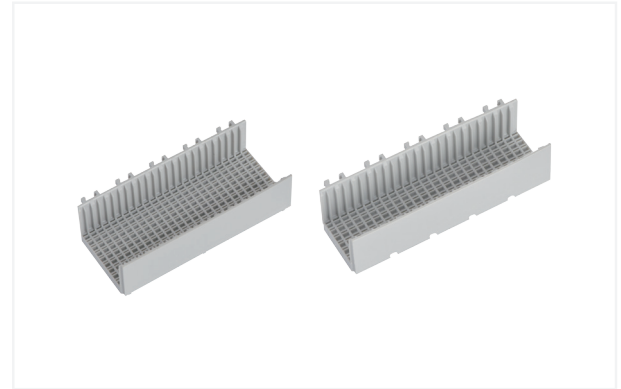
# MILLIPACS® 2mm HARD METRIC SERIES– ACCESSORIES

## OVERVIEW

FCI offers a wide range of accessories compatible with 2mm Hard Metric (HM) series Millipacs® connectors. Millipacs® series accessories increase the usability and flexibility of the connector systems.

## SHROUDS

FCI offers 5 row and 8 row, Board-To-Board and Cable-To-Board shrouds of all types. Shrouds with cable latch lock feature are also available.



## FEATURES

- Shroud retention by forced-fitting with the long tails of vertical headers/ receptacles for RPU applications
- Optional latch lock
- Integrated multipurpose center for polarization, guiding and coding
- Stand-off for different shroud heights

## BENEFITS

- No mounting hardware
- Mating compatibility with cable connectors for I/O applications
- Easy guiding and visual identification. Prevents wrong mating
- Flexibility on backplane thickness



## PART NUMBERS

No. of rows	Type	Features	Shroud series
5	A	22 column, 50mm + MPC	HM2H07P1
	A	22 column, 50mm + reversed MPC	HM2H07P2
	A	12 column, 30mm + MPC	HM2H51P1
	B	25 column, 50mm	HM2H08P1
	B	25 column, 50mm + locking latch	HM2H05P1
	B22	22 column, 44mm	HM2H70P1
	B19	19 column, 38mm	HM2H71P1
	B	6 column, 12mm	HM2H42P1
	B	6 column, 12mm + locking latch	HM2H41P1
	B	5 column, 10mm	HM2H06P1
	B	5 column, 10mm + locking latch	HM2H02P1
	AB	25 column, 50mm	HM2H65P1
	AB22	22 column, 44mm	HM2H66P1
	AB19	19 column, 38mm	HM2H67P1
	C	11 column, 25mm	HM2H09P1
	CR	11 column, 25mm + reversed	HM2H80P1
	CR	11 column + reversed pegs	HM2H80P2
8	D	22 column, 50mm	HM2H87P1
	DE	25 column, 50mm	HM2H95P1
	E	25 column, 50mm	HM2H88P1
	E	25 column, 50mm + locking latch	HM2H81P1
	F	11 column, 25mm	HM2H89P1
	FR	11 column, 25mm	HM2H82P1

## GUIDING SYSTEMS

FCI offers guiding pins and mating right angle sockets suitable for standard Hardmetric configurations. HM2G series guiding pins can be integrated to the connector system or as a standalone.



### FEATURES

- Early capture of Daughter Card
- Stand-alone system

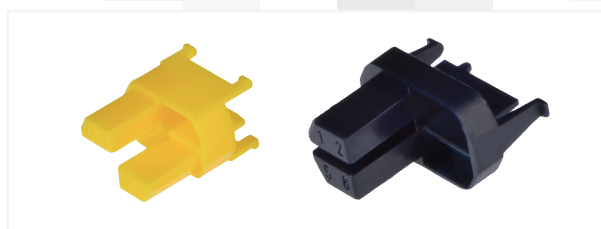
### BENEFITS

- Helps in aligning the connectors while mating and prevents damage to contact pins and connector housings
- Can be used at any location within a connector configuration

#### Disclaimer

## CODING KEYS

Coding keys prevent the incorrect insertion of cards in to system. They are clicked in to the multipurpose center of Header and receptacle connectors. Each coding key has a different bright and pre-defined color in order to make visual identification and differentiation easy.



### FEATURES

- Polarization
- Well defined colors

PN Series	Color
HM2DK3456-	Cadmium yellow
HM2DK1567-	Brilliant blue
HM2DK1456-	Pastel green

### BENEFITS

- Prevents incorrect insertion of PCBs and daughter cards
- Easy identification

PN Series	Color
HM2DK1247-	Pure orange
HM2DK2346-	Purple Red

## POWER CONTACTS

FCI offers wide variety of contact styles for crimp, dip , hand-solder or press-fit connections. FCI offers header contacts under PN 'RM' series and mating receptacle contacts under PN "RC' series.



### FEATURES

- High precision contacts
- Outer retention locking spring

### BENEFITS

- Maximize durability performance
- Adequate locking and positioning of contacts to connector housing

### TARGET MARKETS/APPLICATIONS

- Communications
  - IP, Internet backbone driving high bandwidth requirements
  - LAN / WAN interfaces & data over public networks
  - Core Switches
  - Routers
  - Hubs
  - Base Station
  - Wireless Base Station
  - Transmission Access Systems
- Data
  - Servers
  - Storage units
- Industrial & Instrumentation
  - Data Acquisition systems for Test & Measurements
- Railway Traffic Management & Control Systems
- Control Systems for Process
- Energy & Power Industries
- In-flight Entertainment & Communication for Avionics
- Digital Image Processing
- Multimedia
- Signage
- Video Surveillance
- Radar
- Sonar System
- UAV
- Medical
  - MRI Scanners
  - Diagnostic Equipment

## X-ON Electronics

Largest Supplier of Electrical and Electronic Components

*Click to view similar products for [Hard Metric Connectors](#) category:*

*Click to view products by [Amphenol](#) manufacturer:*

Other Similar products are found below :

[6345127-1](#) [646916-9](#) [6469658-1](#) [973108](#) [1-2000713-0](#) [1-2000713-2](#) [1-2000713-3](#) [120646-1](#) [1645343-1](#) [1645456-1](#) [1645594-1](#) [1645595-1](#)  
[1645601-1](#) [1934822-1](#) [278071110010833](#) [1645179-1](#) [1645245-1](#) [1645457-1](#) [1645525-1](#) [1645570-1](#) [1645596-1](#) [17041102202](#) [17-8072-125-](#)  
[000-863+](#) [1857470-1](#) [1934275-1](#) [1934289-1](#) [1934759-1](#) [2000673-1](#) [2170292-2](#) [2-536642-6](#) [3-106015-1](#) [352188-1](#) [352629-1](#) [3-646529-0](#)  
[5120823-1](#) [5120899-1](#) [3-100145-0](#) [3-100147-0](#) [3-100669-1](#) [3-106081-0](#) [HM2DK2368PLF](#) [5646530-1](#) [3-352049-0](#) [3-352069-0](#) [3-352115-0](#)  
[3-352638-0](#) [352189-1](#) [3-646357-0](#) [3-646487-0](#) [3-646513-0](#)