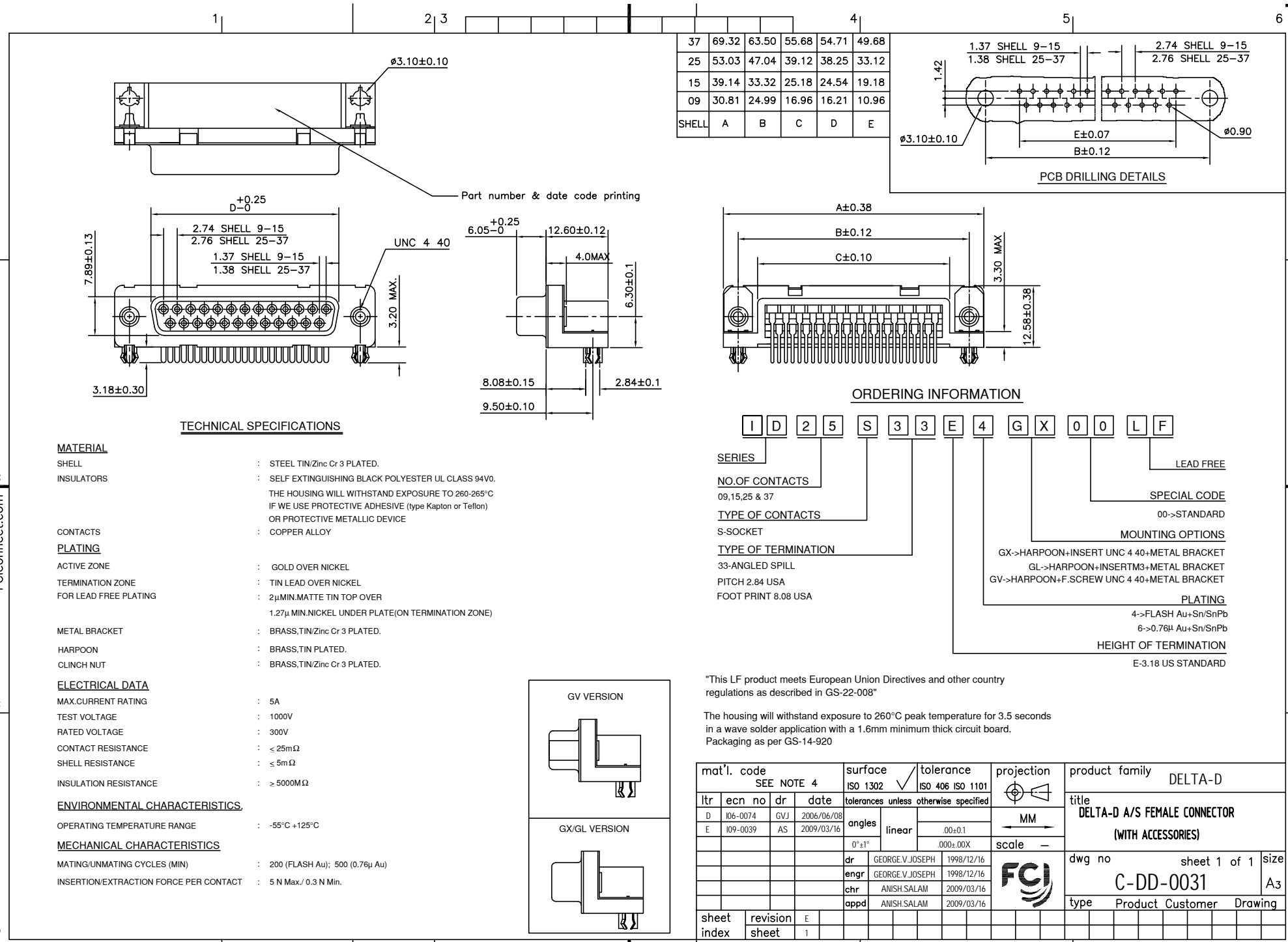


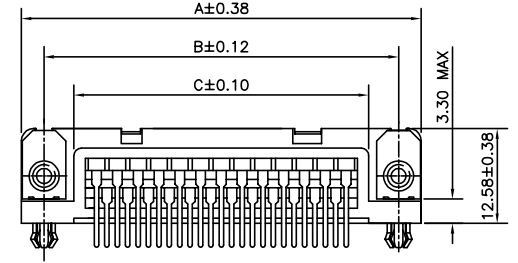
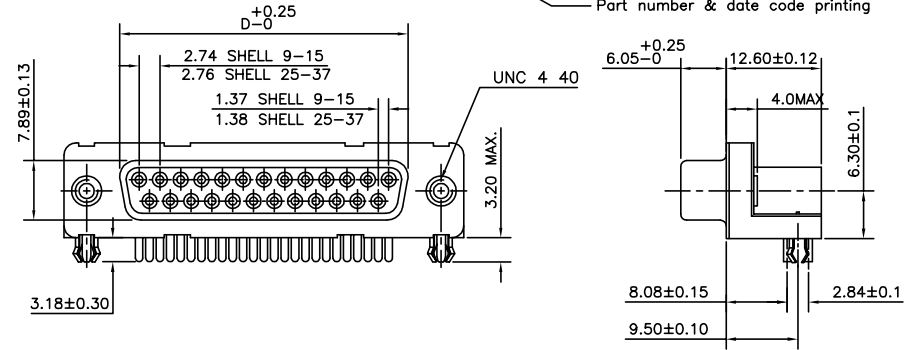
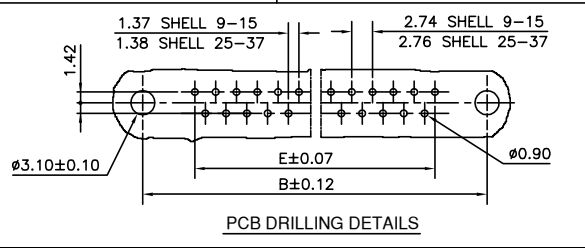


FCIconnect.com

Copyright FCI



37	69.32	63.50	55.68	54.71	49.68
25	53.03	47.04	39.12	38.25	33.12
15	39.14	33.32	25.18	24.54	19.18
09	30.81	24.99	16.96	16.21	10.96
SHELL	A	B	C	D	E



TECHNICAL SPECIFICATIONS

MATERIAL

SHELL : STEEL TIN/Zinc Cr 3 PLATED.

INSULATORS : SELF EXTINGUISHING BLACK POLYESTER UL CLASS 94V0.
THE HOUSING WILL WITHSTAND EXPOSURE TO 260-265°C
IF WE USE PROTECTIVE ADHESIVE (Type Kapton or Teflon)
OR PROTECTIVE METALLIC DEVICE

CONTACTS : COPPER ALLOY

PLATING

ACTIVE ZONE : GOLD OVER NICKEL

TERMINATION ZONE : TIN LEAD OVER NICKEL

FOR LEAD FREE PLATING : 2µMIN.MATTE TIN TOP OVER
1.27µ MIN.NICKEL UNDER PLATE(ON TERMINATION ZONE)

METAL BRACKET : BRASS,TIN/Zinc Cr 3 PLATED.

HARPOON : BRASS,TIN PLATED.

CLINCH NUT : BRASS,TIN/Zinc Cr 3 PLATED.

ELECTRICAL DATA

MAX.CURRENT RATING : 5A

TEST VOLTAGE : 1000V

RATED VOLTAGE : 300V

CONTACT RESISTANCE : ≤ 25mΩ

SHELL RESISTANCE : ≤ 5mΩ

INSULATION RESISTANCE : ≥ 5000MΩ

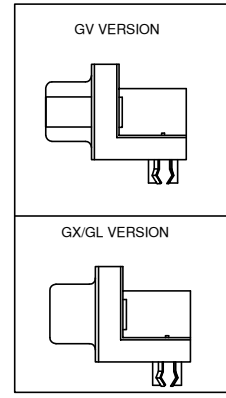
ENVIRONMENTAL CHARACTERISTICS.

OPERATING TEMPERATURE RANGE : -55°C +125°C

MECHANICAL CHARACTERISTICS

MATING/UNMATING CYCLES (MIN) : 200 (FLASH Au); 500 (0.76µ Au)

INSERTION/EXTRACTION FORCE PER CONTACT : 5 N Max./ 0.3 N Min.



ORDERING INFORMATION

Series: I D 2 5 S 3 3 E 4 G X 0 0 L F

NO. OF CONTACTS : 09,15,25 & 37

TYPE OF CONTACTS : S-SOCKET

TYPE OF TERMINATION : 33-ANGLED SPILL

PITCH : 2.84 USA

FOOT PRINT : 8.08 USA

LEAD FREE

SPECIAL CODE : 00->STANDARD

MOUNTING OPTIONS : GX->HARPOON+INSERT UNC 4 40+METAL BRACKET
GL->HARPOON+INSERTM3+METAL BRACKET
GV->HARPOON+F.SCREW UNC 4 40+METAL BRACKET

PLATING : 4->FLASH Au+Sn/SnPb
6->0.76µ Au+Sn/SnPb

HEIGHT OF TERMINATION : E-3.18 US STANDARD

"This LF product meets European Union Directives and other country regulations as described in GS-22-008"

The housing will withstand exposure to 260°C peak temperature for 3.5 seconds in a wave solder application with a 1.6mm minimum thick circuit board. Packaging as per GS-14-920

mat'l. code		surface		tolerance		projection		product family	
SEE NOTE 4		ISO 1302		ISO 406 ISO 1101				DELTA-D	
ltr	ecn no	dr	date	tolerances unless otherwise specified				title	
D	106-0074	GVJ	2006/06/08	angles	linear	MM		DELTA-D A/S FEMALE CONNECTOR	
E	109-0039	AS	2009/03/16			scale -		(WITH ACCESSORIES)	
		dr	GEORGE.V.JOSEPH	1998/12/16				dwg no	
		enrg	GEORGE.V.JOSEPH	1998/12/16				sheet 1 of 1	
		chr	ANISH.SALAM	2009/03/16				size	
		appd	ANISH.SALAM	2009/03/16				A3	
sheet index		revision sheet	E 1					type Product Customer Drawing	

X-ON Electronics

Largest Supplier of Electrical and Electronic Components

Click to view similar products for [D-Sub Standard Connectors](#) category:

Click to view products by [Amphenol](#) manufacturer:

Other Similar products are found below :

[56F706-005-LI](#) [56F711-015](#) [012-9507-004](#) [LV242999-142T12](#) [015-0341-000](#) [015-0372-005](#) [015-0372-008](#) [015-8755-001](#) [020419-0104](#)
[012-0467-000](#) [012-9507-034](#) [012-9507-114](#) [020745-0008](#) [609-25P](#) [CT2-18-11PCAU](#) [CT6-10SL-3SC](#) [CT6-10SL-4SC](#) [CT6-14S-2SC](#)
[CT6E14SA7SC](#) [CT6N10SL-4SSA34](#) [M83513/01-FC](#) [M83723/76W24619 L/C](#) [M85049/48-3-2F](#) [6STD09PCM99B70X](#) [6STD09SCM99B30X](#)
[6STD09SCT99S40X](#) [6STD15PCT99S40X](#) [6STD15SCT99S40X](#) [6STF09PCM05B70X](#) [7-135760-9](#) [MC11E-10-6SN](#) [747552-3](#) [MD1-21PS](#)
[MDM-15SCBRM7-F222](#) [MDM96517-699](#) [MDM96521-744](#) [MDVB1-21SL1](#) [MIK0-1-7SH003](#) [MIKQ6-7SH076](#) [MIKQ7-7PH077](#) [MIKQ7-](#)
[7PH11](#) [MIKQ7-7PH32](#) [MJSV-28SL61](#) [MKJ4A1F14-55S](#) [8-135760-3](#) [8STD09PCM99B30X](#) [PG-KV/PV-16-GROM-SEALING](#) [GDA15P](#)
[GDAY15PB](#) [980-0000-170](#)