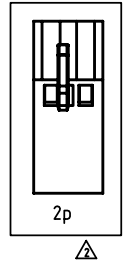


SIGN	DATE	DESCRIPTION	APPROVER
△	10/27/09	Dim.A and Dim.B tolerance table changed.	Kind
△	2010.03.31	Add the 2p mark	Jacke
THIS IS CAD DRAWING, DO NOT REVISE MANUALLY!!!			



Material:

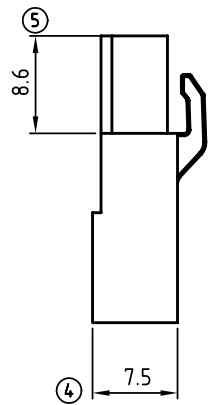
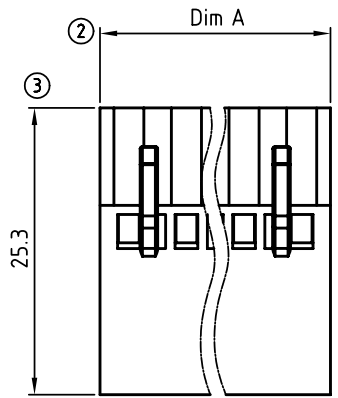
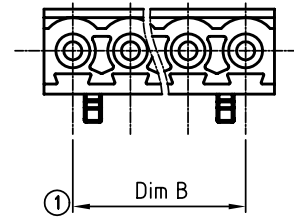
- Item a :Terminal housing:Thermoplastic (UL94 V-0)

Electrical (Match with A0 series)

- Voltage rating: 300V
- Current rating: 10A
- Wire range: 0.5-1.0mm²/1.5-2.5mm²
- Withstanding Voltage: 1.6KV

KI xx 50 x 0 xxxx G

- No. OF POLES: 02 2 CONTACTS, 03 3 CONTACTS,, 24 24 CONTACTS
- Color: 0 Black (RAL9005), 2 Red (RAL3001/D), 3 Orange(RAL2011/P), 4 Yellow(RAL1018/A), 5 Green(RAL6018/T), 6 Blue (RAL5015/A), 8 Grey(RAL7035/D)
- G: Pb<40000ppm
- 0000: "@ " Logo (Standard)
- 000A: "ANYTEK" Mark
- Any special item by customer request. please contact sales department.



N = Number of poles
 Dim A=Nx5.08
 Dim B=(N-1)x5.08

Dim. Poles	Dim A	Dim B
2-6p	±0.20	±0.20
7-12p	±0.25	±0.25
13-16p	±0.30	±0.30
17-24p	±0.40	±0.35

ANYTEK				CUSTOMER COPY					
ALL RIGHTS RESERVED. REPRODUCTION OR ISSUE TO THIRD PARTIES IN ANY FORM WHATSOEVER IS NOT PERMITTED WITHOUT WRITTEN AUTHORITY FROM THE PROPRIETOR. PROPERTY OF ANYTEK TECHNOLOGY CO., LTD									
TITLE		KI 5.08 SERIES (W/o flange)				DWG NO.		8KI0101	
PART NO.		KIxx50x0xxxxG				DWG NO.		8KI0101	
APPROVED		CHECKED		DESIGNED		DRAWN		CUST NO.	
				Jacke		Jacke			
				2010.03.31		2010.03.31			
						UNIT: mm		X. ±0.50	
						SCALE: 2/1		X.X ±0.30	
				SHEET: 01/01		REV.: D		X.XX ±0.10	
						X° ±1°			

X-ON Electronics

Largest Supplier of Electrical and Electronic Components

Click to view similar products for [Pluggable Terminal Blocks](#) category:

Click to view products by [Amphenol](#) manufacturer:

Other Similar products are found below :

[57.510.0053](#) [MC 1.5/ 6-ST-3.5 GY AU](#) [734-104](#) [734-302](#) [8-141-P](#) [8426620000](#) [860505](#) [860810](#) [GBPACX-12](#) [93.731.4953.0](#) [PV05-5,08-K](#)
[PVP04-3,50](#) [PVS02-5,00](#) [1-1986160-3](#) [1377680000](#) [1531000000](#) [1546228-5](#) [ELFH16150](#) [ELFP03110](#) [ELFP10210](#) [ELFT06250](#)
[ELVP03100](#) [1700410](#) [1700425](#) [1702246](#) [1717806](#) [1719600](#) [1734692](#) [1734795](#) [1740291](#) [1752441](#) [1752865](#) [1754144](#) [1760051](#) [1760336](#)
[1777701](#) [1783410](#) [1800227](#) [1801080](#) [1836888](#) [1848818](#) [1849079](#) [1860870](#) [1876327](#) [1896417](#) [1903096](#) [19346](#) [1946309](#) [1970579](#) [1973592](#)