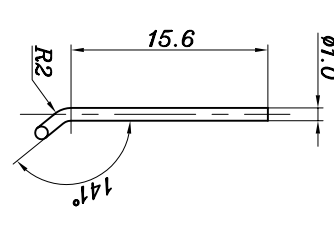
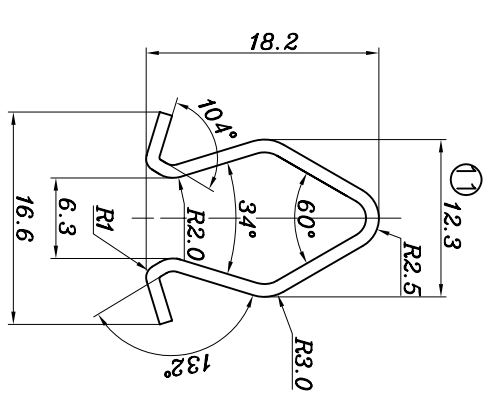
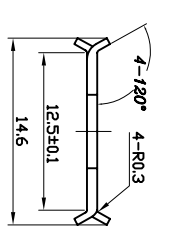
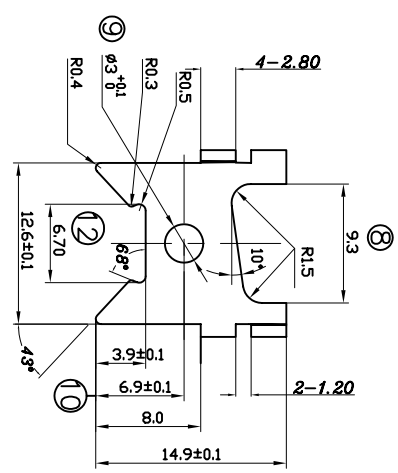
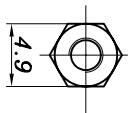
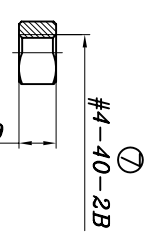
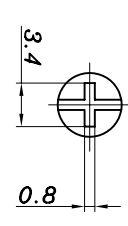
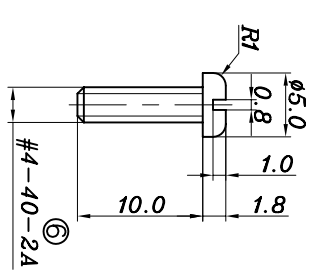
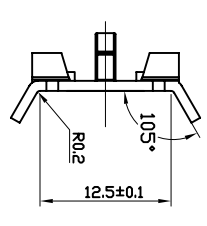
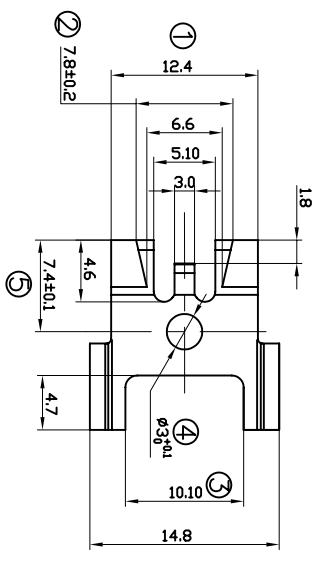


This document is the property of Amphenol Corporation and is delivered on the express condition that it is not to be duplicated, reproduced or used, in whole or in part, for any purpose other than that for which it was originally intended without the prior consent, in writing, of Amphenol Corporation. All rights are reserved. No part of this document is to be disseminated or to be used for any other purpose without the prior written consent of Amphenol Corporation.



4

5



REVISIONS		DATE	APPROVED
S/M	EON	DESCRIPTION	
A	HKxxx	RELEASE update drawing	

notes:
1. Material: part 1, 2, 3, 4, steel
part 5, stainless steel
2. plating: part 1, 2, 3, 4 Nickel plated 2-4 μm ; part 5, oxidation
3. The number dimensions are important dimensions, which are checked while production

sequence	description	quantity	remark
5	Spring	2	
4	fixed board 2	2	
3	Nut	4	
2	Screw	4	
1	fixed board 1	2	

DIN/ANSI OTHER SIZE SPECIFIED		APPROVAL		TITLE Amphenol L17529
TOLERANCES		DRAWN	DATE	
U.S.		10/10/07	10/10/07	
METRIC		CHECKED	10/10/07	
FOR MATERIALS AND FINISHES				
REMOVE SHARP EDGES				
DIMENSIONS				
TOLERANCE				
ANGLE OF PROJECTION				
DRAWING FILE: Opnmgcvsur.W364110				
SIZE: DRAWING NO. W1264110				
SCALE: NONE				
SHEET 1 OF 1				

1 2 3 4

1 2 3 4

X-ON Electronics

Largest Supplier of Electrical and Electronic Components

Click to view similar products for [D-Sub Tools & Hardware](#) category:

Click to view products by [Amphenol](#) manufacturer:

Other Similar products are found below :

[000-01-09-132](#) [000-01-21-132](#) [000-01-31-162](#) [572019-00105-70](#) [000-01-37-162](#) [621-250-113-115](#) [D110550-2](#) [D20418-137](#) [780-518-50SG6-WS](#) [86552009](#) [86553115TLF](#) [86553117TLF](#) [1230032-1](#) [1-5021101-2](#) [1589283-4](#) [160-000-005R031](#) [16-000230](#) [160-025-004R031](#) [160-020-209R000](#) [160X10909X](#) [164C03939A](#) [177-505-A-2-2](#) [1-966830-8](#) [21018-6](#) [21028-2](#) [2-1393560-9](#) [JS-1000](#) [L17D204182M3E](#) [L17D53018](#) [300X10779X](#) [160X10189X](#) [160X10419X](#) [162-000-050R000](#) [21018-5](#) [212561-3](#) [248C21550X](#) [CF15P](#) [D110277](#) [D20418-135](#) [500-008NF1K-01](#) [500-008NF3R3KS-01](#) [500-017M09FN](#) [500-017M15MHN](#) [500-024M1](#) [500-068M3](#) [5-1393561-5](#) [C115373-0001](#) [C115373-0002](#) [3342-4-KIT](#) [K1003](#)