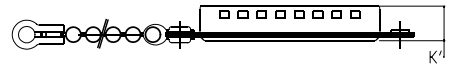


REVISIONS

SYM	ECN	DESCRIPTION	DATE	APPROVED
1			03/27/09	



Flat MALE dust cover with Chain, for use with FEMALE connector

Part number

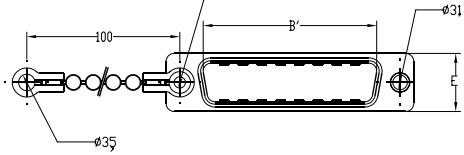
09 contacts or shell size E =L17D4K630 09
15 contacts or shell size A =L17D4K630 15
25 contacts or shell size B =L17D4K630 25
37 contacts or shell size C =L17D4K630 37
50 contacts or shell size D =L17D4K630 50



Flat MALE dust cover without Chain, for use with FEMALE connector

Part number

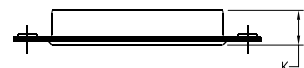
09 contacts or shell size E =L17D4K630 10
15 contacts or shell size A =L17D4K630 16
25 contacts or shell size B =L17D4K630 26
37 contacts or shell size C =L17D4K630 38
50 contacts or shell size D =L17D4K630 51



Flat FEMALE dust cover with Chain, for use with MALE connector

Part number

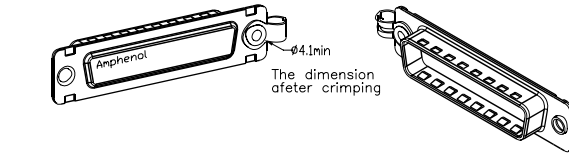
09 contacts or shell size E =L17D4K631 09
15 contacts or shell size A =L17D4K631 15
25 contacts or shell size B =L17D4K631 25
37 contacts or shell size C =L17D4K631 37
50 contacts or shell size D =L17D4K631 50



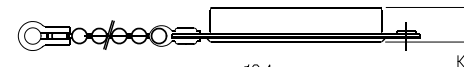
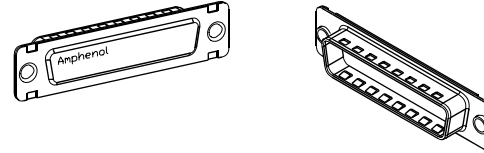
Flat FEMALE dust cover without Chain, for use with MALE connector

Part number

09 contacts or shell size E =L17D4K631 10
15 contacts or shell size A =L17D4K631 16
25 contacts or shell size B =L17D4K631 26
37 contacts or shell size C =L17D4K631 38
50 contacts or shell size D =L17D4K631 51



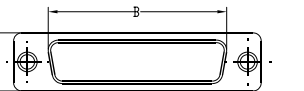
Ø4.1min
The dimension afeter crimping



Flat FEMALE dust cover with Chain, for use with MALE connector

Part number

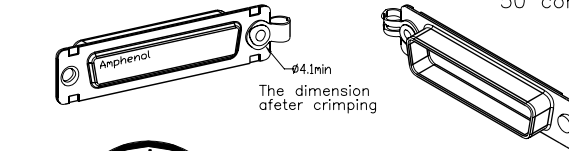
09 contacts or shell size E =L17D4K631 09
15 contacts or shell size A =L17D4K631 15
25 contacts or shell size B =L17D4K631 25
37 contacts or shell size C =L17D4K631 37
50 contacts or shell size D =L17D4K631 50



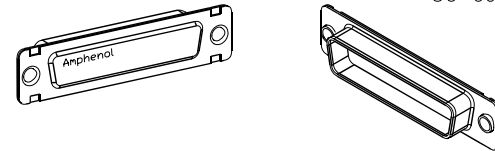
Flat FEMALE dust cover without Chain, for use with MALE connector

Part number

09 contacts or shell size E =L17D4K631 10
15 contacts or shell size A =L17D4K631 16
25 contacts or shell size B =L17D4K631 26
37 contacts or shell size C =L17D4K631 38
50 contacts or shell size D =L17D4K631 51



Ø4.1min
The dimension afeter crimping



Shell = steel with tin plating

Customer drawing

Size	B'	B	K'	K	E
E	16,8	16,4	7,6	7,9	12,4
A	25,1	24,8	7,6	7,9	12,4
B	38,8	38,5	7,6	7,9	12,4
C	55,3	54,9	7,6	7,9	12,4
D	52,7	52,5	7,6	7,9	15,2

UNLESS OTHERWISE SPECIFIED
TOLERANCES

	U.S.	METRIC
.X +/-		0.50
.XX +/-		0.30
.XXX +/-		0.20
FRACTIONS +/-		
ANGLES +/-	5°	

FOR MATERIALS AND FINISHES SEE NOTES

REMOVE SHARP EDGES

DIMENSIONS	U.S.	INCHES	METRIC	MM

APPROVAL		DATE
DRAWN	Lik Wang	02/04/07
CHECKED	Stefan	02/04/07
CHECKED		

DRAWING FILE :

ANGLE OF PROJECTION

Amphenol

TITLE

Accessory, Dust Cover

SIZE	DRAWING NO.	REV.
A4	C L17D4K63XXX	1

SCALE NONE SHEET 1 OF 1

X-ON Electronics

Largest Supplier of Electrical and Electronic Components

Click to view similar products for [D-Sub Tools & Hardware](#) category:

Click to view products by [Amphenol](#) manufacturer:

Other Similar products are found below :

[173112-0667](#) [173112-0759](#) [173112-0967](#) [173112-0291](#) [173112-0456](#) [000-01-09-132](#) [000-01-21-132](#) [000-01-31-162](#) [572019-00105-70](#)
[000-01-37-162](#) [621-250-113-115](#) [D20418-2R](#) [D20418-J3F](#) [70521CLF](#) [70524BLF](#) [70527BLF](#) [70527CLF](#) [F1042-1PLAH](#) [750643-1](#) [780-010-06G4-00C](#) [780-518-50SG6-WS](#) [863004ATLF](#) [86552009](#) [86553115TLF](#) [86553117TLF](#) [86553156LF](#) [FSGK1/5](#) [980-8554-000](#) [980-8555-000](#)
[980-8557-000](#) [980-8558-000](#) [1230032-1](#) [1-5021101-2](#) [15-000050](#) [1589283-4](#) [160-000-005R031](#) [16-000230](#) [160-020-109R000](#) [160-025-004R031](#) [160-015-003R031](#) [160-020-209R000](#) [160X10909X](#) [164C03939A](#) [177-505-A-2-2](#) [177-505-C-4-4](#) [179-013-1H](#) [1-966830-8](#) [21018-6](#)
[21028-3](#) [213622-5](#)