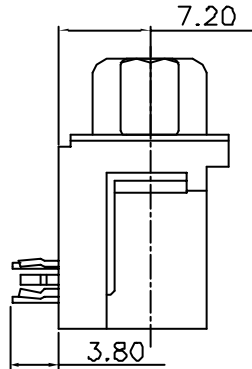
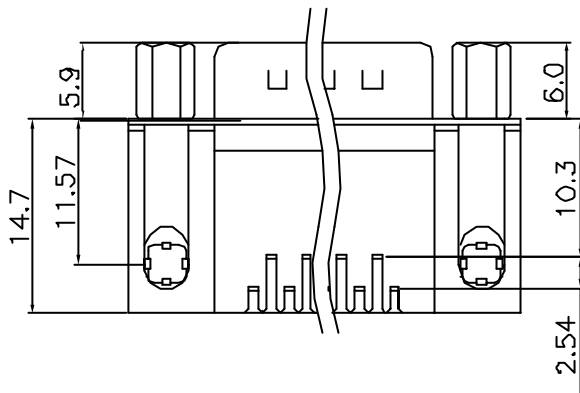
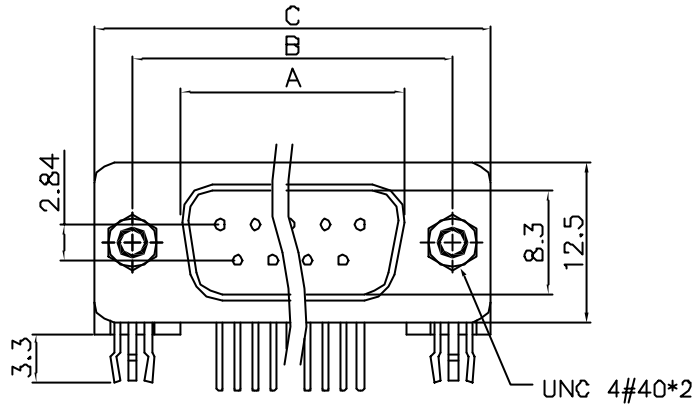
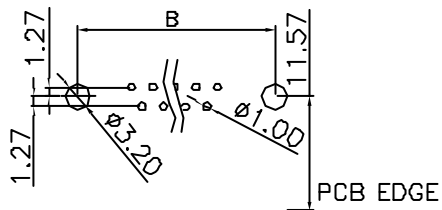


This document is the property of Amphenol Corporation and is delivered on the express condition that it is not to be disclosed, reproduced or used, in whole or in part, for the manufacture or sale by anyone other than Amphenol Corporation without its prior consent, and that no right is granted to disclose or to use any information in this document.



RECOMMENDED PCB LAYOUT



SPECIFICATION

MATERIAL

Insulator: PBT, rated UL94V-0

Contacts: Brass

Shell: Steel

Rivet, Boardlock: Copper alloy

CONTACT PLATING

Underplate: 50µ" Nickel

Contact area: gold flash

Solder tails area: 100µ" Tin

ELECTRICAL

Operation voltage: 250 VAC max.

Current rating: 3 Amps

Contact resistance: 15 mohms

Insulation resistance: 3000 Mohms min @ 500 VDC

Dielectric withstanding voltage: 1000 VAC / minute

Operating temperature: -55°C TO +105°C

ROHS Compliant

MSL : 3

Size	part number	A	B	C
09	L717SDE09P1ACH4F	16.92	25.00	30.8
15	L717SDA15P1ACH4F	25.25	33.30	39.2
25	L717SDB25P1ACH4F	38.96	47.10	53.1
37	L717SDC37P1ACH4F	55.42	63.50	69.4

TOLERANCE (mm)	APPROVALS	DATE	TITLE	AMPHENOL	
X. ±0.3	GDU	10/11/05	17SD SERIES D-SUB CONNECTORS PCB RIGHT ANGLE EUROPEAN FOOTPRINT PLUG	AMPHENOL SOCAPEX	
X.X ±0.1	JF.L	10/11/05		Dole Plant	
X.XX ±0.05	JF.L	10/11/05		Scale N.A.	Sheet 1 of 1
			UNIT: MM	SIZE: A4	DRAWING N° L717SD---P1ACH4F
					REV. A

## X-ON Electronics

Largest Supplier of Electrical and Electronic Components

*Click to view similar products for [D-Sub Standard Connectors](#) category:*

*Click to view products by [Amphenol](#) manufacturer:*

Other Similar products are found below :

[56F706-005-LI](#) [56F711-015](#) [012-9507-004](#) [LV242999-142T12](#) [015-0341-000](#) [015-0372-005](#) [015-0372-008](#) [015-8755-001](#) [020419-0104](#)  
[012-0467-000](#) [012-9507-034](#) [012-9507-114](#) [020745-0008](#) [609-25P](#) [CT2-14S-2PCA34](#) [CT2-18-11PCAU](#) [CT6-10SL-3SC](#) [CT6-10SL-4SC](#)  
[CT6-14S-2SC](#) [CT6E14SA7SC](#) [CT6N10SL-4SSA34](#) [M83513/01-FC](#) [M83723/76W24619 L/C](#) [M85049/48-3-2F](#) [6STD09PCM99B70X](#)  
[6STD09SCM99B30X](#) [6STD09SCT99S40X](#) [6STD15PCT99S40X](#) [6STD15SCT99S40X](#) [6STF09PCM05B70X](#) [7-135760-9](#) [MC11E-10-6SN](#)  
[747552-3](#) [MD1-21PS](#) [MDM-15SCBRM7-F222](#) [MDM96517-699](#) [MDM96521-744](#) [MDVB1-21SL1](#) [MIK0-1-7SH003](#) [MIKQ6-7SH076](#)  
[MIKQ7-7PH077](#) [MIKQ7-7PH11](#) [MIKQ7-7PH32](#) [MJSV-28SL61](#) [MKJ4A1F14-55S](#) [8-135760-3](#) [8STD09PCM99B30X](#) [PG-KV/PV-16-](#)  
[GROM-SEALING](#) [GDA15P](#) [GDAY15PB](#)